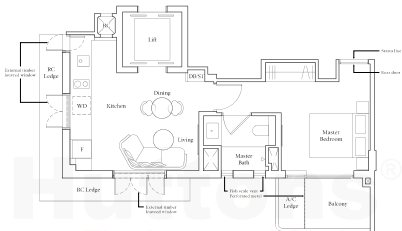


I-BEDROOM CLASSIC

● Type AC1 | 44 sqm | 474 sqft

*Mirror
#02-02 to #04-02 #02-06 to #04-06
#02-08 to #04-08 #02-12 to #04-12
#02-14 to #04-14 #02-18 to #04-18



HUTTONS ASIA PTE LTD

ESTATE AGENT LICENCE NO. : L3008899K

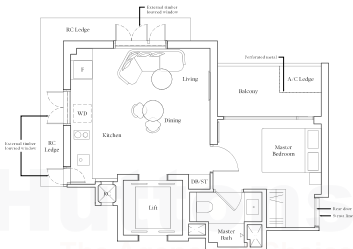


*Note: Area includes A.C. ledge balcony, glass, printer and service and utility of low application. BC ledge is not part of estate area. The above plans and illustrations are subject to changes as notified separately by the relevant authorities. Space and dimensions only and are subject to final survey. The fixtures, pan and fittings and services shall not be included unless with the approved plans. For an illustration of the approach/looking views, please refer to the digital presentation or 'panorama'.

I-BEDROOM CLASSIC

● Type AG2 | 46 sqm | 495 sqft

*Mirror
 #02-01 to #04-03 #02-05 to #04-05
 #02-07 to #04-07 #02-09 to #04-11
 #02-13 to #04-13 #02-17 to #04-17



HUTTONS ASIA PTE LTD

ESTATE AGENT LICENCE NO. L3008899K



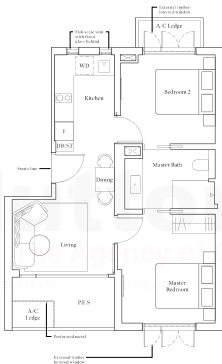
Note: Area includes A.C. ledge balcony, glass partition and terrace and unit of base apartment. BC ledge is not part of estate area. The above plans and illustrations are subject to changes as notified separately by the relevant authorities. Sizes are indicated only and are subject to final survey. The balcony, pool and garden and terrace shall not be included unless with the approved plans for an illustration of the approach/looking views please refer to the digital presentation or 'panorama'.

2-BEDROOM CLASSIC

● Type BCI-G | 61 sqm | 657 sqft

#01-20
#01-24

*Mirror
#05-21
#08-25

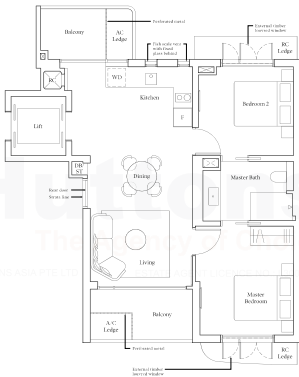


Note: Area includes A/C ledge, balcony, glass, mirror and screen and wall if any applicable. B/C ledge is not part of area area. The above plans and illustrations are subject to changes in order to comply with the relevant authorities. Some are reference only and are subject to final survey. The balcony, pool and private and common shall not be included unless with the appropriate consent for an illustration of the appropriate drawings please refer to the digital documents on 'documents'.

2-BEDROOM CLASSIC

● Type BCl | 75 sqm | 807 sqft

*Mirror
 #02-20 to #04-20 #02-21 to #04-21
 #02-24 to #04-24 #02-25 to #04-25



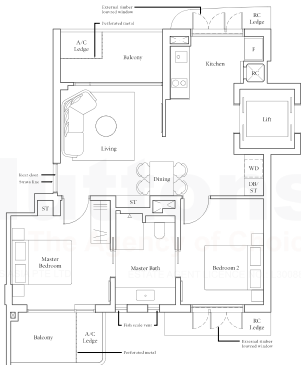
*Note: Area includes A/C ledge balcony glass, private road surface and utility of law applicable. B/C ledge is not part of area size. The above plans and illustrations are subject to change or modification by the relevant authorities. Sizes are indicated only and are subject to final survey. The balcony, pool and garden and terrace shall not be included along with the approved floor plan for the illustration of the approach/development plans before the development authority or 'Authority'.

2-BEDROOM CLASSIC PREMIUM

● Type BC2 | 75 sqm | 807 sqft

*Mirror
 #02-07 to #04-03 #02-08 to #04-04
 #02-09 to #04-09 #02-10 to #04-10
 #02-15 to #04-15 #02-16 to #04-16

TYPICAL PLAN

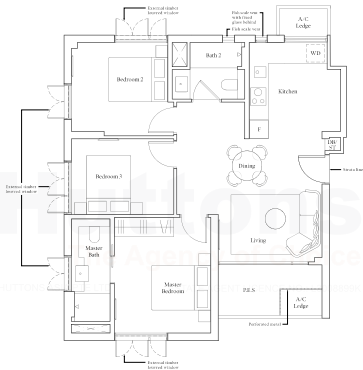


Note: Area includes A/C ledge, balcony, gym, private road service and utility where applicable. BC ledge is not part of area size. The above plans and illustrations are subject to change as further approvals for the relevant authorities. Some area reduction may not be subject to final survey. The balcony, pool and private road service shall not be included unless with the approved plans for an illustration of the approach/bridge works please refer to the digital presentation or 'Siteplan 1'.

3-BEDROOM CLASSIC

● Type CCL-G | 88 sqm | 947 sqft

#01-19	*Mirror
#01-23	#05-22
	#08-26



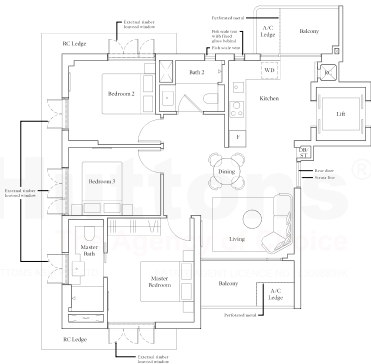
Note: Area includes A/C ledge balcony glass, perimeter wall and window sill or floor as applicable. B/C ledge is not part of area size. The above plans and illustrations are subject to changes as needed, especially for the relevant authorities. Some are released only and are subject to final survey. The balcony, pool and garden and terrace shall not be included unless with the approved plans for an illustration of the approved design works please refer to the digital presentation or 'imaginary 1'.

3-BEDROOM PREMIUM CLASSIC

Type CC1 | 93 sqm | 1001 sqft

*Mirror
 #02-19 to #04-19 #02-22 to #04-22
 #02-23 to #04-23 #02-26 to #04-26

TYPICAL PLAN

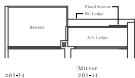
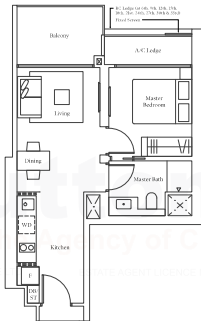


Note: Area includes A/C ledge balcony glass partition and window and wall if any applicable. BC Ledge is not part of area size. The above plans and illustrations are subject to change as further approved by the relevant authorities. Sizes are indicated only and are subject to final survey. The balcony, pool and garden and terrace shall not be included unless with the approved plans for an illustration of the approach/balcony terrace please refer to the digital presentation or 'Impressus 1'.

I-BEDROOM

● Type A1 | 49 sqm | 527 sqft

*Mirror
 #01-14 to #10-14 #04-14 to #10-14
 #20-14 to #35-14 #20-14 to #35-14

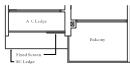
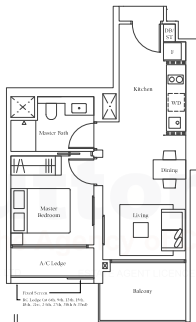


Note: Area includes A/C lodge, balcony, glass, printer and service and utility where applicable. BC Lodge is not part of area size. The above plans and illustrations are subject to change as needed upon approval by the relevant authorities. Areas are indicated only and are subject to final survey. The balcony, glass and printer and service shall not be included unless with the approval/consent for an illustration of the approach/structure works, please refer to the digital construction or 'temporary' I.

I-BEDROOM

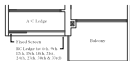
Type A2 | 49 sqm | 527 sqft

#04+29 to #05+29	#04+39 to #05+39
#09+29 to #11+29	#09+39 to #11+39
#15+29 to #17+29	#15+39 to #17+39
#21+29 to #23+29	#21+39 to #23+39
#27+29 to #29+29	#27+39 to #29+39
#33+29 to #35+29	#33+39 to #35+39



#03+29

*Mirror
#03+39



#04+29 to #06+29
#12+29 to #14+29
#18+29
#20+29
#24+29 to #26+29
#30+29 to #32+29

*Mirror
#06+39 to #08+39
#12+39 to #14+39
#18+39
#20+39
#24+39 to #26+39
#30+39 to #32+39

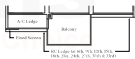
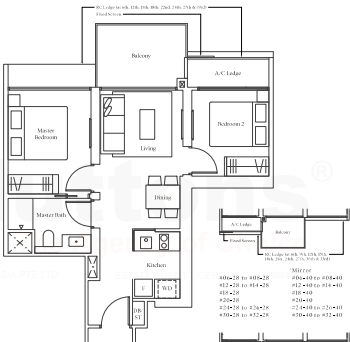


Note: Area includes A/C ledge balcony, gas, printer and screen and wall-to-wall as applicable. BC Ledge is not part of area size. The above plans and illustrations are subject to changes as notified separately by the relevant authorities. Sizes are estimates only and are subject to final survey. The balcony, gas and printer and screen shall not be included along with the approved plans for an illustration of the approved layout except when referred to the digital construction or 'blueprint'.

2-BEDROOM

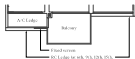
● Type B1 | 61 sqm | 657 sqft

*Mirror	
#04-27 to #05-23	#04-45 to #05-45
#09-23 to #11-23	#09-45 to #11-45
#15-23 to #17-23	#15-45 to #17-45
#21-23 to #23-23	#21-45 to #23-45
#27-23 to #29-23	#27-45 to #29-45
#33-23 to #35-23	#33-45 to #35-45



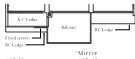
BC Ledge to wk. DB, DB, BB, 2nd, 2nd, 2nd, 2nd & 2nd

*Mirror	
#04-28 to #05-28	#04-40 to #05-40
#12-28 to #14-28	#12-40 to #14-40
#18-28	#18-40
#20-28	#20-40
#24-28 to #26-28	#24-40 to #26-40
#30-28 to #32-28	#30-40 to #32-40



BC Ledge to wk. DB, DB, BB, 2nd, 2nd, 2nd, 2nd & 2nd

*Mirror	
#04-40 to #05-40	#04-10 to #05-10
#08-40 to #11-40	#09-10 to #11-10
#15-40 to #17-40	#15-10 to #17-10
#21-40 to #23-40	#21-10 to #23-10
#27-40 to #29-40	#27-10 to #29-10
#33-40 to #35-40	#33-10 to #35-10



*Mirror

#03-28	#03-10
--------	--------

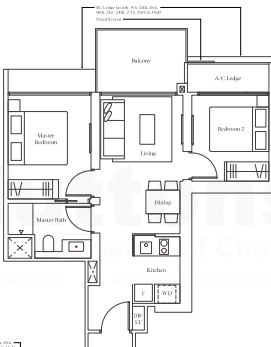


Note: Area includes A/C ledge, balcony, gym, printer and screen and valid if low applicable. BC Ledge is not part of area size. The above plans and illustrations are subject to changes as made applicable by the relevant authorities. Areas are indicated only and are subject to final survey. The balcony, pool and private and service shall not be included unless with the approval of the relevant authorities for an illustration of the approved design. Please refer to the digital measurement on 'HomePro 1'.

2-BEDROOM

● Type B1 | 61 sqm | 657 sqft

*Mirror	
#04-33 to #05-33	#04-45 to #05-45
#09-33 to #11-33	#09-45 to #11-45
#15-33 to #17-33	#15-45 to #17-45
#21-33 to #23-33	#21-45 to #23-45
#27-33 to #29-33	#27-45 to #29-45
#33-33 to #35-33	#33-45 to #35-45



*Mirror	
#04-33 to #08-33	#06-45 to #08-45
#12-33 to #14-33	#12-45 to #14-45
#18-33	#18-45
#20-33	#20-45
#24-33 to #26-33	#24-45 to #26-45
#30-33 to #32-33	#30-45 to #32-45



*Mirror	
#03-33	#03-45

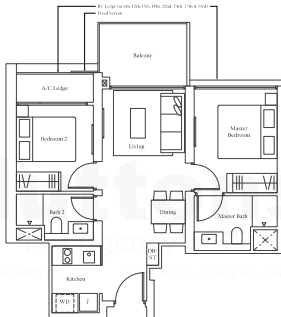


Note: Area includes A/C ledge balcony, gas, power and water and valid if base applicable. B.C. ledge is not part of area size. The above plans and illustrations are subject to changes as matter progresses. For the relevant authorities. Areas are indicated only and are subject to final survey. The balcony, gas and water and service shall not be included along with the approved plans for an illustration of the approved/typical units, please refer to the digital presentation or 'layouts' T.

2-BEDROOM PREMIUM

Type BP1 | 64 sqm | 689 sqft

*Mirror	
#04-35 to #05-35	#04-43 to #05-43
#15-35 to #17-35	#15-43 to #17-43
#22-35 to #23-35	#22-43 to #23-43
#27-35 to #29-35	#27-43 to #29-43
#33-35 to #35-35	#33-43 to #35-43



#05-35



*Mirror	
#04-35 to #08-35	#06-43 to #08-43
#12-35 to #14-35	#12-43 to #14-43
#18-35	#18-43
#24-35 to #26-35	#24-43 to #26-43

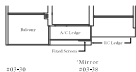
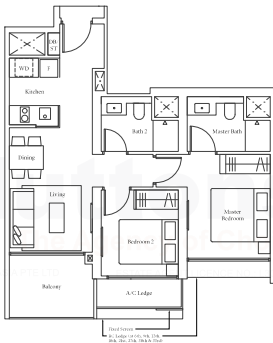


Note: Area includes A/C Ledge balcony, gas, power and water and valid if how applicable. BC Ledge is not part of area size. The above plans and illustrations are subject to change in order to comply with the relevant authorities. Areas are indicated only and are subject to final survey. The balcony, gas and water and services shall not be included along with the approved plans for an illustration of the approved drawings which please refer to the digital construction or 'Issuance T'.

2-BEDROOM PREMIUM

Type BP2 | 67 sqm | 721 sqft

*04-70 to *17-70	*04-38 to *11-38
*17-70 to *18-70	*17-38 to *18-38
*20-70 to *23-70	*20-38 to *21-38
*27-70 to *35-70	*27-38 to *35-38

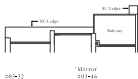
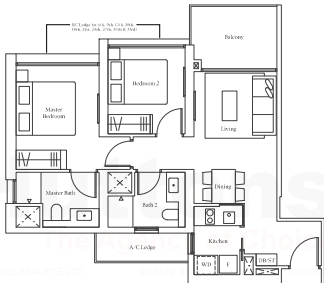


*Note: Area includes A/C Lodge, balcony, pool, private road, service and utility (where applicable). B/C Lodge is not part of estate area. The above plans and illustrations are subject to changes as may be required by the relevant authorities. Areas are indicated only and are subject to final survey. The balcony, pool and private road services shall not be included unless with the approved drawings for an illustration of the approach/drawings screen, please refer to the digital presentation or 'brochure'.

2-BEDROOM PREMIUM

Type BP3 | 68 sqm | 732 sqft

*Mirror
 #04-32 to #10-32 #04-46 to #10-46
 #20-32 to #35-32 #20-46 to #35-46



#03-32

*Mirror
 #10-46

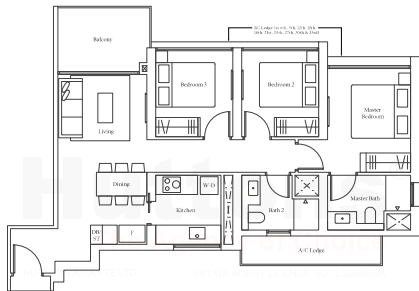


Note: Area includes A/C lodge balcony, glass partition and screen and ceiling if any applicable. A/C lodge is not part of main area. The above plans and illustrations are subject to change in order to comply with the relevant authorities. Areas are indicated only and are subject to final survey. The balcony, pool and garden and terrace shall not be included unless with the approved plans for an illustration of the approach/drop down ramps please refer the digital presentation or 'Siteplan 1'.

3-BEDROOM

Type C1 | 88 sqm | 947 sqft

*Mirror
#01+76 to #08+76 #04+42 to #08+42
#20+76 to #35+76 #20+42 to #35+42



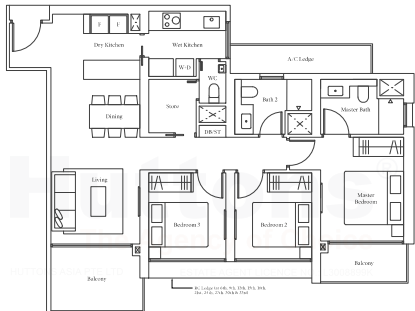
202-36

Note: Area includes A/C ledge balcony glass partition and screen and valid if law applicable. A/C ledge is not part of main area. The above plans and illustrations are subject to change as further enquiries for the relevant authorities. Same are reference only and are subject to final survey. The balcony, pool and screen and screen shall not be included unless with the approval of the local authority for an illustration of the approach/bridge screen please refer to the digital presentation or 'panorama'.

3-BEDROOM PREMIUM

● Type CP1 | 103 sqm | 1109 sqft

*Mirror
 #04-27 to #18-27 #04-41 to #18-41
 #20-27 to #35-27 #20-41 to #35-41



#03-17

*Mirror
 #03-41

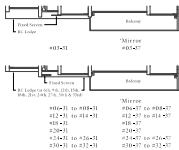
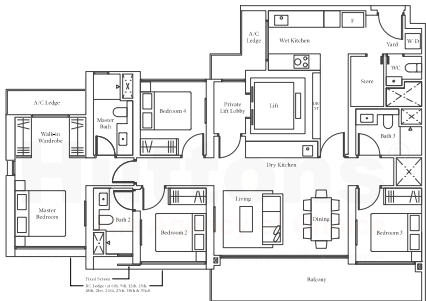


Note: Area includes A/C lodge balcony, gym, private road network and utility where applicable. A/C lodge is not part of estate area. The above plans and illustrations are subject to changes as notified separately by the relevant authorities. Areas are indicated only and are subject to final survey. The balcony, pool and private road network shall not be included unless with the approved plans for an illustration of the approach/drop-off points before the digital construction or 'topworks'.

4-BEDROOM PREMIUM

Type DP1 | 139 sqm | 1496 sqft

*Mirror	*Mirror
#04-31 to #05-31	#04-37 to #05-37
#09-31 to #11-31	#09-37 to #11-37
#15-31 to #17-31	#15-37 to #17-37
#21-31 to #23-31	#21-37 to #23-37
#27-31 to #29-31	#27-37 to #29-37
#33-31 to #35-31	#33-37 to #35-37



Note: Area includes A/C Ledge, balcony, gym, private pool and storage and valid if base applicable. B/C Ledge is not part of estate area. The above plans and illustrations are subject to changes in order to comply with the relevant authorities. Areas are indicated only and are subject to final survey. The balcony, pool and private pool entrance shall not be included unless with the approval from the relevant authority for the illustration of the approach/entrance ways, please refer to the digital presentation or 'brochure'.

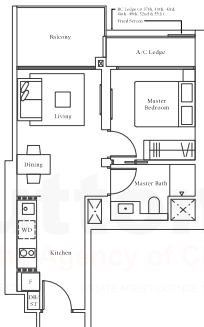
I-BEDROOM

Type A1 | 49 sqm | 527 sqft

#37-64 to #50-34

Mirror

#37-44 to #50-44

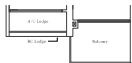
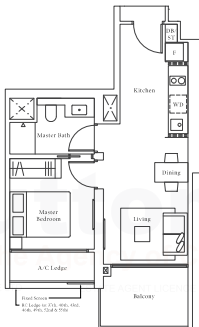


Note: Area includes A/C Ledge, balcony, oven, private roof terrace and void where applicable. B/L ledge is not part of sales area. The above plans and illustrations are subject to change as may be required by the relevant authorities. Areas are not to scale and are subject to final survey. The balcony, oven and private roof terrace shall not be enclosed unless with the approved consent. For an illustration of the approved balcony screen, please refer to the Diagram omitted herein as "Screening".

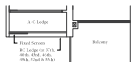
I-BEDROOM

● Type A2 | 49 sqm | 527 sqft

#10-29 to #15-29	*Mirror
#16-29 to #18-29	#10-29 to #15-29
#19-29 to #24-29	#16-29 to #18-29
#25-29 to #54-29	#21-29 to #54-29



#55-29 *Mirror #55-29



#17-29 to #70-29 *Mirror #37-29 to #70-29
 #15-29 to #18-29 #45-29 to #48-29
 #19-29 to #51-29 #49-29 to #51-29

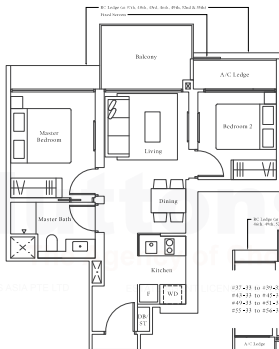


*Note: Area includes A/C Ledge, balcony, glass privacy roof terrace and wall-to-been applicable. B/C ledge is not part of area area. The above plans and illustrations are subject to change as may be required by the relevant authorities. Areas are not necessarily and an subject to final survey. The balcony, glass and privacy roof terrace shall not be enclosed unless with the approval of the relevant authorities. For an illustration of the approved balcony screen, please refer to the Diagram attached hereto as "Annexure C".

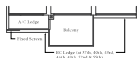
2-BEDROOM

● Type B1 | 61 sqm | 657 sqft

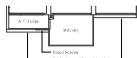
Mirror	
#40-33 to #42-33	#40-45 to #42-45
#40-33 to #40-45	#44-45 to #46-45
#52-33 to #54-33	#52-45 to #54-45



Mirror	
#37-33 to #39-33	#37-45 to #39-45
#43-33 to #45-33	#43-45 to #45-45
#49-33 to #51-33	#49-45 to #51-45
#55-33 to #56-33	#55-45 to #56-45



Mirror	
#37-28 to #39-28	#37-40 to #39-40
#43-28 to #45-28	#43-40 to #45-40
#49-28 to #51-28	#49-40 to #51-40
#55-28 to #56-28	#55-40 to #56-40



Mirror	
#40-28 to #42-28	#40-40 to #42-40
#46-28 to #48-28	#46-40 to #48-40
#52-28 to #54-28	#52-40 to #54-40

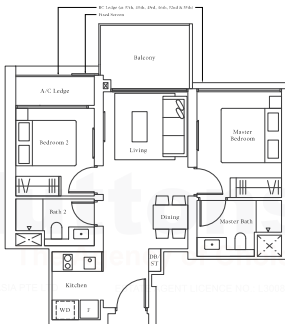


Note: Area includes A/C Ledge, Balcony, gas pipeline and terrace and void where applicable. B/C Ledge is not part of sales area. The dimensions and illustrations are subject to change as may be required by the relevant authorities. Areas are not intended to be an indicator of final survey. The balcony, gas and gas line terrace shall not be enclosed unless with the approval of the relevant authorities. For an illustration of the approved balcony screen, please refer to the Diagram omitted herein as "Screening".

2-BEDROOM PREMIUM

● Type BPI I 64 sqm I 689 sqft

#40-35 to #42-35	*Mirror	#40-43 to #42-43
#46-35 to #48-35		#46-43 to #48-43
#52-35 to #54-35		#52-43 to #54-43



#37-35 to #39-35	*Mirror	#37-43 to #39-43
#43-35 to #45-35		#43-43 to #45-43
#55-35 to #56-35		#55-43 to #56-43



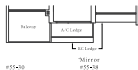
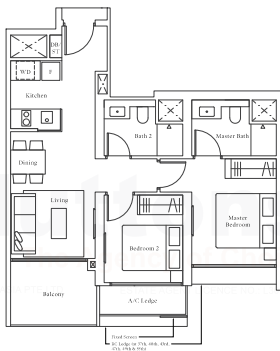
Note: Area includes A/C Ledge, balcony, glass privacy net screen and wall-to-been applicable. BC Ledge is not part of sales area. The above plans and illustrations are subject to changes as may be required by the relevant authorities. Areas are not necessarily and are subject to final survey. The balcony, glass and privacy net screen shall not be enclosed unless with the approval of the relevant authorities. For an illustration of the approved balcony screen, please refer to the Diagram attached hereto as "Attachment 1".

2-BEDROOM PREMIUM

● Type BP2 | 67 sqm | 721 sqft

#37-30 to #43-30
#47-30 to #51-30

Mirror
#37-38 to #43-38
#47-38 to #51-38



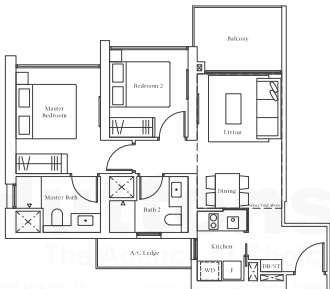
Note: Area includes A/C Ledge, Balcony, glass, privacy net screen and wall-to-bean application. BC Ledge is not part of area area. The above plans and illustrations are subject to changes as may be required by the relevant authorities. Areas are not to-scale and are subject to final survey. The balcony, glass and privacy net screen shall not be enclosed unless with the approval of the relevant authority. For an illustration of the approved balcony screen, please refer to the Diagram omitted herein as "Attachment 1".

2-BEDROOM PREMIUM

Type BP3-PH I 82 sqm I 883 sqft

#51-32

Mirror
#51-46



Note: Area includes A/C ledge, balcony, gas, private roof terrace and void to be used as applicable. BC ledge is not part of sales area. The above plans and illustrations are subject to change as may be required by the relevant authorities. Areas are not necessarily and are subject to final survey. The balcony, gas, and private roof terrace shall not be enclosed unless with the approval of the relevant authorities. For an illustration of the approved balcony screen, please refer to the Diagram omitted herein as "Screening".

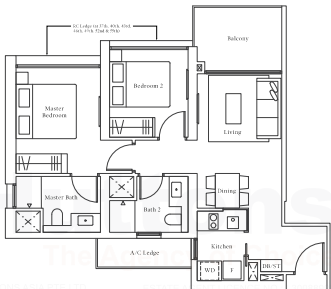
2-BEDROOM PREMIUM

Type BP3 | 68 sqm | 732 sqft

#37-62 to #35-32

Mirror

#37-46 to #35-46



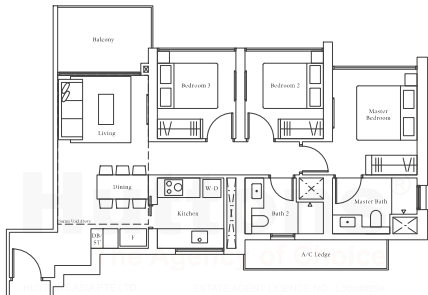
Note: Area includes A/C Leagues, balconies, private roof terrace and voids to be implemented. A/C Leagues are part of common area. The above plans and illustrations are subject to change as may be required by the relevant authorities. Areas are not to scale and are subject to final survey. The balconies, pool and private roof terrace shall not be enclosed walls until the approved scheme. For an illustration of the approved balcony screen, please refer to the Diagram omitted herein as "Screening".

3-BEDROOM

● Type CI-PH I 104 sqm I 1120 sqft

#51-36

Mirror
#51-32



Note: Area includes A/C Ledge, balcony, gas, private roof terrace and void where applicable. W.C. ledge is not part of sales area. The above plans and illustrations are subject to change as may be required by the relevant authorities. Areas are not to scale only and are subject to final survey. The balcony, gas and private roof terrace shall not be enclosed unless with the approval of the relevant authorities. For an illustration of the approved balcony screen, please refer to the Diagram omitted herein as "Screening".

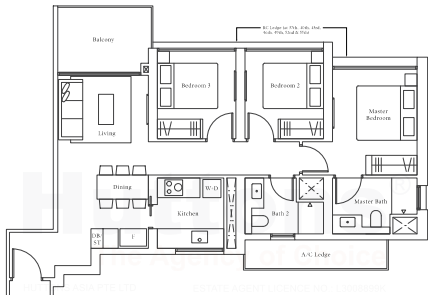
3-BEDROOM

● Type C1 | 88 sqm | 947 sqft

#37-46 to #55-46

*Mirror

#37-42 to #55-42



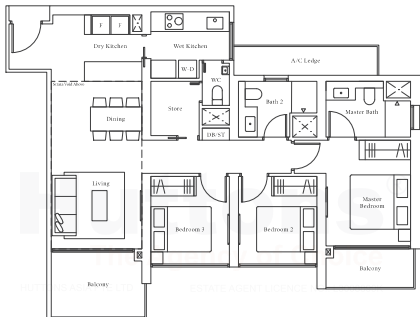
Note: Area includes A/C Ledge, balcony, oven, private roof terrace and void to be used as common area. The above plans and illustrations are subject to change as may be required by the relevant authorities. Areas are not to scale and are subject to final survey. The balcony, oven and private roof terrace shall not be enclosed unless with the approval of the relevant authorities. For an illustration of the approved balcony screen, please refer to the Diagram omitted herein as "Screening".

3-BEDROOM PREMIUM

● Type GP1-PH | 121 sqm | 1302 sqft

#51-27

*Mirror
#51-01



Note: Area includes A/C ledge, balcony, gym, private roof terrace and void to be used as applicable. A/C ledge is not part of sales area. The above plans and illustrations are subject to changes as may be required by the relevant authorities. Areas are not necessarily and are subject to final survey. The balcony, gym and private roof terrace shall not be enclosed unless with the approval of the relevant authorities. For an illustration of the approved balcony screen, please refer to the Diagram attached hereto as "Attachment 1".

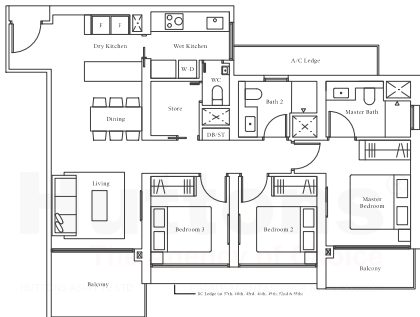
3-BEDROOM PREMIUM

● Type CPI | 103 sqm | 1109 sqft

#37-27 to #35-27

*Mirror

#37-II to #35-II



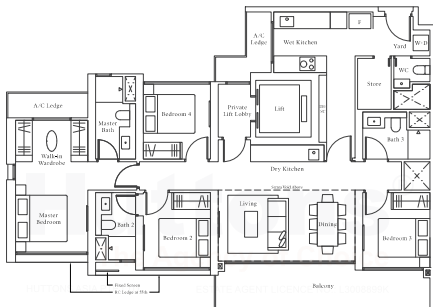
Note: Area includes A/C Ledge, balcony, gas, private roof terrace and void to be used as per applicable A/C Ledge in rest part of same area. The above plans and illustrations are subject to changes as may be required by the relevant authorities. Areas are not necessarily and are subject to final survey. The balcony, gas and private roof terrace shall not be enclosed unless with the approval of the relevant authorities. For an illustration of the approved balcony screen, please refer to the Diagram attached herewith as 'Balcony S'.

4-BEDROOM PREMIUM

● Type DP1-PH | 155 sqm | 1668 sqft

#51-32

*Mirror
#52-37



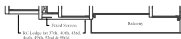
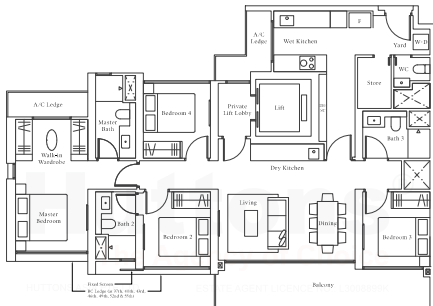
Note: Area includes A/C Ledge, balcony, gym, private road corridor and walk-in-bike appliances. WC Ledge is not part of area area. The drawings and illustrations are subject to change as may be required by the relevant authorities. Areas are not to scale only and are subject to final survey. The balcony, gym and private road corridor shall not be enclosed unless with the approval of the relevant authorities. For an illustration of the approved balcony, screen, glass refer to the Diagram attached below as "Balcony".

4-BEDROOM PREMIUM

● Type DP1 | 139 sqm | 1496 sqft

#40-31 to #42-31
#46-31 to #48-31
#52-31 to #54-31

*Mirror
#46-37 to #42-37
#48-37 to #44-37
#52-37 to #54-37



#27-31 to #29-31
#41-31 to #45-31
#49-31 to #51-31
#55-31

*Mirror
#37-37 to #39-37
#43-37 to #45-37
#49-37 to #51-37
#55-37

Note: Area includes A/C Ledge, balcony, gym, private roof terrace and voids where applicable. WC Ledge is not part of area area. The dimensions and illustrations are subject to change as may be required by the relevant authorities. Areas are not to scale only and are subject to final survey. The balcony, gym and private roof terrace shall not be enclosed unless with the approval of the relevant authorities. For an illustration of the approved balcony, screen, glass rail to the Diagram attached herein as "Section 1".