

MOOI

R E S I D E N C E S



“

One Touch Of Nature
Makes The Whole World Kin.

- WILLIAM SHAKESPEARE -



FREEHOLD LUXURY RESIDENCES AT UPSCALE
HOLLAND ROAD, DISTRICT 10





- MACRITCHIE RESERVOIR PARK
- HEALTH CITY NOVENA
- NANYANG PRIMARY SCHOOL
- FARRER ROAD MRT

- HOLLAND VILLAGE
- ONE-NORTH
- NATIONAL UNIVERSITY OF SINGAPORE



- SINGAPORE BOTANIC GARDENS
- DEMPSEY HILL
- ORCHARD SHOPPING BELT

- HOLLAND VILLAGE MRT
- HENDERSON WAVES (SOUTHERN RIDGES)
- THE STAR VISTA



NATURE

- 5 Mins Walk: Holland Village Park
- 1 MRT Stop: One North Park
- 2 MRT Stops: Singapore Botanic Gardens
- 12 Mins Drive: MacRitchie Reservoir Park
- 13 Mins Drive: Henderson Waves



RETAIL / FOOD & BEVERAGE

- 7 Mins Walk: Holland Village, Holland Road Shopping Centre
- 8 Mins Walk: Holland Village Market & Food Centre
- 1 MRT Stop: The Star Vista, The Rochester
- 4 MRT Stops: Newton Food Centre
- 5 MRT Stops: Velocity @ Novena Square
- 6 Mins Drive: Sixth Avenue
- 8 Mins Drive: Adam Food Centre, Dempsey Hill
- 10 Mins Drive: Orchard Shopping Belt



CONNECTIVITY

- 4 Mins Walk: Holland Village MRT Station
- 1 MRT Stop: Buona Vista MRT Station
- 5 Mins Drive: Ayer Rajah Expressway (AYE)
- 8 Mins Drive: Pan Island Expressway (PIE)
- 13 Mins Drive: Central Expressway (CTE)



EDUCATION

- WITHIN 2KM**
- 9 Mins Walk: Anglo-Chinese School (International)
- 4 Mins Drive: Henry Park Primary School, Fairfield Methodist School (Primary)
- 5 Mins Drive: St Margaret's Secondary School, Anglo-Chinese Junior College, Fairfield Methodist School (Secondary)
- 8 Mins Drive: Nanyang Primary School, Hwa Chong Institution
- WITHIN 4.5KM**
- 7 Mins Drive: Anglo-Chinese School (Independent)
- 8 Mins Drive: Nanyang Girls' High School
- 9 Mins Drive: Raffles Girls' Primary School
- 10 Mins Drive: Singapore Chinese Girls' School, St Joseph's Institution, National Junior College
- 11 Mins Drive: National University of Singapore
- 12 Mins Drive: Anglo-Chinese School (Barker Road)



BUSINESS HUB

- 2 MRT Stops: One-North
- 8 MRT Stops / 16 Mins Drive: Central Business District

Source: www.onemap.sg. All travel times are estimates and subject to actual traffic conditions.

“

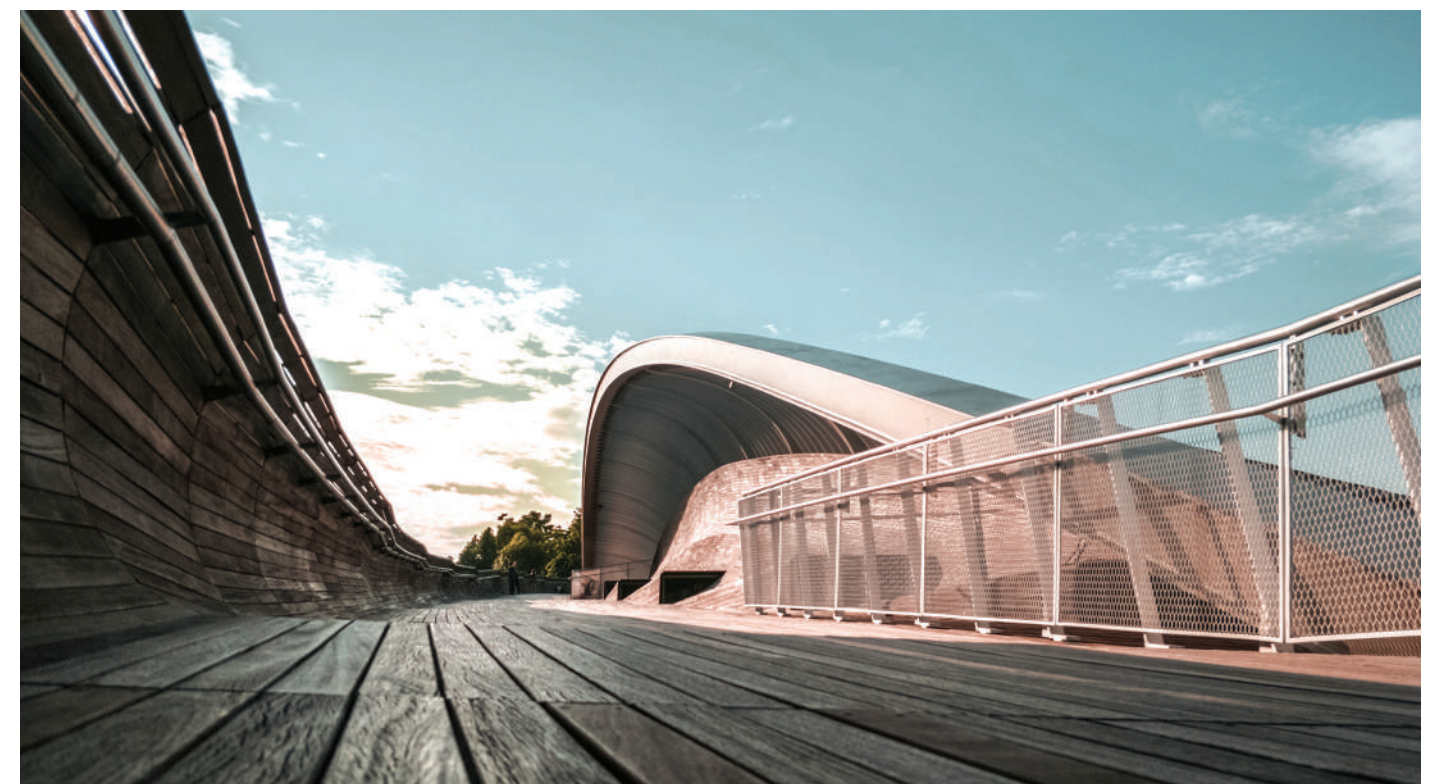
Live Life To The Fullest
Because It Only Happens Once.

- MADDI JENKINS -



Step Into A World Of Nature Within Minutes

Adventures await as nature beckons you to its glory.
From the glistening waters to the gleaming sun, have them all right at your feet.



2 MRT STOPS
SINGAPORE BOTANIC GARDENS

12 MINS DRIVE
MACRITCHIE RESERVOIR PARK

13 MINS DRIVE
HENDERSON WAVES



Rejuvenate At The Renowned Holland Village

Where rest and relaxation becomes a given, Holland Village embodies a melting pot of cafes, wellness areas and retail shops. Perfect for when you just need to recharge for the week ahead.



7 MINS WALK
HOLLAND VILLAGE

Chill-Out At Eclectic Dempsey All Day Long

Having had a big part to play in Singapore's rich colonial past, the Dempsey Hill we know today is not quite what it used to be. Well-loved by many, Dempsey boasts a whole range of highly acclaimed restaurants and antique shops. Imagine all these; a stone's throw away from your abode.





Indulge In City Luxury Whole Year Round

Get to be the subject of envy by having this world-class destination as your neighbourhood.
Now, you can be equally close to the city as you are to nature.



5 MRT STOPS / 8 MINS DRIVE
ORCHARD SHOPPING BELT

“

A Man Cannot Leave A Better
Legacy To The World Than A
Well-Educated Family.

- THOMAS SCOTT -





The Invaluable Gift For Generations

Now, you get to spend more time with your little ones because of how close to home these renowned schools are. Convenience for the whole family.



WITHIN 2KM

- NANYANG PRIMARY SCHOOL
- HENRY PARK PRIMARY SCHOOL
- HWA CHONG INSTITUTION
- ANGLO-CHINESE SCHOOL (INTERNATIONAL)
- ST MARGARET'S SECONDARY SCHOOL
- ANGLO-CHINESE JUNIOR COLLEGE
- FAIRFIELD METHODIST SCHOOL (PRIMARY)
- FAIRFIELD METHODIST SCHOOL (SECONDARY)

“

The Greatest Use Of Life Is
To Spend It On Something That
Will Outlast It.

- WILLIAM JAMES -



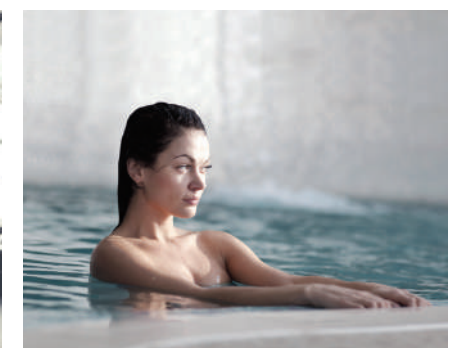
MOOI RESIDENCES, FREEHOLD LUXURY RESIDENCES
AT UPSCALE HOLLAND ROAD, DISTRICT 10



Catch Brilliant Hues Of
Orange And Pink As The Sunset Melts Into
The Holland Village Landscape.



At Mooi Residences, you're covered by more than you ever thought you needed from the roof to the basement.
A fully equipped gym means it's easier to keep in shape. Savour the calming pool view as you sweat it out after a long day. Above you sits a deck where you can delight yourself in gourmet excellence.



“

Coming Home Is One Of
The Most Beautiful Things.

- ANDRE RIEU -





Private Lifts Leading To Every Unit For Your Exclusivity



Every unit is thoughtfully designed to match your unparalleled lifestyle. A private lift will serve to your doorstep to complement the ultimate luxury living. Choose from a wide selection of 2-bedroom, 3-bedroom, 3-bedroom penthouse, 3+1-bedroom penthouse and 4-bedroom penthouse units over a span of 5 storeys.



Premium Fittings

Have a place you can truly call home with every detail, corner and feature fitted with the utmost care and thought. At Mooi Residences, coming home to luxurious dwelling and prime fixtures is a given.

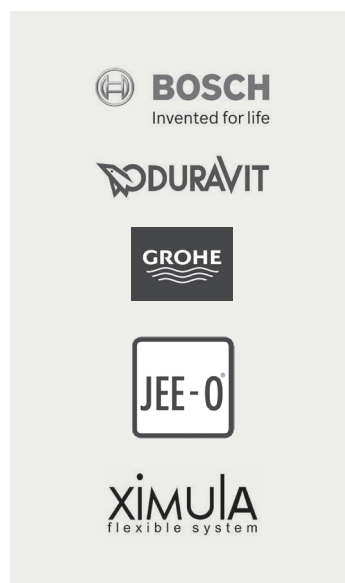


Impression Only

Site Plan



- | | | |
|----------------------------------|-------------------------------|------------------------------|
| 01 Driveway entrance to basement | 07 Pavilion | 13 Open terrace with BBQ |
| 02 Side entrance to level 1 | 08 Sun deck | 14 Genset at attic level |
| 03 Water feature | 09 Gym at level 1 | 15 Water tank at attic level |
| 04 Infinity lap pool | 10 Outdoor fitness at level 1 | 16 Staircase |
| 05 Jacuzzi | 11 Landscape | 17 Bin point |
| 06 Spa pool | 12 Gourmet terrace | |



Impression Only



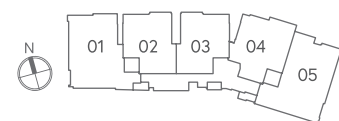
Impression Only

DIAGRAMMATIC CHART



	1	2	3	4	5
Level 5	PH3	PH1	PH1	PH2	C1
Level 4	C	B	B1	A	C1
Level 3	C	B	B1	A	C1
Level 2	C	B	B1	A	C1
Level 1	C-P	B-P		A-P	C1-P
Basement	CAR PARK				

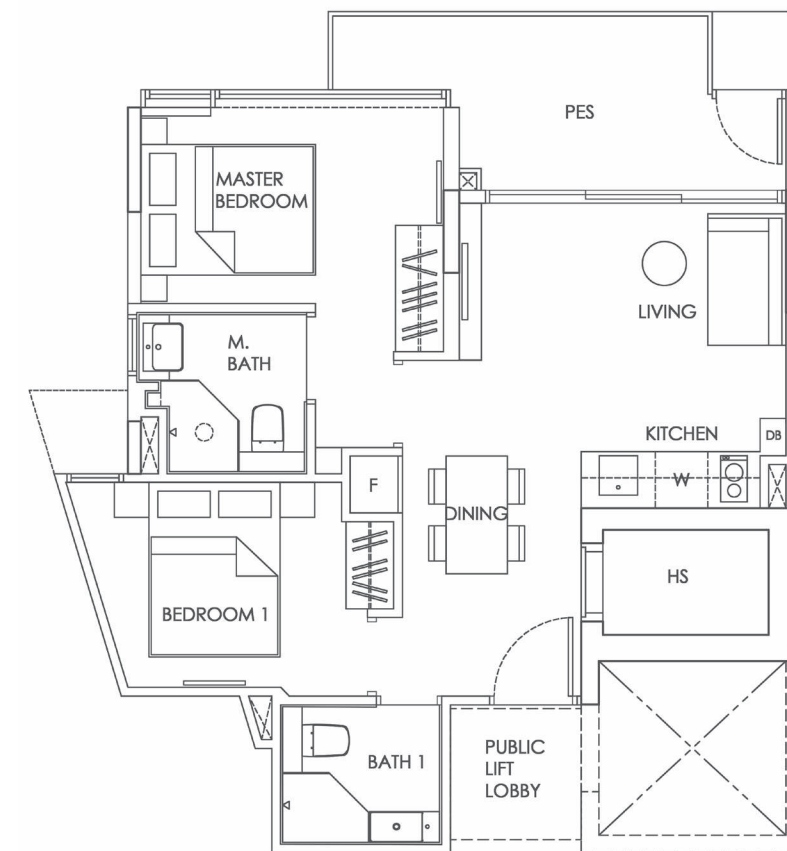
- 2-Bedroom + PES
- 2-Bedroom
- 3-Bedroom + PES
- 3-Bedroom
- 3-Bedroom + Open Roof Terrace Penthouse
- 4-Bedroom + Open Roof Terrace Penthouse
- 3+1-Bedroom + Open Roof Terrace Penthouse



2-BEDROOM + PES



TYPE A-P
63 sqm / 678 sqft
#01-04

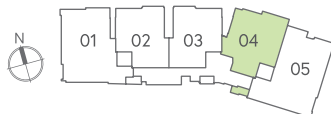
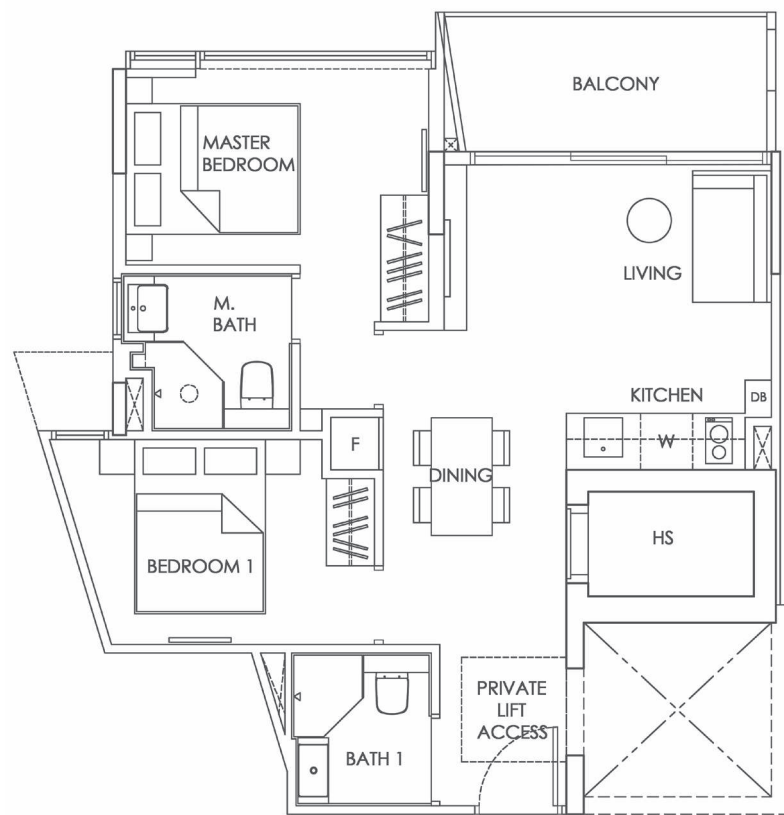


Plans are not to scale and subject to any amendment as may be approved by relevant authorities. All areas are approximate and are subject to final survey.
 HS = Household Shelter; DB = Distribution Board; AC = Air Con Ledge; X = Void; M.Bath = Master Bathroom; Bath = Bathroom; Sto = Storeroom;
 F = Fridge; W = Washing Machine Cum Dryer

2-BEDROOM



TYPE A
62 sqm / 667 sqft
#02-04 to #04-04

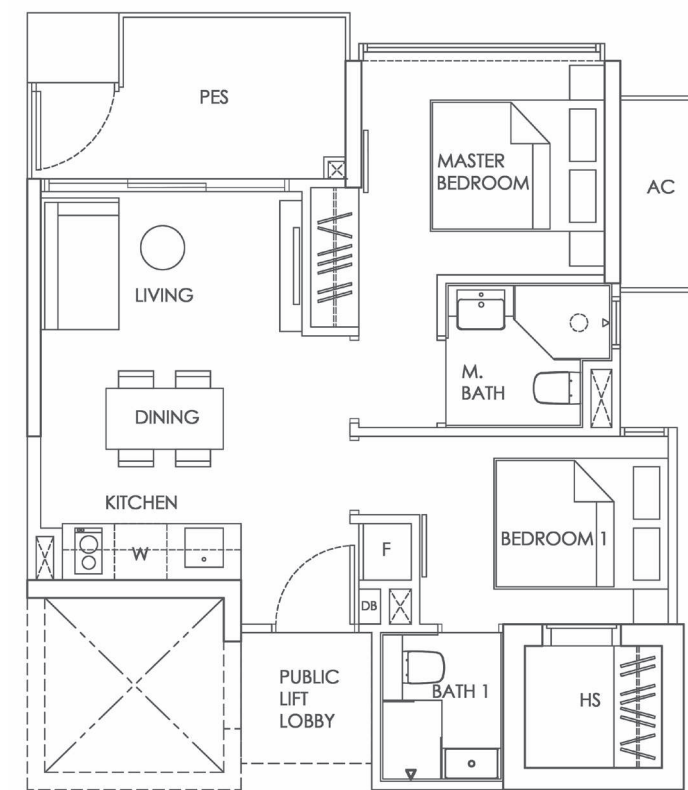


Plans are not to scale and subject to any amendment as may be approved by relevant authorities. All areas are approximate and are subject to final survey.
HS = Household Shelter; DB = Distribution Board; AC = Air Con Ledge; X = Void; M.Bath = Master Bathroom; Bath = Bathroom; Sto = Storeroom; F = Fridge; W = Washing Machine Cum Dryer

2-BEDROOM + PES



TYPE B-P
55 sqm / 592 sqft
#01-02

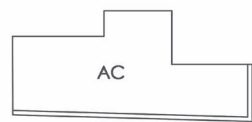
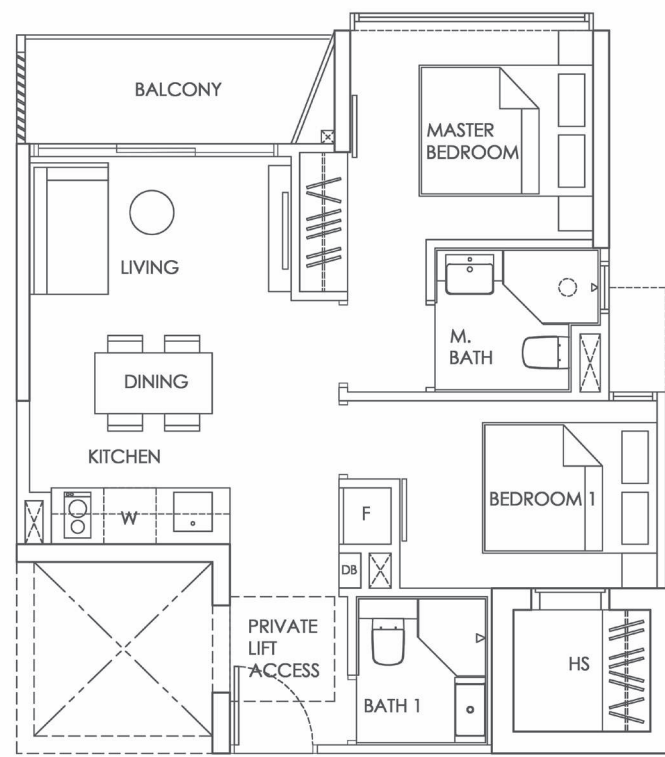


Plans are not to scale and subject to any amendment as may be approved by relevant authorities. All areas are approximate and are subject to final survey.
HS = Household Shelter; DB = Distribution Board; AC = Air Con Ledge; X = Void; M.Bath = Master Bathroom; Bath = Bathroom; Sto = Storeroom; F = Fridge; W = Washing Machine Cum Dryer

2-BEDROOM



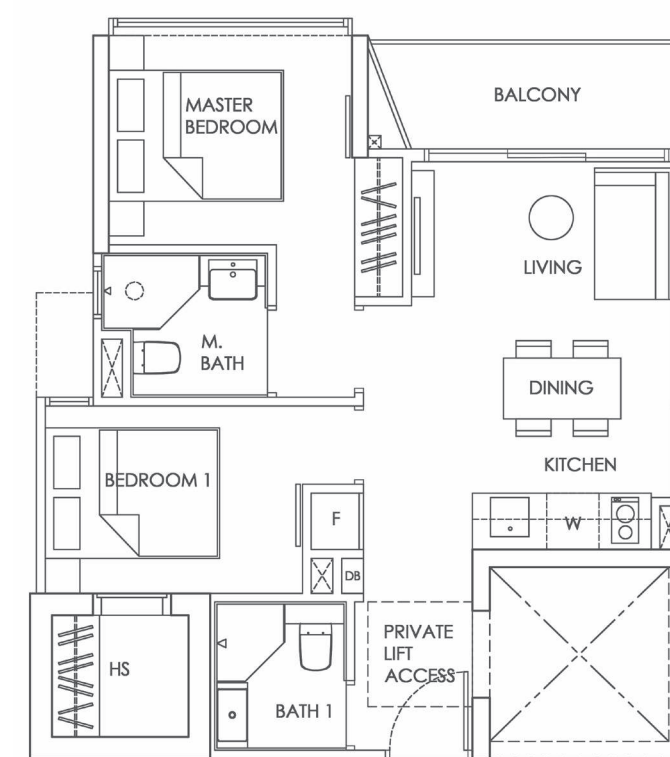
TYPE B
56 sqm / 603 sqft
#02-02 to #04-02



2-BEDROOM



TYPE B1
55 sqm / 592 sqft
#02-03 to #04-03



Plans are not to scale and subject to any amendment as may be approved by relevant authorities. All areas are approximate and are subject to final survey.
HS = Household Shelter; DB = Distribution Board; AC = Air Con Ledge; X = Void; M.Bath = Master Bathroom; Bath = Bathroom; Sto = Storeroom;
F = Fridge; W = Washing Machine Cum Dryer

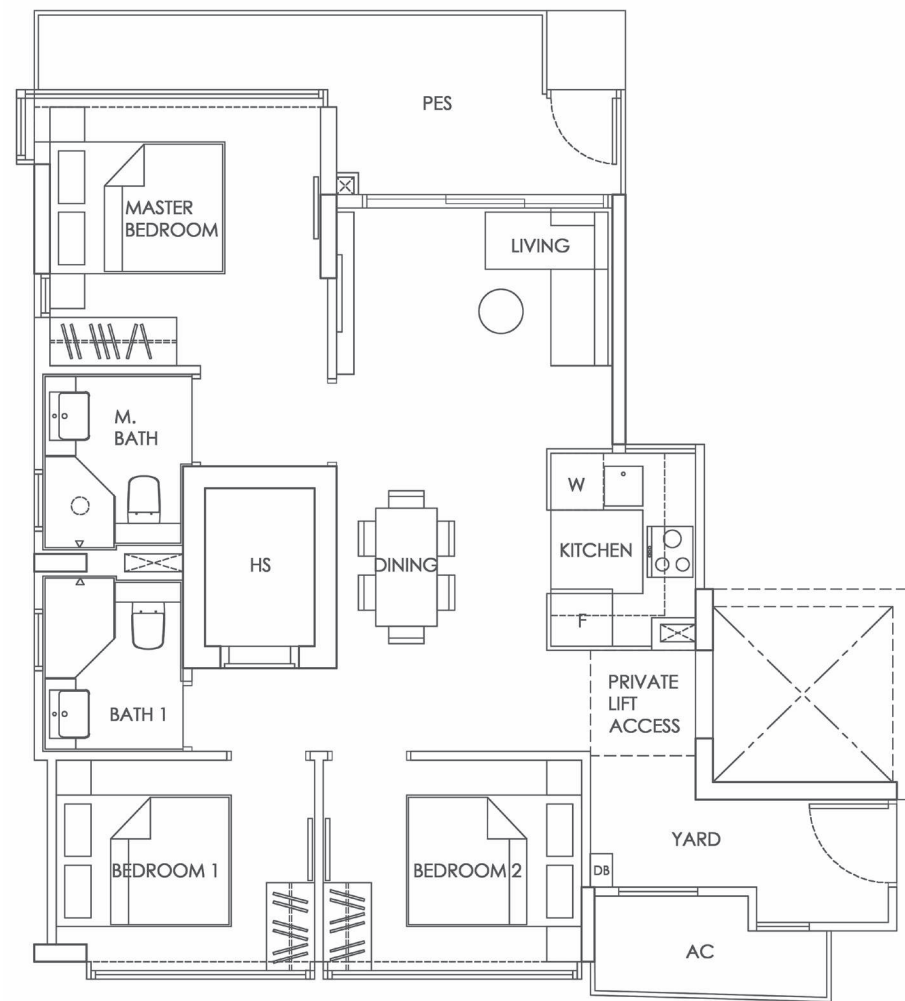


Plans are not to scale and subject to any amendment as may be approved by relevant authorities. All areas are approximate and are subject to final survey.
HS = Household Shelter; DB = Distribution Board; AC = Air Con Ledge; X = Void; M.Bath = Master Bathroom; Bath = Bathroom; Sto = Storeroom;
F = Fridge; W = Washing Machine Cum Dryer

3-BEDROOM + PES



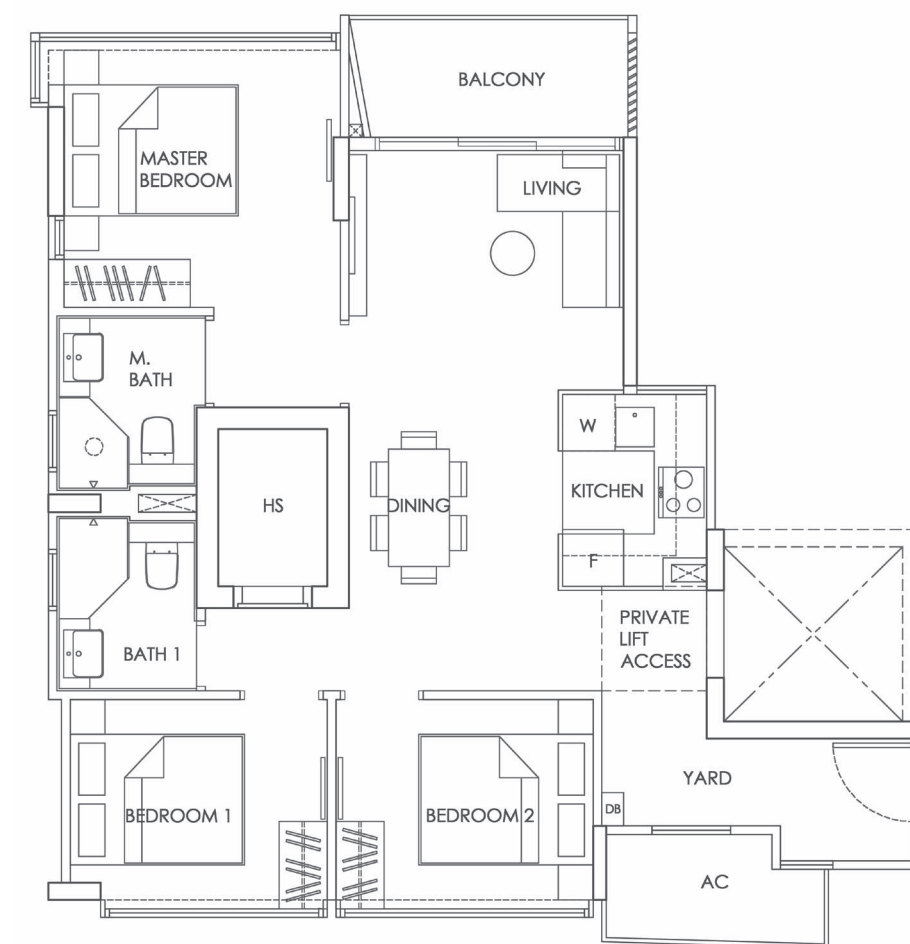
TYPE C-P
84 sqm / 904 sqft
#01-01



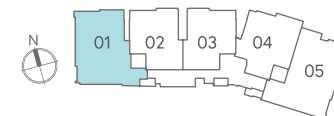
3-BEDROOM



TYPE C
79 sqm / 850 sqft
#02-01 to #04-01



Plans are not to scale and subject to any amendment as may be approved by relevant authorities. All areas are approximate and are subject to final survey.
HS = Household Shelter; DB = Distribution Board; AC = Air Con Ledge; X = Void; M.Bath = Master Bathroom; Bath = Bathroom; Sto = Storeroom;
F = Fridge; W = Washing Machine Cum Dryer

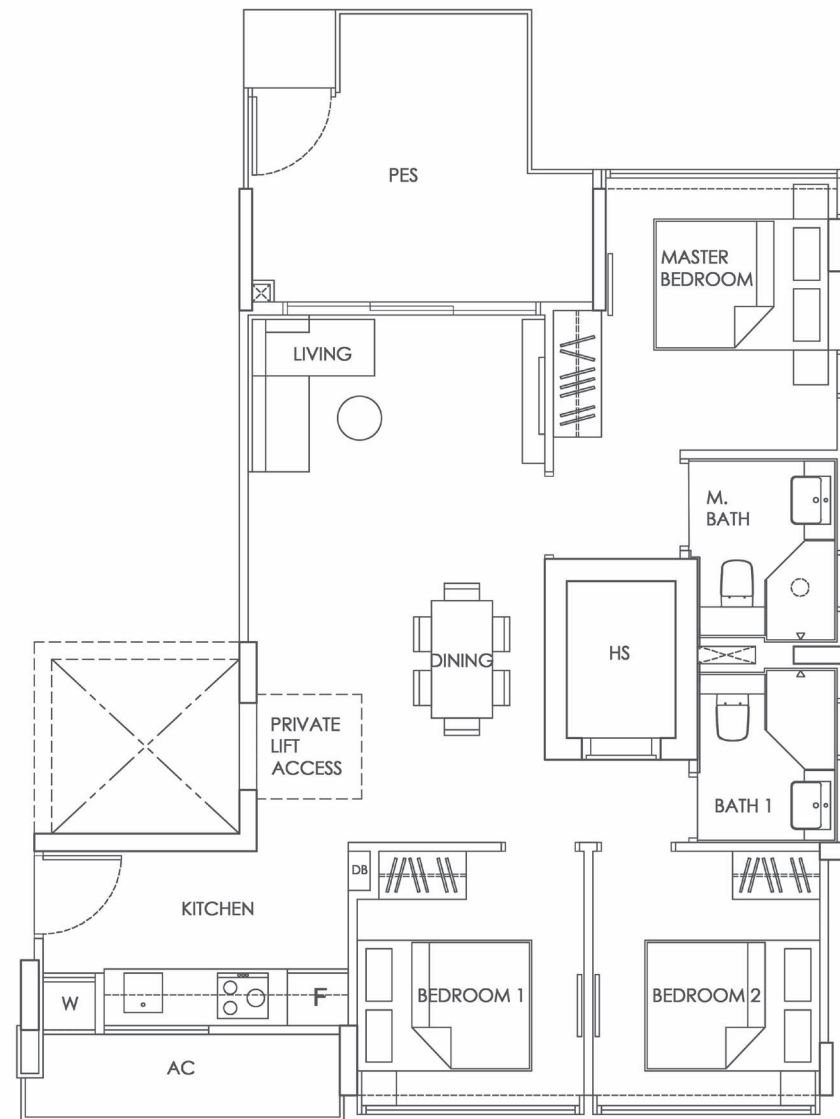


Plans are not to scale and subject to any amendment as may be approved by relevant authorities. All areas are approximate and are subject to final survey.
HS = Household Shelter; DB = Distribution Board; AC = Air Con Ledge; X = Void; M.Bath = Master Bathroom; Bath = Bathroom; Sto = Storeroom;
F = Fridge; W = Washing Machine Cum Dryer

3-BEDROOM + PES



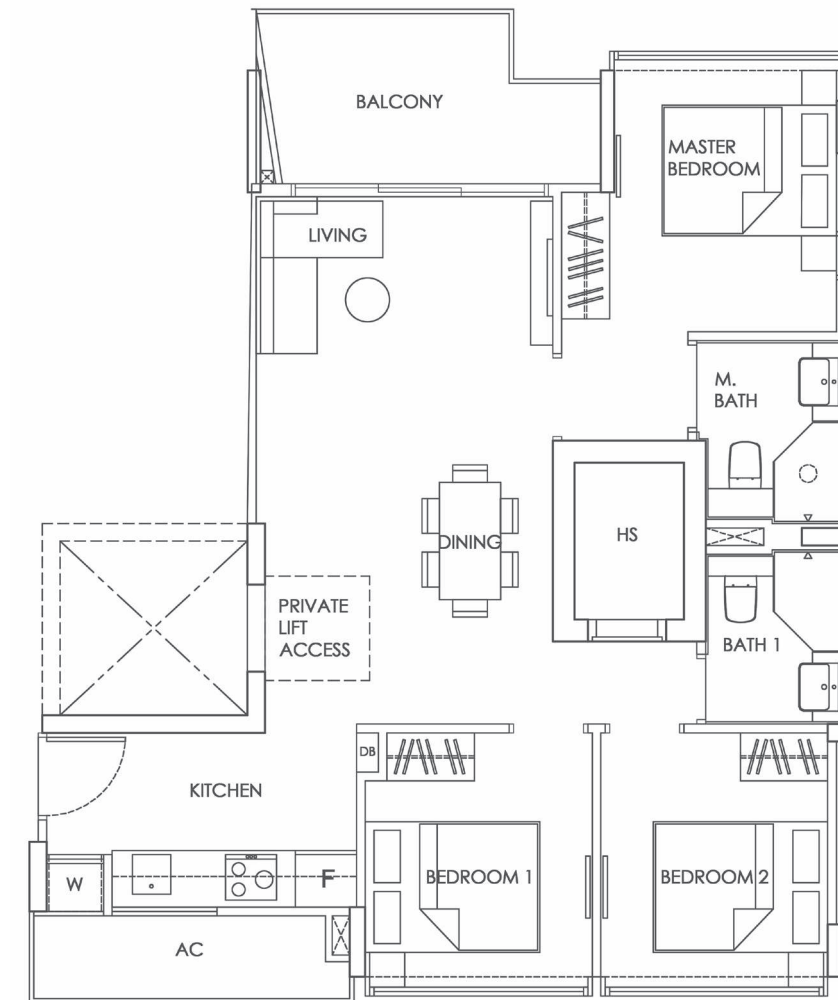
TYPE C1-P
88 sqm / 947 sqft
#01-05



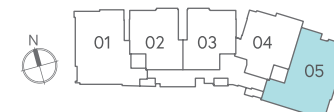
3-BEDROOM



TYPE C1
82 sqm / 883 sqft
#02-05 to #05-05



Plans are not to scale and subject to any amendment as may be approved by relevant authorities. All areas are approximate and are subject to final survey.
HS = Household Shelter; DB = Distribution Board; AC = Air Con Ledge; X = Void; M.Bath = Master Bathroom; Bath = Bathroom; Sto = Storeroom; F = Fridge; W = Washing Machine Cum Dryer

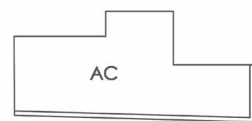
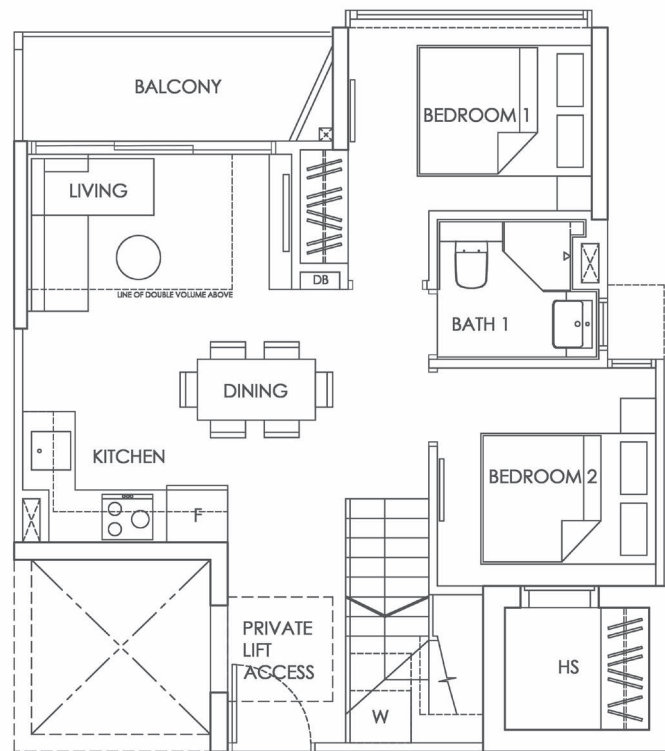


Plans are not to scale and subject to any amendment as may be approved by relevant authorities. All areas are approximate and are subject to final survey.
HS = Household Shelter; DB = Distribution Board; AC = Air Con Ledge; X = Void; M.Bath = Master Bathroom; Bath = Bathroom; Sto = Storeroom; F = Fridge; W = Washing Machine Cum Dryer

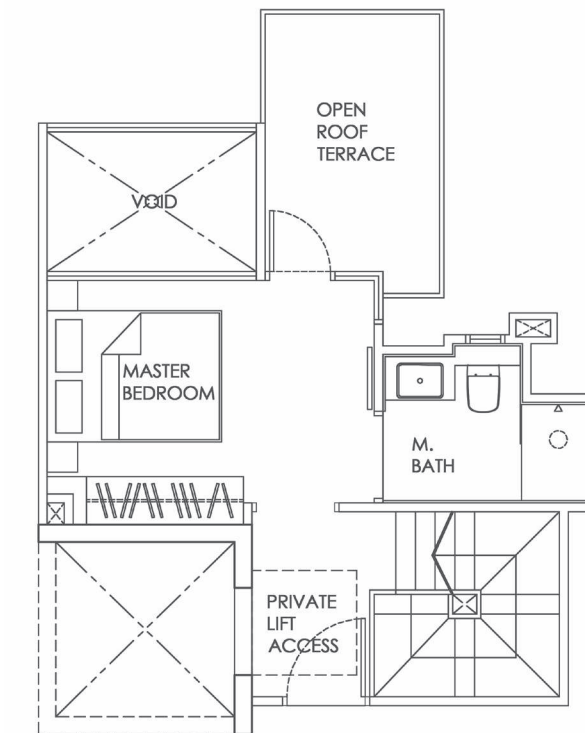
3-BEDROOM + OPEN ROOF TERRACE PENTHOUSE



TYPE PH1
92 sqm / 990 sqft
#05-02



LOWER STOREY



UPPER STOREY

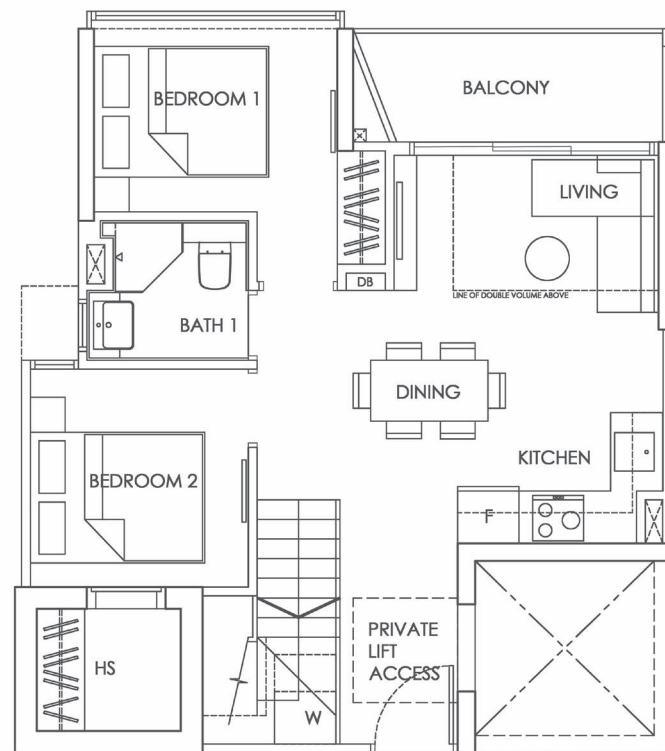


Plans are not to scale and subject to any amendment as may be approved by relevant authorities. All areas are approximate and are subject to final survey.
HS = Household Shelter; DB = Distribution Board; AC = Air Con Ledge; X = Void; M.Bath = Master Bathroom; Bath = Bathroom; Sto = Storeroom;
F = Fridge; W = Washing Machine Cum Dryer

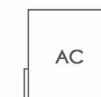
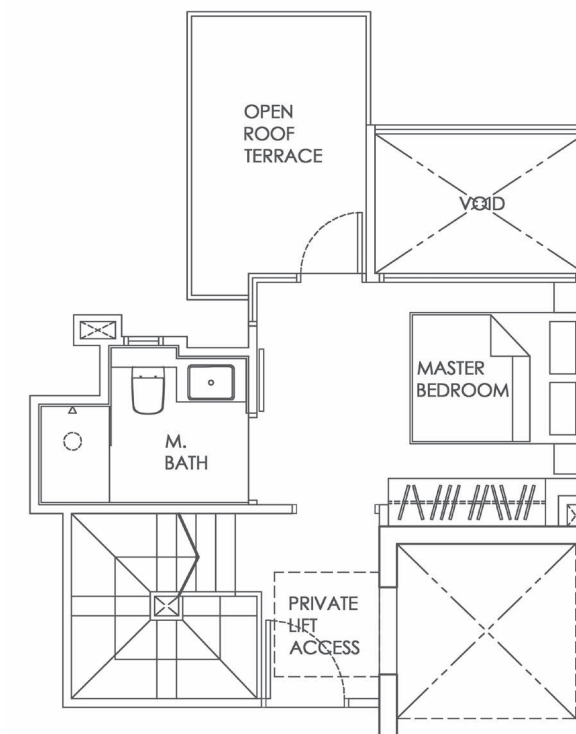
3-BEDROOM + OPEN ROOF TERRACE PENTHOUSE



TYPE PH1
92 sqm / 990 sqft
#05-03



LOWER STOREY



UPPER STOREY

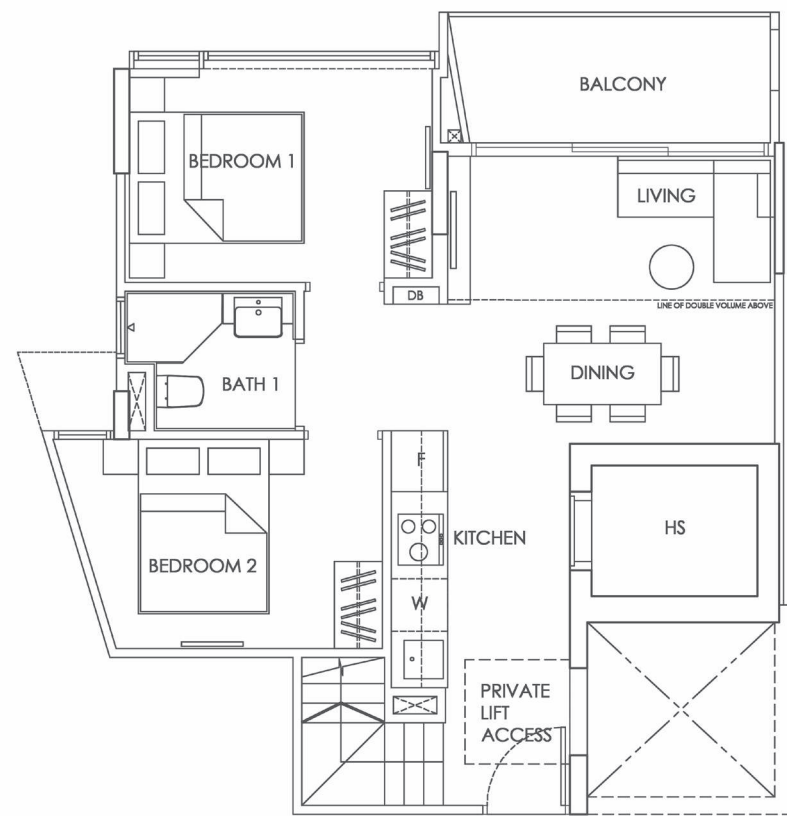


Plans are not to scale and subject to any amendment as may be approved by relevant authorities. All areas are approximate and are subject to final survey.
HS = Household Shelter; DB = Distribution Board; AC = Air Con Ledge; X = Void; M.Bath = Master Bathroom; Bath = Bathroom; Sto = Storeroom;
F = Fridge; W = Washing Machine Cum Dryer

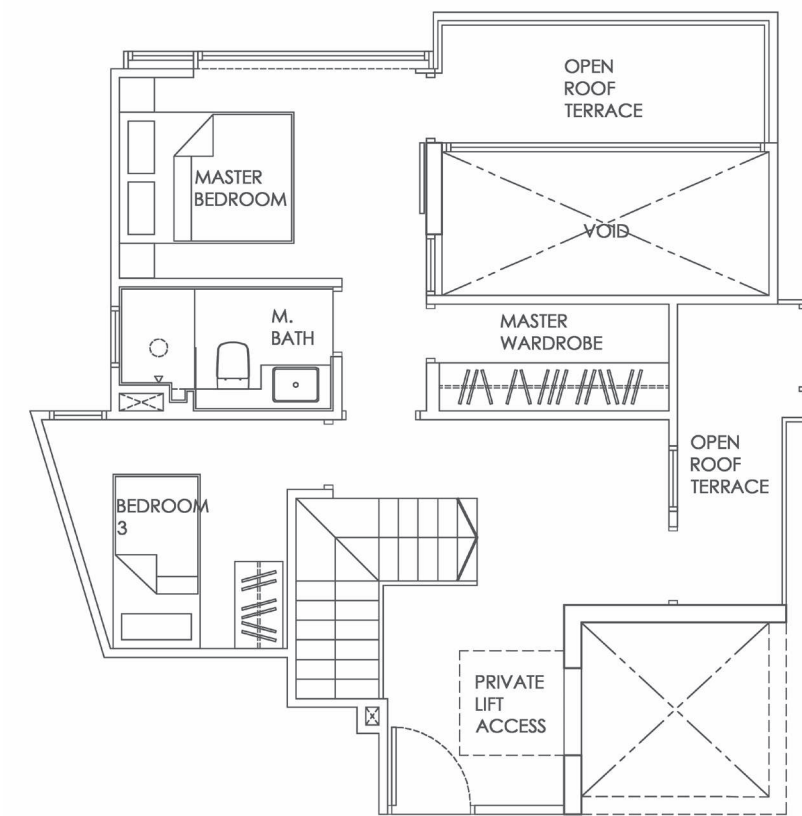
4-BEDROOM + OPEN ROOF TERRACE PENTHOUSE



TYPE PH2
124 sqm / 1,335 sqft
#05-04



LOWER STOREY



UPPER STOREY

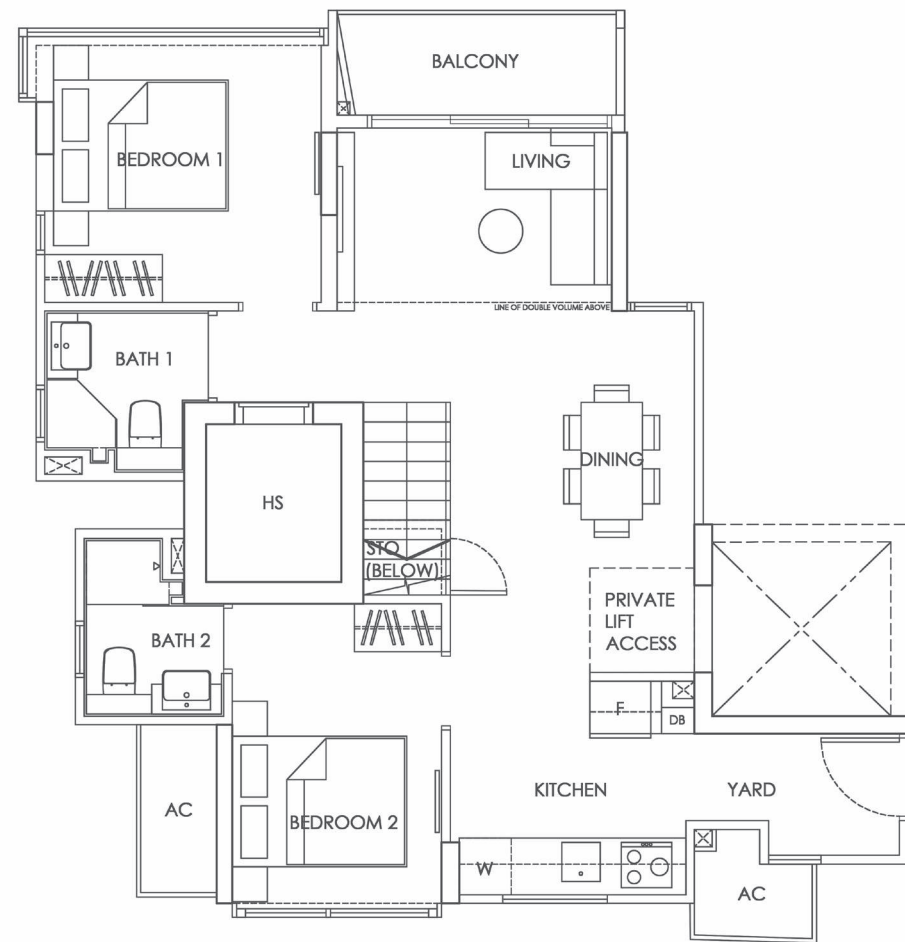


Plans are not to scale and subject to any amendment as may be approved by relevant authorities. All areas are approximate and are subject to final survey.
HS = Household Shelter; DB = Distribution Board; AC = Air Con Ledge; X = Void; M.Bath = Master Bathroom; Bath = Bathroom; Sto = Storeroom;
F = Fridge; W = Washing Machine Cum Dryer

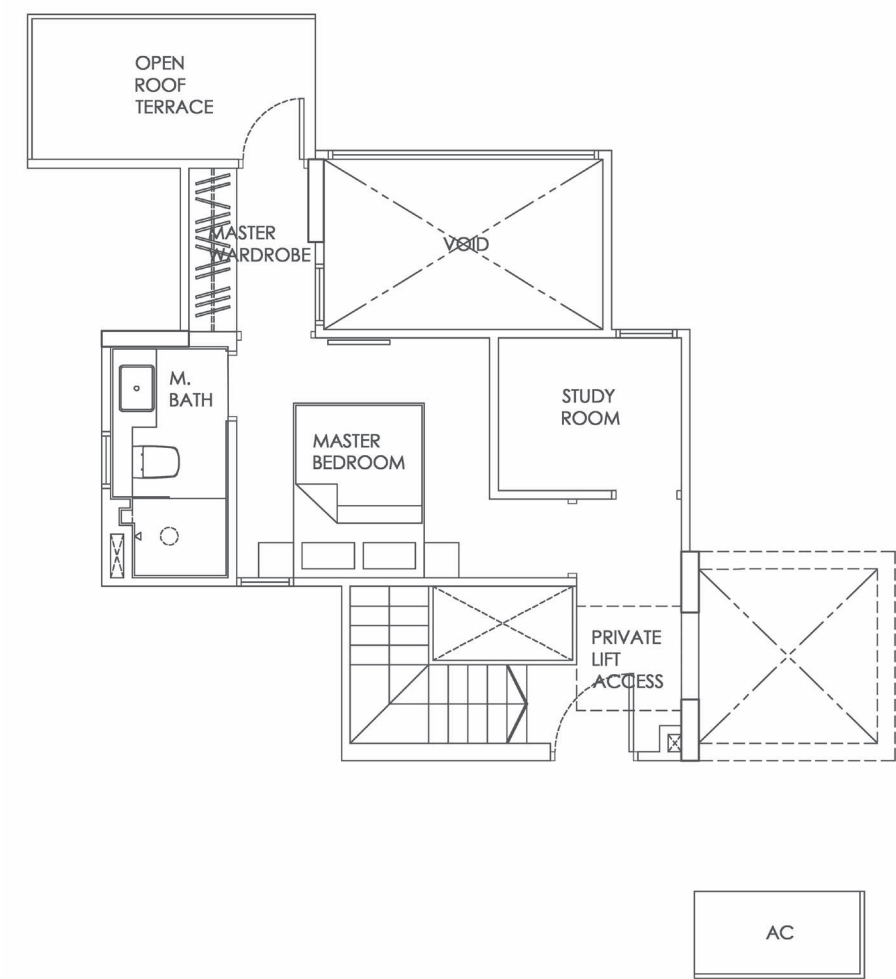
3+1-BEDROOM + OPEN ROOF TERRACE PENTHOUSE



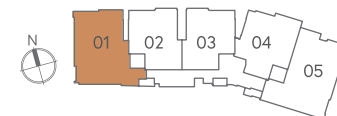
TYPE PH3
 119 sqm / 1,281 sqft
 #05-01



LOWER STOREY



UPPER STOREY



Plans are not to scale and subject to any amendment as may be approved by relevant authorities. All areas are approximate and are subject to final survey.
 HS = Household Shelter; DB = Distribution Board; AC = Air Con Ledge; X = Void; M.Bath = Master Bathroom; Bath = Bathroom; Sto = Storeroom;
 F = Fridge; W = Washing Machine Cum Dryer

DEVELOPED BY

