

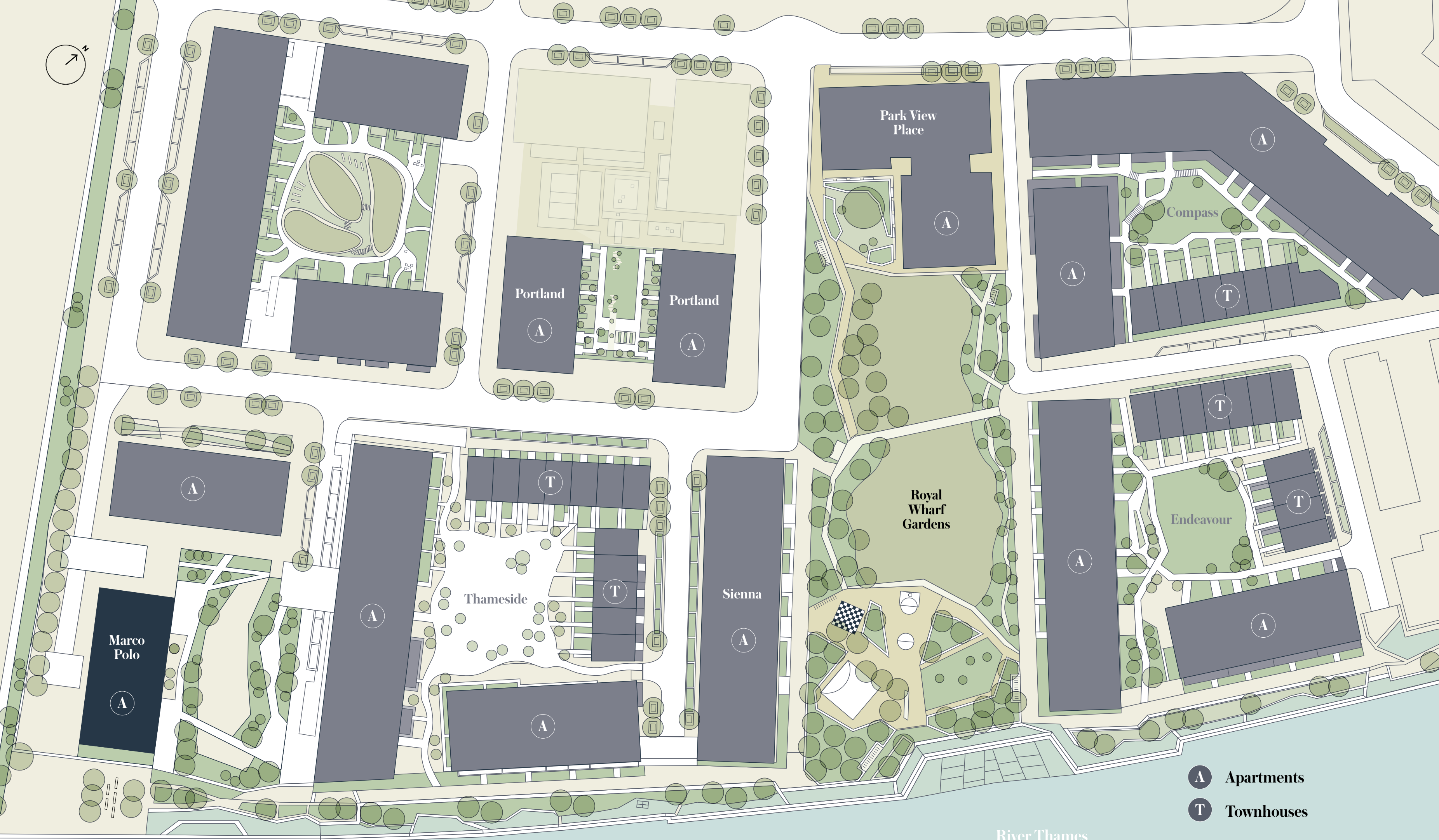


THE
MARCO POLO
BUILDING



MARINER'S
QUARTER

ROYAL WHARF LONDON



Marco Polo
A

A

A

A

A

Thameside
T

T

Portland
A

Portland
A

Sienna
A

Royal Wharf Gardens

Park View Place
A

A

T

Endeavour
T

A

Compass
A

T

A

A Apartments
T Townhouses

River Thames



MARCO POLO

FLOOR

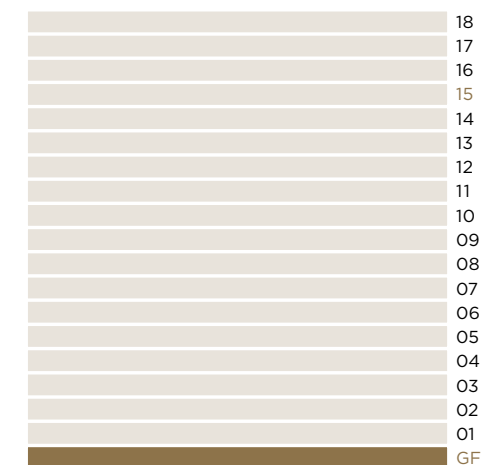
GF

LEGEND

- C: Cupboard
- W: Wardrobe
- FF: Fridge Freezer
- WM: Washer / Dryer
- B: Balcony
- T: Terrace

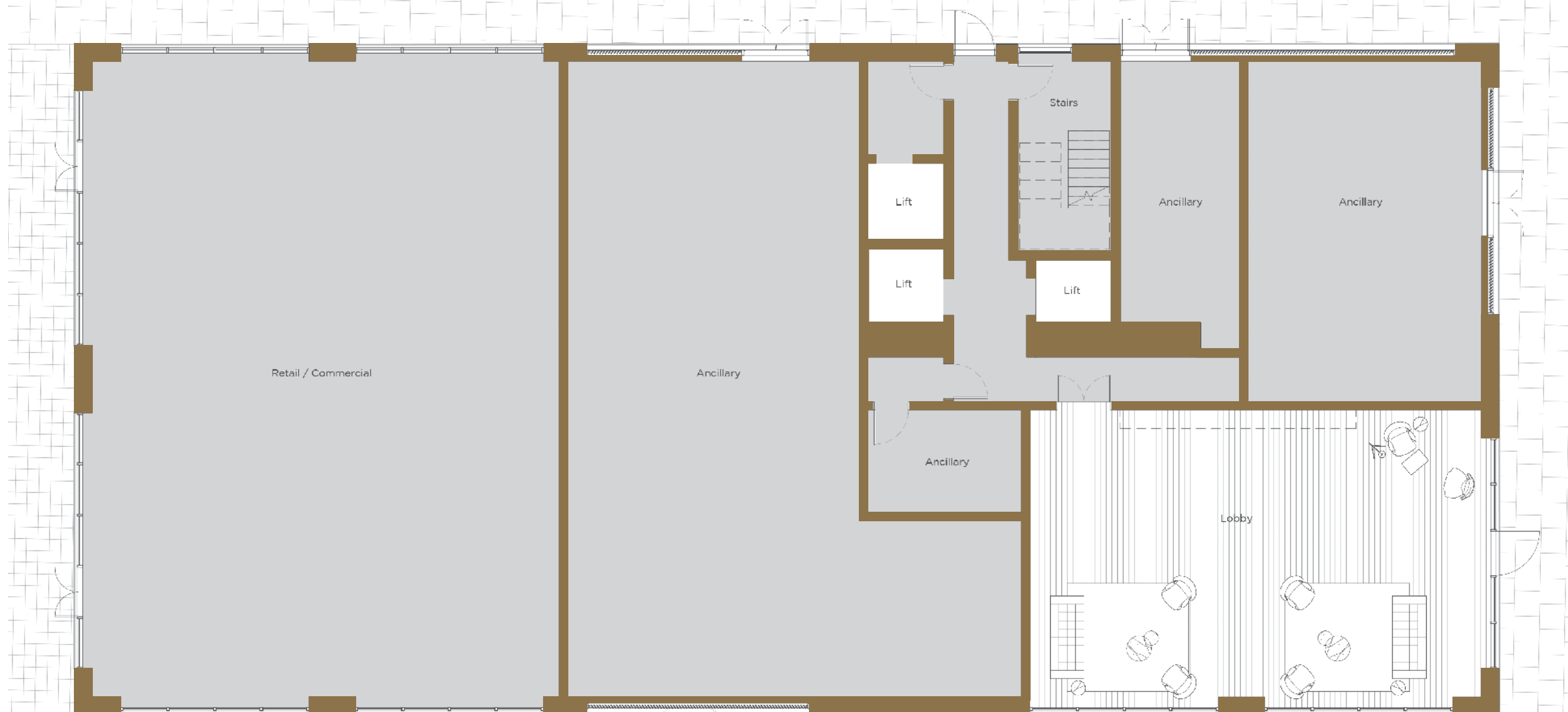


LEVELS



NOTES

River View





MARCO POLO

FLOOR

01

LEGEND

- C: Cupboard
- W: Wardrobe
- FF: Fridge Freezer
- WM: Washer / Dryer
- B: Balcony
- T: Terrace



LEVELS

18
17
16
15
14
13
12
11
10
09
08
07
06
05
04
03
02
01
GF

NOTES

River View





18
02.06

3 BEDROOM
 Internal Area:
 96.6 SqM / 1039.7 SqFt
 Living Area:
 8360 mm x 3720 mm
 Bedroom 1:
 5175 mm x 2780 mm
 Bedroom 2:
 4020 mm x 2905 mm
 Bedroom 3:
 4020 mm x 2840 mm
 Balcony:
 51.7 SqM / 556.4 SqFt

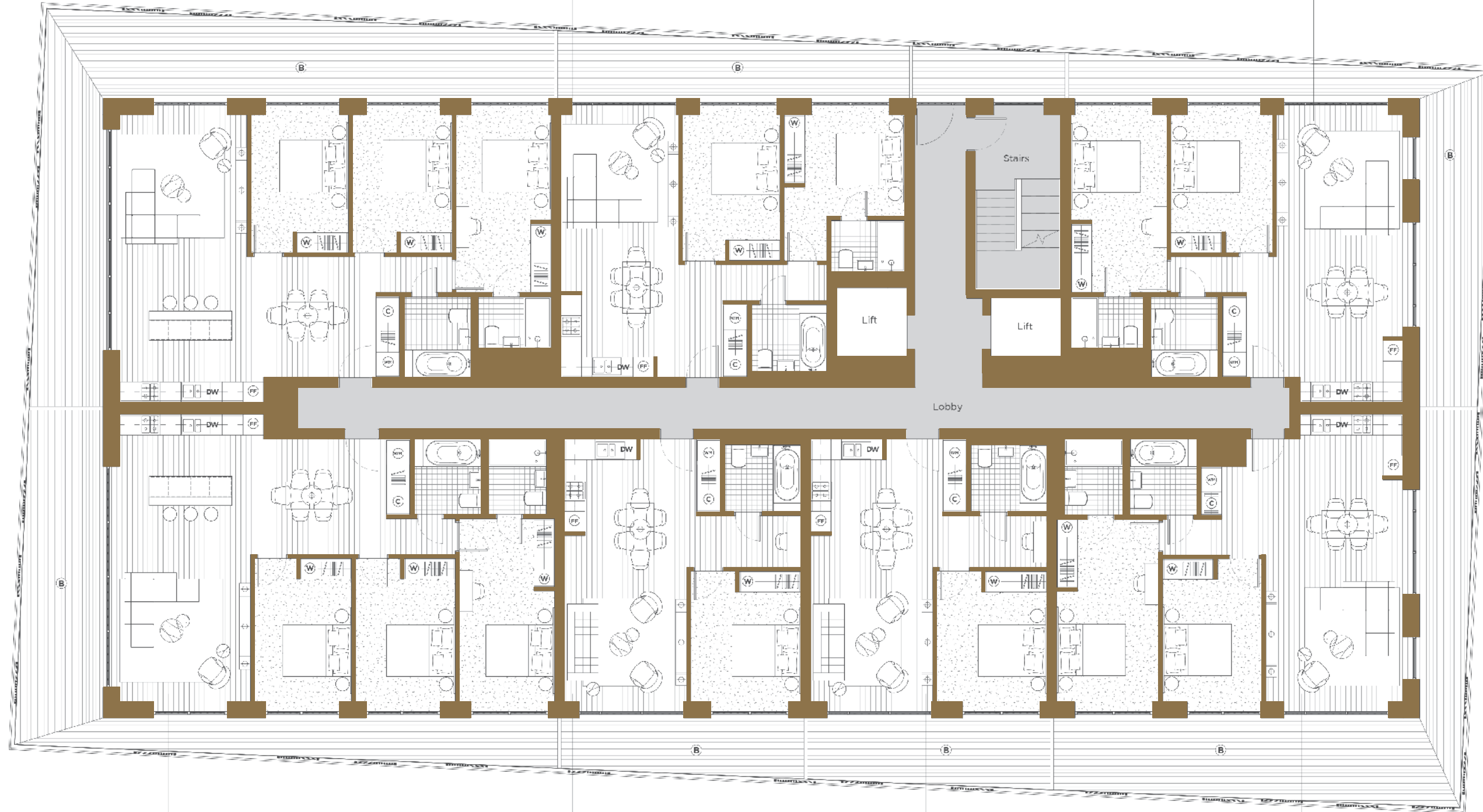
18
02.07

2 BEDROOM
 Internal Area:
 70.0 SqM / 753.4 SqFt
 Living Area:
 7640 mm x 3430 mm
 Bedroom 1:
 3510 mm x 2955 mm
 Bedroom 2:
 4250 mm x 2850 mm
 Balcony:
 17.9 SqM / 192.6 SqFt

18
02.01

2 BEDROOM
 Internal Area:
 73.6 SqM / 792.2 SqFt
 Living Area:
 8360 mm x 3685 mm
 Bedroom 1:
 5175 mm x 2790 mm
 Bedroom 2:
 4020 mm x 2975 mm
 Balcony:
 30.0 SqM / 322.9 SqFt

River View



18
02.05

3 BEDROOM
 Internal Area:
 98.7 SqM / 1062.3 SqFt
 Living Area:
 8360 mm x 3820 mm
 Bedroom 1:
 5330 mm x 2780 mm
 Bedroom 2:
 4175 mm x 2905 mm
 Bedroom 3:
 4175 mm x 2840 mm
 Balcony:
 38.7 SqM / 416.5 SqFt

18
02.04

1 BEDROOM
 Internal Area:
 52.1 SqM / 560.8 SqFt
 Living Area:
 7640 mm x 3560 mm
 Bedroom 1:
 3800 mm x 3210 mm
 Balcony:
 11.4 SqM / 122.7 SqFt

18
02.03

1 BEDROOM
 Internal Area:
 52.1 SqM / 560.8 SqFt
 Living Area:
 7640 mm x 3560 mm
 Bedroom 1:
 3800 mm x 3210 mm
 Balcony:
 13.6 SqM / 146.3 SqFt

18
02.02

2 BEDROOM
 Internal Area:
 77.0 SqM / 828.8 SqFt
 Living Area:
 8360 mm x 4005 mm
 Bedroom 1:
 5310 mm x 2970 mm
 Bedroom 2:
 4160 mm x 2895 mm
 Balcony:
 41.2 SqM / 443.4 SqFt

MARCO POLO

FLOOR

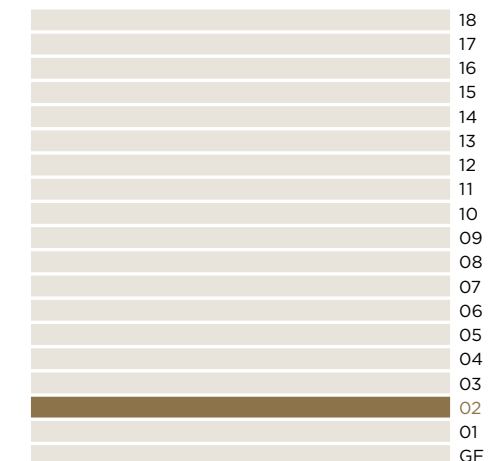
02

LEGEND

- C: Cupboard
- W: Wardrobe
- FF: Fridge Freezer
- WM: Washer / Dryer
- B: Balcony
- T: Terrace



LEVELS



NOTES



18
03.06

3 BEDROOM
Internal Area:
 96.6 SqM / 1039.7 SqFt
Living Area:
 8360 mm x 3720 mm
Bedroom 1:
 5175 mm x 2780 mm
Bedroom 2:
 4020 mm x 2905 mm
Bedroom 3:
 4020 mm x 2840 mm
Balcony:
 51.7 SqM / 556.4 SqFt

18
03.07

2 BEDROOM
Internal Area:
 70.0 SqM / 753.1 SqFt
Living Area:
 7640 mm x 3430 mm
Bedroom 1:
 3510 mm x 2955 mm
Bedroom 2:
 4250 mm x 2850 mm
Balcony:
 17.9 SqM / 192.6 SqFt

18
03.01

2 BEDROOM
Internal Area:
 73.6 SqM / 792.2 SqFt
Living Area:
 8360 mm x 3685 mm
Bedroom 1:
 5175 mm x 2790 mm
Bedroom 2:
 4020 mm x 2975 mm
Balcony:
 30.0 SqM / 322.9 SqFt



River View

18
03.05

3 BEDROOM
Internal Area:
 98.7 SqM / 1062.3 SqFt
Living Area:
 8360 mm x 3820 mm
Bedroom 1:
 5330 mm x 2780 mm
Bedroom 2:
 4175 mm x 2905 mm
Bedroom 3:
 4175 mm x 2840 mm
Balcony:
 38.7 SqM / 416.5 SqFt

18
03.04

1 BEDROOM
Internal Area:
 52.1 SqM / 560.8 SqFt
Living Area:
 7640 mm x 3560 mm
Bedroom 1:
 3800 mm x 3210 mm
Balcony:
 11.4 SqM / 122.7 SqFt

18
03.03

1 BEDROOM
Internal Area:
 52.1 SqM / 560.8 SqFt
Living Area:
 7640 mm x 3560 mm
Bedroom 1:
 3800 mm x 3210 mm
Balcony:
 13.6 SqM / 146.3 SqFt

18
03.02

2 BEDROOM
Internal Area:
 77.0 SqM / 828.8 SqFt
Living Area:
 8360 mm x 4005 mm
Bedroom 1:
 5310 mm x 2970 mm
Bedroom 2:
 4160 mm x 2895 mm
Balcony:
 41.2 SqM / 443.1 SqFt

MARCO POLO

FLOOR

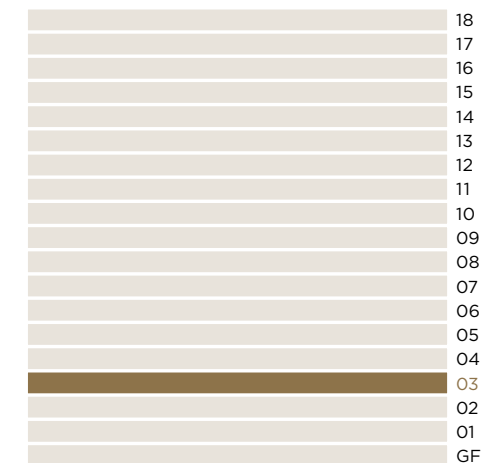
03

LEGEND

- C: Cupboard
- W: Wardrobe
- FF: Fridge Freezer
- WM: Washer / Dryer
- B: Balcony
- T: Terrace



LEVELS



NOTES



18
04.06

3 BEDROOM
 Internal Area:
 96.6 SqM / 1039.7 SqFt
 Living Area:
 8360 mm x 3720 mm
 Bedroom 1:
 5175 mm x 2780 mm
 Bedroom 2:
 4020 mm x 2905 mm
 Bedroom 3:
 4020 mm x 2840 mm
 Balcony:
 51.7 SqM / 556.4 SqFt

18
04.07

2 BEDROOM
 Internal Area:
 70.0 SqM / 753.4 SqFt
 Living Area:
 7640 mm x 3430 mm
 Bedroom 1:
 3510 mm x 2955 mm
 Bedroom 2:
 4250 mm x 2850 mm
 Balcony:
 17.9 SqM / 192.6 SqFt

18
04.01

2 BEDROOM
 Internal Area:
 73.6 SqM / 792.2 SqFt
 Living Area:
 8360 mm x 3685 mm
 Bedroom 1:
 5175 mm x 2790 mm
 Bedroom 2:
 4020 mm x 2975 mm
 Balcony:
 30.0 SqM / 322.9 SqFt



River View

18
04.05

3 BEDROOM
 Internal Area:
 98.7 SqM / 1062.3 SqFt
 Living Area:
 8360 mm x 3820 mm
 Bedroom 1:
 5330 mm x 2780 mm
 Bedroom 2:
 4175 mm x 2905 mm
 Bedroom 3:
 4175 mm x 2840 mm
 Balcony:
 38.7 SqM / 416.5 SqFt

18
04.04

1 BEDROOM
 Internal Area:
 52.1 SqM / 560.8 SqFt
 Living Area:
 7640 mm x 3560 mm
 Bedroom 1:
 3800 mm x 3210 mm
 Balcony:
 11.4 SqM / 122.7 SqFt

18
04.03

1 BEDROOM
 Internal Area:
 52.1 SqM / 560.8 SqFt
 Living Area:
 7640 mm x 3560 mm
 Bedroom 1:
 3800 mm x 3210 mm
 Balcony:
 13.6 SqM / 146.3 SqFt

18
04.02

2 BEDROOM
 Internal Area:
 77.0 SqM / 828.8 SqFt
 Living Area:
 8360 mm x 4005 mm
 Bedroom 1:
 5310 mm x 2970 mm
 Bedroom 2:
 4160 mm x 2895 mm
 Balcony:
 41.2 SqM / 443.1 SqFt

MARCO POLO

FLOOR

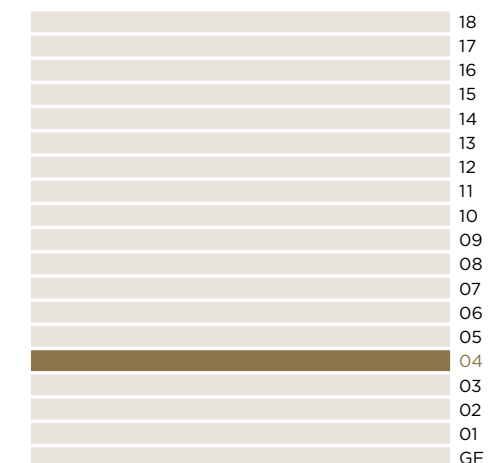
04

LEGEND

- C: Cupboard
- W: Wardrobe
- FF: Fridge Freezer
- WM: Washer / Dryer
- B: Balcony
- T: Terrace



LEVELS



NOTES



18
05.06

3 BEDROOM
 Internal Area: 96.6 SqM / 1039.7 SqFt
 Living Area: 8360 mm x 3720 mm
 Bedroom 1: 5175 mm x 2780 mm
 Bedroom 2: 4020 mm x 2905 mm
 Bedroom 3: 4020 mm x 2840 mm
 Balcony: 51.7 SqM / 556.4 SqFt

18
05.07

2 BEDROOM
 Internal Area: 70.0 SqM / 753 SqFt
 Living Area: 7640 mm x 3430 mm
 Bedroom 1: 3510 mm x 2955 mm
 Bedroom 2: 4250 mm x 2850 mm
 Balcony: 17.9 SqM / 192.6 SqFt

18
05.01

2 BEDROOM
 Internal Area: 73.6 SqM / 792.2 SqFt
 Living Area: 8360 mm x 3685 mm
 Bedroom 1: 5175 mm x 2790 mm
 Bedroom 2: 4020 mm x 2975 mm
 Balcony: 30.0 SqM / 322.9 SqFt

River View



18
05.05

3 BEDROOM
 Internal Area: 98.7 SqM / 1062.3 SqFt
 Living Area: 8360 mm x 3820 mm
 Bedroom 1: 5330 mm x 2780 mm
 Bedroom 2: 4175 mm x 2905 mm
 Bedroom 3: 4175 mm x 2810 mm
 Balcony: 38.7 SqM / 416.5 SqFt

18
05.04

1 BEDROOM
 Internal Area: 52.1 SqM / 560.8 SqFt
 Living Area: 7640 mm x 3560 mm
 Bedroom 1: 3800 mm x 3210 mm
 Balcony: 11.4 SqM / 122.7 SqFt

18
05.03

1 BEDROOM
 Internal Area: 52.1 SqM / 560.8 SqFt
 Living Area: 7640 mm x 3560 mm
 Bedroom 1: 3800 mm x 3210 mm
 Balcony: 13.6 SqM / 146.3 SqFt

18
05.02

2 BEDROOM
 Internal Area: 77.0 SqM / 828.8 SqFt
 Living Area: 8360 mm x 4005 mm
 Bedroom 1: 5310 mm x 2970 mm
 Bedroom 2: 4160 mm x 2895 mm
 Balcony: 41.2 SqM / 443.4 SqFt

MARCO POLO

FLOOR

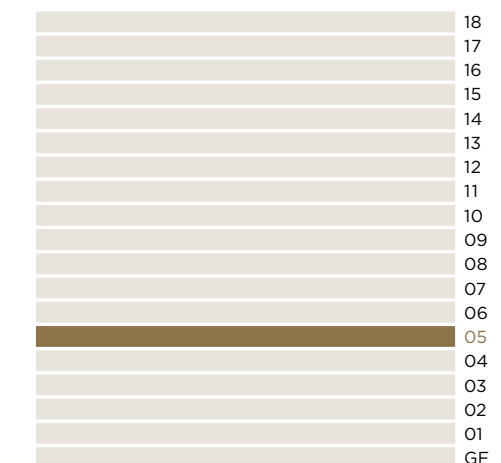
05

LEGEND

- C: Cupboard
- W: Wardrobe
- FF: Fridge Freezer
- WM: Washer / Dryer
- B: Balcony
- T: Terrace



LEVELS



NOTES



18
06.06

3 BEDROOM
Internal Area:
 96.6 SqM / 1039.7 SqFt
Living Area:
 8360 mm x 3720 mm
Bedroom 1:
 5175 mm x 2780 mm
Bedroom 2:
 4020 mm x 2905 mm
Bedroom 3:
 4020 mm x 2840 mm
Balcony:
 51.7 SqM / 556.4 SqFt

18
06.07

2 BEDROOM
Internal Area:
 70.0 SqM / 753.4 SqFt
Living Area:
 7640 mm x 3430 mm
Bedroom 1:
 3510 mm x 2955 mm
Bedroom 2:
 4250 mm x 2850 mm
Balcony:
 17.9 SqM / 192.6 SqFt

18
06.01

2 BEDROOM
Internal Area:
 73.6 SqM / 792.2 SqFt
Living Area:
 8360 mm x 3685 mm
Bedroom 1:
 5175 mm x 2790 mm
Bedroom 2:
 4020 mm x 2975 mm
Balcony:
 30.0 SqM / 322.9 SqFt



River View

18
06.05

3 BEDROOM
Internal Area:
 98.7 SqM / 1062.3 SqFt
Living Area:
 8360 mm x 3820 mm
Bedroom 1:
 5330 mm x 2780 mm
Bedroom 2:
 4175 mm x 2905 mm
Bedroom 3:
 4175 mm x 2840 mm
Balcony:
 38.7 SqM / 416.5 SqFt

18
06.04

1 BEDROOM
Internal Area:
 52.1 SqM / 560.8 SqFt
Living Area:
 7640 mm x 3560 mm
Bedroom 1:
 3800 mm x 3210 mm
Balcony:
 11.4 SqM / 122.7 SqFt

18
06.03

1 BEDROOM
Internal Area:
 52.1 SqM / 560.8 SqFt
Living Area:
 7640 mm x 3560 mm
Bedroom 1:
 3800 mm x 3210 mm
Balcony:
 13.6 SqM / 146.3 SqFt

18
06.02

2 BEDROOM
Internal Area:
 77.0 SqM / 828.8 SqFt
Living Area:
 8360 mm x 4005 mm
Bedroom 1:
 5310 mm x 2970 mm
Bedroom 2:
 4160 mm x 2895 mm
Balcony:
 41.2 SqM / 443.1 SqFt

MARCO POLO

FLOOR

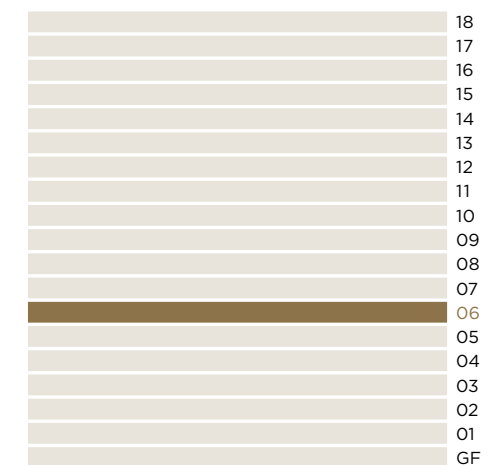
06

LEGEND

- C: Cupboard
- W: Wardrobe
- FF: Fridge Freezer
- WM: Washer / Dryer
- B: Balcony
- T: Terrace



LEVELS



NOTES



18
07.06

3 BEDROOM
Internal Area: 96.6 SqM / 1039.7 SqFt
Living Area: 8360 mm x 3720 mm
Bedroom 1: 5175 mm x 2780 mm
Bedroom 2: 4020 mm x 2905 mm
Bedroom 3: 4020 mm x 2840 mm
Balcony: 51.7 SqM / 556.4 SqFt

18
07.07

2 BEDROOM
Internal Area: 70.0 SqM / 753.1 SqFt
Living Area: 7640 mm x 3430 mm
Bedroom 1: 3510 mm x 2955 mm
Bedroom 2: 4250 mm x 2850 mm
Balcony: 17.9 SqM / 192.6 SqFt

18
07.01

2 BEDROOM
Internal Area: 73.6 SqM / 792.2 SqFt
Living Area: 8360 mm x 3685 mm
Bedroom 1: 5175 mm x 2790 mm
Bedroom 2: 4020 mm x 2975 mm
Balcony: 30.0 SqM / 322.9 SqFt



River View

18
07.05

3 BEDROOM
Internal Area: 98.7 SqM / 1062.3 SqFt
Living Area: 8360 mm x 3820 mm
Bedroom 1: 5330 mm x 2780 mm
Bedroom 2: 4175 mm x 2905 mm
Bedroom 3: 4175 mm x 2840 mm
Balcony: 38.7 SqM / 416.5 SqFt

18
07.04

1 BEDROOM
Internal Area: 52.1 SqM / 560.8 SqFt
Living Area: 7640 mm x 3560 mm
Bedroom 1: 3800 mm x 3210 mm
Balcony: 11.4 SqM / 122.7 SqFt

18
07.03

1 BEDROOM
Internal Area: 52.1 SqM / 560.8 SqFt
Living Area: 7640 mm x 3560 mm
Bedroom 1: 3800 mm x 3210 mm
Balcony: 13.6 SqM / 146.3 SqFt

18
07.02

2 BEDROOM
Internal Area: 77.0 SqM / 828.8 SqFt
Living Area: 8360 mm x 4005 mm
Bedroom 1: 5310 mm x 2970 mm
Bedroom 2: 4160 mm x 2895 mm
Balcony: 41.2 SqM / 443.1 SqFt

MARCO POLO

FLOOR

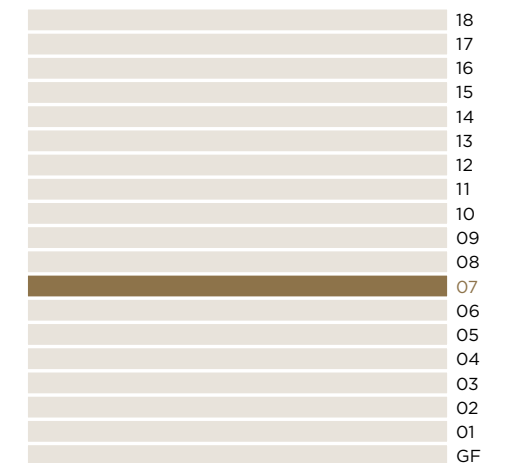
07

LEGEND

- C: Cupboard
- W: Wardrobe
- FF: Fridge Freezer
- WM: Washer / Dryer
- B: Balcony
- T: Terrace



LEVELS



NOTES



18
08.06

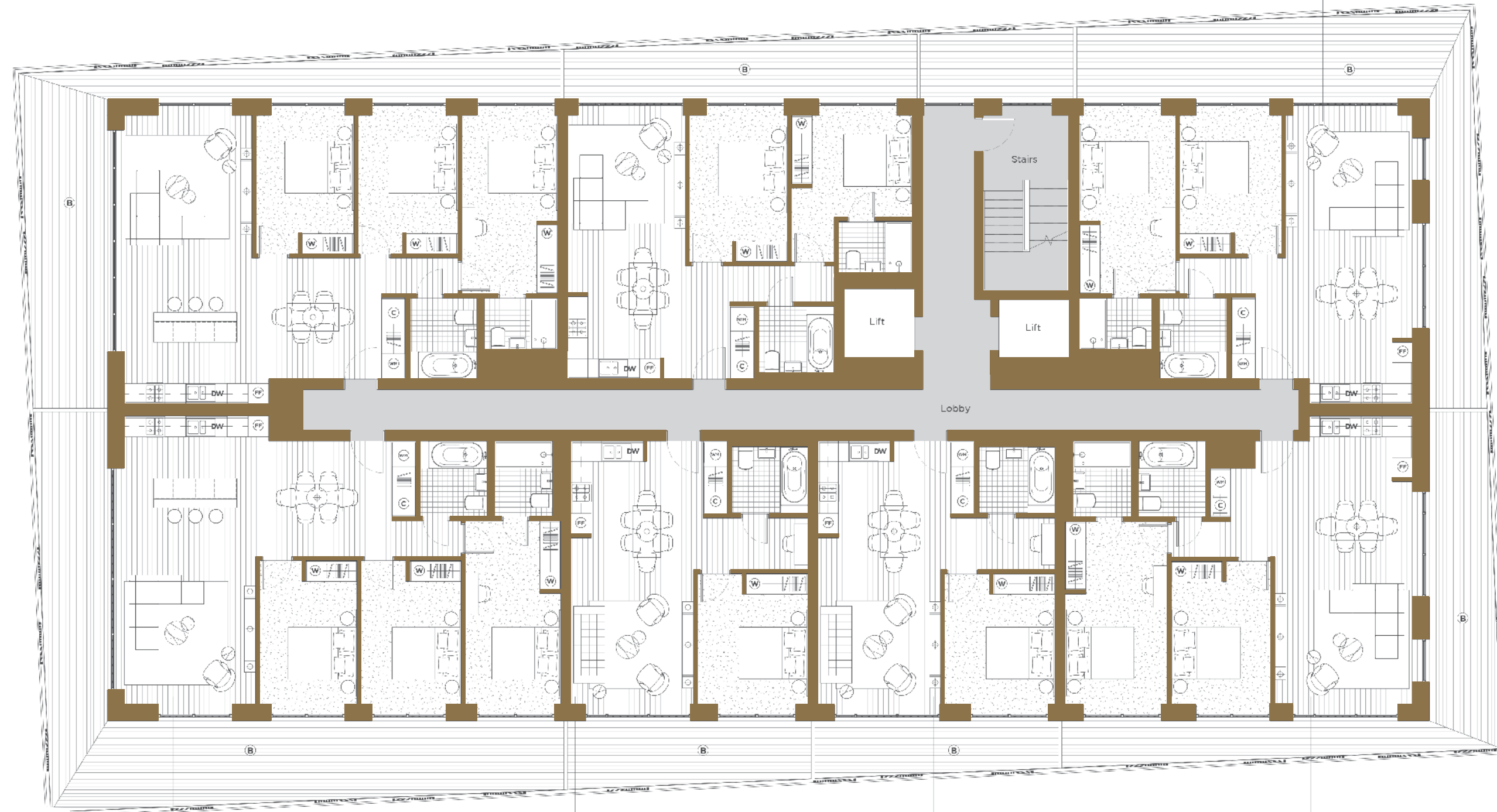
3 BEDROOM
Internal Area:
 96.6 SqM / 1039.7 SqFt
Living Area:
 8360 mm x 3720 mm
Bedroom 1:
 5175 mm x 2780 mm
Bedroom 2:
 4020 mm x 2905 mm
Bedroom 3:
 4020 mm x 2840 mm
Balcony:
 38.4 SqM / 413.3 SqFt

18
08.07

2 BEDROOM
Internal Area:
 70.0 SqM / 753.1 SqFt
Living Area:
 7640 mm x 3430 mm
Bedroom 1:
 3510 mm x 2955 mm
Bedroom 2:
 4250 mm x 2850 mm
Balcony:
 17.1 SqM / 184.0 SqFt

18
08.01

2 BEDROOM
Internal Area:
 73.6 SqM / 792.2 SqFt
Living Area:
 8360 mm x 3685 mm
Bedroom 1:
 5175 mm x 2790 mm
Bedroom 2:
 4020 mm x 2975 mm
Balcony:
 40.1 SqM / 431.6 SqFt



River View

18
08.05

3 BEDROOM
Internal Area:
 98.7 SqM / 1062.3 SqFt
Living Area:
 8360 mm x 3820 mm
Bedroom 1:
 5330 mm x 2780 mm
Bedroom 2:
 4175 mm x 2905 mm
Bedroom 3:
 4175 mm x 2840 mm
Balcony:
 52.1 SqM / 560.7 SqFt

18
08.04

1 BEDROOM
Internal Area:
 52.1 SqM / 560.8 SqFt
Living Area:
 7640 mm x 3560 mm
Bedroom 1:
 3800 mm x 3210 mm
Balcony:
 12.9 SqM / 138.8 SqFt

18
08.03

1 BEDROOM
Internal Area:
 52.1 SqM / 560.8 SqFt
Living Area:
 7640 mm x 3560 mm
Bedroom 1:
 3800 mm x 3210 mm
Balcony:
 10.7 SqM / 115.1 SqFt

18
08.02

2 BEDROOM
Internal Area:
 77.0 SqM / 828.8 SqFt
Living Area:
 8360 mm x 4005 mm
Bedroom 1:
 5310 mm x 2970 mm
Bedroom 2:
 4160 mm x 2895 mm
Balcony:
 30.7 SqM / 330.1 SqFt

MARCO POLO

FLOOR

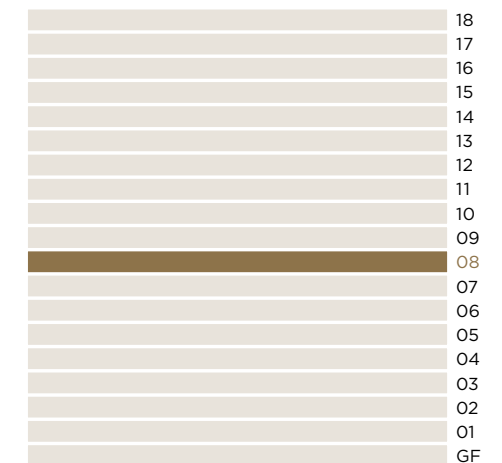
08

LEGEND

- C: Cupboard
- W: Wardrobe
- FF: Fridge Freezer
- WM: Washer / Dryer
- B: Balcony
- T: Terrace



LEVELS



NOTES



18
09.06

3 BEDROOM
Internal Area:
 96.6 SqM / 1039.7 SqFt
Living Area:
 8360 mm x 3720 mm
Bedroom 1:
 5175 mm x 2780 mm
Bedroom 2:
 4020 mm x 2905 mm
Bedroom 3:
 4020 mm x 2840 mm
Balcony:
 38.4 SqM / 413.3 SqFt

18
09.07

2 BEDROOM
Internal Area:
 70.0 SqM / 753.1 SqFt
Living Area:
 7640 mm x 3430 mm
Bedroom 1:
 3510 mm x 2955 mm
Bedroom 2:
 4250 mm x 2850 mm
Balcony:
 17.1 SqM / 184.0 SqFt

18
09.01

2 BEDROOM
Internal Area:
 73.6 SqM / 792.2 SqFt
Living Area:
 8360 mm x 3685 mm
Bedroom 1:
 5175 mm x 2790 mm
Bedroom 2:
 4020 mm x 2975 mm
Balcony:
 40.1 SqM / 431.6 SqFt



River View

18
09.05

3 BEDROOM
Internal Area:
 98.7 SqM / 1062.3 SqFt
Living Area:
 8360 mm x 3820 mm
Bedroom 1:
 5330 mm x 2780 mm
Bedroom 2:
 4175 mm x 2905 mm
Bedroom 3:
 4175 mm x 2840 mm
Balcony:
 52.1 SqM / 560.7 SqFt

18
09.04

1 BEDROOM
Internal Area:
 52.1 SqM / 560.8 SqFt
Living Area:
 7640 mm x 3560 mm
Bedroom 1:
 3800 mm x 3210 mm
Balcony:
 12.9 SqM / 138.8 SqFt

18
09.03

1 BEDROOM
Internal Area:
 52.1 SqM / 560.8 SqFt
Living Area:
 7640 mm x 3560 mm
Bedroom 1:
 3800 mm x 3210 mm
Balcony:
 10.7 SqM / 115.1 SqFt

18
09.02

2 BEDROOM
Internal Area:
 77.0 SqM / 828.8 SqFt
Living Area:
 8360 mm x 4005 mm
Bedroom 1:
 5310 mm x 2970 mm
Bedroom 2:
 4160 mm x 2895 mm
Balcony:
 30.7 SqM / 330.4 SqFt

MARCO POLO

FLOOR

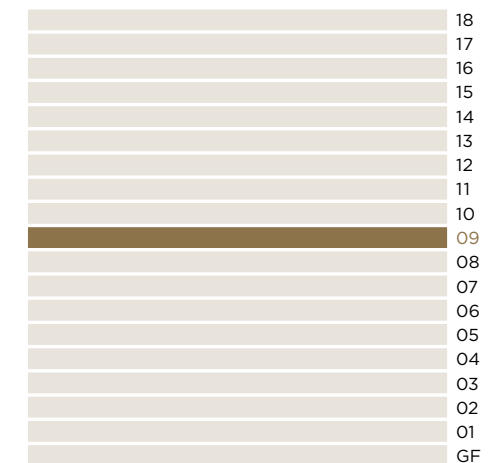
09

LEGEND

- C: Cupboard
- W: Wardrobe
- FF: Fridge Freezer
- WM: Washer / Dryer
- B: Balcony
- T: Terrace



LEVELS



NOTES



18
10.06

3 BEDROOM
Internal Area:
96.6 SqM / 1039.7 SqFt
Living Area:
8360 mm x 3720 mm
Bedroom 1:
5175 mm x 2780 mm
Bedroom 2:
4020 mm x 2905 mm
Bedroom 3:
4020 mm x 2840 mm
Balcony:
38.4 SqM / 413.3 SqFt

18
10.07

2 BEDROOM
Internal Area:
70.0 SqM / 753.1 SqFt
Living Area:
7640 mm x 3430 mm
Bedroom 1:
3510 mm x 2955 mm
Bedroom 2:
4250 mm x 2850 mm
Balcony:
17.1 SqM / 184.0 SqFt

18
10.01

2 BEDROOM
Internal Area:
73.6 SqM / 792.2 SqFt
Living Area:
8360 mm x 3685 mm
Bedroom 1:
5175 mm x 2790 mm
Bedroom 2:
4020 mm x 2975 mm
Balcony:
40.1 SqM / 431.6 SqFt



River View

18
10.05

3 BEDROOM
Internal Area:
98.7 SqM / 1062.3 SqFt
Living Area:
8360 mm x 3820 mm
Bedroom 1:
5330 mm x 2780 mm
Bedroom 2:
4175 mm x 2905 mm
Bedroom 3:
4175 mm x 2840 mm
Balcony:
52.1 SqM / 560.7 SqFt

18
10.04

1 BEDROOM
Internal Area:
52.1 SqM / 560.8 SqFt
Living Area:
7640 mm x 3560 mm
Bedroom 1:
3800 mm x 3210 mm
Balcony:
12.9 SqM / 138.8 SqFt

18
10.03

1 BEDROOM
Internal Area:
52.1 SqM / 560.8 SqFt
Living Area:
7640 mm x 3560 mm
Bedroom 1:
3800 mm x 3210 mm
Balcony:
10.7 SqM / 115.1 SqFt

18
10.02

2 BEDROOM
Internal Area:
77.0 SqM / 828.8 SqFt
Living Area:
8360 mm x 4005 mm
Bedroom 1:
5310 mm x 2970 mm
Bedroom 2:
4160 mm x 2895 mm
Balcony:
30.7 SqM / 330.1 SqFt

MARCO POLO

FLOOR

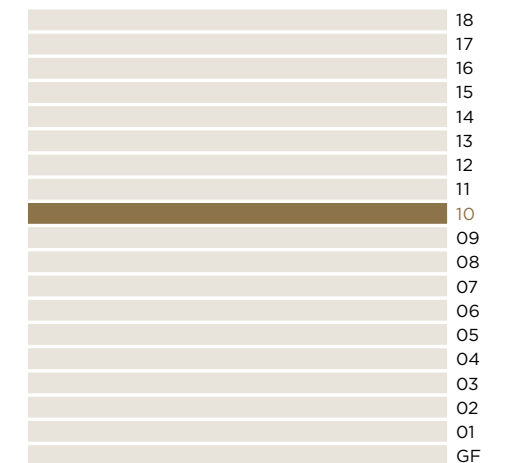
10

LEGEND

- C: Cupboard
- W: Wardrobe
- FF: Fridge Freezer
- WM: Washer / Dryer
- B: Balcony
- T: Terrace



LEVELS



NOTES



18
11.06

3 BEDROOM
Internal Area:
 96.6 SqM / 1039.7 SqFt
Living Area:
 8360 mm x 3720 mm
Bedroom 1:
 5175 mm x 2780 mm
Bedroom 2:
 4020 mm x 2905 mm
Bedroom 3:
 4020 mm x 2840 mm
Balcony:
 38.4 SqM / 413.3 SqFt

18
11.07

2 BEDROOM
Internal Area:
 70.0 SqM / 753.1 SqFt
Living Area:
 7640 mm x 3430 mm
Bedroom 1:
 3510 mm x 2955 mm
Bedroom 2:
 4250 mm x 2850 mm
Balcony:
 17.1 SqM / 184.0 SqFt

18
11.01

2 BEDROOM
Internal Area:
 73.6 SqM / 792.2 SqFt
Living Area:
 8360 mm x 3685 mm
Bedroom 1:
 5175 mm x 2790 mm
Bedroom 2:
 4020 mm x 2975 mm
Balcony:
 40.1 SqM / 431.6 SqFt



River View

18
11.05

3 BEDROOM
Internal Area:
 98.7 SqM / 1062.3 SqFt
Living Area:
 8360 mm x 3820 mm
Bedroom 1:
 5330 mm x 2780 mm
Bedroom 2:
 4175 mm x 2905 mm
Bedroom 3:
 4175 mm x 2840 mm
Balcony:
 52.1 SqM / 560.7 SqFt

18
11.04

1 BEDROOM
Internal Area:
 52.1 SqM / 560.8 SqFt
Living Area:
 7640 mm x 3560 mm
Bedroom 1:
 3800 mm x 3210 mm
Balcony:
 12.9 SqM / 138.8 SqFt

18
11.03

1 BEDROOM
Internal Area:
 52.1 SqM / 560.8 SqFt
Living Area:
 7640 mm x 3560 mm
Bedroom 1:
 3800 mm x 3210 mm
Balcony:
 10.7 SqM / 115.1 SqFt

18
11.02

2 BEDROOM
Internal Area:
 77.0 SqM / 828.8 SqFt
Living Area:
 8360 mm x 4005 mm
Bedroom 1:
 5310 mm x 2970 mm
Bedroom 2:
 4160 mm x 2895 mm
Balcony:
 30.7 SqM / 330.4 SqFt

MARCO POLO

FLOOR

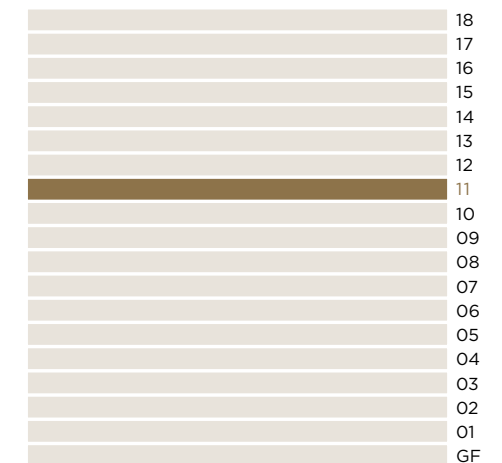
11

LEGEND

- C: Cupboard
- W: Wardrobe
- FF: Fridge Freezer
- WM: Washer / Dryer
- B: Balcony
- T: Terrace



LEVELS



NOTES



18
12.06

3 BEDROOM
Internal Area:
 96.6 SqM / 1039.7 SqFt
Living Area:
 8360 mm x 3720 mm
Bedroom 1:
 5175 mm x 2780 mm
Bedroom 2:
 4020 mm x 2905 mm
Bedroom 3:
 4020 mm x 2840 mm
Balcony:
 38.4 SqM / 413.3 SqFt

18
12.07

2 BEDROOM
Internal Area:
 70.0 SqM / 753.1 SqFt
Living Area:
 7640 mm x 3430 mm
Bedroom 1:
 3510 mm x 2955 mm
Bedroom 2:
 4250 mm x 2850 mm
Balcony:
 17.1 SqM / 184.0 SqFt

18
12.01

2 BEDROOM
Internal Area:
 73.6 SqM / 792.2 SqFt
Living Area:
 8360 mm x 3685 mm
Bedroom 1:
 5175 mm x 2790 mm
Bedroom 2:
 4020 mm x 2975 mm
Balcony:
 40.1 SqM / 431.6 SqFt



River View

18
12.05

3 BEDROOM
Internal Area:
 98.7 SqM / 1062.3 SqFt
Living Area:
 8360 mm x 3820 mm
Bedroom 1:
 5330 mm x 2780 mm
Bedroom 2:
 4175 mm x 2905 mm
Bedroom 3:
 4175 mm x 2840 mm
Balcony:
 52.1 SqM / 560.7 SqFt

18
12.04

1 BEDROOM
Internal Area:
 52.1 SqM / 560.8 SqFt
Living Area:
 7640 mm x 3560 mm
Bedroom 1:
 3800 mm x 3210 mm
Balcony:
 12.9 SqM / 138.8 SqFt

18
12.03

1 BEDROOM
Internal Area:
 52.1 SqM / 560.8 SqFt
Living Area:
 7640 mm x 3560 mm
Bedroom 1:
 3800 mm x 3210 mm
Balcony:
 10.7 SqM / 115.1 SqFt

18
12.02

2 BEDROOM
Internal Area:
 77.0 SqM / 828.8 SqFt
Living Area:
 8360 mm x 4005 mm
Bedroom 1:
 5310 mm x 2970 mm
Bedroom 2:
 4160 mm x 2895 mm
Balcony:
 30.7 SqM / 330.4 SqFt

MARCO POLO

FLOOR

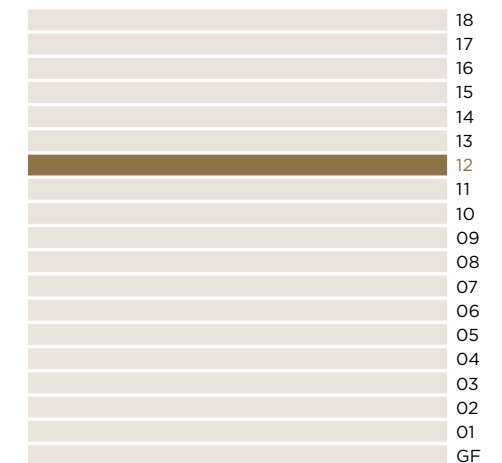
12

LEGEND

- C: Cupboard
- W: Wardrobe
- FF: Fridge Freezer
- WM: Washer / Dryer
- B: Balcony
- T: Terrace



LEVELS



NOTES



18
13.06

3 BEDROOM
Internal Area:
 96.6 SqM / 1039.7 SqFt
Living Area:
 8360 mm x 3720 mm
Bedroom 1:
 5175 mm x 2780 mm
Bedroom 2:
 4020 mm x 2905 mm
Bedroom 3:
 4020 mm x 2840 mm
Balcony:
 38.4 SqM / 413.3 SqFt

18
13.07

2 BEDROOM
Internal Area:
 70.0 SqM / 753.1 SqFt
Living Area:
 7640 mm x 3430 mm
Bedroom 1:
 3510 mm x 2955 mm
Bedroom 2:
 4250 mm x 2850 mm
Balcony:
 17.1 SqM / 184.0 SqFt

18
13.01

2 BEDROOM
Internal Area:
 73.6 SqM / 792.2 SqFt
Living Area:
 8360 mm x 3685 mm
Bedroom 1:
 5175 mm x 2790 mm
Bedroom 2:
 4020 mm x 2975 mm
Balcony:
 40.1 SqM / 431.6 SqFt



River View

18
13.05

3 BEDROOM
Internal Area:
 98.7 SqM / 1062.3 SqFt
Living Area:
 8360 mm x 3820 mm
Bedroom 1:
 5330 mm x 2780 mm
Bedroom 2:
 4175 mm x 2905 mm
Bedroom 3:
 4175 mm x 2840 mm
Balcony:
 52.1 SqM / 560.7 SqFt

18
13.04

1 BEDROOM
Internal Area:
 52.1 SqM / 560.8 SqFt
Living Area:
 7640 mm x 3560 mm
Bedroom 1:
 3800 mm x 3210 mm
Balcony:
 12.9 SqM / 138.8 SqFt

18
13.03

1 BEDROOM
Internal Area:
 52.1 SqM / 560.8 SqFt
Living Area:
 7640 mm x 3560 mm
Bedroom 1:
 3800 mm x 3210 mm
Balcony:
 10.7 SqM / 115.1 SqFt

18
13.02

2 BEDROOM
Internal Area:
 77.0 SqM / 828.8 SqFt
Living Area:
 8360 mm x 4005 mm
Bedroom 1:
 5310 mm x 2970 mm
Bedroom 2:
 4160 mm x 2895 mm
Balcony:
 30.7 SqM / 330.4 SqFt

MARCO POLO

FLOOR

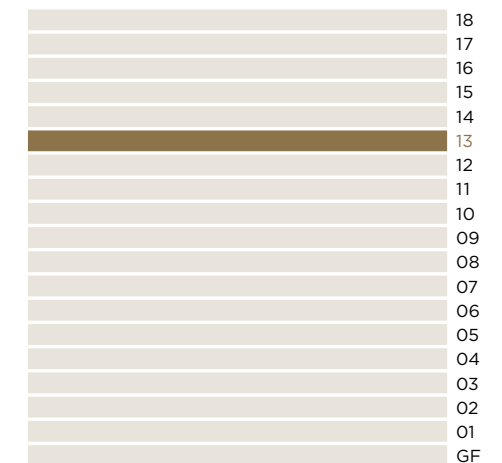
13

LEGEND

- C: Cupboard
- W: Wardrobe
- FF: Fridge Freezer
- WM: Washer / Dryer
- B: Balcony
- T: Terrace



LEVELS



NOTES



18
14.06

3 BEDROOM
Internal Area: 96.6 SqM / 1039.7 SqFt
Living Area: 8360 mm x 3720 mm
Bedroom 1: 5175 mm x 2780 mm
Bedroom 2: 4020 mm x 2905 mm
Bedroom 3: 4020 mm x 2840 mm
Balcony: 51.7 SqM / 556.4 SqFt

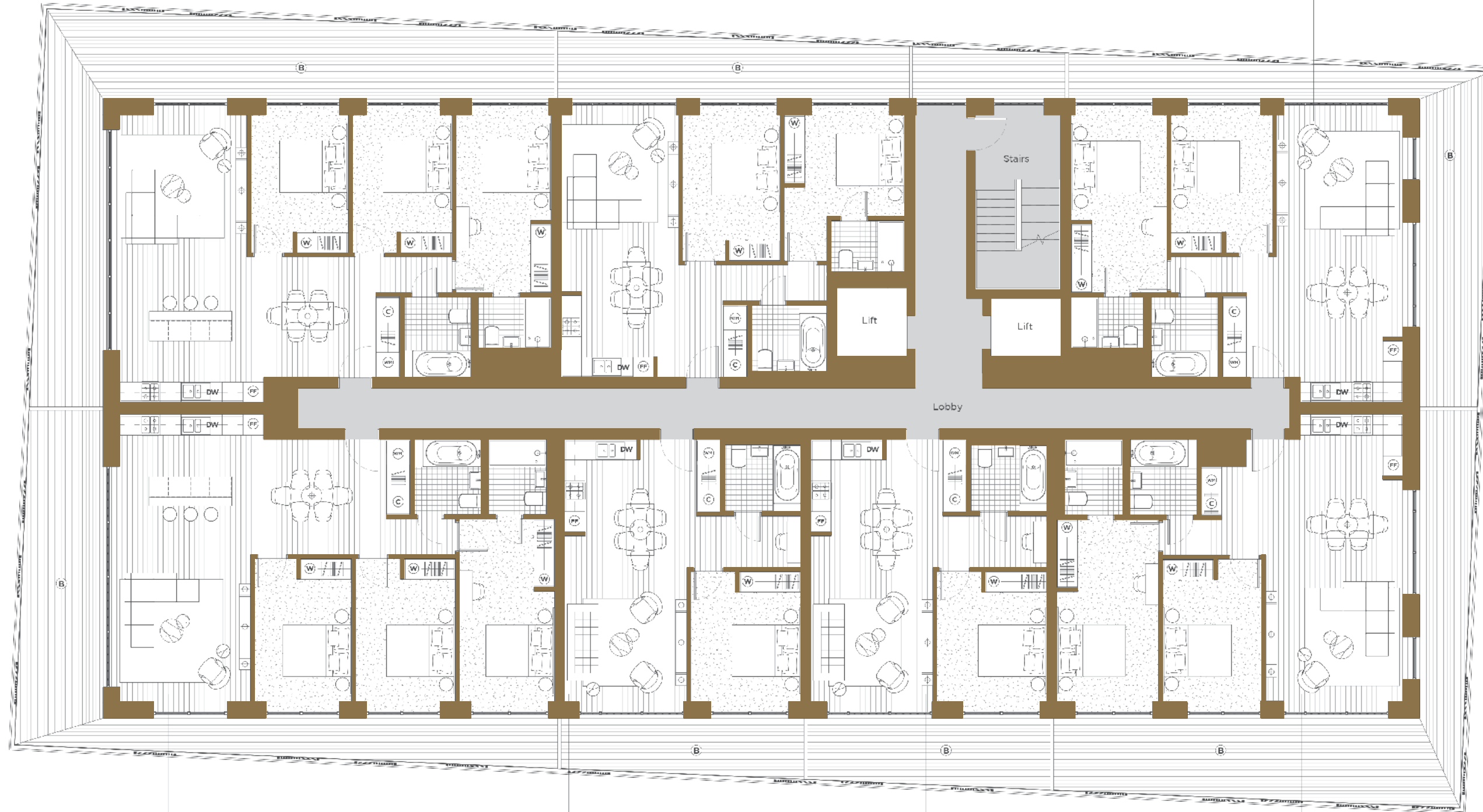
18
14.07

2 BEDROOM
Internal Area: 70.0 SqM / 753.1 SqFt
Living Area: 7640 mm x 3430 mm
Bedroom 1: 3510 mm x 2955 mm
Bedroom 2: 4250 mm x 2850 mm
Balcony: 17.9 SqM / 192.6 SqFt

18
14.01

2 BEDROOM
Internal Area: 73.6 SqM / 792.2 SqFt
Living Area: 8360 mm x 3685 mm
Bedroom 1: 5175 mm x 2790 mm
Bedroom 2: 4020 mm x 2975 mm
Balcony: 30.0 SqM / 322.9 SqFt

River View



18
14.05

3 BEDROOM
Internal Area: 98.7 SqM / 1062.3 SqFt
Living Area: 8360 mm x 3820 mm
Bedroom 1: 5330 mm x 2780 mm
Bedroom 2: 4175 mm x 2905 mm
Bedroom 3: 4175 mm x 2840 mm
Balcony: 38.7 SqM / 416.5 SqFt

18
14.04

1 BEDROOM
Internal Area: 52.1 SqM / 560.8 SqFt
Living Area: 7640 mm x 3560 mm
Bedroom 1: 3800 mm x 3210 mm
Balcony: 11.4 SqM / 122.7 SqFt

18
14.03

1 BEDROOM
Internal Area: 52.1 SqM / 560.8 SqFt
Living Area: 7640 mm x 3560 mm
Bedroom 1: 3800 mm x 3210 mm
Balcony: 13.6 SqM / 146.3 SqFt

18
14.02

2 BEDROOM
Internal Area: 77.0 SqM / 828.8 SqFt
Living Area: 8360 mm x 4005 mm
Bedroom 1: 5310 mm x 2970 mm
Bedroom 2: 4160 mm x 2895 mm
Balcony: 41.2 SqM / 443.4 SqFt

MARCO POLO

FLOOR

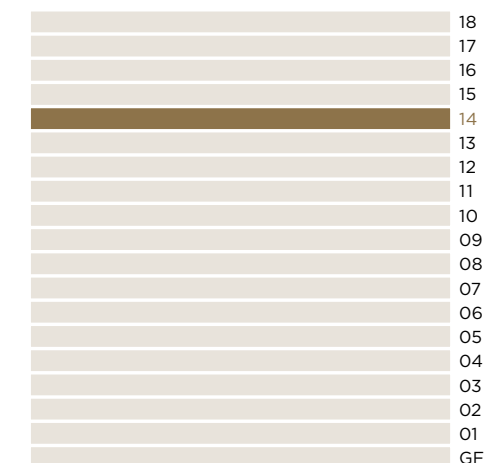
14

LEGEND

- C: Cupboard
- W: Wardrobe
- FF: Fridge Freezer
- WM: Washer / Dryer
- B: Balcony
- T: Terrace



LEVELS



NOTES



18
15.06

3 BEDROOM
Internal Area:
 96.6 SqM / 1039.7 SqFt
Living Area:
 8360 mm x 3720 mm
Bedroom 1:
 5175 mm x 2780 mm
Bedroom 2:
 4020 mm x 2905 mm
Bedroom 3:
 4020 mm x 2840 mm
Balcony:
 51.7 SqM / 556.4 SqFt

18
15.07

2 BEDROOM
Internal Area:
 70.0 SqM / 753.4 SqFt
Living Area:
 7640 mm x 3430 mm
Bedroom 1:
 3510 mm x 2955 mm
Bedroom 2:
 4250 mm x 2850 mm
Balcony:
 17.9 SqM / 192.6 SqFt

18
15.01

2 BEDROOM
Internal Area:
 73.6 SqM / 792.2 SqFt
Living Area:
 8360 mm x 3685 mm
Bedroom 1:
 5175 mm x 2790 mm
Bedroom 2:
 4020 mm x 2975 mm
Balcony:
 30.0 SqM / 322.9 SqFt



River View

18
15.05

3 BEDROOM
Internal Area:
 98.7 SqM / 1062.3 SqFt
Living Area:
 8360 mm x 3820 mm
Bedroom 1:
 5330 mm x 2780 mm
Bedroom 2:
 4175 mm x 2905 mm
Bedroom 3:
 4175 mm x 2810 mm
Balcony:
 38.7 SqM / 416.5 SqFt

18
15.04

1 BEDROOM
Internal Area:
 52.1 SqM / 560.8 SqFt
Living Area:
 7640 mm x 3560 mm
Bedroom 1:
 3800 mm x 3210 mm
Balcony:
 11.4 SqM / 122.7 SqFt

18
15.03

1 BEDROOM
Internal Area:
 52.1 SqM / 560.8 SqFt
Living Area:
 7640 mm x 3560 mm
Bedroom 1:
 3800 mm x 3210 mm
Balcony:
 13.6 SqM / 146.3 SqFt

18
15.02

2 BEDROOM
Internal Area:
 77.0 SqM / 828.8 SqFt
Living Area:
 8360 mm x 4005 mm
Bedroom 1:
 5310 mm x 2970 mm
Bedroom 2:
 4160 mm x 2895 mm
Balcony:
 41.2 SqM / 443.4 SqFt

MARCO POLO

FLOOR

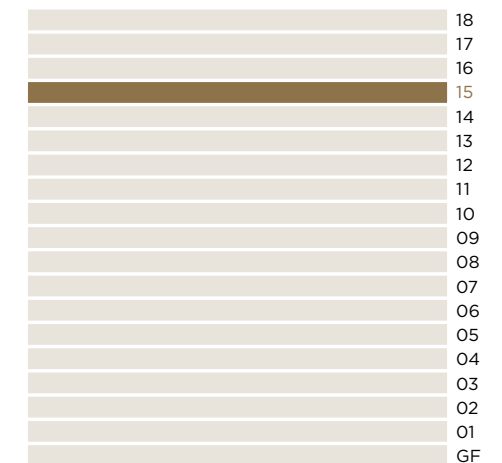
15

LEGEND

- C: Cupboard
- W: Wardrobe
- FF: Fridge Freezer
- WM: Washer / Dryer
- B: Balcony
- T: Terrace



LEVELS



NOTES



18
16.06

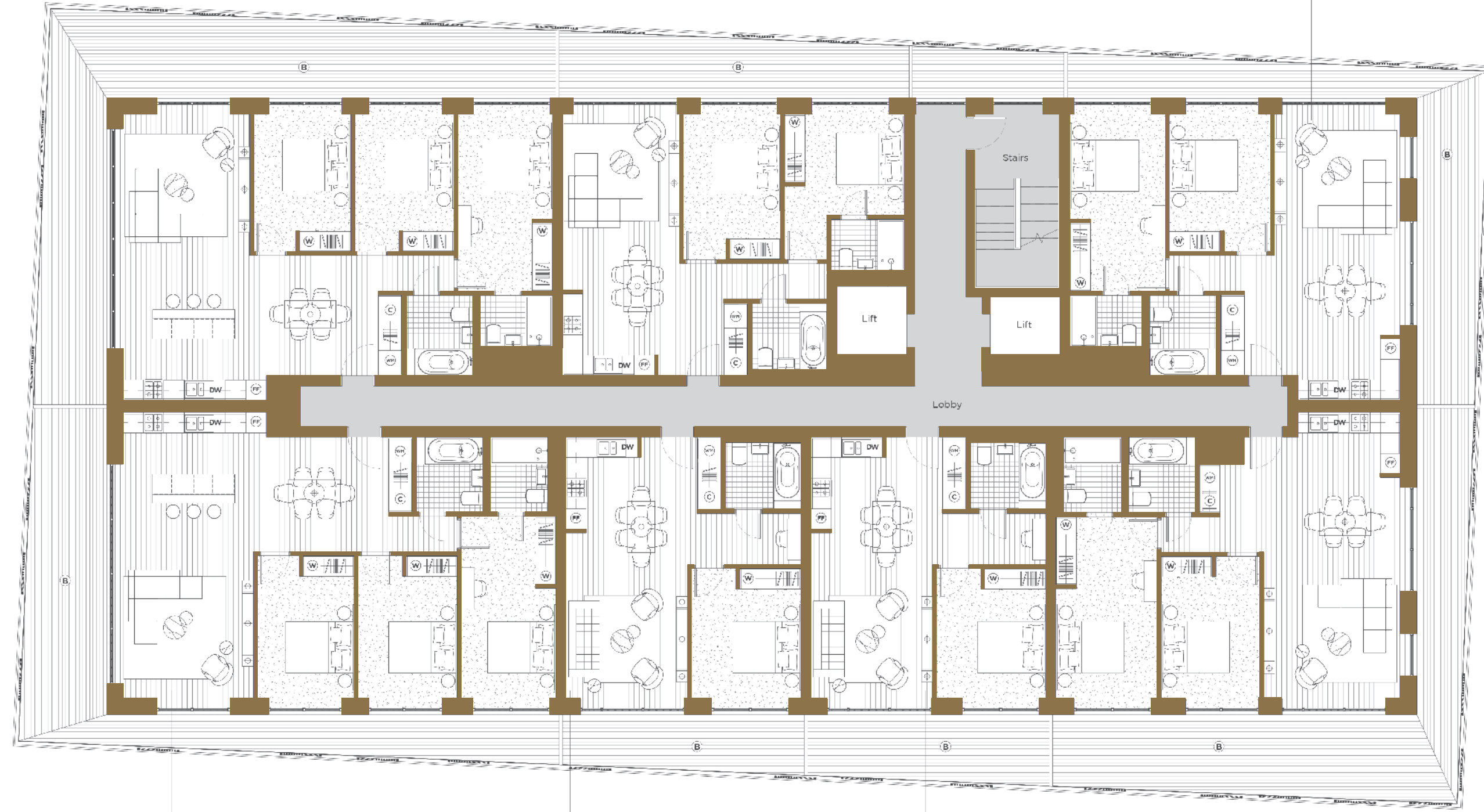
3 BEDROOM
Internal Area:
 96.6 SqM / 1039.7 SqFt
Living Area:
 8360 mm x 3720 mm
Bedroom 1:
 5175 mm x 2780 mm
Bedroom 2:
 4020 mm x 2905 mm
Bedroom 3:
 4020 mm x 2840 mm
Balcony:
 51.7 SqM / 556.4 SqFt

18
16.07

2 BEDROOM
Internal Area:
 70.0 SqM / 753.4 SqFt
Living Area:
 7640 mm x 3430 mm
Bedroom 1:
 3510 mm x 2955 mm
Bedroom 2:
 4250 mm x 2850 mm
Balcony:
 17.9 SqM / 192.6 SqFt

18
16.01

2 BEDROOM
Internal Area:
 73.6 SqM / 792.2 SqFt
Living Area:
 8360 mm x 3685 mm
Bedroom 1:
 5175 mm x 2790 mm
Bedroom 2:
 4020 mm x 2975 mm
Balcony:
 30.0 SqM / 322.9 SqFt



River View

18
16.05

3 BEDROOM
Internal Area:
 98.7 SqM / 1062.3 SqFt
Living Area:
 8360 mm x 3820 mm
Bedroom 1:
 5330 mm x 2780 mm
Bedroom 2:
 4175 mm x 2905 mm
Bedroom 3:
 4175 mm x 2840 mm
Balcony:
 38.7 SqM / 416.5 SqFt

18
16.04

1 BEDROOM
Internal Area:
 52.1 SqM / 560.8 SqFt
Living Area:
 7640 mm x 3560 mm
Bedroom 1:
 3800 mm x 3210 mm
Balcony:
 11.4 SqM / 122.7 SqFt

18
16.03

1 BEDROOM
Internal Area:
 52.1 SqM / 560.8 SqFt
Living Area:
 7640 mm x 3560 mm
Bedroom 1:
 3800 mm x 3210 mm
Balcony:
 13.6 SqM / 146.3 SqFt

18
16.02

2 BEDROOM
Internal Area:
 77.0 SqM / 828.8 SqFt
Living Area:
 8360 mm x 4005 mm
Bedroom 1:
 5310 mm x 2970 mm
Bedroom 2:
 4160 mm x 2895 mm
Balcony:
 41.2 SqM / 443.4 SqFt

MARCO POLO

FLOOR

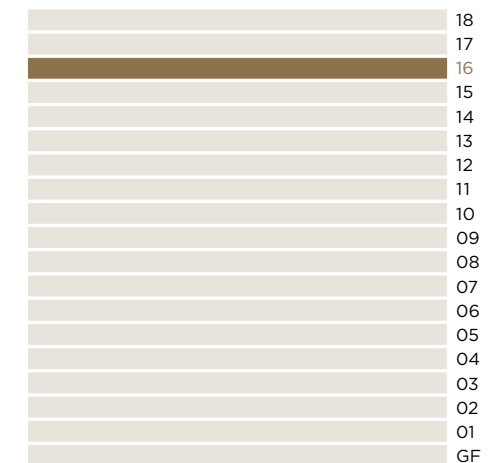
16

LEGEND

- C: Cupboard
- W: Wardrobe
- FF: Fridge Freezer
- WM: Washer / Dryer
- B: Balcony
- T: Terrace



LEVELS



NOTES



18
17.06

3 BEDROOM

Internal Area:
96.6 SqM / 1039.7 SqFt
Living Area:
8360 mm x 3720 mm
Bedroom 1:
5175 mm x 2780 mm
Bedroom 2:
4020 mm x 2905 mm
Bedroom 3:
4020 mm x 2840 mm
Balcony:
51.7 SqM / 556.4 SqFt

18
17.07

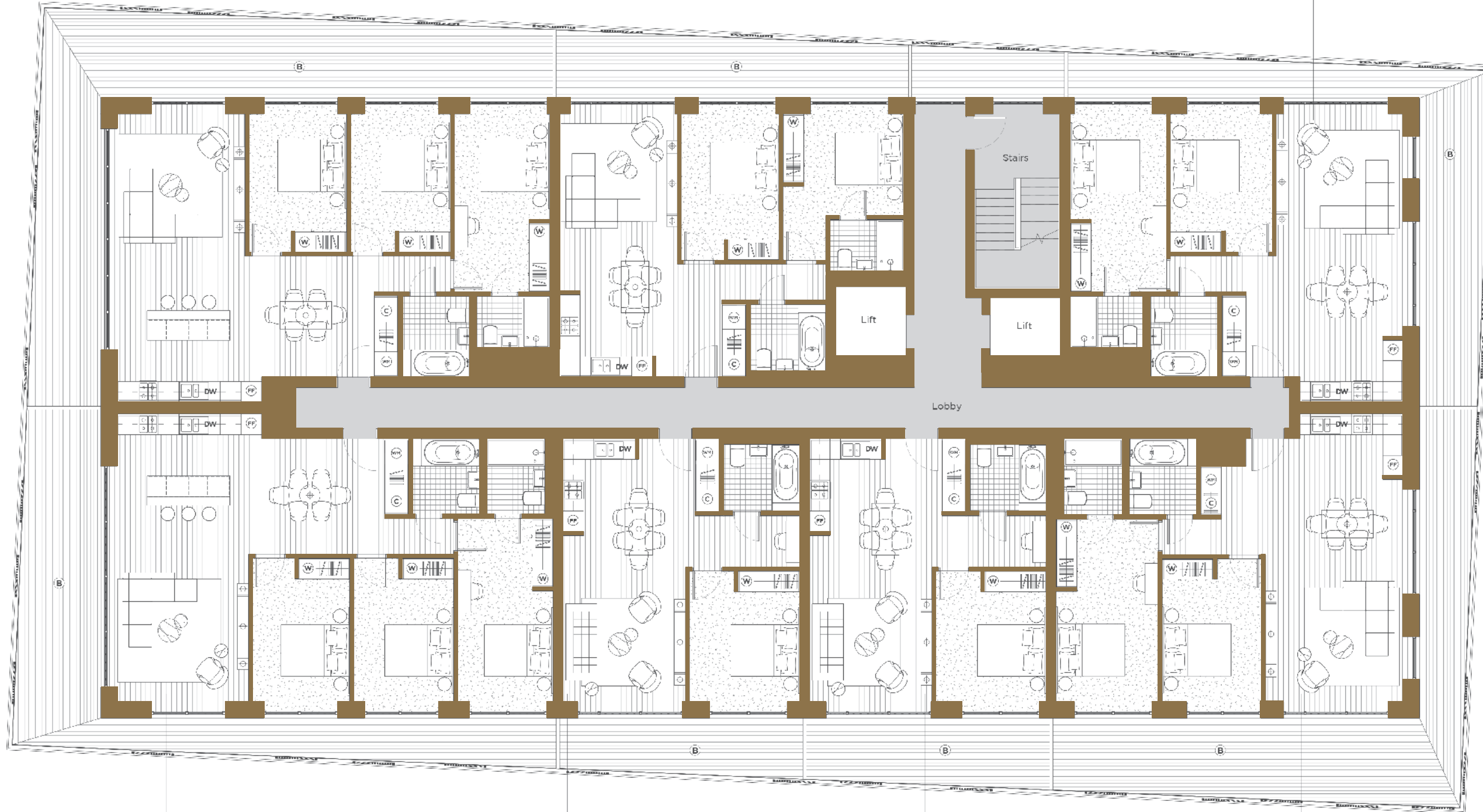
2 BEDROOM

Internal Area:
70.0 SqM / 753.1 SqFt
Living Area:
7640 mm x 3430 mm
Bedroom 1:
3510 mm x 2955 mm
Bedroom 2:
4250 mm x 2850 mm
Balcony:
17.9 SqM / 192.6 SqFt

18
17.01

2 BEDROOM

Internal Area:
73.6 SqM / 792.2 SqFt
Living Area:
8360 mm x 3685 mm
Bedroom 1:
5175 mm x 2790 mm
Bedroom 2:
4020 mm x 2975 mm
Balcony:
30.0 SqM / 322.9 SqFt



River View

18
17.05

3 BEDROOM

Internal Area:
98.7 SqM / 1062.3 SqFt
Living Area:
8360 mm x 3820 mm
Bedroom 1:
5330 mm x 2780 mm
Bedroom 2:
4175 mm x 2905 mm
Bedroom 3:
4175 mm x 2840 mm
Balcony:
38.7 SqM / 416.5 SqFt

18
17.04

1 BEDROOM

Internal Area:
52.1 SqM / 560.8 SqFt
Living Area:
7640 mm x 3560 mm
Bedroom 1:
3800 mm x 3210 mm
Balcony:
11.4 SqM / 122.7 SqFt

18
17.03

1 BEDROOM

Internal Area:
52.1 SqM / 560.8 SqFt
Living Area:
7640 mm x 3560 mm
Bedroom 1:
3800 mm x 3210 mm
Balcony:
13.6 SqM / 146.3 SqFt

18
17.02

2 BEDROOM

Internal Area:
77.0 SqM / 828.8 SqFt
Living Area:
8360 mm x 4005 mm
Bedroom 1:
5310 mm x 2970 mm
Bedroom 2:
4160 mm x 2895 mm
Balcony:
41.2 SqM / 443.4 SqFt

MARCO POLO

FLOOR

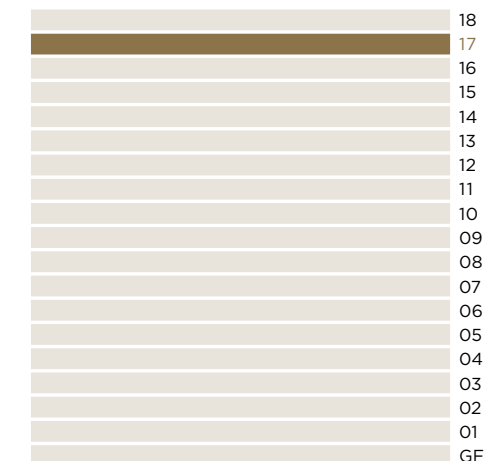
17

LEGEND

- C: Cupboard
- W: Wardrobe
- FF: Fridge Freezer
- WM: Washer / Dryer
- B: Balcony
- T: Terrace



LEVELS



NOTES



18
18.06

3 BEDROOM
Internal Area:
 96.6 SqM / 1039.7 SqFt
Living Area:
 8360 mm x 3720 mm
Bedroom 1:
 5175 mm x 2780 mm
Bedroom 2:
 4020 mm x 2905 mm
Bedroom 3:
 4020 mm x 2840 mm
Balcony:
 51.7 SqM / 556.4 SqFt

18
18.07

2 BEDROOM
Internal Area:
 70.0 SqM / 753.1 SqFt
Living Area:
 7640 mm x 3430 mm
Bedroom 1:
 3510 mm x 2955 mm
Bedroom 2:
 4250 mm x 2850 mm
Balcony:
 17.9 SqM / 192.6 SqFt

18
18.01

2 BEDROOM
Internal Area:
 73.6 SqM / 792.2 SqFt
Living Area:
 8360 mm x 3685 mm
Bedroom 1:
 5175 mm x 2790 mm
Bedroom 2:
 4020 mm x 2975 mm
Balcony:
 30.0 SqM / 322.9 SqFt



River View

18
18.05

3 BEDROOM
Internal Area:
 98.7 SqM / 1062.3 SqFt
Living Area:
 8360 mm x 3820 mm
Bedroom 1:
 5330 mm x 2780 mm
Bedroom 2:
 4175 mm x 2905 mm
Bedroom 3:
 4175 mm x 2840 mm
Balcony:
 38.7 SqM / 416.5 SqFt

18
18.04

1 BEDROOM
Internal Area:
 52.1 SqM / 560.8 SqFt
Living Area:
 7640 mm x 3560 mm
Bedroom 1:
 3800 mm x 3210 mm
Balcony:
 11.4 SqM / 122.7 SqFt

18
18.03

1 BEDROOM
Internal Area:
 52.1 SqM / 560.8 SqFt
Living Area:
 7640 mm x 3560 mm
Bedroom 1:
 3800 mm x 3210 mm
Balcony:
 13.6 SqM / 146.3 SqFt

18
18.02

2 BEDROOM
Internal Area:
 77.0 SqM / 828.8 SqFt
Living Area:
 8360 mm x 4005 mm
Bedroom 1:
 5310 mm x 2970 mm
Bedroom 2:
 4160 mm x 2895 mm
Balcony:
 41.2 SqM / 443.4 SqFt

MARCO POLO

FLOOR

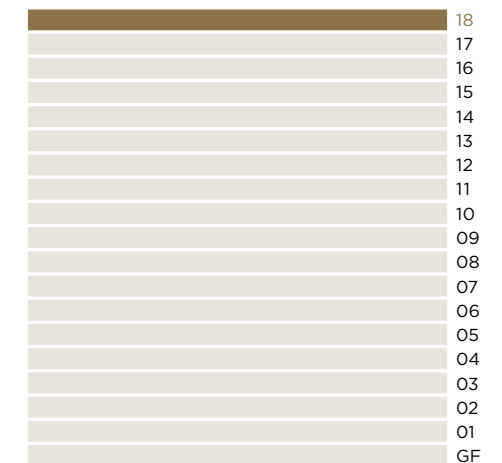
18

LEGEND

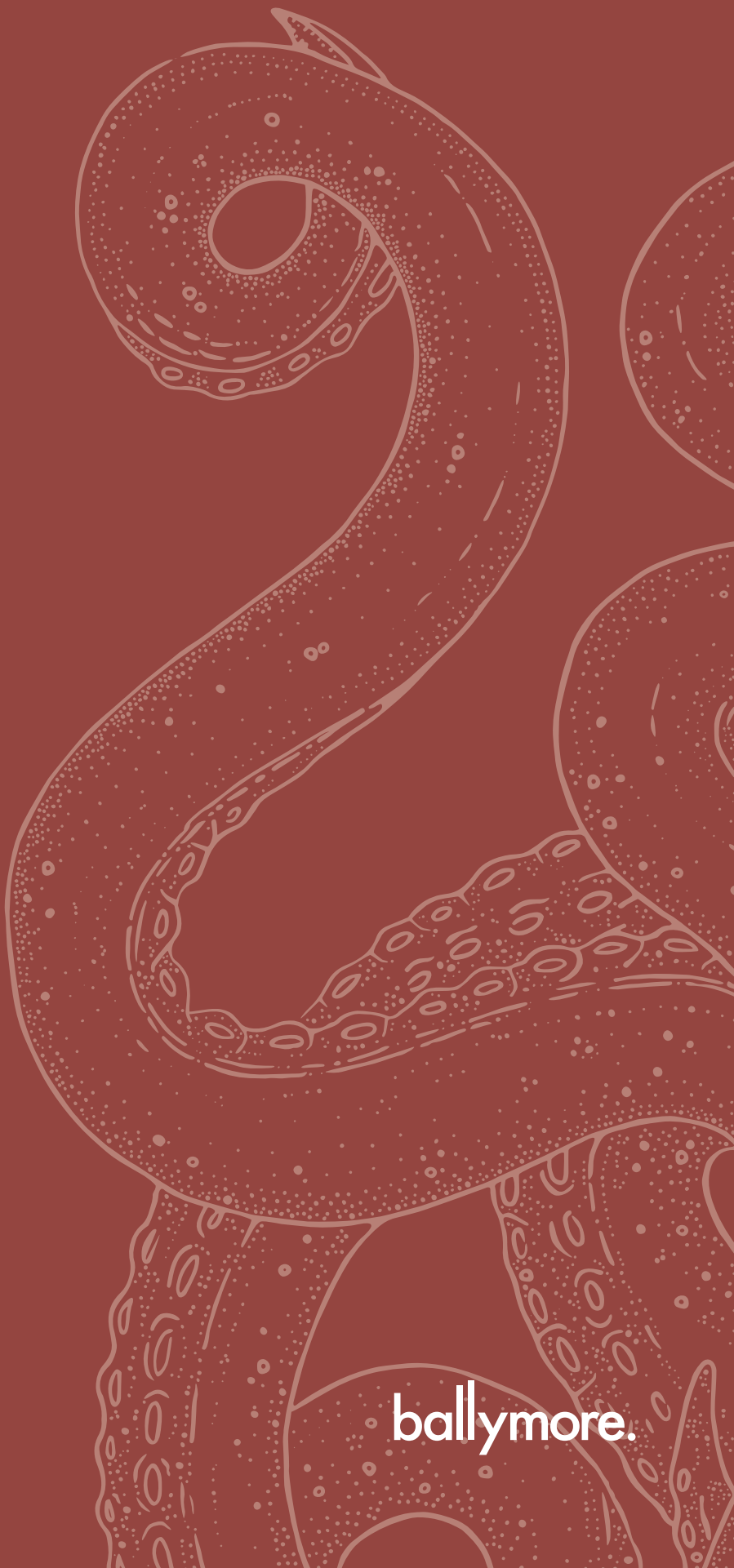
- C: Cupboard
- W: Wardrobe
- FF: Fridge Freezer
- WM: Washer / Dryer
- B: Balcony
- T: Terrace



LEVELS



NOTES



Oxley

ballymore.