

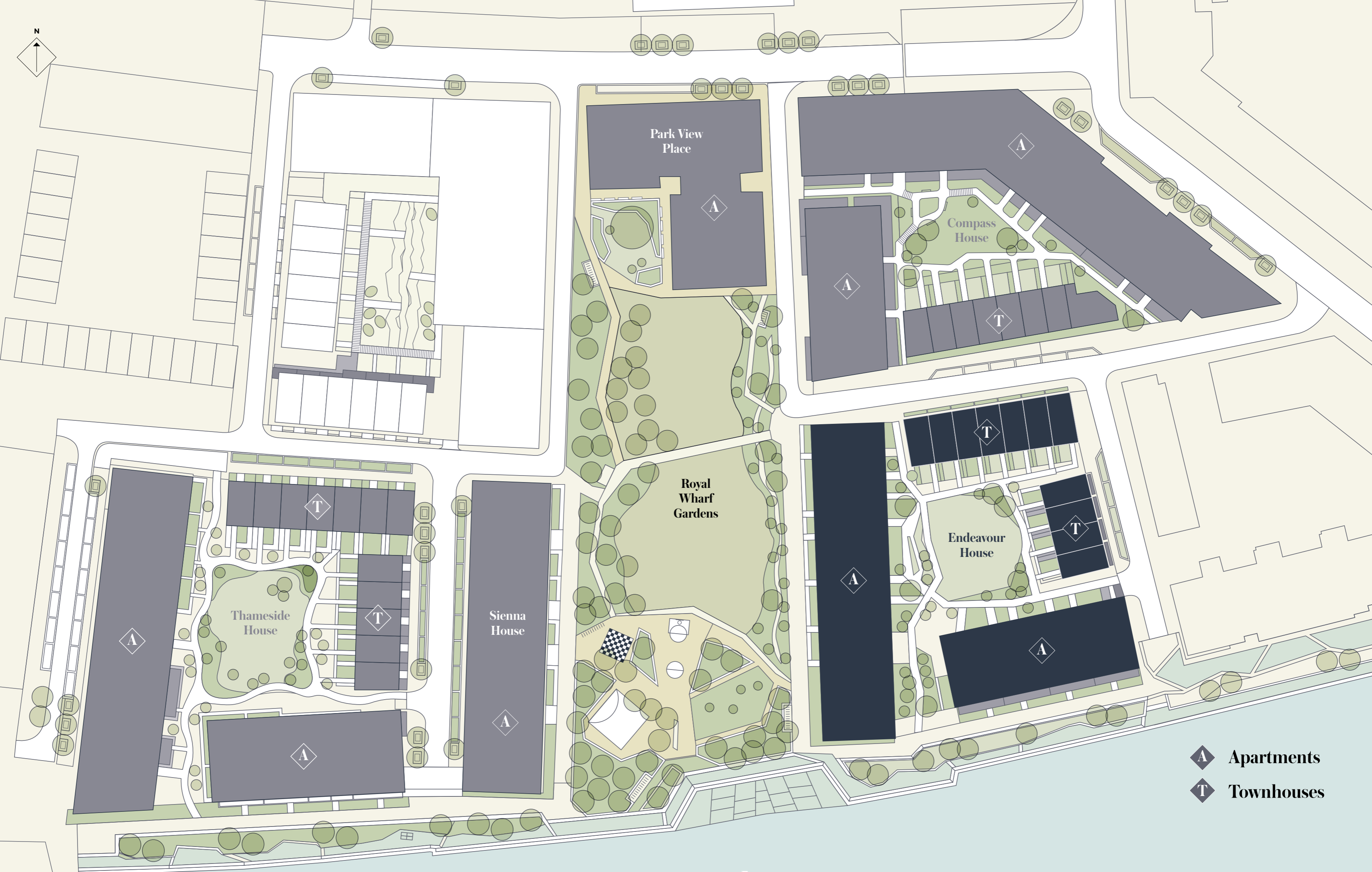
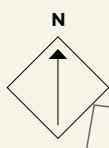
# Endeavour House

---



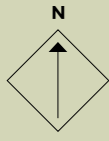
ROYAL WHARF

LONDON



River Thames

- A** Apartments
- T** Townhouses



Royal Wharf Gardens

CORE A

Endeavour House

CORE B

CORE C



ROYAL WHARF  
LONDON

Endeavour House



**Disclaimer**

This brochure and the information contained in it does not form part of any contract, and while reasonable effort has been made to ensure accuracy, this cannot be guaranteed and no representation or warranty is made in that regard. Apartment designs and layouts are indicative only and may change. The specification of the apartments is the anticipated specification as at the date this brochure was prepared, but may be subject to change in accordance with permitted variances under the apartment sale contracts. Dimensions shown in any text or plan are approximate sizes only and actual sizes may be different once constructed (although it is not anticipated that any apartments will be reduced by more than 5% in size). Computer generated images and photos are indicative only. All sales remain subject to contract. All information regarding prospective commercial or retail tenants represents current intention only, and the final identity of the tenants may change. Furniture shown in Computer Generated Images and photos is not included in sales. Royal Wharf is a marketing name only and will not necessarily form part of the approved postal address. Neither the agents nor any person in their employ has any authority to make or give any representation or warranty or guarantee (whether written or oral) in respect of or in relation to the development (or any parts thereof). © 2014 Royal Wharf

[www.royalwharf.com](http://www.royalwharf.com)



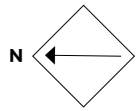
ROYAL WHARF

LONDON

Endeavour House

CORE A





**ROYAL WHARF**  
LONDON

**Endeavour House**

FLOOR CORE

**GF A**

**LEGEND**

- C: Cupboard
- W: Wardrobe
- FF: Fridge Freezer
- WM: Washer / Dryer
- B: Balcony
- T: Terrace

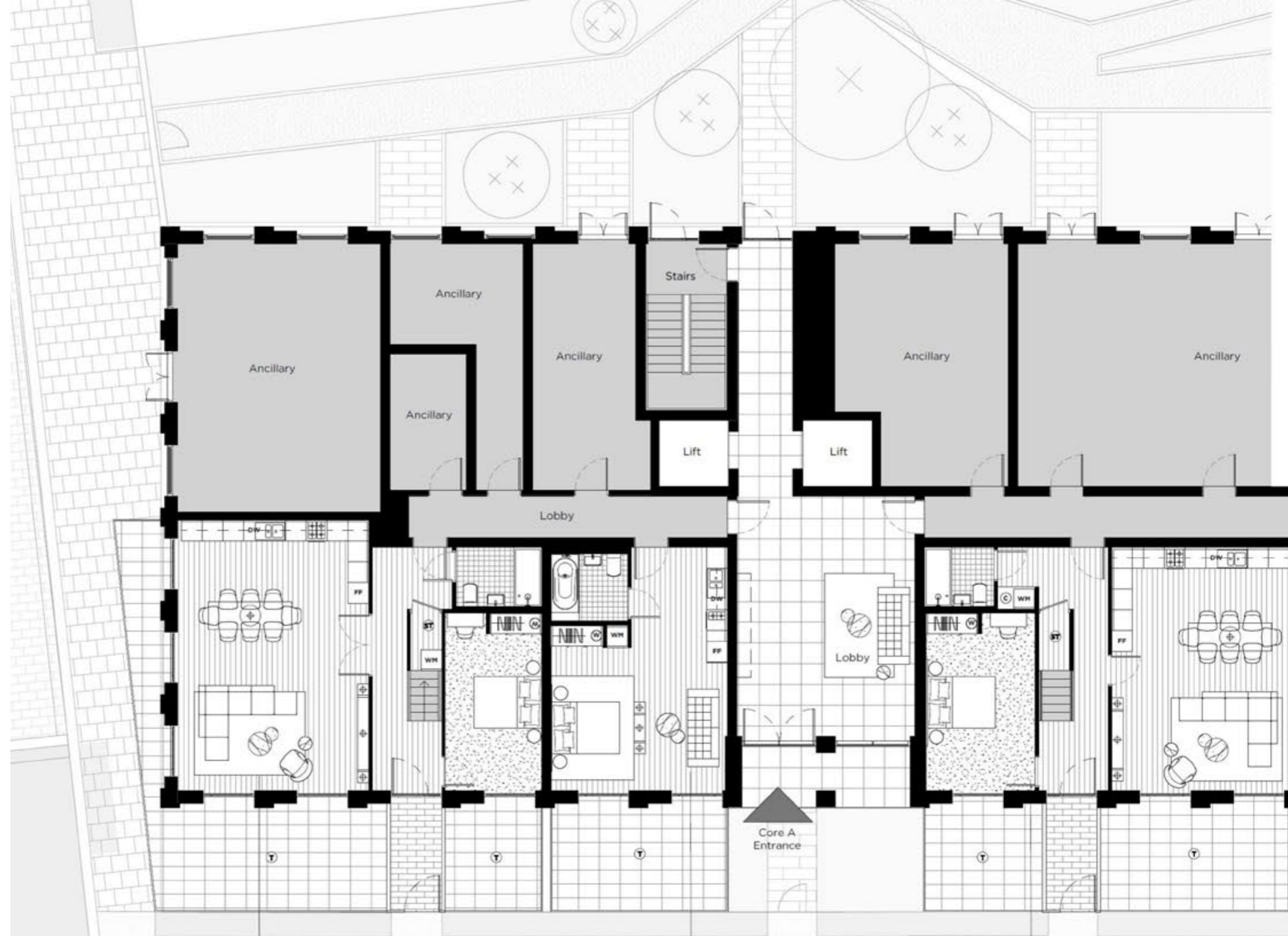
**NOTES**



**Disclaimer**

This brochure and the information contained in it does not form part of any contract, and while reasonable effort has been made to ensure accuracy, this cannot be guaranteed and no representation or warranty is made in that regard. Apartment designs and layouts are indicative only and may change. The specification of the apartments is the anticipated specification as at the date this brochure was prepared, but may be subject to change in accordance with permitted variances under the apartment sale contracts. Dimensions shown in any text or plan are approximate sizes only and actual sizes may be different once constructed (although it is not anticipated that any apartments will be reduced by more than 5% in size). Computer generated images and photos are indicative only. All sales remain subject to contract. All information regarding prospective commercial or retail tenants represents current intention only, and the final identity of the tenants may change. Furniture shown in Computer Generated Images and photos is not included in sales. Royal Wharf is a marketing name only and will not necessarily form part of the approved postal address. Neither the agents nor any person in their employ has any authority to make or give any representation warranty or guarantee (whether written or oral) in respect of or in relation to the development (or any parts thereof). © 2014 Royal Wharf

[www.royalwharf.com](http://www.royalwharf.com)



07
06
05
04
03
02
01
GF

**11A GF.01 4 BEDROOM DUPLEX L**

**Internal Area:**  
154.9 SqM / 1667 SqFt

**Living Area:**  
7805 mm x 5510 mm

**Bedroom 1:**  
7750 mm x 3340 mm

**Bedroom 2:**  
5220 mm x 2780 mm

**Bedroom 3:**  
5125 mm x 2780 mm

**Bedroom 4:**  
4170 mm x 3575 mm

**Terrace:**  
45.3 SqM / 488 SqFt

**11A GF.02 SUITE**

**Internal Area:**  
35.5 SqM / 382 SqFt

**Living Area:**  
7015 mm x 2760 mm

**Bedroom 1:**  
4770 mm x 2380 mm

**Terrace:**  
16.3 SqM / 175 SqFt

**11A GF.03 4 BEDROOM DUPLEX L**

**Internal Area:**  
146.0 SqM / 1572 SqFt

**Living Area:**  
7015 mm x 5120 mm

**Bedroom 1:**  
5225 mm x 4310 mm

**Bedroom 2:**  
5225 mm x 3225 mm

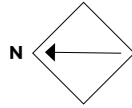
**Bedroom 3:**  
5125 mm x 3200 mm

**Bedroom 4:**  
3560 mm x 2780 mm

**Terrace:**  
33.8 SqM / 364 SqFt

**Park View**





**ROYAL WHARF**  
LONDON

**Endeavour House**

FLOOR CORE

**01 A**

**LEGEND**

- C: Cupboard
- W: Wardrobe
- FF: Fridge Freezer
- WM: Washer / Dryer
- B: Balcony
- T: Terrace

**NOTES**



**11A 01.04**  
**3 BEDROOM**  
Internal Area: 96.4 SqM / 1038 SqFt  
Living Area: 7615 mm x 7015 mm  
Bedroom 1: 4770 mm x 2715 mm  
Bedroom 2: 4000 mm x 3700 mm  
Bedroom 3: 3640 mm x 2595 mm  
Balcony: 10.4 SqM / 112 SqFt

**11A 01.01**  
**1 BEDROOM + S**  
Internal Area: 68.0 SqM / 732 SqFt  
Living Area: 7015 mm x 4870 mm  
Bedroom 1: 4565 mm x 2760 mm  
Study: 3360 mm x 2595 mm  
Balcony: 10.4 SqM / 112 SqFt

**11A 01.02**  
**SUITE**  
Internal Area: 43.5 SqM / 468 SqFt  
Living Area: 8490 mm x 2885 mm  
Bedroom 1: 4215 mm x 2395 mm

**11A GF.01**  
**4 BEDROOM DUPLEX U**  
Internal Area: 154.9 SqM / 1667 SqFt  
Living Area: 7805 mm x 5510 mm  
Bedroom 1: 7750 mm x 3340 mm  
Bedroom 2: 5220 mm x 2780 mm  
Bedroom 3: 5125 mm x 2780 mm  
Bedroom 4: 4170 mm x 3575 mm  
Terrace: 45.3 SqM / 488 SqFt

**11A 01.03**  
**SUITE**  
Internal Area: 35.5 SqM / 382 SqFt  
Living Area: 7015 mm x 2760 mm  
Bedroom 1: 4770 mm x 2380 mm

**11A GF.03**  
**4 BEDROOM DUPLEX U**  
Internal Area: 146.0 SqM / 1572 SqFt  
Living Area: 7015 mm x 5120 mm  
Bedroom 1: 5225 mm x 4310 mm  
Bedroom 2: 5225 mm x 3225 mm  
Bedroom 3: 5125 mm x 3200 mm  
Bedroom 4: 3560 mm x 2780 mm  
Terrace: 33.8 SqM / 364 SqFt

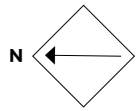


**Disclaimer**  
This brochure and the information contained in it does not form part of any contract, and while reasonable effort has been made to ensure accuracy, this cannot be guaranteed and no representation or warranty is made in that regard. Apartment designs and layouts are indicative only and may change. The specification of the apartments is the anticipated specification as at the date this brochure was prepared, but may be subject to change in accordance with permitted variances under the apartment sale contracts. Dimensions shown in any text or plan are approximate sizes only and actual sizes may be different once constructed (although it is not anticipated that any apartments will be reduced by more than 5% in size). Computer generated images and photos are indicative only. All sales remain subject to contract. All information regarding prospective commercial or retail tenants represents current intention only, and the final identity of the tenants may change. Furniture shown in Computer Generated Images and photos is not included in sales. Royal Wharf is a marketing name only and will not necessarily form part of the approved postal address. Neither the agents nor any person in their employ has any authority to make or give any representation warranty or guarantee (whether written or oral) in respect of or in relation to the development (or any parts thereof). © 2014 Royal Wharf

07
06
05
04
03
02
01
GF

Park View





**ROYAL WHARF**  
LONDON

**Endeavour House**

FLOOR CORE

**02 A**

**LEGEND**

- C: Cupboard
- W: Wardrobe
- FF: Fridge Freezer
- WM: Washer / Dryer
- B: Balcony
- T: Terrace

**NOTES**



Park View

	07
	06
	05
	04
	03
	02
	01
	GF

**11A 02.05** 3 BEDROOM  
**Internal Area:** 96.7 SqM / 1041 SqFt  
**Living Area:** 7615 mm x 7015 mm  
**Bedroom 1:** 4770 mm x 2715 mm  
**Bedroom 2:** 4000 mm x 3070 mm  
**Bedroom 3:** 3640 mm x 2595 mm  
**Balcony:** 10.4 SqM / 112 SqFt

**11A 02.04** 1 BEDROOM  
**Internal Area:** 54.6 SqM / 588 SqFt  
**Living Area:** 7015 mm x 4425 mm  
**Bedroom 1:** 4700 mm x 3290 mm  
**Balcony:** 10.4 SqM / 112 SqFt

**11A 02.03** 1 BEDROOM  
**Internal Area:** 55.4 SqM / 596 SqFt  
**Living Area:** 7015 mm x 4535 mm  
**Bedroom 1:** 4700 mm x 3290 mm  
**Balcony:** 5.2 SqM / 56 SqFt

**11A 02.06** 3 BEDROOM  
**Internal Area:** 96.4 SqM / 1038 SqFt  
**Living Area:** 7615 mm x 7015 mm  
**Bedroom 1:** 4770 mm x 2715 mm  
**Bedroom 2:** 4000 mm x 3700 mm  
**Bedroom 3:** 3640 mm x 2595 mm  
**Balcony:** 10.4 SqM / 112 SqFt

**11A 02.01** 1 BEDROOM  
**Internal Area:** 51.9 SqM / 559 SqFt  
**Living Area:** 7015 mm x 4925 mm  
**Bedroom 1:** 4770 mm x 2820 mm  
**Balcony:** 5.2 SqM / 56 SqFt

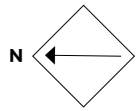
**11A 02.02** 2 BEDROOM + S  
**Internal Area:** 95.8 SqM / 1031 SqFt  
**Living Area:** 8490 mm x 5010 mm  
**Bedroom 1:** 4740 mm x 3835 mm  
**Bedroom 2:** 4030 mm x 2945 mm  
**Study:** 3235 mm x 2340 mm  
**Balcony:** 10.4 SqM / 112 SqFt



**Disclaimer**

This brochure and the information contained in it does not form part of any contract, and while reasonable effort has been made to ensure accuracy, this cannot be guaranteed and no representation or warranty is made in that regard. Apartment designs and layouts are indicative only and may change. The specification of the apartments is the anticipated specification as at the date this brochure was prepared, but may be subject to change in accordance with permitted variances under the apartment sale contracts. Dimensions shown in any text or plan are approximate sizes only and actual sizes may be different once constructed (although it is not anticipated that any apartments will be reduced by more than 5% in size). Computer generated images and photos are indicative only. All sales remain subject to contract. All information regarding prospective commercial or retail tenants represents current intention only, and the final identity of the tenants may change. Furniture shown in Computer Generated Images and photos is not included in sales. Royal Wharf is a marketing name only and will not necessarily form part of the approved postal address. Neither the agents nor any person in their employ has any authority to make or give any representation warranty or guarantee (whether written or oral) in respect of or in relation to the development (or any parts thereof). © 2014 Royal Wharf





**ROYAL WHARF**  
LONDON

**Endeavour House**

FLOOR CORE

**03 A**

**LEGEND**

- C: Cupboard
- W: Wardrobe
- FF: Fridge Freezer
- WM: Washer / Dryer
- B: Balcony
- T: Terrace

**NOTES**



**Disclaimer**

This brochure and the information contained in it does not form part of any contract, and while reasonable effort has been made to ensure accuracy, this cannot be guaranteed and no representation or warranty is made in that regard. Apartment designs and layouts are indicative only and may change. The specification of the apartments is the anticipated specification as at the date this brochure was prepared, but may be subject to change in accordance with permitted variances under the apartment sale contracts. Dimensions shown in any text or plan are approximate sizes only and actual sizes may be different once constructed (although it is not anticipated that any apartments will be reduced by more than 5% in size). Computer generated images and photos are indicative only. All sales remain subject to contract. All information regarding prospective commercial or retail tenants represents current intention only, and the final identity of the tenants may change. Furniture shown in Computer Generated Images and photos is not included in sales. Royal Wharf is a marketing name only and will not necessarily form part of the approved postal address. Neither the agents nor any person in their employ has any authority to make or give any representation warranty or guarantee (whether written or oral) in respect of or in relation to the development (or any parts thereof). © 2014 Royal Wharf

[www.royalwharf.com](http://www.royalwharf.com)

**11A 03.06**  
**3 BEDROOM**  
Internal Area:  
96.4 SqM / 1038 SqFt  
Living Area:  
7615 mm x 7015 mm  
Bedroom 1:  
4770 mm x 2715 mm  
Bedroom 2:  
4000 mm x 3700 mm  
Bedroom 3:  
3640 mm x 2595 mm  
Balcony:  
10.4 SqM / 112 SqFt

**11A 03.01**  
**1 BEDROOM**  
Internal Area:  
51.9 SqM / 559 SqFt  
Living Area:  
7015 mm x 4925 mm  
Bedroom 1:  
4770 mm x 2820 mm  
Balcony:  
5.2 SqM / 56 SqFt

**11A 03.02**  
**2 BEDROOM + S**  
Internal Area:  
95.8 SqM / 1031 SqFt  
Living Area:  
8490 mm x 5010 mm  
Bedroom 1:  
4740 mm x 3835 mm  
Bedroom 2:  
4030 mm x 2945 mm  
Study:  
3235 mm x 2340 mm  
Balcony:  
10.4 SqM / 112 SqFt



**11A 03.05**  
**3 BEDROOM**  
Internal Area:  
96.7 SqM / 1041 SqFt  
Living Area:  
7615 mm x 7015 mm  
Bedroom 1:  
4770 mm x 2715 mm  
Bedroom 2:  
4000 mm x 3070 mm  
Bedroom 3:  
3640 mm x 2595 mm  
Balcony:  
15.6 SqM / 168 SqFt

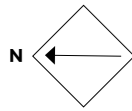
**11A 03.04**  
**1 BEDROOM**  
Internal Area:  
54.6 SqM / 588 SqFt  
Living Area:  
7015 mm x 4425 mm  
Bedroom 1:  
4700 mm x 3290 mm  
Balcony:  
5.2 SqM / 56 SqFt

**11A 03.03**  
**1 BEDROOM**  
Internal Area:  
55.4 SqM / 596 SqFt  
Living Area:  
7015 mm x 4535 mm  
Bedroom 1:  
4700 mm x 3290 mm  
Balcony:  
10.4 SqM / 112 SqFt

Park View

	07
	06
	05
	04
	03
	02
	01
	GF





**ROYAL WHARF**  
LONDON

**Endeavour House**

FLOOR CORE

**04 A**

**LEGEND**

- C: Cupboard
- W: Wardrobe
- FF: Fridge Freezer
- WM: Washer / Dryer
- B: Balcony
- T: Terrace

**NOTES**



**Disclaimer**

This brochure and the information contained in it does not form part of any contract, and while reasonable effort has been made to ensure accuracy, this cannot be guaranteed and no representation or warranty is made in that regard. Apartment designs and layouts are indicative only and may change. The specification of the apartments is the anticipated specification as at the date this brochure was prepared, but may be subject to change in accordance with permitted variances under the apartment sale contracts. Dimensions shown in any text or plan are approximate sizes only and actual sizes may be different once constructed (although it is not anticipated that any apartments will be reduced by more than 5% in size). Computer generated images and photos are indicative only. All sales remain subject to contract. All information regarding prospective commercial or retail tenants represents current intention only, and the final identity of the tenants may change. Furniture shown in Computer Generated Images and photos is not included in sales. Royal Wharf is a marketing name only and will not necessarily form part of the approved postal address. Neither the agents nor any person in their employ has any authority to make or give any representation warranty or guarantee (whether written or oral) in respect of or in relation to the development (or any parts thereof). © 2014 Royal Wharf

[www.royalwharf.com](http://www.royalwharf.com)

11A  
04.06

**3 BEDROOM**

**Internal Area:**  
96.4 SqM / 1038 SqFt  
**Living Area:**  
7615 mm x 7015 mm  
**Bedroom 1:**  
4770 mm x 2715 mm  
**Bedroom 2:**  
4000 mm x 3700 mm  
**Bedroom 3:**  
3640 mm x 2595 mm  
**Balcony:**  
10.4 SqM / 112 SqFt

11A  
04.01

**1 BEDROOM**

**Internal Area:**  
51.9 SqM / 559 SqFt  
**Living Area:**  
7015 mm x 4925 mm  
**Bedroom 1:**  
4770 mm x 2820 mm  
**Balcony:**  
5.2 SqM / 56 SqFt

11A  
04.02

**2 BEDROOM + S**

**Internal Area:**  
95.8 SqM / 1031 SqFt  
**Living Area:**  
8490 mm x 5010 mm  
**Bedroom 1:**  
4740 mm x 3835 mm  
**Bedroom 2:**  
4030 mm x 2945 mm  
**Study:**  
3235 mm x 2340 mm  
**Balcony:**  
10.4 SqM / 112 SqFt



11A  
04.05

**3 BEDROOM**

**Internal Area:**  
96.7 SqM / 1041 SqFt  
**Living Area:**  
7615 mm x 7015 mm  
**Bedroom 1:**  
4770 mm x 2715 mm  
**Bedroom 2:**  
4000 mm x 3070 mm  
**Bedroom 3:**  
3640 mm x 2595 mm  
**Balcony:**  
10.4 SqM / 112 SqFt

11A  
04.04

**1 BEDROOM**

**Internal Area:**  
54.6 SqM / 588 SqFt  
**Living Area:**  
7015 mm x 4425 mm  
**Bedroom 1:**  
4700 mm x 3290 mm  
**Balcony:**  
10.4 SqM / 112 SqFt

11A  
04.03

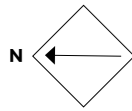
**1 BEDROOM**

**Internal Area:**  
55.4 SqM / 596 SqFt  
**Living Area:**  
7015 mm x 4535 mm  
**Bedroom 1:**  
4700 mm x 3290 mm  
**Balcony:**  
5.2 SqM / 56 SqFt

Park View

	07
	06
	05
	04
	03
	02
	01
	GF





**ROYAL WHARF**  
LONDON

**Endeavour House**

FLOOR CORE

**05 A**

**LEGEND**

- C: Cupboard
- W: Wardrobe
- FF: Fridge Freezer
- WM: Washer / Dryer
- B: Balcony
- T: Terrace

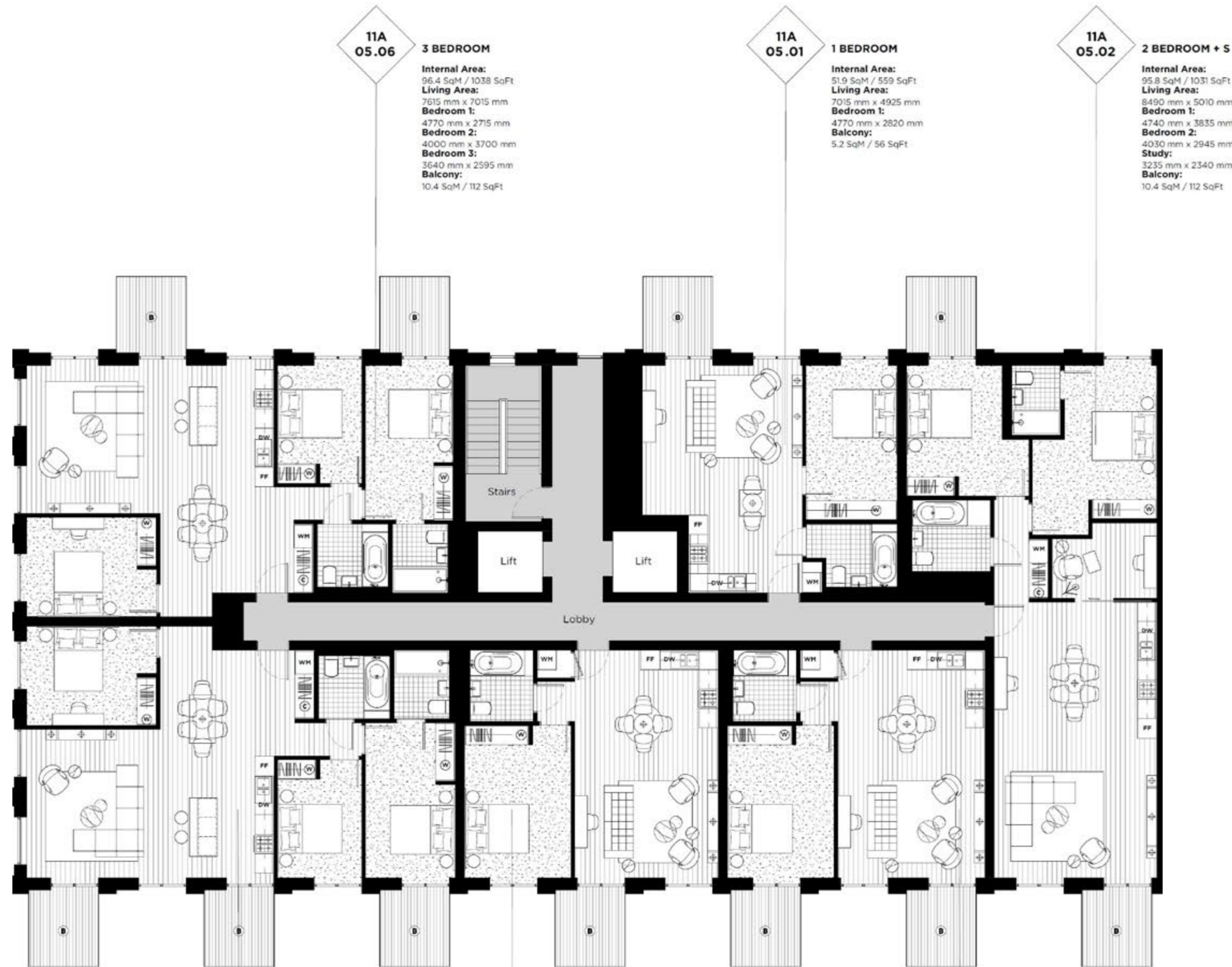
**NOTES**



**Disclaimer**

This brochure and the information contained in it does not form part of any contract, and while reasonable effort has been made to ensure accuracy, this cannot be guaranteed and no representation or warranty is made in that regard. Apartment designs and layouts are indicative only and may change. The specification of the apartments is the anticipated specification as at the date this brochure was prepared, but may be subject to change in accordance with permitted variances under the apartment sale contracts. Dimensions shown in any text or plan are approximate sizes only and actual sizes may be different once constructed (although it is not anticipated that any apartments will be reduced by more than 5% in size). Computer generated images and photos are indicative only. All sales remain subject to contract. All information regarding prospective commercial or retail tenants represents current intention only, and the final identity of the tenants may change. Furniture shown in Computer Generated Images and photos is not included in sales. Royal Wharf is a marketing name only and will not necessarily form part of the approved postal address. Neither the agents nor any person in their employ has any authority to make or give any representation warranty or guarantee (whether written or oral) in respect of or in relation to the development (or any parts thereof). © 2014 Royal Wharf

[www.royalwharf.com](http://www.royalwharf.com)



**11A 05.06**  
**3 BEDROOM**  
Internal Area: 96.4 SqM / 1038 SqFt  
Living Area: 7615 mm x 7015 mm  
Bedroom 1: 4770 mm x 2715 mm  
Bedroom 2: 4000 mm x 3700 mm  
Bedroom 3: 3640 mm x 2595 mm  
Balcony: 10.4 SqM / 112 SqFt

**11A 05.01**  
**1 BEDROOM**  
Internal Area: 51.9 SqM / 559 SqFt  
Living Area: 7015 mm x 4925 mm  
Bedroom 1: 4770 mm x 2820 mm  
Balcony: 5.2 SqM / 56 SqFt

**11A 05.02**  
**2 BEDROOM + S**  
Internal Area: 95.8 SqM / 1031 SqFt  
Living Area: 8490 mm x 5010 mm  
Bedroom 1: 4740 mm x 3835 mm  
Bedroom 2: 4030 mm x 2945 mm  
Study: 3235 mm x 2340 mm  
Balcony: 10.4 SqM / 112 SqFt

**11A 05.05**  
**3 BEDROOM**  
Internal Area: 96.7 SqM / 1041 SqFt  
Living Area: 7615 mm x 7015 mm  
Bedroom 1: 4770 mm x 2715 mm  
Bedroom 2: 4000 mm x 3070 mm  
Bedroom 3: 3640 mm x 2595 mm  
Balcony: 15.6 SqM / 168 SqFt

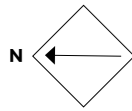
**11A 05.04**  
**1 BEDROOM**  
Internal Area: 54.6 SqM / 588 SqFt  
Living Area: 7015 mm x 4425 mm  
Bedroom 1: 4700 mm x 3290 mm  
Balcony: 5.2 SqM / 56 SqFt

**11A 05.03**  
**1 BEDROOM**  
Internal Area: 55.4 SqM / 596 SqFt  
Living Area: 7015 mm x 4535 mm  
Bedroom 1: 4700 mm x 3290 mm  
Balcony: 10.4 SqM / 112 SqFt

07
06
05
04
03
02
01
GF

Park View





**ROYAL WHARF**  
LONDON

**Endeavour House**

FLOOR CORE

**06 A**

**LEGEND**

- C: Cupboard
- W: Wardrobe
- FF: Fridge Freezer
- WM: Washer / Dryer
- B: Balcony
- T: Terrace

**NOTES**



**Disclaimer**

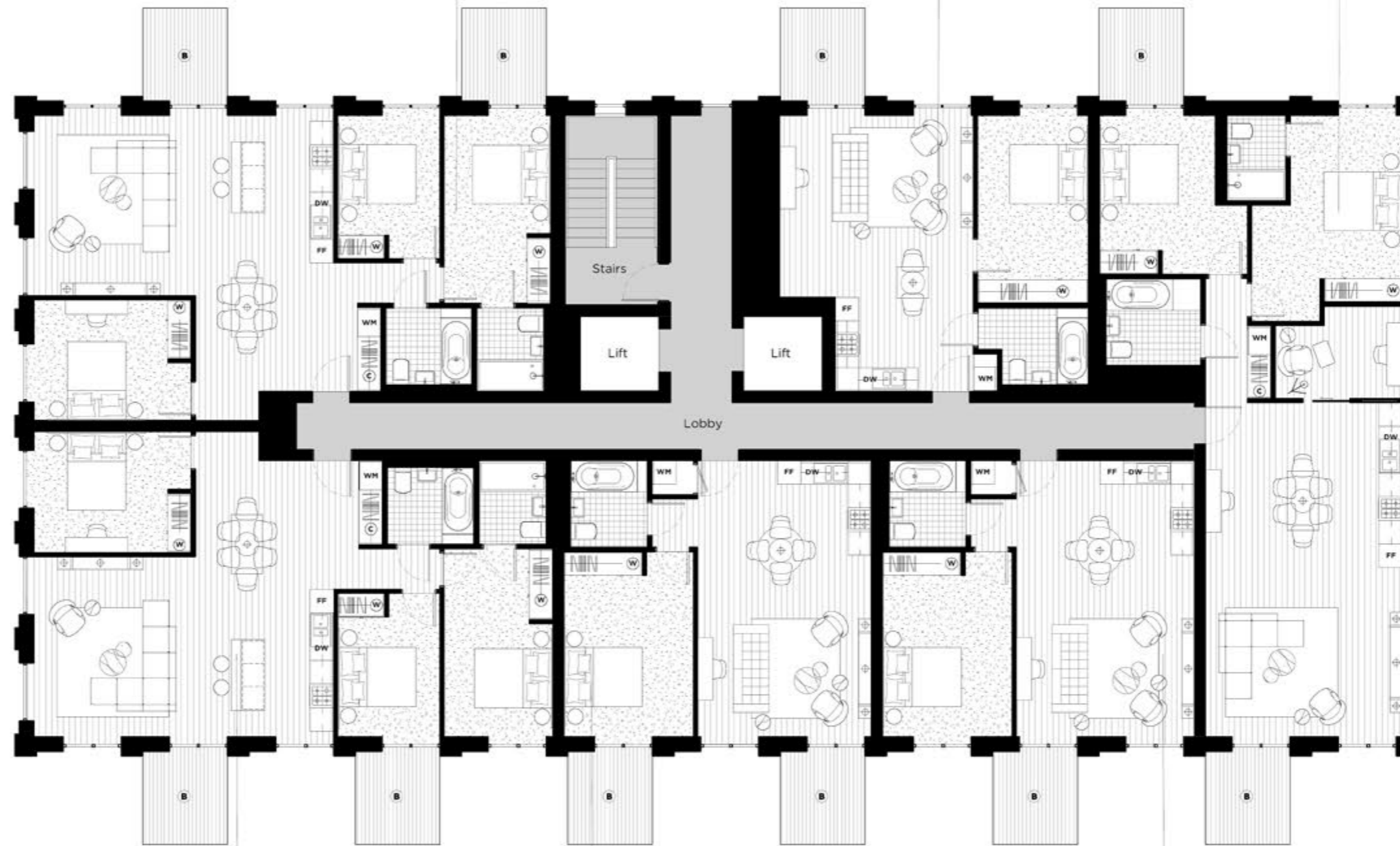
This brochure and the information contained in it does not form part of any contract, and while reasonable effort has been made to ensure accuracy, this cannot be guaranteed and no representation or warranty is made in that regard. Apartment designs and layouts are indicative only and may change. The specification of the apartments is the anticipated specification as at the date this brochure was prepared, but may be subject to change in accordance with permitted variances under the apartment sale contracts. Dimensions shown in any text or plan are approximate sizes only and actual sizes may be different once constructed (although it is not anticipated that any apartments will be reduced by more than 5% in size). Computer generated images and photos are indicative only. All sales remain subject to contract. All information regarding prospective commercial or retail tenants represents current intention only, and the final identity of the tenants may change. Furniture shown in Computer Generated Images and photos is not included in sales. Royal Wharf is a marketing name only and will not necessarily form part of the approved postal address. Neither the agents nor any person in their employ has any authority to make or give any representation warranty or guarantee (whether written or oral) in respect of or in relation to the development (or any parts thereof). © 2014 Royal Wharf

[www.royalwharf.com](http://www.royalwharf.com)

**11A 06.06**  
**3 BEDROOM**  
Internal Area:  
96.4 SqM / 1038 SqFt  
Living Area:  
7615 mm x 7015 mm  
Bedroom 1:  
4770 mm x 2715 mm  
Bedroom 2:  
4000 mm x 3700 mm  
Bedroom 3:  
3640 mm x 2595 mm  
Balcony:  
10.4 SqM / 112 SqFt

**11A 06.01**  
**1 BEDROOM**  
Internal Area:  
51.9 SqM / 559 SqFt  
Living Area:  
7015 mm x 4925 mm  
Bedroom 1:  
4770 mm x 2820 mm  
Balcony:  
5.2 SqM / 56 SqFt

**11A 06.02**  
**2 BEDROOM + S**  
Internal Area:  
95.8 SqM / 1031 SqFt  
Living Area:  
8490 mm x 5010 mm  
Bedroom 1:  
4740 mm x 3835 mm  
Bedroom 2:  
4030 mm x 2945 mm  
Study:  
3235 mm x 2340 mm  
Balcony:  
10.4 SqM / 112 SqFt



**11A 06.05**  
**3 BEDROOM**  
Internal Area:  
96.7 SqM / 1041 SqFt  
Living Area:  
7615 mm x 7015 mm  
Bedroom 1:  
4770 mm x 2715 mm  
Bedroom 2:  
4000 mm x 3070 mm  
Bedroom 3:  
3640 mm x 2595 mm  
Balcony:  
10.4 SqM / 112 SqFt

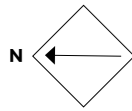
**11A 06.04**  
**1 BEDROOM**  
Internal Area:  
54.6 SqM / 588 SqFt  
Living Area:  
7015 mm x 4425 mm  
Bedroom 1:  
4700 mm x 3290 mm  
Balcony:  
10.4 SqM / 112 SqFt

**11A 06.03**  
**1 BEDROOM**  
Internal Area:  
55.4 SqM / 596 SqFt  
Living Area:  
7015 mm x 4535 mm  
Bedroom 1:  
4700 mm x 3290 mm  
Balcony:  
5.2 SqM / 56 SqFt

Park View

	07
	06
	05
	04
	03
	02
	01
	GF





**ROYAL WHARF**  
LONDON

**Endeavour House**

FLOOR CORE

**07 A**

**LEGEND**

- C: Cupboard
- W: Wardrobe
- FF: Fridge Freezer
- WM: Washer / Dryer
- B: Balcony
- T: Terrace

**NOTES**



**Disclaimer**

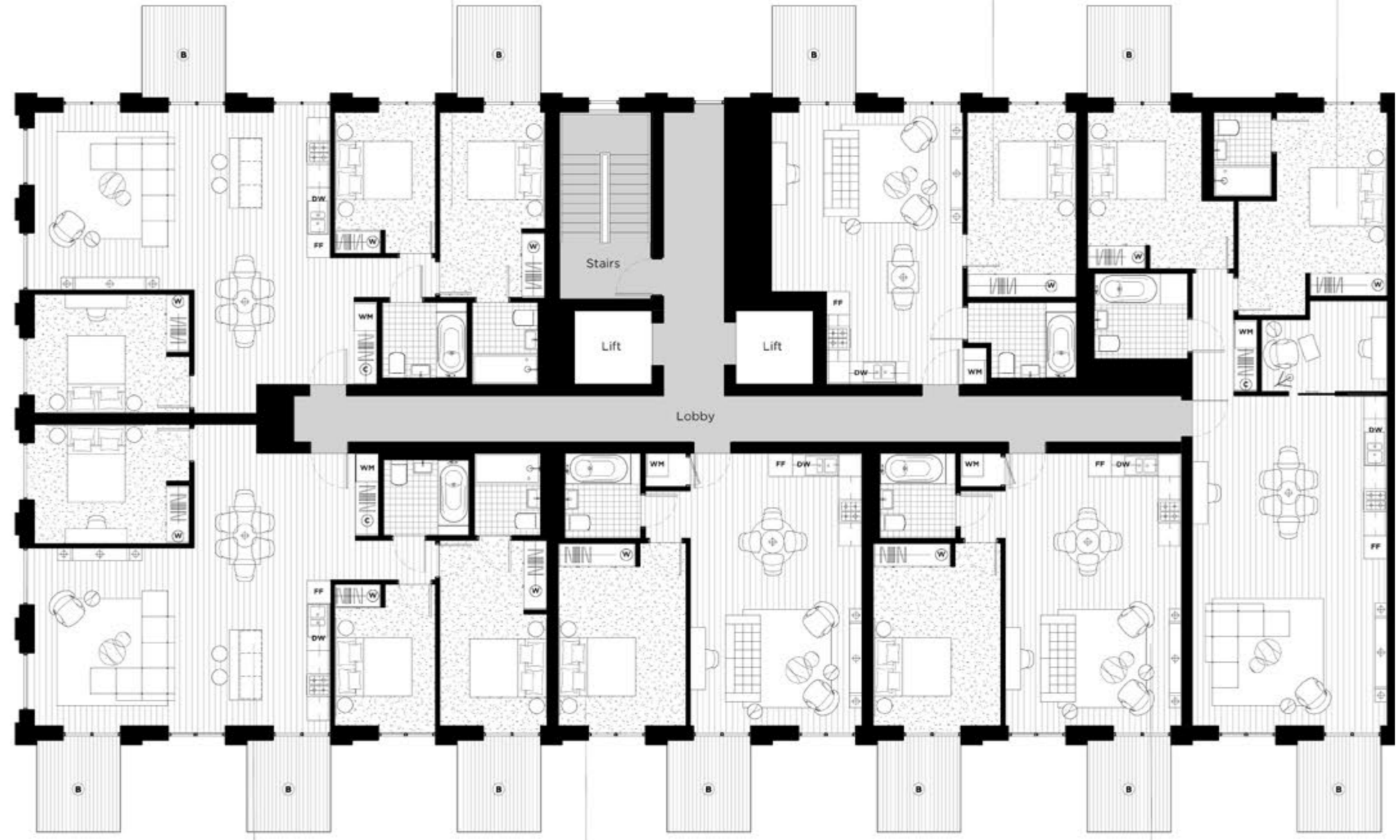
This brochure and the information contained in it does not form part of any contract, and while reasonable effort has been made to ensure accuracy, this cannot be guaranteed and no representation or warranty is made in that regard. Apartment designs and layouts are indicative only and may change. The specification of the apartments is the anticipated specification as at the date this brochure was prepared, but may be subject to change in accordance with permitted variances under the apartment sale contracts. Dimensions shown in any text or plan are approximate sizes only and actual sizes may be different once constructed (although it is not anticipated that any apartments will be reduced by more than 5% in size). Computer generated images and photos are indicative only. All sales remain subject to contract. All information regarding prospective commercial or retail tenants represents current intention only, and the final identity of the tenants may change. Furniture shown in Computer Generated Images and photos is not included in sales. Royal Wharf is a marketing name only and will not necessarily form part of the approved postal address. Neither the agents nor any person in their employ has any authority to make or give any representation warranty or guarantee (whether written or oral) in respect of or in relation to the development (or any parts thereof). © 2014 Royal Wharf

[www.royalwharf.com](http://www.royalwharf.com)

**11A 07.06**  
**3 BEDROOM**  
Internal Area:  
96.4 SqM / 1038 SqFt  
Living Area:  
7615 mm x 7015 mm  
Bedroom 1:  
4770 mm x 2715 mm  
Bedroom 2:  
4000 mm x 3700 mm  
Bedroom 3:  
3640 mm x 2595 mm  
Balcony:  
10.4 SqM / 112 SqFt

**11A 07.01**  
**1 BEDROOM**  
Internal Area:  
51.9 SqM / 559 SqFt  
Living Area:  
7015 mm x 4925 mm  
Bedroom 1:  
4770 mm x 2820 mm  
Balcony:  
5.2 SqM / 56 SqFt

**11A 07.02**  
**2 BEDROOM + S**  
Internal Area:  
95.8 SqM / 1031 SqFt  
Living Area:  
8490 mm x 5010 mm  
Bedroom 1:  
4740 mm x 3835 mm  
Bedroom 2:  
4030 mm x 2945 mm  
Study:  
3235 mm x 2340 mm  
Balcony:  
10.4 SqM / 112 SqFt



**11A 07.05**  
**3 BEDROOM**  
Internal Area:  
96.7 SqM / 1041 SqFt  
Living Area:  
7615 mm x 7015 mm  
Bedroom 1:  
4770 mm x 2715 mm  
Bedroom 2:  
4000 mm x 3070 mm  
Bedroom 3:  
3640 mm x 2595 mm  
Balcony:  
15.6 SqM / 168 SqFt

**11A 07.04**  
**1 BEDROOM**  
Internal Area:  
54.6 SqM / 588 SqFt  
Living Area:  
7015 mm x 4425 mm  
Bedroom 1:  
4700 mm x 3290 mm  
Balcony:  
5.2 SqM / 56 SqFt

**11A 07.03**  
**1 BEDROOM**  
Internal Area:  
55.4 SqM / 596 SqFt  
Living Area:  
7015 mm x 4535 mm  
Bedroom 1:  
4700 mm x 3290 mm  
Balcony:  
10.4 SqM / 112 SqFt

Park View

	07
	06
	05
	04
	03
	02
	01
	GF



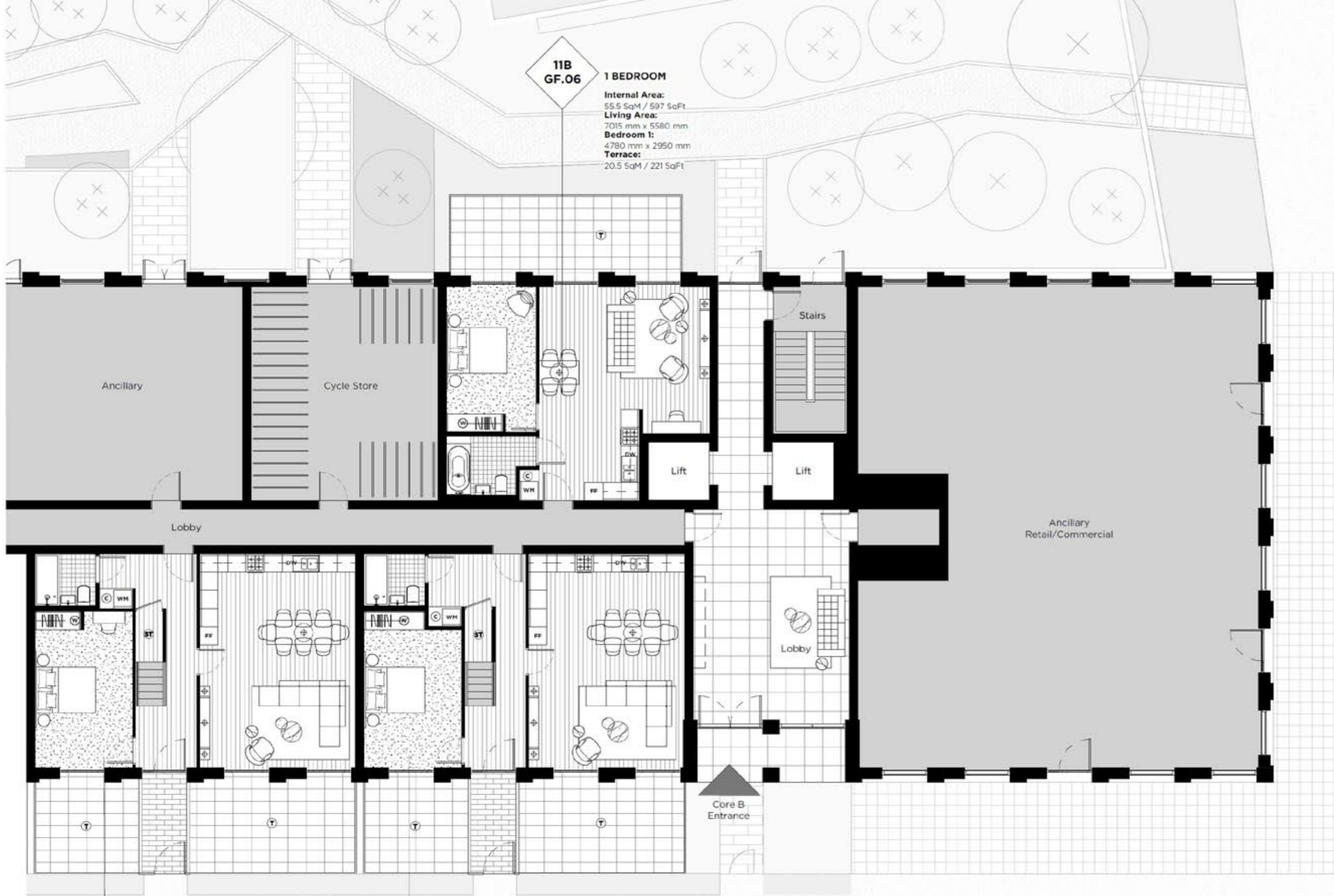
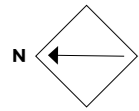


ROYAL WHARF

LONDON

Endeavour House

CORE B



**11B GF.06**  
**1 BEDROOM**  
 Internal Area:  
 55.5 SqM / 597 SqFt  
 Living Area:  
 7015 mm x 5580 mm  
 Bedroom 1:  
 4780 mm x 2950 mm  
 Terrace:  
 20.5 SqM / 221 SqFt

**11B GF.04**  
**4 BEDROOM DUPLEX L**  
 Internal Area:  
 146.1 SqM / 1573 SqFt  
 Living Area:  
 7015 mm x 5120 mm  
 Bedroom 1:  
 5225 mm x 4310 mm  
 Bedroom 2:  
 5225 mm x 3225 mm  
 Bedroom 3:  
 5125 mm x 3200 mm  
 Bedroom 4:  
 3560 mm x 2780 mm  
 Terrace:  
 33.8 SqM / 364 SqFt

**11B GF.05**  
**4 BEDROOM DUPLEX L**  
 Internal Area:  
 145.8 SqM / 1569 SqFt  
 Living Area:  
 7015 mm x 5120 mm  
 Bedroom 1:  
 5225 mm x 4310 mm  
 Bedroom 2:  
 5225 mm x 3225 mm  
 Bedroom 3:  
 5125 mm x 3200 mm  
 Bedroom 4:  
 3560 mm x 2780 mm  
 Terrace:  
 33.8 SqM / 364 SqFt

- 07
- 06
- 05
- 04
- 03
- 02
- 01
- GF



**ROYAL WHARF**  
 LONDON

**Endeavour House**

FLOOR CORE

**GF B**

**LEGEND**

- C: Cupboard
- W: Wardrobe
- FF: Fridge Freezer
- WM: Washer / Dryer
- B: Balcony
- T: Terrace

**NOTES**

River

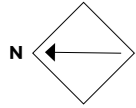


**Disclaimer**  
 This brochure and the information contained in it does not form part of any contract, and while reasonable effort has been made to ensure accuracy, this cannot be guaranteed and no representation or warranty is made in that regard. Apartment designs and layouts are indicative only and may change. The specification of the apartments is the anticipated specification as at the date this brochure was prepared, but may be subject to change in accordance with permitted variances under the apartment sale contracts. Dimensions shown in any text or plan are approximate sizes only and actual sizes may be different once constructed (although it is not anticipated that any apartments will be reduced by more than 5% in size). Computer generated images and photos are indicative only. All sales remain subject to contract. All information regarding prospective commercial or retail tenants represents current intention only, and the final identity of the tenants may change. Furniture shown in Computer Generated Images and photos is not included in sales. Royal Wharf is a marketing name only and will not necessarily form part of the approved postal address. Neither the agents nor any person in their employ has any authority to make or give any representation warranty or guarantee (whether written or oral) in respect of or in relation to the development (or any parts thereof). © 2014 Royal Wharf

[www.royalwharf.com](http://www.royalwharf.com)

Park





**ROYAL WHARF**  
LONDON

**Endeavour House**

FLOOR CORE

**01 B**

**LEGEND**

- C: Cupboard
- W: Wardrobe
- FF: Fridge Freezer
- WM: Washer / Dryer
- B: Balcony
- T: Terrace

**NOTES**

---



---



---



---



---



**Disclaimer**

This brochure and the information contained in it does not form part of any contract, and while reasonable effort has been made to ensure accuracy, this cannot be guaranteed and no representation or warranty is made in that regard. Apartment designs and layouts are indicative only and may change. The specification of the apartments is the anticipated specification as at the date this brochure was prepared, but may be subject to change in accordance with permitted variances under the apartment sale contracts. Dimensions shown in any text or plan are approximate sizes only and actual sizes may be different once constructed (although it is not anticipated that any apartments will be reduced by more than 5% in size). Computer generated images and photos are indicative only. All sales remain subject to contract. All information regarding prospective commercial or retail tenants represents current intention only, and the final identity of the tenants may change. Furniture shown in Computer Generated Images and photos is not included in sales. Royal Wharf is a marketing name only and will not necessarily form part of the approved postal address. Neither the agents nor any person in their employ has any authority to make or give any representation warranty or guarantee (whether written or oral) in respect of or in relation to the development (or any parts thereof). © 2014 Royal Wharf

[www.royalwharf.com](http://www.royalwharf.com)

**11B 01.05**

**1 BEDROOM**  
Internal Area:  
59.5 SqM / 640 SqFt  
Living Area:  
8490 mm x 5130 mm  
Bedroom 1:  
4125 mm x 3580 mm  
Balcony:  
5.2 SqM / 56 SqFt

**11B 01.06**

**2 BEDROOM**  
Internal Area:  
75.3 SqM / 811 SqFt  
Living Area:  
7015 mm x 5070mm  
Bedroom 1:  
4770 mm x 3380 mm  
Bedroom 2:  
3635 mm x 2765 mm  
Balcony:  
10.4 SqM / 112 SqFt



**11B GF.04**

**4 BEDROOM DUPLEX U**  
Internal Area:  
146.1 SqM / 1573 SqFt  
Living Area:  
7015 mm x 5120 mm  
Bedroom 1:  
5225 mm x 4310 mm  
Bedroom 2:  
5225 mm x 3225 mm  
Bedroom 3:  
5125 mm x 3200 mm  
Bedroom 4:  
3560 mm x 2780 mm  
Terrace:  
33.8 SqM / 364 SqFt

**11B GF.05**

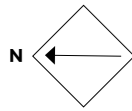
**4 BEDROOM DUPLEX U**  
Internal Area:  
145.8 SqM / 1569 SqFt  
Living Area:  
7015 mm x 5120 mm  
Bedroom 1:  
5225 mm x 4310 mm  
Bedroom 2:  
5225 mm x 3225 mm  
Bedroom 3:  
5125 mm x 3200 mm  
Bedroom 4:  
3560 mm x 2780 mm  
Terrace:  
33.8 SqM / 364 SqFt

River View

Park View

	07
	06
	05
	04
	03
	02
	01
	GF





**ROYAL WHARF**  
LONDON

**Endeavour House**

FLOOR CORE

**02 B**

**LEGEND**

- C: Cupboard
- W: Wardrobe
- FF: Fridge Freezer
- WM: Washer / Dryer
- B: Balcony
- T: Terrace

**NOTES**

---



---



---



---



---



---



**Disclaimer**

This brochure and the information contained in it does not form part of any contract, and while reasonable effort has been made to ensure accuracy, this cannot be guaranteed and no representation or warranty is made in that regard. Apartment designs and layouts are indicative only and may change. The specification of the apartments is the anticipated specification as at the date this brochure was prepared, but may be subject to change in accordance with permitted variances under the apartment sale contracts. Dimensions shown in any text or plan are approximate sizes only and actual sizes may be different once constructed (although it is not anticipated that any apartments will be reduced by more than 5% in size). Computer generated images and photos are indicative only. All sales remain subject to contract. All information regarding prospective commercial or retail tenants represents current intention only, and the final identity of the tenants may change. Furniture shown in Computer Generated Images and photos is not included in sales. Royal Wharf is a marketing name only and will not necessarily form part of the approved postal address. Neither the agents nor any person in their employ has any authority to make or give any representation warranty or guarantee (whether written or oral) in respect of or in relation to the development (or any parts thereof). © 2014 Royal Wharf



River View

Park View

	07
	06
	05
	04
	03
	02
	01
	GF

**11B 02.11**  
**2 BEDROOM + S**  
Internal Area:  
95.0 SqM / 1023 SqFt  
Living Area:  
8490 mm x 4945 mm  
Bedroom 1:  
4740 mm x 3805 mm  
Bedroom 2:  
4025 mm x 3750 mm  
Study:  
3205 mm x 2340 mm  
Balcony:  
10.4 SqM / 112 SqFt

**11B 02.12**  
**2 BEDROOM**  
Internal Area:  
75.3 SqM / 811 SqFt  
Living Area:  
7015 mm x 5120mm  
Bedroom 1:  
4770 mm x 3380 mm  
Bedroom 2:  
3635 mm x 2765 mm  
Balcony:  
10.4 SqM / 112 SqFt

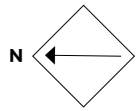
**11B 02.07**  
**3 BEDROOM**  
Internal Area:  
93.5 SqM / 1006 SqFt  
Living Area:  
7750 mm x 5630 mm  
Bedroom 1:  
3830 mm x 2840 mm  
Bedroom 2:  
3635 mm x 2490 mm  
Bedroom 3:  
3635 mm x 3270 mm  
Balcony:  
10.4 SqM / 112 SqFt

**11B 02.10**  
**1 BEDROOM**  
Internal Area:  
55.7 SqM / 600 SqFt  
Living Area:  
7015 mm x 4590 mm  
Bedroom 1:  
4700 mm x 3290 mm  
Balcony:  
10.4 SqM / 112 SqFt

**11B 02.09**  
**2 BEDROOM**  
Internal Area:  
73.7 SqM / 793 SqFt  
Living Area:  
7015 mm x 6375 mm  
Bedroom 1:  
4755 mm x 2710 mm  
Bedroom 2:  
3635 mm x 3270 mm  
Balcony:  
10.4 SqM / 112 SqFt

**11B 02.08**  
**3 BEDROOM**  
Internal Area:  
93.5 SqM / 1006 SqFt  
Living Area:  
7750 mm x 5630 mm  
Bedroom 1:  
3830 mm x 2840 mm  
Bedroom 2:  
3635 mm x 2490 mm  
Bedroom 3:  
3635 mm x 3270 mm  
Balcony:  
10.4 SqM / 112 SqFt





**ROYAL WHARF**  
LONDON

**Endeavour House**

FLOOR CORE

**03 B**

**LEGEND**

- C: Cupboard
- W: Wardrobe
- FF: Fridge Freezer
- WM: Washer / Dryer
- B: Balcony
- T: Terrace

**NOTES**

---

---

---

---

---

---

---

---



**Disclaimer**

This brochure and the information contained in it does not form part of any contract, and while reasonable effort has been made to ensure accuracy, this cannot be guaranteed and no representation or warranty is made in that regard. Apartment designs and layouts are indicative only and may change. The specification of the apartments is the anticipated specification as at the date this brochure was prepared, but may be subject to change in accordance with permitted variances under the apartment sale contracts. Dimensions shown in any text or plan are approximate sizes only and actual sizes may be different once constructed (although it is not anticipated that any apartments will be reduced by more than 5% in size). Computer generated images and photos are indicative only. All sales remain subject to contract. All information regarding prospective commercial or retail tenants represents current intention only, and the final identity of the tenants may change. Furniture shown in Computer Generated Images and photos is not included in sales. Royal Wharf is a marketing name only and will not necessarily form part of the approved postal address. Neither the agents nor any person in their employ has any authority to make or give any representation warranty or guarantee (whether written or oral) in respect of or in relation to the development (or any parts thereof). © 2014 Royal Wharf

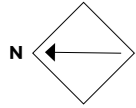
	07
	06
	05
	04
	03
	02
	01
	GF



River View

Park View





**ROYAL WHARF**  
LONDON

**Endeavour House**

FLOOR CORE

**04 B**

**LEGEND**

- C: Cupboard
- W: Wardrobe
- FF: Fridge Freezer
- WM: Washer / Dryer
- B: Balcony
- T: Terrace

**NOTES**

---

---

---

---

---

---

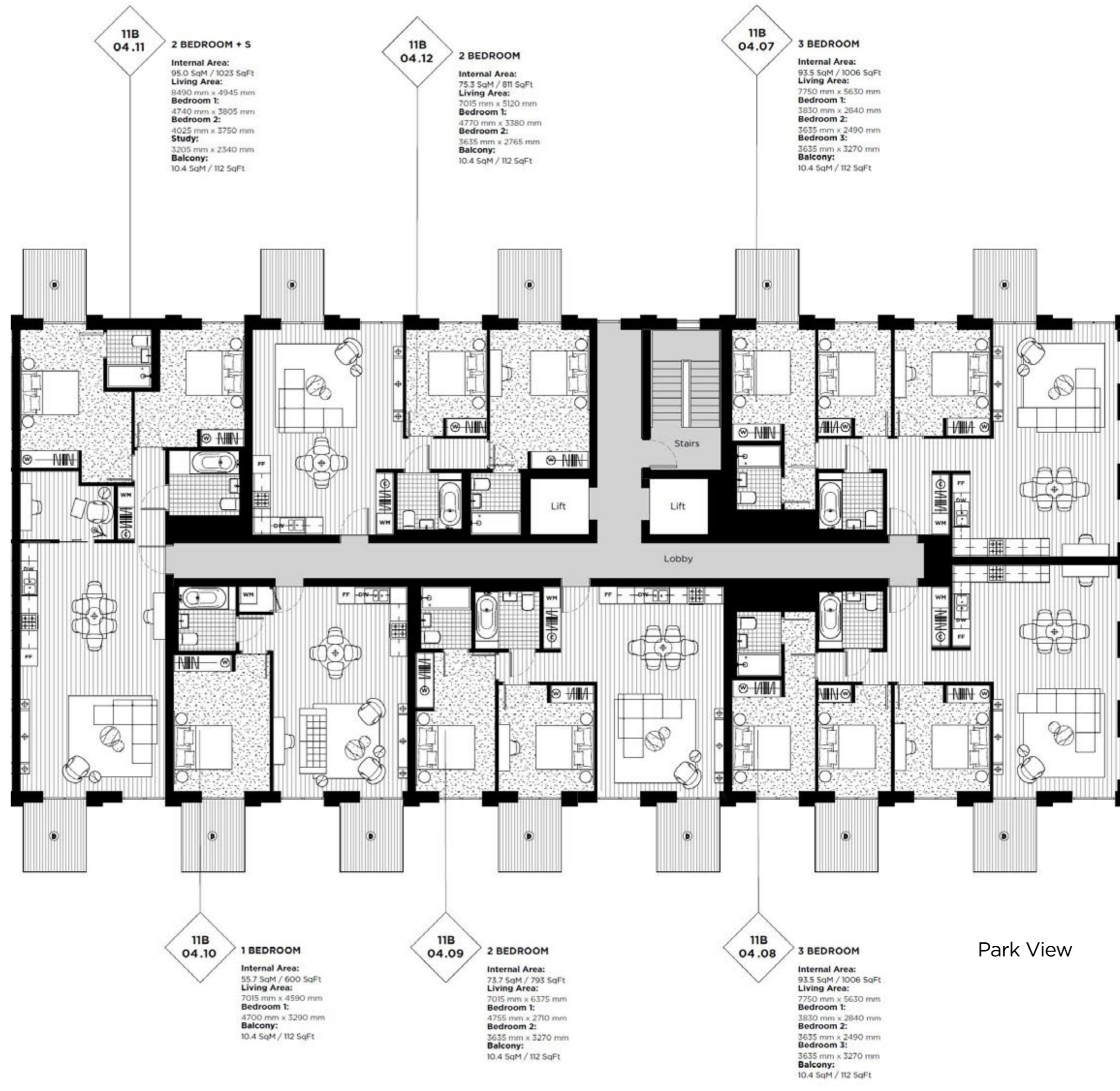
---

---



**Disclaimer**

This brochure and the information contained in it does not form part of any contract, and while reasonable effort has been made to ensure accuracy, this cannot be guaranteed and no representation or warranty is made in that regard. Apartment designs and layouts are indicative only and may change. The specification of the apartments is the anticipated specification as at the date this brochure was prepared, but may be subject to change in accordance with permitted variances under the apartment sale contracts. Dimensions shown in any text or plan are approximate sizes only and actual sizes may be different once constructed (although it is not anticipated that any apartments will be reduced by more than 5% in size). Computer generated images and photos are indicative only. All sales remain subject to contract. All information regarding prospective commercial or retail tenants represents current intention only, and the final identity of the tenants may change. Furniture shown in Computer Generated Images and photos is not included in sales. Royal Wharf is a marketing name only and will not necessarily form part of the approved postal address. Neither the agents nor any person in their employ has any authority to make or give any representation warranty or guarantee (whether written or oral) in respect of or in relation to the development (or any parts thereof). © 2014 Royal Wharf



River View

Park View

**11B 04.11**  
**2 BEDROOM + S**  
Internal Area: 95.0 SqM / 1023 SqFt  
Living Area: 8490 mm x 4945 mm  
Bedroom 1: 4740 mm x 3905 mm  
Bedroom 2: 4025 mm x 3750 mm  
Study: 3205 mm x 2340 mm  
Balcony: 10.4 SqM / 112 SqFt

**11B 04.12**  
**2 BEDROOM**  
Internal Area: 75.3 SqM / 811 SqFt  
Living Area: 7015 mm x 5120 mm  
Bedroom 1: 4770 mm x 3380 mm  
Bedroom 2: 3635 mm x 2765 mm  
Balcony: 10.4 SqM / 112 SqFt

**11B 04.07**  
**3 BEDROOM**  
Internal Area: 93.5 SqM / 1006 SqFt  
Living Area: 7750 mm x 5630 mm  
Bedroom 1: 3830 mm x 2840 mm  
Bedroom 2: 3635 mm x 2490 mm  
Bedroom 3: 3635 mm x 3270 mm  
Balcony: 10.4 SqM / 112 SqFt

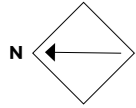
**11B 04.10**  
**1 BEDROOM**  
Internal Area: 55.7 SqM / 600 SqFt  
Living Area: 7015 mm x 4590 mm  
Bedroom 1: 4700 mm x 3290 mm  
Balcony: 10.4 SqM / 112 SqFt

**11B 04.09**  
**2 BEDROOM**  
Internal Area: 73.7 SqM / 793 SqFt  
Living Area: 7015 mm x 6375 mm  
Bedroom 1: 4755 mm x 2710 mm  
Bedroom 2: 3635 mm x 3270 mm  
Balcony: 10.4 SqM / 112 SqFt

**11B 04.08**  
**3 BEDROOM**  
Internal Area: 93.5 SqM / 1006 SqFt  
Living Area: 7750 mm x 5630 mm  
Bedroom 1: 3830 mm x 2840 mm  
Bedroom 2: 3635 mm x 2490 mm  
Bedroom 3: 3635 mm x 3270 mm  
Balcony: 10.4 SqM / 112 SqFt

	07
	06
	05
	04
	03
	02
	01
	GF





**ROYAL WHARF**  
LONDON

**Endeavour House**

FLOOR CORE

**05 B**

**LEGEND**

- C: Cupboard
- W: Wardrobe
- FF: Fridge Freezer
- WM: Washer / Dryer
- B: Balcony
- T: Terrace

**NOTES**

---

---

---

---

---

---

---

---



**Disclaimer**

This brochure and the information contained in it does not form part of any contract, and while reasonable effort has been made to ensure accuracy, this cannot be guaranteed and no representation or warranty is made in that regard. Apartment designs and layouts are indicative only and may change. The specification of the apartments is the anticipated specification as at the date this brochure was prepared, but may be subject to change in accordance with permitted variances under the apartment sale contracts. Dimensions shown in any text or plan are approximate sizes only and actual sizes may be different once constructed (although it is not anticipated that any apartments will be reduced by more than 5% in size). Computer generated images and photos are indicative only. All sales remain subject to contract. All information regarding prospective commercial or retail tenants represents current intention only, and the final identity of the tenants may change. Furniture shown in Computer Generated Images and photos is not included in sales. Royal Wharf is a marketing name only and will not necessarily form part of the approved postal address. Neither the agents nor any person in their employ has any authority to make or give any representation warranty or guarantee (whether written or oral) in respect of or in relation to the development (or any parts thereof). © 2014 Royal Wharf

[www.royalwharf.com](http://www.royalwharf.com)

	07
	06
	05
	04
	03
	02
	01
	GF



**11B 05.11**  
**2 BEDROOM + S**  
Internal Area: 95.0 SqM / 1023 SqFt  
Living Area: 8490 mm x 4945 mm  
Bedroom 1: 4740 mm x 3805 mm  
Bedroom 2: 4025 mm x 3750 mm  
Study: 3205 mm x 2340 mm  
Balcony: 10.4 SqM / 112 SqFt

**11B 05.12**  
**2 BEDROOM**  
Internal Area: 75.3 SqM / 811 SqFt  
Living Area: 7015 mm x 5120 mm  
Bedroom 1: 4770 mm x 3380 mm  
Bedroom 2: 3635 mm x 2765 mm  
Balcony: 10.4 SqM / 112 SqFt

**11B 05.07**  
**3 BEDROOM**  
Internal Area: 93.5 SqM / 1006 SqFt  
Living Area: 7750 mm x 5630 mm  
Bedroom 1: 3830 mm x 2840 mm  
Bedroom 2: 3635 mm x 2490 mm  
Bedroom 3: 3635 mm x 3270 mm  
Balcony: 10.4 SqM / 112 SqFt

**11B 05.10**  
**1 BEDROOM**  
Internal Area: 55.7 SqM / 600 SqFt  
Living Area: 7015 mm x 4590 mm  
Bedroom 1: 4700 mm x 3290 mm  
Balcony: 5.2 SqM / 56 SqFt

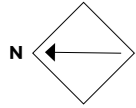
**11B 05.09**  
**2 BEDROOM**  
Internal Area: 73.7 SqM / 793 SqFt  
Living Area: 7015 mm x 6375 mm  
Bedroom 1: 4755 mm x 2710 mm  
Bedroom 2: 3635 mm x 3270 mm  
Balcony: 10.4 SqM / 112 SqFt

**11B 05.08**  
**3 BEDROOM**  
Internal Area: 93.5 SqM / 1006 SqFt  
Living Area: 7750 mm x 5630 mm  
Bedroom 1: 3830 mm x 2840 mm  
Bedroom 2: 3635 mm x 2490 mm  
Bedroom 3: 3635 mm x 3270 mm  
Balcony: 15.6 SqM / 168 SqFt

River View

Park View





**ROYAL WHARF**  
LONDON

**Endeavour House**

FLOOR CORE

**06 B**

**LEGEND**

- C: Cupboard
- W: Wardrobe
- FF: Fridge Freezer
- WM: Washer / Dryer
- B: Balcony
- T: Terrace

**NOTES**

---



---



---



---



---

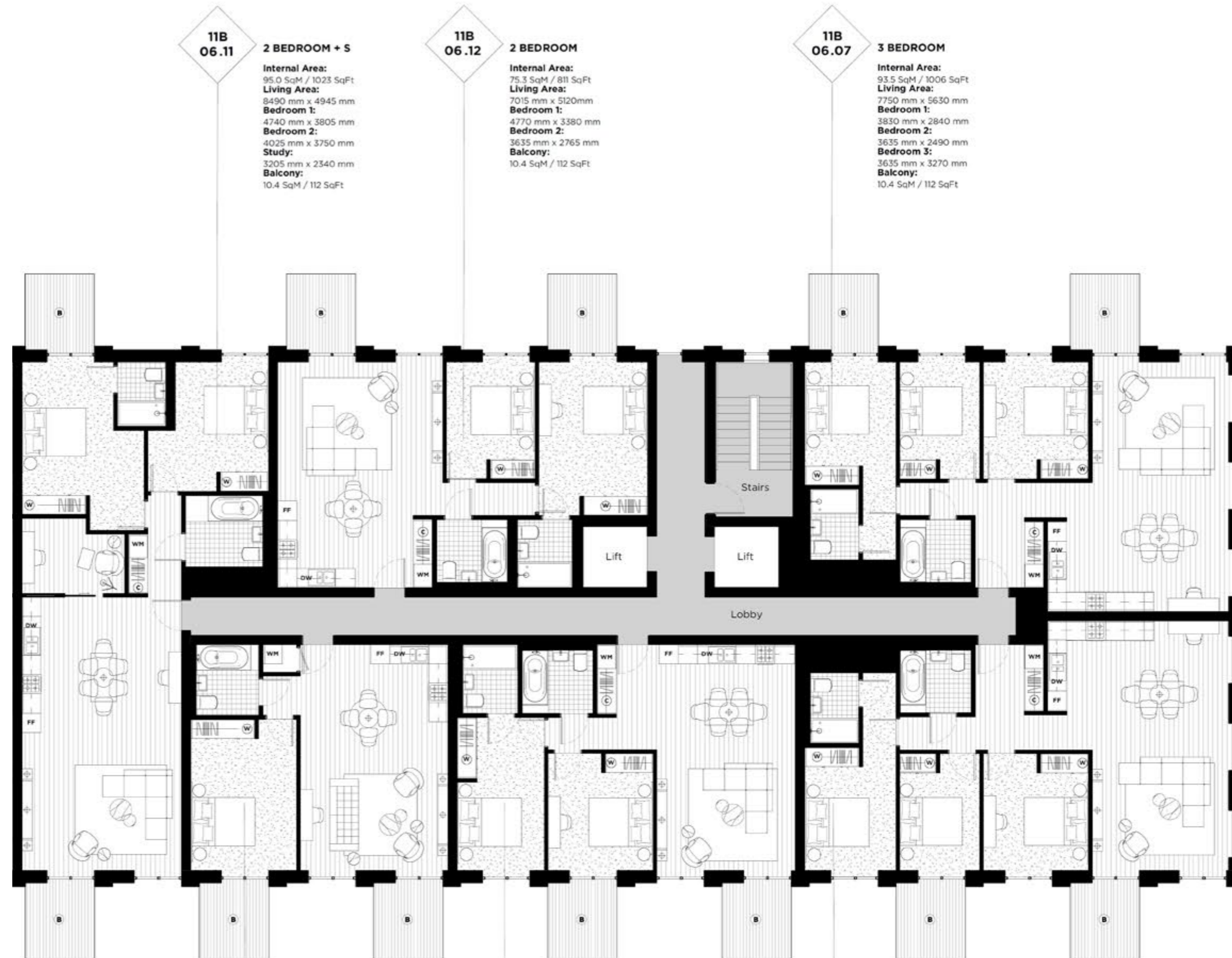


**Disclaimer**

This brochure and the information contained in it does not form part of any contract, and while reasonable effort has been made to ensure accuracy, this cannot be guaranteed and no representation or warranty is made in that regard. Apartment designs and layouts are indicative only and may change. The specification of the apartments is the anticipated specification as at the date this brochure was prepared, but may be subject to change in accordance with permitted variances under the apartment sale contracts. Dimensions shown in any text or plan are approximate sizes only and actual sizes may be different once constructed (although it is not anticipated that any apartments will be reduced by more than 5% in size). Computer generated images and photos are indicative only. All sales remain subject to contract. All information regarding prospective commercial or retail tenants represents current intention only, and the final identity of the tenants may change. Furniture shown in Computer Generated Images and photos is not included in sales. Royal Wharf is a marketing name only and will not necessarily form part of the approved postal address. Neither the agents nor any person in their employ has any authority to make or give any representation warranty or guarantee (whether written or oral) in respect of or in relation to the development (or any parts thereof). © 2014 Royal Wharf

[www.royalwharf.com](http://www.royalwharf.com)

07
06
05
04
03
02
01
GF



**11B 06.11**  
**2 BEDROOM + S**  
Internal Area: 95.0 SqM / 1023 SqFt  
Living Area: 8490 mm x 4945 mm  
Bedroom 1: 4740 mm x 3805 mm  
Bedroom 2: 4025 mm x 3750 mm  
Study: 3205 mm x 2340 mm  
Balcony: 10.4 SqM / 112 SqFt

**11B 06.12**  
**2 BEDROOM**  
Internal Area: 75.3 SqM / 811 SqFt  
Living Area: 7015 mm x 5120mm  
Bedroom 1: 4770 mm x 3380 mm  
Bedroom 2: 3635 mm x 2765 mm  
Balcony: 10.4 SqM / 112 SqFt

**11B 06.07**  
**3 BEDROOM**  
Internal Area: 93.5 SqM / 1006 SqFt  
Living Area: 7750 mm x 5630 mm  
Bedroom 1: 3830 mm x 2840 mm  
Bedroom 2: 3635 mm x 2490 mm  
Bedroom 3: 3635 mm x 3270 mm  
Balcony: 10.4 SqM / 112 SqFt

**11B 06.10**  
**1 BEDROOM**  
Internal Area: 55.7 SqM / 600 SqFt  
Living Area: 7015 mm x 4590 mm  
Bedroom 1: 4700 mm x 3290 mm  
Balcony: 10.4 SqM / 112 SqFt

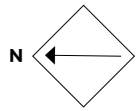
**11B 06.09**  
**2 BEDROOM**  
Internal Area: 73.7 SqM / 793 SqFt  
Living Area: 7015 mm x 6375 mm  
Bedroom 1: 4755 mm x 2710 mm  
Bedroom 2: 3635 mm x 3270 mm  
Balcony: 10.4 SqM / 112 SqFt

**11B 06.08**  
**3 BEDROOM**  
Internal Area: 93.5 SqM / 1006 SqFt  
Living Area: 7750 mm x 5630 mm  
Bedroom 1: 3830 mm x 2840 mm  
Bedroom 2: 3635 mm x 2490 mm  
Bedroom 3: 3635 mm x 3270 mm  
Balcony: 10.4 SqM / 112 SqFt

River View

Park View





**ROYAL WHARF**  
LONDON

**Endeavour House**

FLOOR CORE

**07 B**

**LEGEND**

- C: Cupboard
- W: Wardrobe
- FF: Fridge Freezer
- WM: Washer / Dryer
- B: Balcony
- T: Terrace

**NOTES**

---



---



---



---



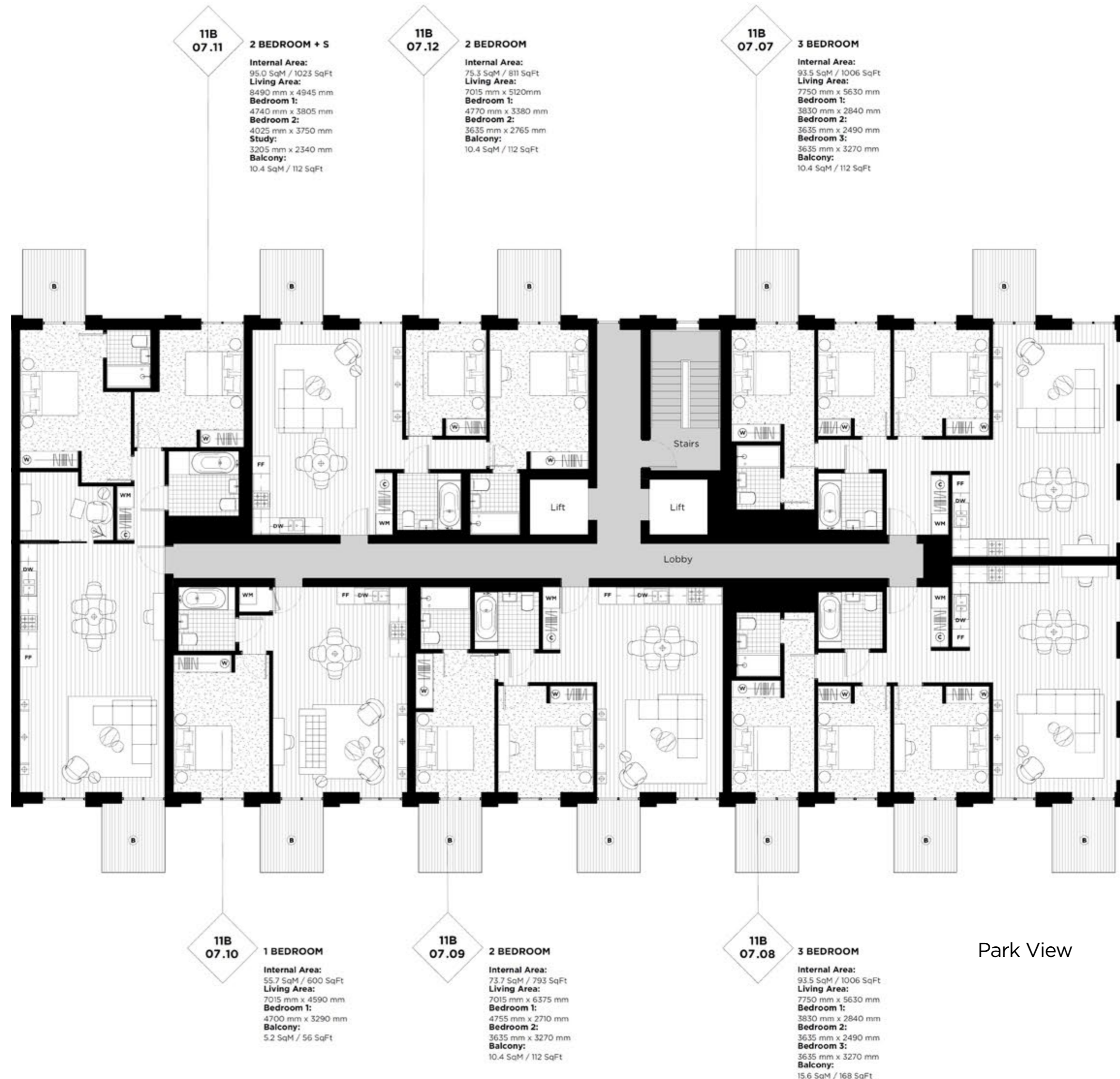
---



**Disclaimer**

This brochure and the information contained in it does not form part of any contract, and while reasonable effort has been made to ensure accuracy, this cannot be guaranteed and no representation or warranty is made in that regard. Apartment designs and layouts are indicative only and may change. The specification of the apartments is the anticipated specification as at the date this brochure was prepared, but may be subject to change in accordance with permitted variances under the apartment sale contracts. Dimensions shown in any text or plan are approximate sizes only and actual sizes may be different once constructed (although it is not anticipated that any apartments will be reduced by more than 5% in size). Computer generated images and photos are indicative only. All sales remain subject to contract. All information regarding prospective commercial or retail tenants represents current intention only, and the final identity of the tenants may change. Furniture shown in Computer Generated Images and photos is not included in sales. Royal Wharf is a marketing name only and will not necessarily form part of the approved postal address. Neither the agents nor any person in their employ has any authority to make or give any representation warranty or guarantee (whether written or oral) in respect of or in relation to the development (or any parts thereof). © 2014 Royal Wharf

07
06
05
04
03
02
01
GF



River View

Park View

**11B 07.11**  
**2 BEDROOM + S**  
Internal Area: 95.0 SqM / 1023 SqFt  
Living Area: 8490 mm x 4945 mm  
Bedroom 1: 4740 mm x 3805 mm  
Bedroom 2: 4025 mm x 3750 mm  
Study: 3205 mm x 2340 mm  
Balcony: 10.4 SqM / 112 SqFt

**11B 07.12**  
**2 BEDROOM**  
Internal Area: 75.3 SqM / 811 SqFt  
Living Area: 7015 mm x 5120mm  
Bedroom 1: 4770 mm x 3380 mm  
Bedroom 2: 3635 mm x 2765 mm  
Balcony: 10.4 SqM / 112 SqFt

**11B 07.07**  
**3 BEDROOM**  
Internal Area: 93.5 SqM / 1006 SqFt  
Living Area: 7750 mm x 5630 mm  
Bedroom 1: 3830 mm x 2840 mm  
Bedroom 2: 3635 mm x 2490 mm  
Bedroom 3: 3635 mm x 3270 mm  
Balcony: 10.4 SqM / 112 SqFt

**11B 07.10**  
**1 BEDROOM**  
Internal Area: 55.7 SqM / 600 SqFt  
Living Area: 7015 mm x 4590 mm  
Bedroom 1: 4700 mm x 3290 mm  
Balcony: 5.2 SqM / 56 SqFt

**11B 07.09**  
**2 BEDROOM**  
Internal Area: 73.7 SqM / 793 SqFt  
Living Area: 7015 mm x 6375 mm  
Bedroom 1: 4755 mm x 2710 mm  
Bedroom 2: 3635 mm x 3270 mm  
Balcony: 10.4 SqM / 112 SqFt

**11B 07.08**  
**3 BEDROOM**  
Internal Area: 93.5 SqM / 1006 SqFt  
Living Area: 7750 mm x 5630 mm  
Bedroom 1: 3830 mm x 2840 mm  
Bedroom 2: 3635 mm x 2490 mm  
Bedroom 3: 3635 mm x 3270 mm  
Balcony: 15.6 SqM / 168 SqFt



ROYAL WHARF

LONDON

Endeavour House

CORE C





**ROYAL WHARF**  
LONDON

**Endeavour House**

CORE

**GF C**

**LEGEND**

- C: Cupboard
- W: Wardrobe
- FF: Fridge Freezer
- WM: Washer / Dryer
- B: Balcony
- T: Terrace

**NOTES**



**Disclaimer**

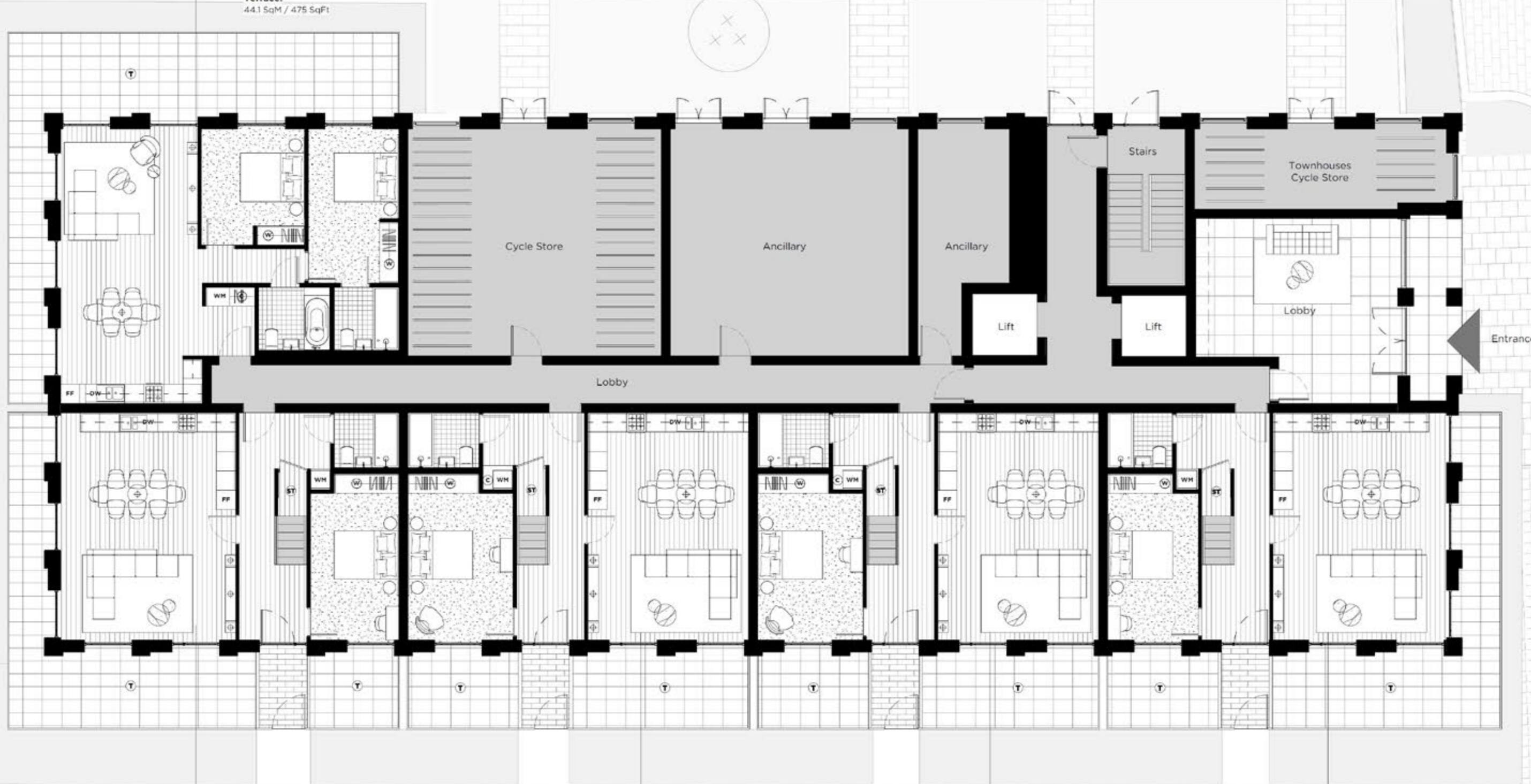
This brochure and the information contained in it does not form part of any contract, and while reasonable effort has been made to ensure accuracy, this cannot be guaranteed and no representation or warranty is made in that regard. Apartment designs and layouts are indicative only and may change. The specification of the apartments is the anticipated specification as at the date this brochure was prepared, but may be subject to change in accordance with permitted variances under the apartment sale contracts. Dimensions shown in any text or plan are approximate sizes only and actual sizes may be different once constructed (although it is not anticipated that any apartments will be reduced by more than 5% in size). Computer generated images and photos are indicative only. All sales remain subject to contract. All information regarding prospective commercial or retail tenants represents current intention only, and the final identity of the tenants may change. Furniture shown in Computer Generated Images and photos is not included in sales. Royal Wharf is a marketing name only and will not necessarily form part of the approved postal address. Neither the agents nor any person in their employ has any authority to make or give any representation warranty or guarantee (whether written or oral) in respect of or in relation to the development (or any parts thereof). © 2014 Royal Wharf

[www.royalwharf.com](http://www.royalwharf.com)

**11C GF.11**

**2 BEDROOM**

**Internal Area:**  
79.7 SqM / 857 SqFt  
**Living Area:**  
4240 mm x 8480 mm  
**Bedroom 1:**  
2800 mm x 4770 mm  
**Bedroom 2:**  
3205 mm x 3585 mm  
**Terrace:**  
44.1 SqM / 475 SqFt



**11C GF.07**

**4 BEDROOM DUPLEX L**

**Internal Area:**  
146.7 SqM / 1579 SqFt  
**Living Area:**  
7020 mm x 5410 mm  
**Bedroom 1:**  
7020 mm x 3340 mm  
**Bedroom 2:**  
5235 mm x 2735 mm  
**Bedroom 3:**  
5135 mm x 2735 mm  
**Bedroom 4:**  
4170 mm x 3370 mm  
**Terrace:**  
39.4 SqM / 424 SqFt

**11C GF.08**

**4 BEDROOM DUPLEX L**

**Internal Area:**  
146.7 SqM / 1579 SqFt  
**Living Area:**  
7020 mm x 4965 mm  
**Bedroom 1:**  
7020 mm x 3250 mm  
**Bedroom 2:**  
4710 mm x 4305 mm  
**Bedroom 3:**  
5135 mm x 3250 mm  
**Bedroom 4:**  
3370 mm x 2760 mm  
**Terrace:**  
25.9 SqM / 279 SqFt

**11C GF.09**

**4 BEDROOM DUPLEX L**

**Internal Area:**  
146.7 SqM / 1579 SqFt  
**Living Area:**  
7020 mm x 4965 mm  
**Bedroom 1:**  
7020 mm x 3250 mm  
**Bedroom 2:**  
4710 mm x 4305 mm  
**Bedroom 3:**  
5135 mm x 3250 mm  
**Bedroom 4:**  
3370 mm x 2760 mm  
**Terrace:**  
25.9 SqM / 279 SqFt

**11C GF.10**

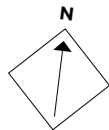
**4 BEDROOM DUPLEX L**

**Internal Area:**  
146.8 SqM / 1580 SqFt  
**Living Area:**  
7020 mm x 5345 mm  
**Bedroom 1:**  
7020 mm x 4240 mm  
**Bedroom 2:**  
5235 mm x 2800 mm  
**Bedroom 3:**  
5135 mm x 2800 mm  
**Bedroom 4:**  
3370 mm x 3205 mm  
**Terrace:**  
40.0 SqM / 431 SqFt

07
06
05
04
03
02
01
GF

River





# ROYAL WHARF

LONDON

## Endeavour House

FLOOR CORE

# 01 C

### LEGEND

- C: Cupboard
- W: Wardrobe
- FF: Fridge Freezer
- WM: Washer / Dryer
- B: Balcony
- T: Terrace

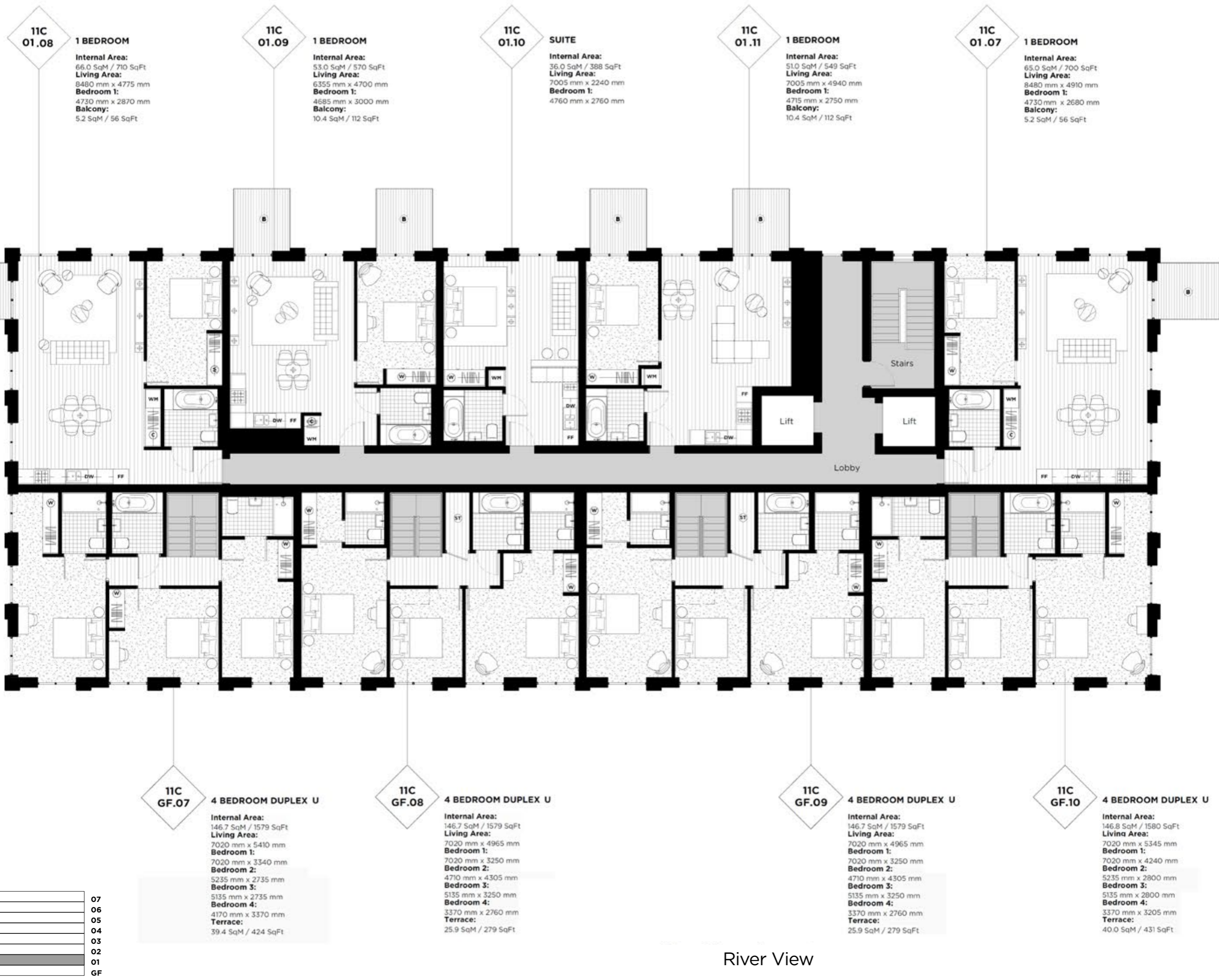
### NOTES



### Disclaimer

This brochure and the information contained in it does not form part of any contract, and while reasonable effort has been made to ensure accuracy, this cannot be guaranteed and no representation or warranty is made in that regard. Apartment designs and layouts are indicative only and may change. The specification of the apartments is the anticipated specification as at the date this brochure was prepared, but may be subject to change in accordance with permitted variances under the apartment sale contracts. Dimensions shown in any text or plan are approximate sizes only and actual sizes may be different once constructed (although it is not anticipated that any apartments will be reduced by more than 5% in size). Computer generated images and photos are indicative only. All sales remain subject to contract. All information regarding prospective commercial or retail tenants represents current intention only, and the final identity of the tenants may change. Furniture shown in Computer Generated Images and photos is not included in sales. Royal Wharf is a marketing name only and will not necessarily form part of the approved postal address. Neither the agents nor any person in their employ has any authority to make or give any representation warranty or guarantee (whether written or oral) in respect of or in relation to the development (or any parts thereof). © 2014 Royal Wharf

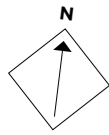
www.royalwharf.com



07
06
05
04
03
02
01
GF

River View





**ROYAL WHARF**  
LONDON

**Endeavour House**

FLOOR CORE

**02 C**

**LEGEND**

- C: Cupboard
- W: Wardrobe
- FF: Fridge Freezer
- WM: Washer / Dryer
- B: Balcony
- T: Terrace

**NOTES**



**Disclaimer**  
This brochure and the information contained in it does not form part of any contract, and while reasonable effort has been made to ensure accuracy, this cannot be guaranteed and no representation or warranty is made in that regard. Apartment designs and layouts are indicative only and may change. The specification of the apartments is the anticipated specification as at the date this brochure was prepared, but may be subject to change in accordance with permitted variances under the apartment sale contracts. Dimensions shown in any text or plan are approximate sizes only and actual sizes may be different once constructed (although it is not anticipated that any apartments will be reduced by more than 5% in size). Computer generated images and photos are indicative only. All sales remain subject to contract. All information regarding prospective commercial or retail tenants represents current intention only, and the final identity of the tenants may change. Furniture shown in Computer Generated Images and photos is not included in sales. Royal Wharf is a marketing name only and will not necessarily form part of the approved postal address. Neither the agents nor any person in their employ has any authority to make or give any representation warranty or guarantee (whether written or oral) in respect of or in relation to the development (or any parts thereof). © 2014 Royal Wharf



**11C 02.17**  
**3 BEDROOM**  
Internal Area:  
102.0 SqM / 1098 SqFt  
Living Area:  
7900 mm x 5025 mm  
Bedroom 1:  
4925 mm x 4240 mm  
Bedroom 2:  
4240 mm x 2750 mm  
Bedroom 3:  
4020 mm x 3405 mm  
Balcony:  
10.4 SqM / 112 SqFt

**11C 02.18**  
**1 BEDROOM**  
Internal Area:  
53.0 SqM / 570 SqFt  
Living Area:  
6355 mm x 4860 mm  
Bedroom 1:  
4685 mm x 2850 mm  
Balcony:  
10.4 SqM / 112 SqFt

**11C 02.19**  
**SUITE**  
Internal Area:  
36.0 SqM / 388 SqFt  
Living Area:  
7005 mm x 2240 mm  
Bedroom 1:  
4760 mm x 2760 mm

**11C 02.20**  
**1 BEDROOM**  
Internal Area:  
51.0 SqM / 549 SqFt  
Living Area:  
7005 mm x 4940 mm  
Bedroom 1:  
4715 mm x 2750 mm  
Balcony:  
10.4 SqM / 112 SqFt

**11C 02.13**  
**3 BEDROOM**  
Internal Area:  
102.0 SqM / 1098 SqFt  
Living Area:  
7900 mm x 5075 mm  
Bedroom 1:  
4935 mm x 4155 mm  
Bedroom 2:  
4155 mm x 2735 mm  
Bedroom 3:  
4035 mm x 3435 mm  
Balcony:  
10.4 SqM / 112 SqFt

**11C 02.16**  
**2 BEDROOM**  
Internal Area:  
74.0 SqM / 797 SqFt  
Living Area:  
7020 mm x 6215 mm  
Bedroom 1:  
4785 mm x 2850 mm  
Bedroom 2:  
3640 mm x 3185 mm  
Balcony:  
10.4 SqM / 112 SqFt

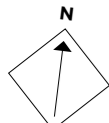
**11C 02.15**  
**2 BEDROOM**  
Internal Area:  
74.0 SqM / 797 SqFt  
Living Area:  
7020 mm x 6215 mm  
Bedroom 1:  
4785 mm x 2850 mm  
Bedroom 2:  
3640 mm x 3185 mm  
Balcony:  
10.4 SqM / 112 SqFt

**11C 02.14**  
**2 BEDROOM**  
Internal Area:  
74.0 SqM / 797 SqFt  
Living Area:  
7020 mm x 6215 mm  
Bedroom 1:  
4785 mm x 2850 mm  
Bedroom 2:  
3640 mm x 3185 mm  
Balcony:  
10.4 SqM / 112 SqFt

River View

07
06
05
04
03
02
01
GF





**ROYAL WHARF**  
LONDON

**Endeavour House**

FLOOR CORE

**03 C**

**LEGEND**

- C: Cupboard
- W: Wardrobe
- FF: Fridge Freezer
- WM: Washer / Dryer
- B: Balcony
- T: Terrace

**NOTES**



**Disclaimer**  
This brochure and the information contained in it does not form part of any contract, and while reasonable effort has been made to ensure accuracy, this cannot be guaranteed and no representation or warranty is made in that regard. Apartment designs and layouts are indicative only and may change. The specification of the apartments is the anticipated specification as at the date this brochure was prepared, but may be subject to change in accordance with permitted variances under the apartment sale contracts. Dimensions shown in any text or plan are approximate sizes only and actual sizes may be different once constructed (although it is not anticipated that any apartments will be reduced by more than 5% in size). Computer generated images and photos are indicative only. All sales remain subject to contract. All information regarding prospective commercial or retail tenants represents current intention only, and the final identity of the tenants may change. Furniture shown in Computer Generated Images and photos is not included in sales. Royal Wharf is a marketing name only and will not necessarily form part of the approved postal address. Neither the agents nor any person in their employ has any authority to make or give any representation warranty or guarantee (whether written or oral) in respect of or in relation to the development (or any parts thereof). © 2014 Royal Wharf



**11C 03.17**  
**3 BEDROOM**  
Internal Area: 102.0 SqM / 1098 SqFt  
Living Area: 7900 mm x 5025 mm  
Bedroom 1: 4925 mm x 4240 mm  
Bedroom 2: 4240 mm x 2750 mm  
Bedroom 3: 4020 mm x 3405 mm  
Balcony: 10.4 SqM / 112 SqFt

**11C 03.18**  
**1 BEDROOM**  
Internal Area: 53.0 SqM / 570 SqFt  
Living Area: 6355 mm x 4860 mm  
Bedroom 1: 4685 mm x 2850 mm  
Balcony: 10.4 SqM / 112 SqFt

**11C 03.19**  
**SUITE**  
Internal Area: 36.0 SqM / 388 SqFt  
Living Area: 7005 mm x 2240 mm  
Bedroom 1: 4760 mm x 2760 mm

**11C 03.20**  
**1 BEDROOM**  
Internal Area: 51.0 SqM / 549 SqFt  
Living Area: 7005 mm x 4940 mm  
Bedroom 1: 4715 mm x 2750 mm  
Balcony: 10.4 SqM / 112 SqFt

**11C 03.13**  
**3 BEDROOM**  
Internal Area: 102.0 SqM / 1098 SqFt  
Living Area: 7900 mm x 5075 mm  
Bedroom 1: 4935 mm x 4155 mm  
Bedroom 2: 4155 mm x 2735 mm  
Bedroom 3: 4035 mm x 3435 mm  
Balcony: 10.4 SqM / 112 SqFt

**11C 03.16**  
**2 BEDROOM**  
Internal Area: 74.0 SqM / 797 SqFt  
Living Area: 7020 mm x 6215 mm  
Bedroom 1: 4785 mm x 2850 mm  
Bedroom 2: 3640 mm x 3185 mm  
Balcony: 10.4 SqM / 112 SqFt

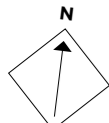
**11C 03.15**  
**2 BEDROOM**  
Internal Area: 74.0 SqM / 797 SqFt  
Living Area: 7020 mm x 6215 mm  
Bedroom 1: 4785 mm x 2850 mm  
Bedroom 2: 3640 mm x 3185 mm  
Balcony: 10.4 SqM / 112 SqFt

**11C 03.14**  
**2 BEDROOM**  
Internal Area: 74.0 SqM / 797 SqFt  
Living Area: 7020 mm x 6215 mm  
Bedroom 1: 4785 mm x 2850 mm  
Bedroom 2: 3640 mm x 3185 mm  
Balcony: 10.4 SqM / 112 SqFt

River View

07
06
05
04
03
02
01
GF





# ROYAL WHARF

LONDON

## Endeavour House

FLOOR CORE

# 04 C

### LEGEND

- C: Cupboard
- W: Wardrobe
- FF: Fridge Freezer
- WM: Washer / Dryer
- B: Balcony
- T: Terrace

### NOTES

---



---



---



---



---



---



### Disclaimer

This brochure and the information contained in it does not form part of any contract, and while reasonable effort has been made to ensure accuracy, this cannot be guaranteed and no representation or warranty is made in that regard. Apartment designs and layouts are indicative only and may change. The specification of the apartments is the anticipated specification as at the date this brochure was prepared, but may be subject to change in accordance with permitted variances under the apartment sale contracts. Dimensions shown in any text or plan are approximate sizes only and actual sizes may be different once constructed (although it is not anticipated that any apartments will be reduced by more than 5% in size). Computer generated images and photos are indicative only. All sales remain subject to contract. All information regarding prospective commercial or retail tenants represents current intention only, and the final identity of the tenants may change. Furniture shown in Computer Generated Images and photos is not included in sales. Royal Wharf is a marketing name only and will not necessarily form part of the approved postal address. Neither the agents nor any person in their employ has any authority to make or give any representation warranty or guarantee (whether written or oral) in respect of or in relation to the development (or any parts thereof). © 2014 Royal Wharf

www.royalwharf.com

11C  
04.17

**3 BEDROOM**  
Internal Area:  
102.0 SqM / 1098 SqFt  
Living Area:  
7900 mm x 5025 mm  
Bedroom 1:  
4925 mm x 4240 mm  
Bedroom 2:  
4240 mm x 2750 mm  
Bedroom 3:  
4020 mm x 3405 mm  
Balcony:  
10.4 SqM / 112 SqFt

11C  
04.18

**1 BEDROOM**  
Internal Area:  
53.0 SqM / 570 SqFt  
Living Area:  
6355 mm x 4860 mm  
Bedroom 1:  
4685 mm x 2850 mm  
Balcony:  
10.4 SqM / 112 SqFt

11C  
04.19

**SUITE**  
Internal Area:  
36.0 SqM / 388 SqFt  
Living Area:  
7005 mm x 2240 mm  
Bedroom 1:  
4760 mm x 2760 mm

11C  
04.20

**1 BEDROOM**  
Internal Area:  
51.0 SqM / 549 SqFt  
Living Area:  
7005 mm x 4940 mm  
Bedroom 1:  
4715 mm x 2750 mm  
Balcony:  
10.4 SqM / 112 SqFt

11C  
04.13

**3 BEDROOM**  
Internal Area:  
102.0 SqM / 1098 SqFt  
Living Area:  
7900 mm x 5075 mm  
Bedroom 1:  
4935 mm x 4155 mm  
Bedroom 2:  
4155 mm x 2735 mm  
Bedroom 3:  
4035 mm x 3435 mm  
Balcony:  
10.4 SqM / 112 SqFt

11C  
04.16

**2 BEDROOM**  
Internal Area:  
74.0 SqM / 797 SqFt  
Living Area:  
7020 mm x 6215 mm  
Bedroom 1:  
4785 mm x 2850 mm  
Bedroom 2:  
3640 mm x 3185 mm  
Balcony:  
10.4 SqM / 112 SqFt

11C  
04.15

**2 BEDROOM**  
Internal Area:  
74.0 SqM / 797 SqFt  
Living Area:  
7020 mm x 6215 mm  
Bedroom 1:  
4785 mm x 2850 mm  
Bedroom 2:  
3640 mm x 3185 mm  
Balcony:  
10.4 SqM / 112 SqFt

11C  
04.14

**2 BEDROOM**  
Internal Area:  
74.0 SqM / 797 SqFt  
Living Area:  
7020 mm x 6215 mm  
Bedroom 1:  
4785 mm x 2850 mm  
Bedroom 2:  
3640 mm x 3185 mm  
Balcony:  
10.4 SqM / 112 SqFt

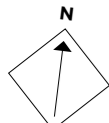
11C  
04.13

**3 BEDROOM**  
Internal Area:  
102.0 SqM / 1098 SqFt  
Living Area:  
7900 mm x 5075 mm  
Bedroom 1:  
4935 mm x 4155 mm  
Bedroom 2:  
4155 mm x 2735 mm  
Bedroom 3:  
4035 mm x 3435 mm  
Balcony:  
10.4 SqM / 112 SqFt

River View

07
06
05
04
03
02
01
GF





# ROYAL WHARF

LONDON

## Endeavour House

FLOOR CORE

# 05 C

### LEGEND

- C: Cupboard
- W: Wardrobe
- FF: Fridge Freezer
- WM: Washer / Dryer
- B: Balcony
- T: Terrace

### NOTES

---



---



---



---



---



---



### Disclaimer

This brochure and the information contained in it does not form part of any contract, and while reasonable effort has been made to ensure accuracy, this cannot be guaranteed and no representation or warranty is made in that regard. Apartment designs and layouts are indicative only and may change. The specification of the apartments is the anticipated specification as at the date this brochure was prepared, but may be subject to change in accordance with permitted variances under the apartment sale contracts. Dimensions shown in any text or plan are approximate sizes only and actual sizes may be different once constructed (although it is not anticipated that any apartments will be reduced by more than 5% in size). Computer generated images and photos are indicative only. All sales remain subject to contract. All information regarding prospective commercial or retail tenants represents current intention only, and the final identity of the tenants may change. Furniture shown in Computer Generated Images and photos is not included in sales. Royal Wharf is a marketing name only and will not necessarily form part of the approved postal address. Neither the agents nor any person in their employ has any authority to make or give any representation warranty or guarantee (whether written or oral) in respect of or in relation to the development (or any parts thereof). © 2014 Royal Wharf

[www.royalwharf.com](http://www.royalwharf.com)

**11C 05.17**  
**3 BEDROOM**  
 Internal Area:  
 102.0 SqM / 1098 SqFt  
 Living Area:  
 7900 mm x 5025 mm  
**Bedroom 1:**  
 4925 mm x 4240 mm  
**Bedroom 2:**  
 4240 mm x 2750 mm  
**Bedroom 3:**  
 4020 mm x 3405 mm  
**Balcony:**  
 10.4 SqM / 112 SqFt

**11C 05.18**  
**1 BEDROOM**  
 Internal Area:  
 53.0 SqM / 570 SqFt  
 Living Area:  
 6355 mm x 4860 mm  
**Bedroom 1:**  
 4685 mm x 2850 mm  
**Balcony:**  
 10.4 SqM / 112 SqFt

**11C 05.19**  
**SUITE**  
 Internal Area:  
 36.0 SqM / 388 SqFt  
 Living Area:  
 7005 mm x 2240 mm  
**Bedroom 1:**  
 4760 mm x 2760 mm

**11C 05.20**  
**1 BEDROOM**  
 Internal Area:  
 51.0 SqM / 549 SqFt  
 Living Area:  
 7005 mm x 4940 mm  
**Bedroom 1:**  
 4715 mm x 2750 mm  
**Balcony:**  
 10.4 SqM / 112 SqFt

**11C 05.13**  
**3 BEDROOM**  
 Internal Area:  
 102.0 SqM / 1098 SqFt  
 Living Area:  
 7900 mm x 5075 mm  
**Bedroom 1:**  
 4935 mm x 4155 mm  
**Bedroom 2:**  
 4155 mm x 2735 mm  
**Bedroom 3:**  
 4035 mm x 3435 mm  
**Balcony:**  
 10.4 SqM / 112 SqFt

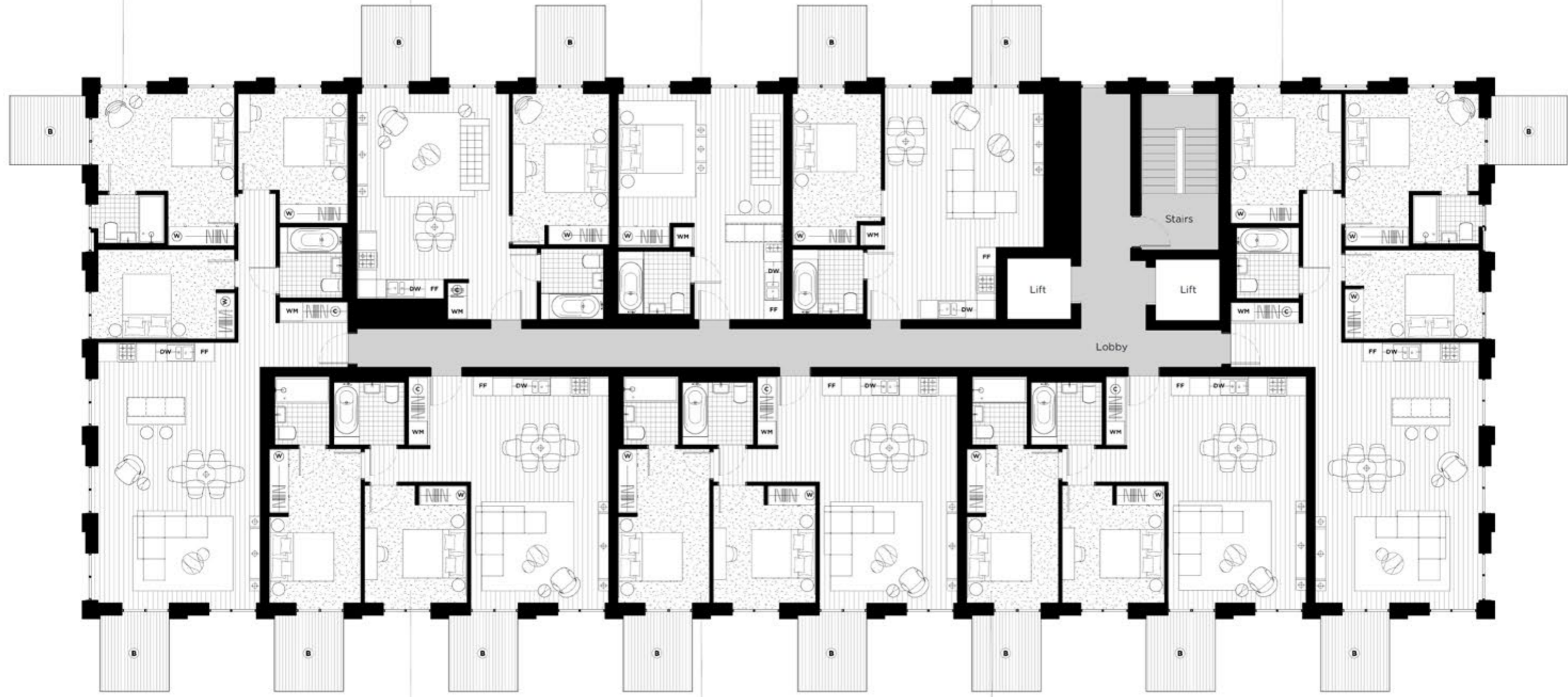
**11C 05.16**  
**2 BEDROOM**  
 Internal Area:  
 74.0 SqM / 797 SqFt  
 Living Area:  
 7020 mm x 6215 mm  
**Bedroom 1:**  
 4785 mm x 2850 mm  
**Bedroom 2:**  
 3640 mm x 3185 mm  
**Balcony:**  
 10.4 SqM / 112 SqFt

**11C 05.15**  
**2 BEDROOM**  
 Internal Area:  
 74.0 SqM / 797 SqFt  
 Living Area:  
 7020 mm x 6215 mm  
**Bedroom 1:**  
 4785 mm x 2850 mm  
**Bedroom 2:**  
 3640 mm x 3185 mm  
**Balcony:**  
 10.4 SqM / 112 SqFt

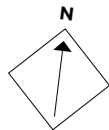
**11C 05.14**  
**2 BEDROOM**  
 Internal Area:  
 74.0 SqM / 797 SqFt  
 Living Area:  
 7020 mm x 6215 mm  
**Bedroom 1:**  
 4785 mm x 2850 mm  
**Bedroom 2:**  
 3640 mm x 3185 mm  
**Balcony:**  
 10.4 SqM / 112 SqFt

River View

07
06
05
04
03
02
01
GF







# ROYAL WHARF

LONDON

## Endeavour House

FLOOR CORE

# 06 C

### LEGEND

- C: Cupboard
- W: Wardrobe
- FF: Fridge Freezer
- WM: Washer / Dryer
- B: Balcony
- T: Terrace

### NOTES

- \_\_\_\_\_
- \_\_\_\_\_
- \_\_\_\_\_
- \_\_\_\_\_
- \_\_\_\_\_

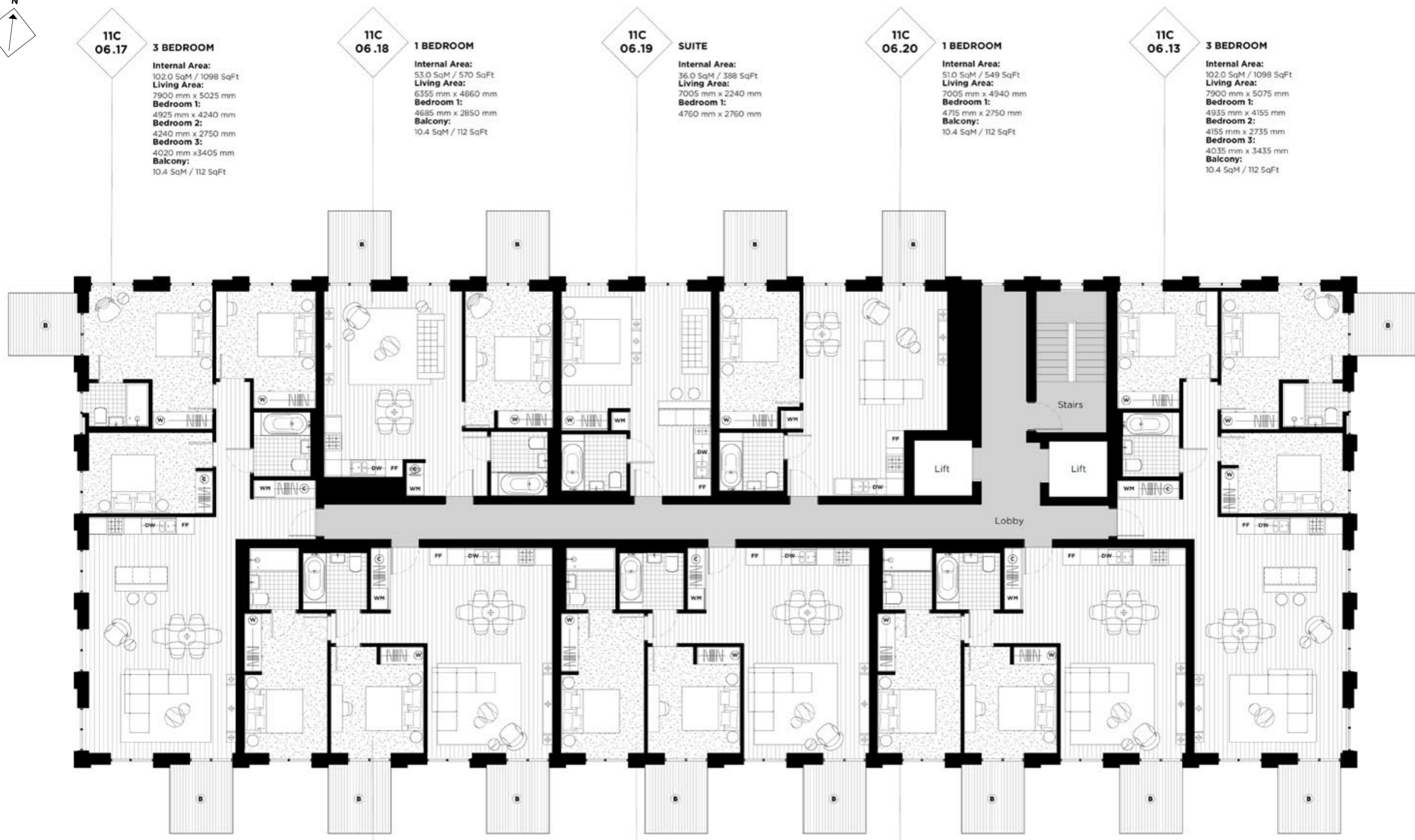


### Disclaimer

This brochure and the information contained in it does not form part of any contract, and while reasonable effort has been made to ensure accuracy, this cannot be guaranteed and no representation or warranty is made in that regard. Apartment designs and layouts are indicative only and may change. The specification of the apartments is the anticipated specification as at the date this brochure was prepared, but may be subject to change in accordance with permitted variances under the apartment sale contracts. Dimensions shown in any text or plan are approximate sizes only and actual sizes may be different once constructed (although it is not anticipated that any apartments will be reduced by more than 5% in size). Computer generated images and photos are indicative only. All sales remain subject to contract. All information regarding prospective commercial or retail tenants represents current intention only, and the final identity of the tenants may change. Furniture shown in Computer Generated Images and photos is not included in sales. Royal Wharf is a marketing name only and will not necessarily form part of the approved postal address. Neither the agents nor any person in their employ has any authority to make or give any representation warranty or guarantee (whether written or oral) in respect of or in relation to the development (or any parts thereof). © 2014 Royal Wharf

www.royalwharf.com

River View



**11C 06.17**  
**3 BEDROOM**  
 Internal Area: 102.0 SqM / 1098 SqFt  
 Living Area: 7900 mm x 5025 mm  
 Bedroom 1: 4925 mm x 4240 mm  
 Bedroom 2: 4240 mm x 2750 mm  
 Bedroom 3: 4020 mm x 3405 mm  
 Balcony: 10.4 SqM / 112 SqFt

**11C 06.18**  
**1 BEDROOM**  
 Internal Area: 53.0 SqM / 570 SqFt  
 Living Area: 6355 mm x 4860 mm  
 Bedroom 1: 4685 mm x 2850 mm  
 Balcony: 10.4 SqM / 112 SqFt

**11C 06.19**  
**SUITE**  
 Internal Area: 36.0 SqM / 388 SqFt  
 Living Area: 7005 mm x 2240 mm  
 Bedroom 1: 4760 mm x 2760 mm

**11C 06.20**  
**1 BEDROOM**  
 Internal Area: 51.0 SqM / 549 SqFt  
 Living Area: 7005 mm x 4940 mm  
 Bedroom 1: 4715 mm x 2750 mm  
 Balcony: 10.4 SqM / 112 SqFt

**11C 06.13**  
**3 BEDROOM**  
 Internal Area: 102.0 SqM / 1098 SqFt  
 Living Area: 7900 mm x 5075 mm  
 Bedroom 1: 4935 mm x 4155 mm  
 Bedroom 2: 4155 mm x 2735 mm  
 Bedroom 3: 4035 mm x 3435 mm  
 Balcony: 10.4 SqM / 112 SqFt

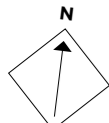
**11C 06.16**  
**2 BEDROOM**  
 Internal Area: 74.0 SqM / 797 SqFt  
 Living Area: 7020 mm x 6215 mm  
 Bedroom 1: 4785 mm x 2850 mm  
 Bedroom 2: 3640 mm x 3185 mm  
 Balcony: 10.4 SqM / 112 SqFt

**11C 06.15**  
**2 BEDROOM**  
 Internal Area: 74.0 SqM / 797 SqFt  
 Living Area: 7020 mm x 6215 mm  
 Bedroom 1: 4785 mm x 2850 mm  
 Bedroom 2: 3640 mm x 3185 mm  
 Balcony: 10.4 SqM / 112 SqFt

**11C 06.14**  
**2 BEDROOM**  
 Internal Area: 74.0 SqM / 797 SqFt  
 Living Area: 7020 mm x 6215 mm  
 Bedroom 1: 4785 mm x 2850 mm  
 Bedroom 2: 3640 mm x 3185 mm  
 Balcony: 10.4 SqM / 112 SqFt

07
06
05
04
03
02
01
GF





# ROYAL WHARF

LONDON

## Endeavour House

FLOOR CORE

# 07 C

### LEGEND

- C: Cupboard
- W: Wardrobe
- FF: Fridge Freezer
- WM: Washer / Dryer
- B: Balcony
- T: Terrace

### NOTES

---



---



---



---



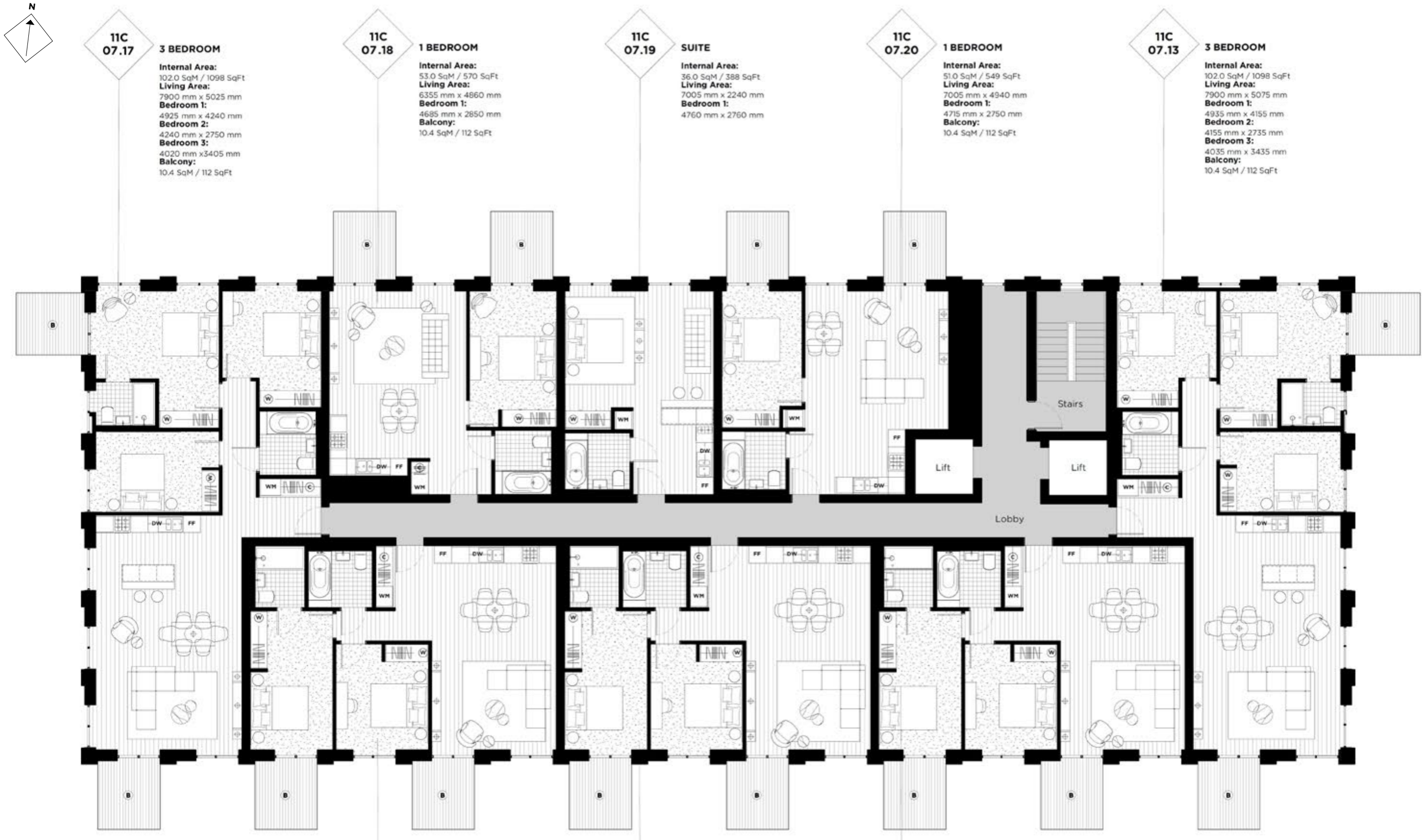
---



### Disclaimer

This brochure and the information contained in it does not form part of any contract, and while reasonable effort has been made to ensure accuracy, this cannot be guaranteed and no representation or warranty is made in that regard. Apartment designs and layouts are indicative only and may change. The specification of the apartments is the anticipated specification as at the date this brochure was prepared, but may be subject to change in accordance with permitted variances under the apartment sale contracts. Dimensions shown in any text or plan are approximate sizes only and actual sizes may be different once constructed (although it is not anticipated that any apartments will be reduced by more than 5% in size). Computer generated images and photos are indicative only. All sales remain subject to contract. All information regarding prospective commercial or retail tenants represents current intention only, and the final identity of the tenants may change. Furniture shown in Computer Generated Images and photos is not included in sales. Royal Wharf is a marketing name only and will not necessarily form part of the approved postal address. Neither the agents nor any person in their employ has any authority to make or give any representation warranty or guarantee (whether written or oral) in respect of or in relation to the development (or any parts thereof). © 2014 Royal Wharf

[www.royalwharf.com](http://www.royalwharf.com)



River View

07
06
05
04
03
02
01
GF

**11C 07.17**  
**3 BEDROOM**  
 Internal Area:  
 102.0 SqM / 1098 SqFt  
 Living Area:  
 7900 mm x 5025 mm  
 Bedroom 1:  
 4925 mm x 4240 mm  
 Bedroom 2:  
 4240 mm x 2750 mm  
 Bedroom 3:  
 4020 mm x 3405 mm  
 Balcony:  
 10.4 SqM / 112 SqFt

**11C 07.18**  
**1 BEDROOM**  
 Internal Area:  
 53.0 SqM / 570 SqFt  
 Living Area:  
 6355 mm x 4860 mm  
 Bedroom 1:  
 4685 mm x 2850 mm  
 Balcony:  
 10.4 SqM / 112 SqFt

**11C 07.19**  
**SUITE**  
 Internal Area:  
 36.0 SqM / 388 SqFt  
 Living Area:  
 7005 mm x 2240 mm  
 Bedroom 1:  
 4760 mm x 2760 mm

**11C 07.20**  
**1 BEDROOM**  
 Internal Area:  
 51.0 SqM / 549 SqFt  
 Living Area:  
 7005 mm x 4940 mm  
 Bedroom 1:  
 4715 mm x 2750 mm  
 Balcony:  
 10.4 SqM / 112 SqFt

**11C 07.13**  
**3 BEDROOM**  
 Internal Area:  
 102.0 SqM / 1098 SqFt  
 Living Area:  
 7900 mm x 5075 mm  
 Bedroom 1:  
 4935 mm x 4155 mm  
 Bedroom 2:  
 4155 mm x 2735 mm  
 Bedroom 3:  
 4035 mm x 3435 mm  
 Balcony:  
 10.4 SqM / 112 SqFt

**11C 07.16**  
**2 BEDROOM**  
 Internal Area:  
 74.0 SqM / 797 SqFt  
 Living Area:  
 7020 mm x 6215 mm  
 Bedroom 1:  
 4785 mm x 2850 mm  
 Bedroom 2:  
 3640 mm x 3185 mm  
 Balcony:  
 10.4 SqM / 112 SqFt

**11C 07.15**  
**2 BEDROOM**  
 Internal Area:  
 74.0 SqM / 797 SqFt  
 Living Area:  
 7020 mm x 6215 mm  
 Bedroom 1:  
 4785 mm x 2850 mm  
 Bedroom 2:  
 3640 mm x 3185 mm  
 Balcony:  
 10.4 SqM / 112 SqFt

**11C 07.14**  
**2 BEDROOM**  
 Internal Area:  
 74.0 SqM / 797 SqFt  
 Living Area:  
 7020 mm x 6215 mm  
 Bedroom 1:  
 4785 mm x 2850 mm  
 Bedroom 2:  
 3640 mm x 3185 mm  
 Balcony:  
 10.4 SqM / 112 SqFt



# Specification



## Main structure

Reinforced concrete frame on reinforced concrete piled foundations.

## Building envelope

External wall with quality brick finish and pre-cast cladding.

## Floors

Reinforced concrete slab with appropriate floor finishes (see flooring).

## Roof

High performance membrane with bio roofs (subject to plot).

## Windows

Double glazed windows and doors including opening lights (subject to plot and apartment) with a durable finish.

## Stairs

In-situ or pre-cast concrete stairs with steel balustrades in common areas.

## Walls

Party walls constructed from metal studwork finished on both sides with sound resistant plasterboard and acoustic insulation between, or structural concrete faced with plasterboard on both sides. Internal walls constructed from metal studwork or modern timber panels with plasterboard on each side and acoustic insulation where detailed.

## Balconies

Where applicable painted steel projecting balconies with painted steel vertical rails and handrails or Glass protection panels (subject to plot). Juliette balconies will be formed from either painted vertical steel bars or glass (subject to apartment). All projecting balconies have deck finish.

## Ceilings

Suspended flat plasterboard ceilings throughout.

## Flooring

Engineered oak floor boarding to hall, living area and kitchen. Matt grey ceramic floor tiles to bathrooms, ensuites and shower rooms. Fitted carpets to bedrooms.

## Decoration

All internal walls painted with warm white washable emulsion, skirting and door frames painted with warm white eggshell paint finishes.

## Kitchens:

Composite stone worktops fitted with under-mounted stainless steel sink with contemporary deck mounted stainless steel taps. Feature tiled splash-backs. Integrated appliances, comprising combination stainless steel multifunction electric oven, touch control ceramic hob and integrated extractor hood, fridge freezer and dishwasher. Combined washing machine/ tumble dryer located in separate utility cupboard where appropriate. Fitted modular design kitchen units in high gloss finish.

## Wardrobes

Integrated wardrobes fitted in all bedrooms (where shown on plans) with custom designed painted feature doors.

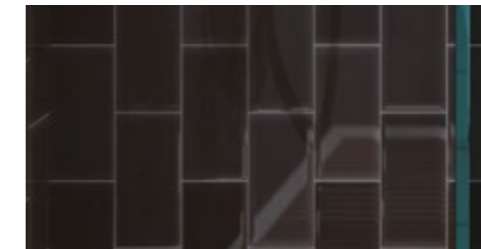
## Bathrooms

Fitted with white enamel bath with chrome finish mixer. Contemporary wall mounted shower and glass bath screen. White ceramic close coupled floor mounted WC. White ceramic wash basin, with chrome lever mixer tap. Bespoke wall mounted mirror finished cabinet in all bathrooms. Chrome finish heated towel rail. Ceramic tiles to bathroom with feature tiles to shower / bath area. Matt finish floor tiles.

## Shower Rooms

Specification as bathroom but fitted with white shower tray, thermostatic wall mounted shower with glass shower screen.

# Fixtures And Fittings



## Kitchen

### Oven

Product: Single electric fan-forced oven.  
Location: All apartment kitchens.

### Hob

Product: Electric hob with stainless steel and black finish.  
Location: All apartment kitchens.

### Integrated Dishwasher

Product: Fully integrated dishwasher.  
Location: All apartment kitchens.

### Integrated Fridge Freezer

Product: Fully integrated fridge freezer.  
Location: All apartment kitchens.

### Deck Mounted Kitchen Sink Mixer

Product: Contemporary style deck mounted sink mixer tap.  
Finish: Chrome finish.  
Location: Deck mounted to all apartment kitchen work tops.

### Kitchen Extractor

Product: Concealed extractor fan.  
Finish: Stainless steel.  
Location: All apartment kitchens.

### Kitchen Sink

Product: Stainless steel undermounted sink.  
Finish: Stainless steel.  
Location: All apartment kitchens.

### Washing Machine

Product: Washer Dryer.  
Location: All apartment utility cupboards.

## Bathroom

### Deck Mounted Basin Mixer

Product: Contemporary style deck mounted taps.  
Finish: Polished chrome.  
Location: All apartment bathrooms.

### Bath Mixer

Product: Contemporary style bath mixes.  
Finish: Polished chrome.  
Location: 1, 2 and 3 bedroom apartment bathrooms.

### Wall Mounted Shower Set

Product: Contemporary style shower set.  
Finish: Polished chrome.  
Location: All apartment bathrooms.

### Heated Towel Rail

Product: Contemporary style heated ladder towel rail.  
Finish: Polished chrome.  
Location: All apartment bathrooms.

### WC

Product: Close coupled floor mounted WC.  
Finish: Glazed sanitary glaze porcelain.  
Location: All apartment bathrooms.

### Washbasin

Product: Wall hung white ceramic washbasin.  
Finish: Glazed white.  
Location: All apartment bathrooms.

### Integrated Bath

Product name: Built in bath.  
Finish: White.  
Location: 1, 2 and 3 bedroom bathroom apartments.

### Shower Tray

Product name: High Quality solid cast or acrylic shower tray.  
Location: All ensuite and suite shower rooms.

### Wall Mounted Cabinet

Product: Bespoke mirrored wall mounted cabinet. Finish: Mirrored.  
Location: All apartment bathrooms.

## Heating and Hot Water Apartments

Metered system provides heating and hot water from the development's central plant. Centralised wet heating system throughout.

## Electrics

Energy efficient lighting in kitchen, hall, bathroom, shower room and ensuite, where appropriate. Switch plates and sockets in accordance with IEE regulations. TV / FM and telephone points for broadband internet access in living room and master bedroom; communal satellite dish with connection points in living room and master bedroom. (Purchasers are responsible for their own connections and related charges for cost of services). Smoke / heat detectors fitted as standard.

## Management and Security

Management and security services located in the central estate management office. Video entry phone system connected to main entrance door. External CCTV system provided.

## Parking

Limited car parking at extra cost and subject to availability.

## Elevators

Elevators serve all floors.

## External

Ground-level areas laid out and finished with a combination of architect-designed hard and soft landscaping with feature lighting.



**Notes**

♦♦♦♦

**Notes**

♦♦♦♦



