

THE  
FLORENCE  
RESIDENCES 悦湖苑



LIFESTYLE OF A  
**CLUB** LUXURY OF A  
**CONDO**



## CENTRAL. VIBRANT. CHARMING

Live in the heart of Kovan, a desirable enclave rich in connectivity, surrounded by amenities both old and new, that takes you to any part of the city within minutes. Standing at 18-storeys and comprised of 9 blocks, The Florence Residences is more than just a sight to behold, but a home that brings you closer to everything that matters the most.

**ARRIVAL CLUB**

- 1 Arrival Plaza
- 2 Arrival Waterfall
- 3 Arrival Reflective Pool
- 4 24/7 Parcel Collection Corner
- 5 Arrival Water Court
- 6 Conciierge
- 7 Lobby Reflective Pool
- 8 Lobby Garden

**THE CLUBHOUSE**

- 9 Changing Room
- 10 Steam Room
- 11 Dining Suite
- 12 Multipurpose Suite
- 13 Theatre with Karaoke (L2)
- 14 Laundrette
- 15 Palm Courtyard
- 16 Gym (L2)
- 17 Jamming Studio (L2)
- 18 Reading Room / Library (L2)
- 19 Verandah Dining

**ISLAND CLUB**

- 20 80m Island Lap Pool
- 21 Island Lounge Pool
- 22 Coastal Pool
- 23 Island Pool Deck
- 24 Sun Bathing Lawn
- 25 Elderly Fitness
- 26 Island Look-out Deck
- 27 Day Bed Deck
- 28 Sand Lounge
- 29 Waterwall
- 30 Ripple Deck
- 31 Ripple Bay
- 32 Mystery Island
- 33 Discovery Island
- 34 Palm Island

**WELLNESS CLUB**

- 35 Tai-chi Lawn
- 36 Stepping Stone
- 37 Chill-out Swing
- 38 Chill-out Cabana
- 39 Water Swing
- 40 Yoga Lawn
- 41 Wellness Salt Pool (0.9m Deep)
- 42 Wellness Salt Pool (1.2m Deep)
- 43 Wellness Pool Deck

**HYDROTHERAPY CLUB**

- 44 Hydrotherapy Cove Pool
- 45 Jacuzzi Cove
- 46 Hydrotherapy Pods with Water Cascade
- 47 Bubble Cove
- 48 Aqua Bike
- 49 Aqua Moonwalker
- 50 Aqua Incline Treadmill
- 51 Aqua Treadmill
- 52 Onsen
- 53 Hot Plunge
- 54 Cold Plunge
- 55 Hydrotherapy Pavilion
- 56 Hydrotherapy Pool Deck

**KIDS' PLAY CLUB**

- 57 Adventure Island
- 58 Tree Hammock
- 59 Kids' Play
- 60 Toddlers' Play
- 61 Inclusive Play
- 62 Kids' Club Pavilion
- 63 Kids' Outdoor Fitness
- 64 Trampoline
- 65 Meandering Deck

**KIDS' AQUA CLUB**

- 66 Meandering Pool
- 67 Aquaplay Water Mounds
- 68 Aquaplay Water Jets
- 69 Aquaplay Water Scouts
- 70 Aquaplay Water Curtain
- 71 Water-Tipping Bucket
- 72 Tropical Bridge
- 73 Water Basketball
- 74 Kids' Pool
- 75 Toddlers' Pool
- 76 Water Splash (Shallow)
- 77 Water Slide (Shallow)

**YOUTH & FITNESS CLUB**

- 78 Tennis Court
- 79 Multipurpose Court
- 80 Boulderling Wall
- 81 Outdoor Movie Screening
- 82 Punch Bag Corner
- 83 Sparring Ring Pavilion
- 84 Amphitheatre
- 85 Youth Games Corner
- 86 Outdoor Fitness
- 87 Pool Table with Dart Board Pavilion

**GOURMET CLUB**

- 88 Italian Pavilion
- 89 Chinese Tea Pavilion
- 90 Wine & Chill Pavilion
- 91 Oriental Gourmet Pavilion
- 92 Japanese Pavilion
- 93 Outback Grill
- 94 Garden BBQ

**TRANQUILITY CLUB**

- 95 Garden Hammock
- 96 Rock Cascade Reflective Pool
- 97 Summer Alfresco Lawn
- 98 Summer Picnic Lawn
- 99 Giant Outdoor Chess
- 100 Meditative Walk
- 101 Fern Garden
- 102 Tropical Garden
- 103 Sensory Spa Pavilion
- 104 Meditative Garden
- 105 Firefly Garden
- 106 Reed Garden
- 107 Lily Pond
- 108 Fishing Eco Pond
- 109 Nature Garden Trail
- 110 Reading Pavilion
- 111 Bamboo Garden
- 112 Forest Swing
- 113 Reflexology Path

**PASSION CLUB**

- 114 Jogging Track
- 115 Bikers' Hangout
- 116 Bikers' Pavilion
- 117 Bikers' Grooming Corner (B)
- 118 Car Wash Bay (B2)
- 119 Short Mat Bowling Lawn
- 120 Putting Green
- 121 Ikebana Pavilion

**GARDEN CLUB**

- 122 Heliconia Garden Walk
- 123 Fragrance Garden
- 124 Herb Garden
- 125 Green Fingers Garden
- 126 Hanging Garden
- 127 Mondo Grass Garden
- 128 Palm Garden

- A Guard House
- B Side Gate
- C Electrical Substation
- D Bin Centre
- E Generator Set



**LEGEND**

- 1-BEDROOM CLASSIC
- 1-BEDROOM + STUDY
- 2-BEDROOM CLASSIC
- 2-BEDROOM DELUXE
- 2-BEDROOM + STUDY
- 3-BEDROOM CLASSIC
- 3-BEDROOM DELUXE
- 4-BEDROOM CLASSIC
- 4-BEDROOM DELUXE
- 5-BEDROOM

1

2

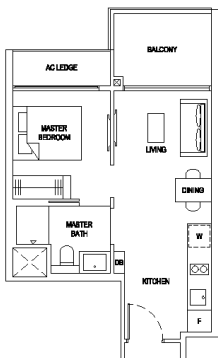
8

FACILITIES.  
12 AMAZING CLUBS  
TO PLAY IN.

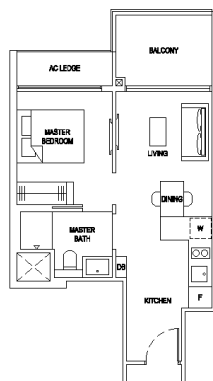


Inspired by the very essence of biophilia, discover a modern sanctuary of many organic curves. Wherein every turn is a lovely surprise that lets you experience something new each time, so you feel that you never really left nature.



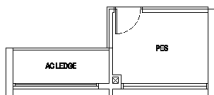


**TYPE 1B1**  
44 sqm / 474 sqft  
#02-57 to #17-57 (BLOCK 93)  
#02-60 to #17-60\* (BLOCK 93)

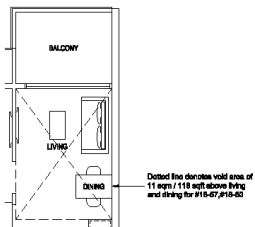


**TYPE 1B2**  
45 sqm / 484 sqft  
#02-01 to #17-01 (BLOCK 81)  
#02-18 to #17-18\* (BLOCK 83)  
#02-27 to #17-27\* (BLOCK 85)  
#02-35 to #17-35 (BLOCK 87)  
#02-36 to #17-36\* (BLOCK 87)  
#02-44 to #17-44 (BLOCK 91)  
#02-71 to #17-71 (BLOCK 95)  
#02-72 to #17-72\* (BLOCK 95)  
#02-80 to #17-80 (BLOCK 97)  
#02-81 to #17-81\* (BLOCK 97)

**TYPE 1B1(G)**  
44 sqm / 474 sqft  
#01-57 (BLOCK 93)  
#01-60\* (BLOCK 93)



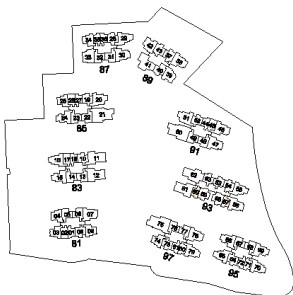
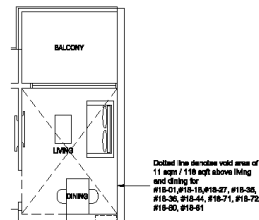
**TYPE 1B1(Ph)**  
55 sqm / 592 sqft  
(incl. void 11 sqm / 118 sqft)  
#18-57 (BLOCK 93)  
#18-60\* (BLOCK 93)



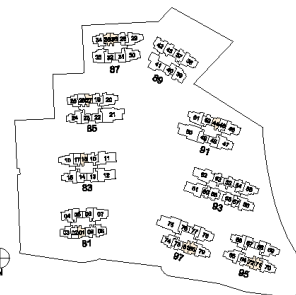
**TYPE 1B2(G)**  
45 sqm / 484 sqft  
#01-01 (BLOCK 81)  
#01-18\* (BLOCK 83)  
#01-27\* (BLOCK 85)  
#01-35 (BLOCK 87)  
#01-36\* (BLOCK 87)  
#01-44 (BLOCK 91)  
#01-71 (BLOCK 95)  
#01-72\* (BLOCK 95)  
#01-80 (BLOCK 97)  
#01-81\* (BLOCK 97)



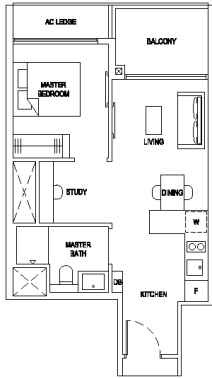
**TYPE 1B2(Ph)**  
56 sqm / 603 sqft  
(incl. void 11 sqm / 118 sqft)  
#18-01 (BLOCK 81)  
#18-18\* (BLOCK 83)  
#18-27\* (BLOCK 85)  
#18-35 (BLOCK 87)  
#18-36\* (BLOCK 87)  
#18-44 (BLOCK 91)  
#18-71 (BLOCK 95)  
#18-72\* (BLOCK 95)  
#18-80 (BLOCK 97)  
#18-81\* (BLOCK 97)



Plans are subject to change/amendments as may be required and/or approved by the Developer and/or the relevant authorities and do not form part of any offer or contract. These are not drawn to scale and are for the purpose of visual presentation only. \*Units with mirror image.

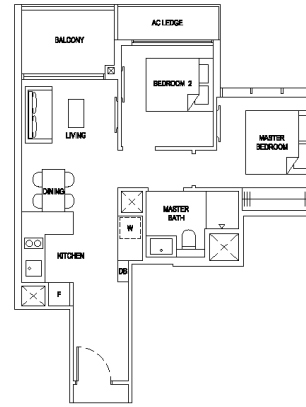


Plans are subject to change/amendments as may be required and/or approved by the Developer and/or the relevant authorities and do not form part of any offer or contract. These are not drawn to scale and are for the purpose of visual presentation only. \*Units with mirror image.



**TYPE 1S1**  
49 sqm / 527 sqft

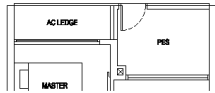
- #02-02 to #17-02\* (BLOCK 81)
- #02-17 to #17-17 (BLOCK 83)
- #02-26 to #17-26 (BLOCK 85)
- #02-45 to #17-45\* (BLOCK 91)



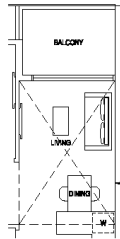
**TYPE 2C1**  
59 sqm / 635 sqft

- #02-05 to #17-05 (BLOCK 81)
- #03-06 to #17-06\* (BLOCK 81)
- #03-67 to #17-67 (BLOCK 95)
- #02-68 to #17-68\* (BLOCK 95)
- #03-76 to #17-76 (BLOCK 97)
- #02-77 to #17-77\* (BLOCK 97)

**TYPE 1S1(G)**  
49 sqm / 527 sqft  
#01-02\* (BLOCK 81)  
#01-17 (BLOCK 83)  
#01-26 (BLOCK 85)  
#01-45\* (BLOCK 91)

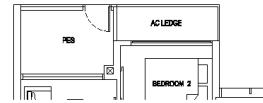


**TYPE 1S1(Ph)**  
62 sqm / 667 sqft  
(incl. void 13 sqm / 140 sqft)  
#18-02\* (BLOCK 81)  
#18-17 (BLOCK 83)  
#18-26 (BLOCK 85)  
#18-45\* (BLOCK 91)

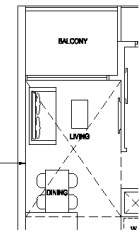


Dotted line denotes void area of 13 sqm / 140 sqft above living and dining for #18-02, #18-17, #18-26, #18-45

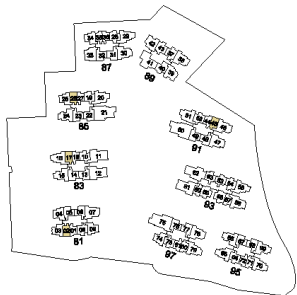
**TYPE 2C1(G)**  
59 sqm / 635 sqft  
#01-05 (BLOCK 81)  
#01-68\* (BLOCK 95)  
#01-77\* (BLOCK 97)



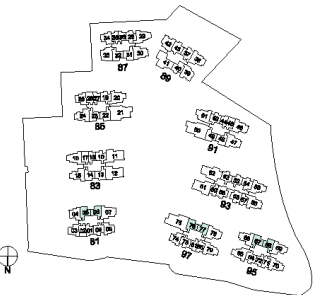
**TYPE 2C1(Ph)**  
71 sqm / 764 sqft  
(incl. void 12 sqm / 129 sqft)  
#18-05 (BLOCK 81)  
#18-06\* (BLOCK 81)  
#18-67 (BLOCK 95)  
#18-68\* (BLOCK 95)  
#18-76 (BLOCK 97)  
#18-77\* (BLOCK 97)



Dotted line denotes void area of 12 sqm / 129 sqft above living and dining for #18-05, #18-06, #18-67, #18-68, #18-76, #18-77

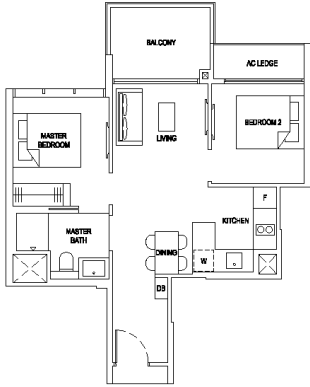


Plans are subject to change/amendments as may be required and/or approved by the Developer and/or the relevant authorities and do not form part of any offer or contract. These are not drawn to scale and are for the purpose of visual presentation only. \*Units with mirror image.

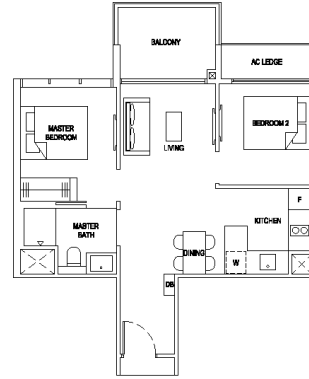


Plans are subject to change/amendments as may be required and/or approved by the Developer and/or the relevant authorities and do not form part of any offer or contract. These are not drawn to scale and are for the purpose of visual presentation only. \*Units with mirror image.





**TYPE 2C2**  
58 sqm / 624 sqft  
#02-53 to #17-53 (BLOCK 93)  
#02-63 to #17-63\* (BLOCK 93)

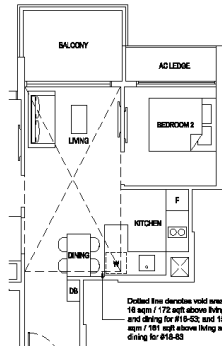


**TYPE 2C3**  
59 sqm / 635 sqft  
#02-09 to #17-09 (BLOCK 81)  
#02-10 to #17-10\* (BLOCK 83)  
#02-19 to #17-19\* (BLOCK 85)  
#02-28 to #17-28\* (BLOCK 87)  
#02-52 to #17-52 (BLOCK 91)  
#02-64 to #17-64\* (BLOCK 95)  
#02-73 to #17-73\* (BLOCK 97)

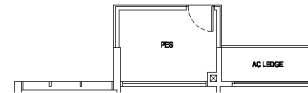
**TYPE 2C2(G)**  
58 sqm / 624 sqft  
#01-53 (BLOCK 93)  
#01-63\* (BLOCK 93)



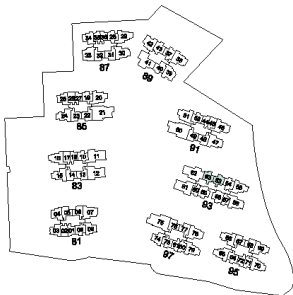
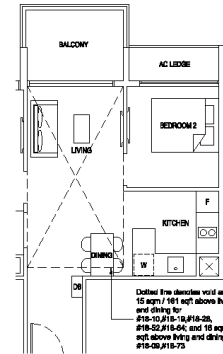
**TYPE 2C2(Ph)**  
74 sqm / 797 sqft (incl. void 16 sqm / 172 sqft)  
#18-53 (BLOCK 93)  
73 sqm / 786 sqft (incl. void 15 sqm / 161 sqft)  
#18-63\* (BLOCK 93)



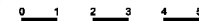
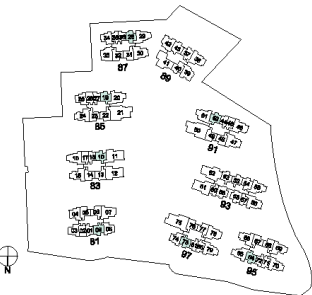
**TYPE 2C3(G)**  
59 sqm / 635 sqft  
#01-09 (BLOCK 81)  
#01-10\* (BLOCK 83)  
#01-19\* (BLOCK 85)  
#01-28\* (BLOCK 87)  
#01-52 (BLOCK 91)  
#01-64\* (BLOCK 95)  
#01-73\* (BLOCK 97)



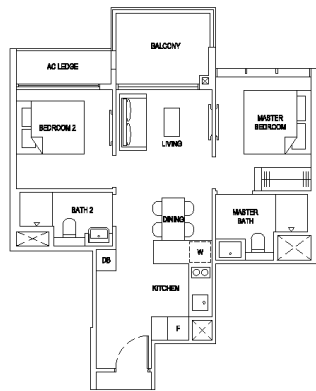
**TYPE 2C3(Ph)**  
74 sqm / 797 sqft (incl. void 15 sqm / 161 sqft)  
#18-10\* (BLOCK 83)  
#18-19\* (BLOCK 85)  
#18-28\* (BLOCK 87)  
#18-52 (BLOCK 91)  
#18-64\* (BLOCK 95)  
75 sqm / 807 sqft (incl. void 16 sqm / 172 sqft)  
#18-09 (BLOCK 81)  
#18-73\* (BLOCK 97)



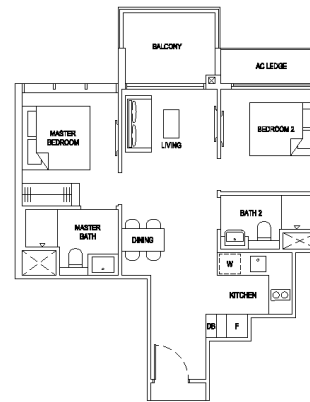
Plans are subject to change/amendments as may be required and/or approved by the Developer and/or the relevant authorities and do not form part of any offer or contract. These are not drawn to scale and are for the purpose of visual presentation only. \*Units with mirror image.



Plans are subject to change/amendments as may be required and/or approved by the Developer and/or the relevant authorities and do not form part of any offer or contract. These are not drawn to scale and are for the purpose of visual presentation only. \*Units with mirror image.



**TYPE 2D1**  
60 sqm / 646 sqft  
#02-54 to #17-54 (BLOCK 93)

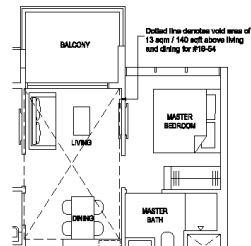


**TYPE 2D2**  
62 sqm / 667 sqft  
#02-37 to #17-37 (BLOCK 89)  
#02-43 to #17-43\* (BLOCK 89)

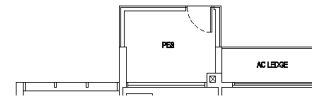
**TYPE 2D1(G)**  
60 sqm / 646 sqft  
#01-54 (BLOCK 93)



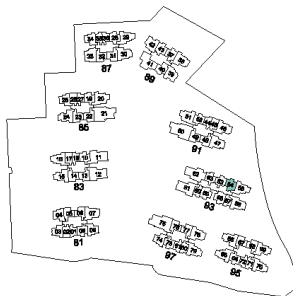
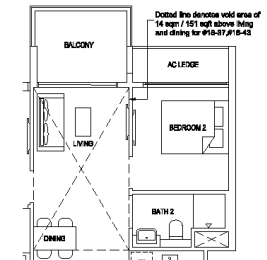
**TYPE 2D1(Ph)**  
73 sqm / 786 sqft (incl. void 13 sqm / 140 sqft)  
#18-54 (BLOCK 93)



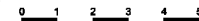
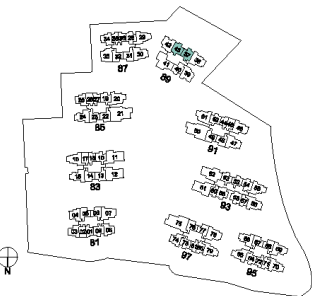
**TYPE 2D2(G)**  
62 sqm / 667 sqft  
#01-37 (BLOCK 89)  
#01-43\* (BLOCK 89)



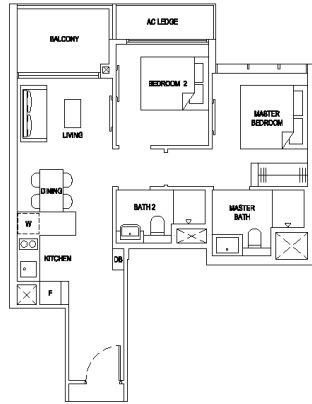
**TYPE 2D2(Ph)**  
76 sqm / 818 sqft (incl. void 14 sqm / 151 sqft)  
#18-37 (BLOCK 89)  
#18-43\* (BLOCK 89)



Plans are subject to change/amendments as may be required and/or approved by the Developer and/or the relevant authorities and do not form part of any offer or contract. These are not drawn to scale and are for the purpose of visual presentation only. \*Link with mirror image.

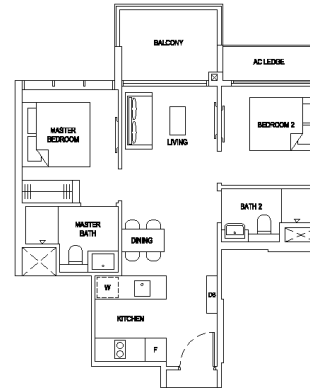


Plans are subject to change/amendments as may be required and/or approved by the Developer and/or the relevant authorities and do not form part of any offer or contract. These are not drawn to scale and are for the purpose of visual presentation only. \*Link with mirror image.



**TYPE 2D3**  
62 sqm / 667 sqft

- #03-13 to #17-13 (BLOCK 83)
- #02-14 to #17-14\* (BLOCK 83)
- #03-22 to #17-22 (BLOCK 85)
- #02-23 to #17-23\* (BLOCK 85)
- #03-31 to #17-31 (BLOCK 87)
- #02-32 to #17-32\* (BLOCK 87)
- #02-48 to #17-48 (BLOCK 91)
- #03-49 to #17-49\* (BLOCK 91)



**TYPE 2D4**  
62 sqm / 667 sqft

- #02-40 to #17-40 (BLOCK 89)

**TYPE 2D3(G)**  
62 sqm / 667 sqft

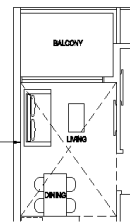
- #01-14\* (BLOCK 83)
- #01-23\* (BLOCK 85)
- #01-32\* (BLOCK 87)
- #01-48 (BLOCK 91)



**TYPE 2D3(Ph)**

74 sqm / 797 sqft (incl. void 12 sqm / 129 sqft)

- #18-13 (BLOCK 83)
- #18-14\* (BLOCK 83)
- #18-22 (BLOCK 85)
- #18-23\* (BLOCK 85)
- #18-31 (BLOCK 87)
- #18-32\* (BLOCK 87)
- #18-48 (BLOCK 91)
- #18-49\* (BLOCK 91)



Dotted line denotes void area of 12 sqm / 129 sqft above living and dining for #18-13, #18-14, #18-22, #18-23, #18-31, #18-32, #18-48, #18-49

**TYPE 2D4(G)**  
62 sqm / 667 sqft

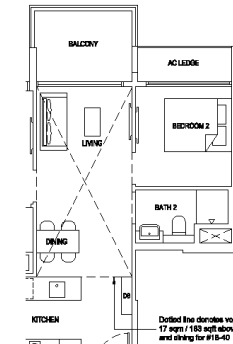
- #01-40 (BLOCK 89)



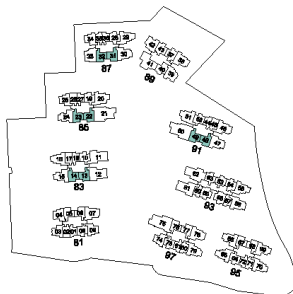
**TYPE 2D4(Ph)**

79 sqm / 850 sqft (incl. void 17 sqm / 183 sqft)

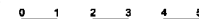
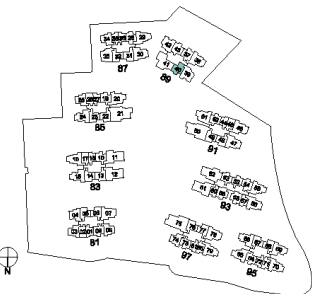
- #18-40 (BLOCK 89)



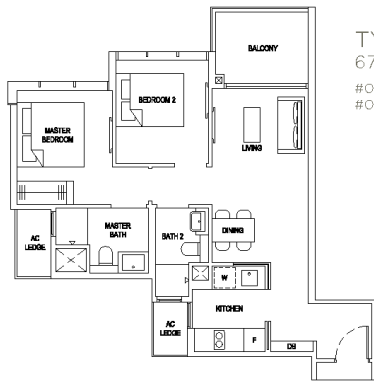
Dotted line denotes void area of 17 sqm / 183 sqft above living and dining for #18-40



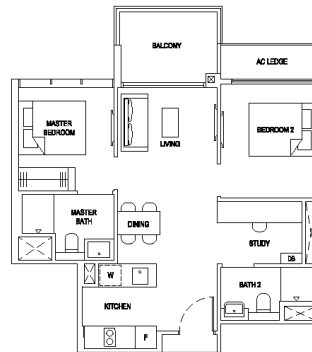
Plans are subject to change/amendments as may be required and/or approved by the Developer and/or the relevant authorities and do not form part of any offer or contract. These are not drawn to scale and are for the purpose of visual presentation only. \*Units with mirror image.



Plans are subject to change/amendments as may be required and/or approved by the Developer and/or the relevant authorities and do not form part of any offer or contract. These are not drawn to scale and are for the purpose of visual presentation only.

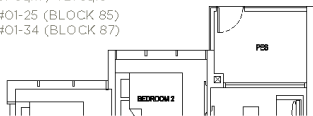


**TYPE 2D5**  
67 sqm / 721 sqft  
#02-25 to #17-25 (BLOCK 85)  
#02-34 to #17-34 (BLOCK 87)

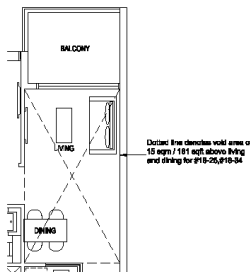


**TYPE 2S1**  
65 sqm / 700 sqft  
#02-58 to #17-58\* (BLOCK 93)  
#02-59 to #17-59 (BLOCK 93)

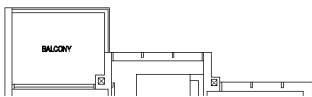
**TYPE 2D5(G)**  
67 sqm / 721 sqft  
#01-25 (BLOCK 85)  
#01-34 (BLOCK 87)



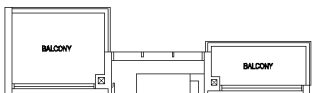
**TYPE 2D5(Ph)**  
82 sqm / 883 sqft (incl. void 15 sqm / 161 sqft)  
#18-25 (BLOCK 85)  
#18-34 (BLOCK 87)



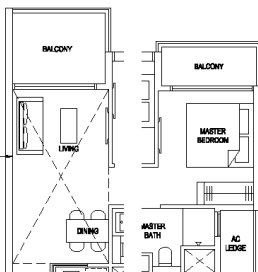
**TYPE 2D5a**  
67 sqm / 721 sqft  
#03-03 to #14-03 (BLOCK 81)  
#03-08 to #14-08\* (BLOCK 81)  
#03-74 to #14-74 (BLOCK 97)



**TYPE 2D5a(b)**  
70 sqm / 753 sqft  
#15-03 to #17-03 (BLOCK 81)  
#15-08 to #17-08\* (BLOCK 81)  
#15-74 to #17-74 (BLOCK 97)



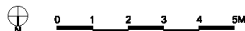
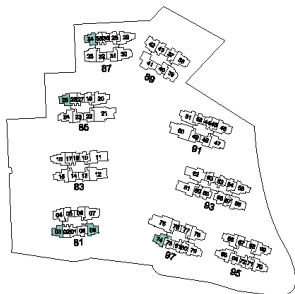
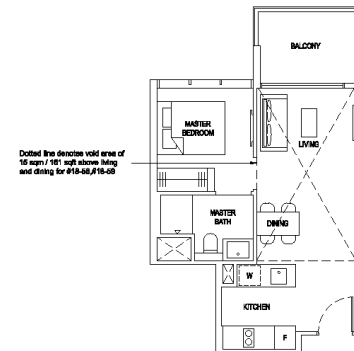
**TYPE 2D5a(Ph)**  
85 sqm / 915 sqft (incl. void 15 sqm / 161 sqft)  
#18-03 (BLOCK 81)  
#18-08\* (BLOCK 81)  
#18-74 (BLOCK 97)



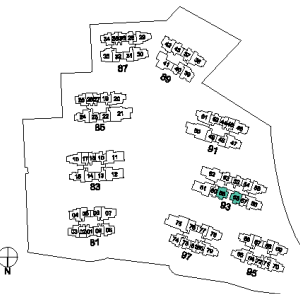
**TYPE 2S1(G)**  
65 sqm / 700 sqft  
#01-58\* (BLOCK 93)  
#01-59 (BLOCK 93)



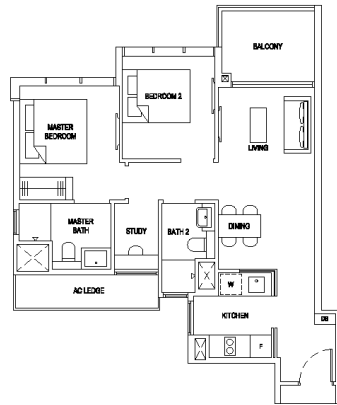
**TYPE 2S1(Ph)**  
81 sqm / 872 sqft (incl. void 15 sqm / 161 sqft)  
#18-58\* (BLOCK 93)  
#18-59 (BLOCK 93)



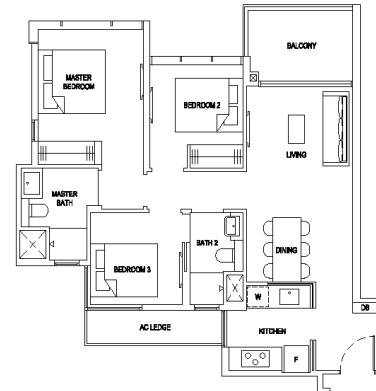
Plans are subject to change/amendments as may be required and/or approved by the Developer and/or the relevant authorities and do not form part of any offer or contract. These are not drawn to scale and are for the purpose of visual presentation only. \*Units with mirror image.



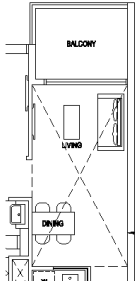
Plans are subject to change/amendments as may be required and/or approved by the Developer and/or the relevant authorities and do not form part of any offer or contract. These are not drawn to scale and are for the purpose of visual presentation only. \*Units with mirror image.



**TYPE 2S2**  
70 sqm / 753 sqft  
#03-04 to #17-04 (BLOCK 81)

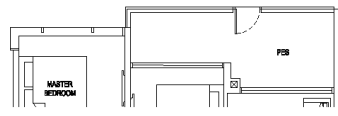


**TYPE 3C1**  
83 sqm / 893 sqft  
#02-42 to #17-42 (BLOCK 89)

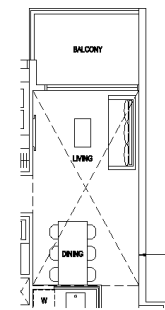


**TYPE 2S2(Ph)**  
86 sqm / 926 sqft (incl. void 16 sqm / 172 sqft)  
#18-04 (BLOCK 81)

Dotted line denotes void area of 16 sqm / 172 sqft above living and dining for #18-04

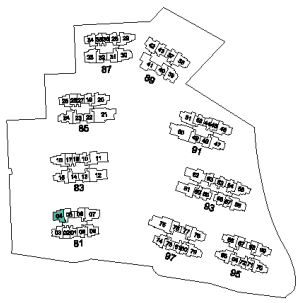


**TYPE 3C1(G)**  
88 sqm / 947 sqft  
#01-42 (BLOCK 89)

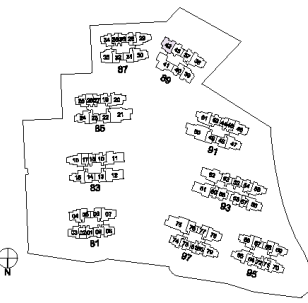


**TYPE 3C1(Ph)**  
101 sqm / 1087 sqft (incl. void 18 sqm / 194 sqft)  
#18-42 (BLOCK 89)

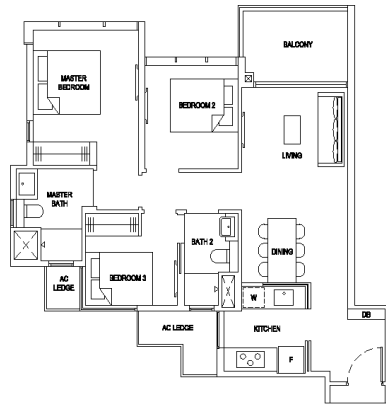
Dotted line denotes void area of 18 sqm / 194 sqft above living and dining for #18-42



Plans are subject to change/amendments as may be required and/or approved by the Developer and/or the relevant authorities and do not form part of any offer or contract. These are not drawn to scale and are for the purpose of visual presentation only.

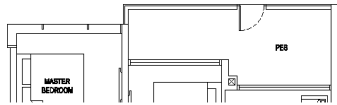


Plans are subject to change/amendments as may be required and/or approved by the Developer and/or the relevant authorities and do not form part of any offer or contract. These are not drawn to scale and are for the purpose of visual presentation only.

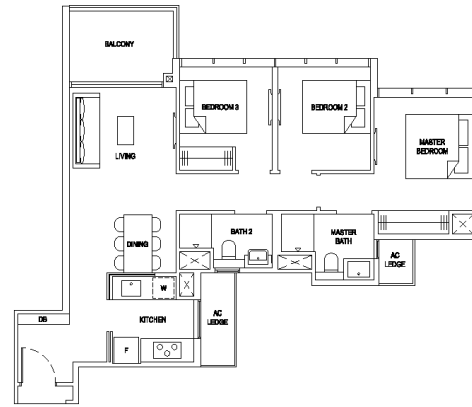
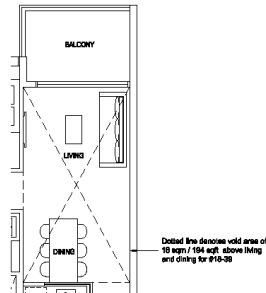


**TYPE 3C2**  
85 sqm / 915 sqft  
#02-39 to #17-39 (BLOCK 89)

**TYPE 3C2(G)**  
90 sqm / 969 sqft  
#01-39 (BLOCK 89)

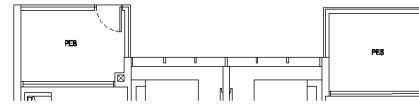


**TYPE 3C2(Ph)**  
103 sqm / 1109 sqft (incl. void 18 sqm / 194 sqft)  
#18-39 (BLOCK 89)



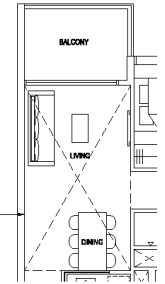
**TYPE 3C3**  
86 sqm / 926 sqft  
#02-15 to #17-15 (BLOCK 83)  
#02-24 to #17-24 (BLOCK 85)  
#03-66 to #17-66\* (BLOCK 95)

**TYPE 3C3(G)**  
93 sqm / 1001 sqft  
#01-15 (BLOCK 83), #01-24 (BLOCK 85)

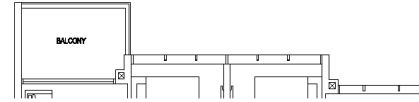


**TYPE 3C3(Ph)**  
103 sqm / 1109 sqft (incl. void 17 sqm / 183 sqft)  
#18-15 (BLOCK 83)  
#18-24 (BLOCK 85)

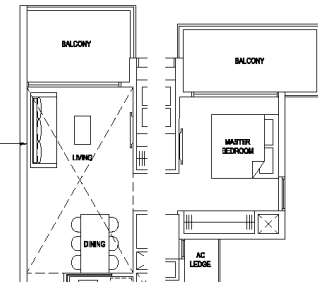
104 sqm / 1119 sqft (incl. void 18 sqm / 194 sqft)  
#18-66\* (BLOCK 95)



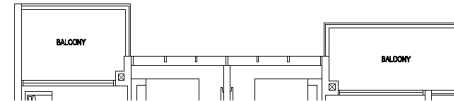
**TYPE 3C3a**  
86 sqm / 926 sqft  
#02-69 to #14-69 (BLOCK 95)



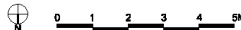
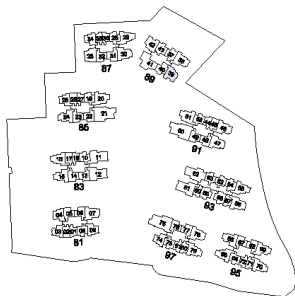
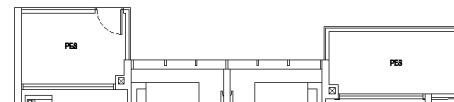
**TYPE 3C3a(Ph)**  
110 sqm / 1184 sqft (incl. void 17 sqm / 183 sqft)  
#18-69 (BLOCK 95)



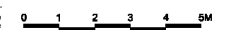
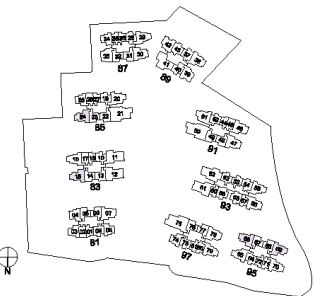
**TYPE 3C3a(b)**  
93 sqm / 1001 sqft  
#15-69 to #17-69 (BLOCK 95)



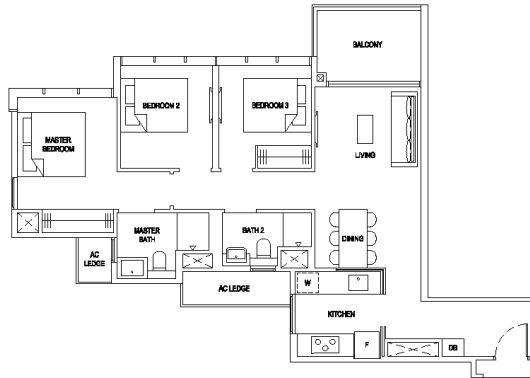
**TYPE 3C3a(G)**  
93 sqm / 1001 sqft  
#01-69 (BLOCK 95)



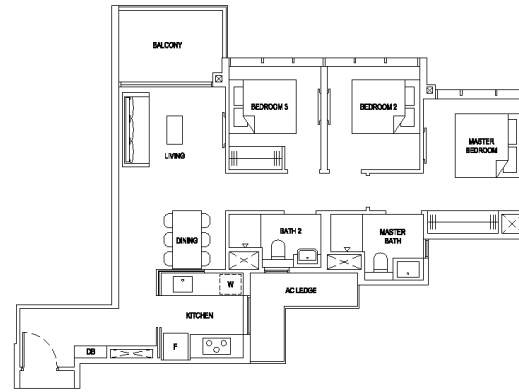
Plans are subject to change/amendments as may be required and/or approved by the Developer and/or the relevant authorities and do not form part of any offer or contract. These are not drawn to scale and are for the purpose of visual presentation only.



Plans are subject to change/amendments as may be required and/or approved by the Developer and/or the relevant authorities and do not form part of any offer or contract. These are not drawn to scale and are for the purpose of visual presentation only. \*Units with mirror image.

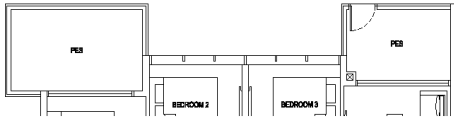


**TYPE 3C4**  
87 sqm / 936 sqft  
#02-16 to #17-16 (BLOCK 83)  
#02-79 to #17-79 (BLOCK 97)

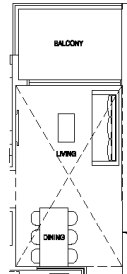


**TYPE 3C5a**  
87 sqm / 936 sqft  
#02-55 to #14-55 (BLOCK 93)

**TYPE 3C4(G)**  
97 sqm / 1044 sqft  
#01-16 (BLOCK 83), #01-79 (BLOCK 97)

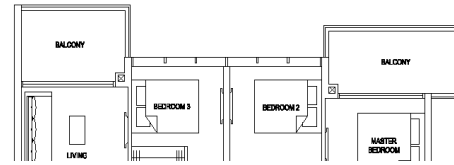


**TYPE 3C4(PH)**  
104 sqm / 1119 sqft  
(incl. void 17 sqm / 183 sqft)  
#18-16 (BLOCK 83)  
#18-79 (BLOCK 97)

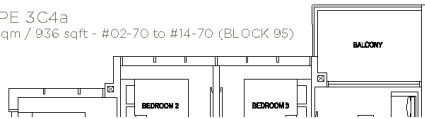


Dotted line denotes void area of 17 sqm / 183 sqft above living and dining for #18-16, #18-79

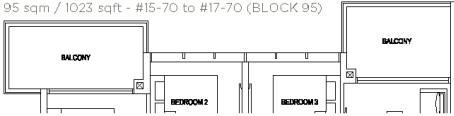
**TYPE 3C5a(b)**  
95 sqm / 1023 sqft  
#15-55 to #17-55 (BLOCK 93)



**TYPE 3C4a**  
87 sqm / 936 sqft - #02-70 to #14-70 (BLOCK 95)



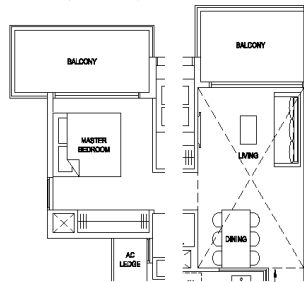
**TYPE 3C4a(b)**  
95 sqm / 1023 sqft - #15-70 to #17-70 (BLOCK 95)



**TYPE 3C4a(G)**  
95 sqm / 1023 sqft - #01-70 (BLOCK 95)

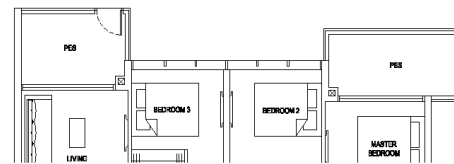


**TYPE 3C4a(PH)**  
112 sqm / 1206 sqft  
(incl. void 17 sqm / 183 sqft)  
#18-70 (BLOCK 95)

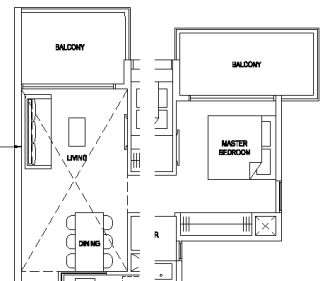


Dotted line denotes void area of 17 sqm / 183 sqft above living and dining for #18-70

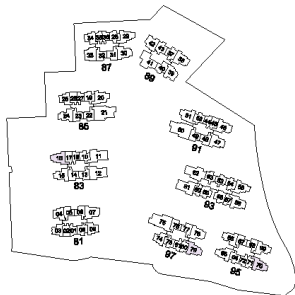
**TYPE 3C5a(G)**  
95 sqm / 1023 sqft  
#01-55 (BLOCK 93)



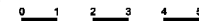
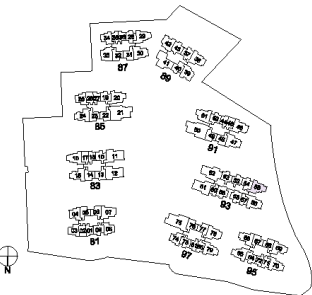
**TYPE 3C5a(Ph)**  
112 sqm / 1206 sqft  
(incl. void 17 sqm / 183 sqft)  
#18-55 (BLOCK 93)



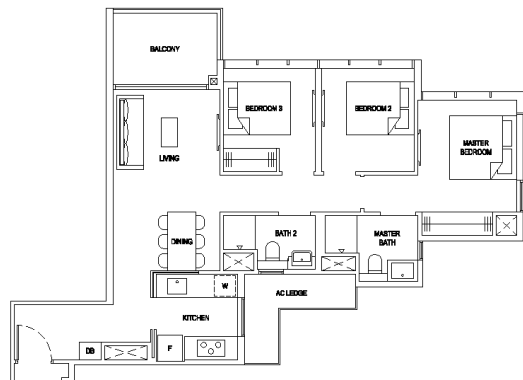
Dotted line denotes void area of 17 sqm / 183 sqft above living and dining for #18-55



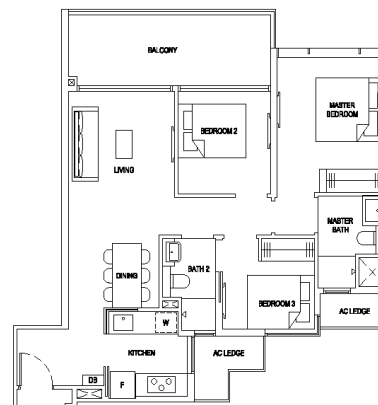
Plans are subject to change/amendments as may be required and/or approved by the Developer and/or the relevant authorities and do not form part of any offer or contract. These are not drawn to scale and are for the purpose of visual presentation only.



Plans are subject to change/amendments as may be required and/or approved by the Developer and/or the relevant authorities and do not form part of any offer or contract. These are not drawn to scale and are for the purpose of visual presentation only.

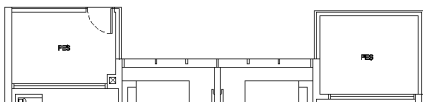


**TYPE 3C6**  
87 sqm / 936 sqft  
#02-65 to #17-65 (BLOCK 95)

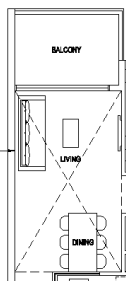


**TYPE 3C7**  
91 sqm / 980 sqft  
#02-33 to #17-33 (BLOCK 87)

**TYPE 3C6(G)**  
94 sqm / 1012 sqft - #01-65 (BLOCK 95)

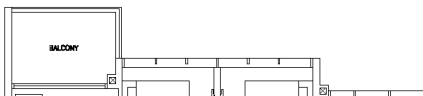


**TYPE 3C6(Ph)**  
104 sqm / 1119 sqft  
(incl. void 17 sqm / 183 sqft)  
#18-65 (BLOCK 95)

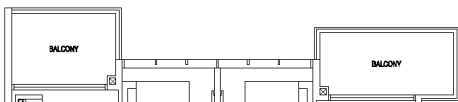


Dotted line denotes void area of 17 sqm / 183 sqft above living and dining for #18-65

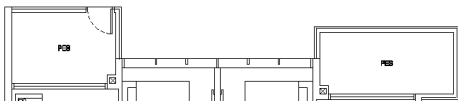
**TYPE 3C6a**  
87 sqm / 936 sqft - #02-29 to #14-29 (BLOCK 87)



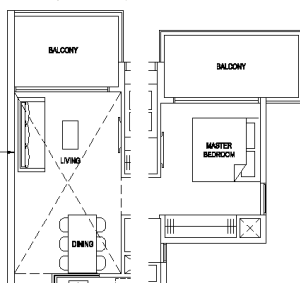
**TYPE 3C6a(b)**  
94 sqm / 1012 sqft - #15-29 to #17-29 (BLOCK 87)



**TYPE 3C6a(G)**  
95 sqm / 1023 sqft - #01-29 (BLOCK 87)

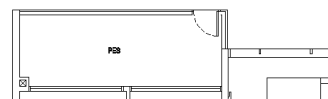


**TYPE 3C6a(Ph)**  
111 sqm / 1195 sqft  
(incl. void 17 sqm / 183 sqft)  
#18-29 (BLOCK 87)

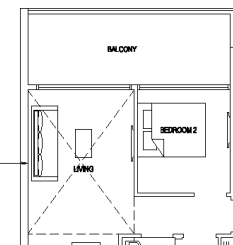


Dotted line denotes void area of 17 sqm / 183 sqft above living and dining for #18-29

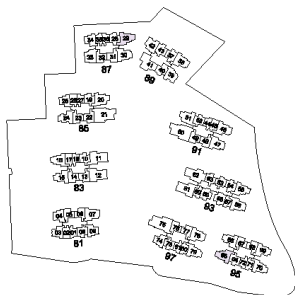
**TYPE 3C7(G)**  
91 sqm / 980 sqft  
#01-33 (BLOCK 87)



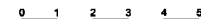
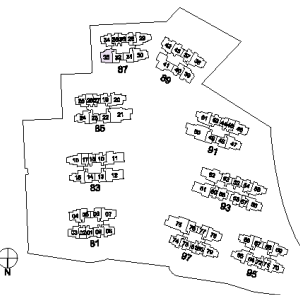
**TYPE 3C7(Ph)**  
105 sqm / 1130 sqft  
(incl. void 14 sqm / 151 sqft)  
#18-33 (BLOCK 87)



Dotted line denotes void area of 14 sqm / 151 sqft above living and dining for #18-33



Plans are subject to change/amendments as may be required and/or approved by the Developer and/or the relevant authorities and do not form part of any offer or contract. These are not drawn to scale and are for the purpose of visual presentation only.



Plans are subject to change/amendments as may be required and/or approved by the Developer and/or the relevant authorities and do not form part of any offer or contract. These are not drawn to scale and are for the purpose of visual presentation only.



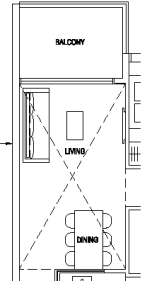


**TYPE 3D1**  
92 sqm / 990 sqft  
#03-30 to #17-30 (BLOCK 87)



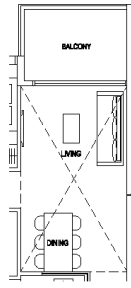
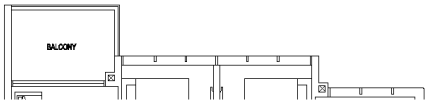
**TYPE 3D2**  
94 sqm / 1012 sqft  
#02-78 to #17-78 (BLOCK 97)

**TYPE 3D2(Ph)**  
111 sqm / 1195 sqft  
(incl. void 17 sqm / 183 sqft)  
#18-78 (BLOCK 97)



Dotted line denotes void area of 17 sqm / 183 sqft above living and dining for #18-78

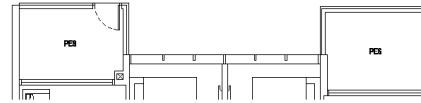
**TYPE 3D1a**  
92 sqm / 990 sqft - #03-07 to #14-07 (BLOCK 81)



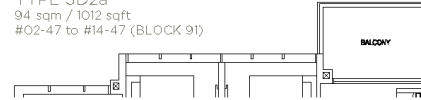
**TYPE 3D1(Ph)**  
110 sqm / 1184 sqft  
(incl. void 18 sqm / 194 sqft)  
#18-30 (BLOCK 87)

Dotted line denotes void area of 18 sqm / 194 sqft above living and dining for #18-30

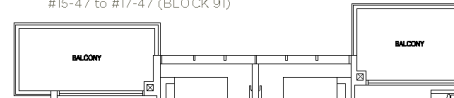
**TYPE 3D2(G)**  
101 sqm / 1087 sqft  
#01-78 (BLOCK 97)



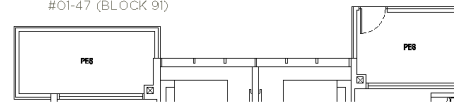
**TYPE 3D2a**  
94 sqm / 1012 sqft  
#02-47 to #14-47 (BLOCK 91)



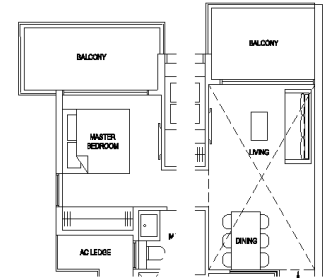
**TYPE 3D2a(b)**  
101 sqm / 1087 sqft  
#15-47 to #17-47 (BLOCK 91)



**TYPE 3D2a(G)**  
102 sqm / 1098 sqft  
#01-47 (BLOCK 91)

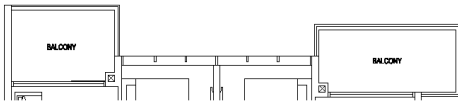


**TYPE 3D2a(Ph)**  
118 sqm / 1270 sqft (incl. void 17 sqm / 183 sqft)  
#18-47 (BLOCK 91)

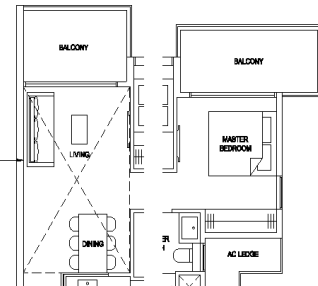


Dotted line denotes void area of 17 sqm / 183 sqft above living and dining for #18-47

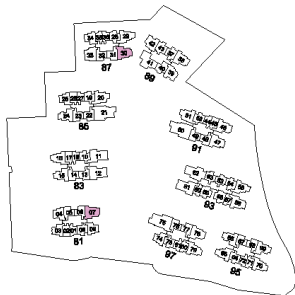
**TYPE 3D1a(b)**  
100 sqm / 1076 sqft - #15-07 to #17-07 (BLOCK 81)



**TYPE 3D1a(Ph)**  
118 sqm / 1270 sqft  
(incl. void 18 sqm / 194 sqft)  
#18-07 (BLOCK 81)



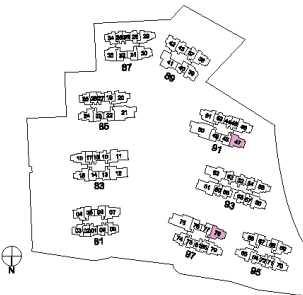
Dotted line denotes void area of 18 sqm / 194 sqft above living and dining for #18-07

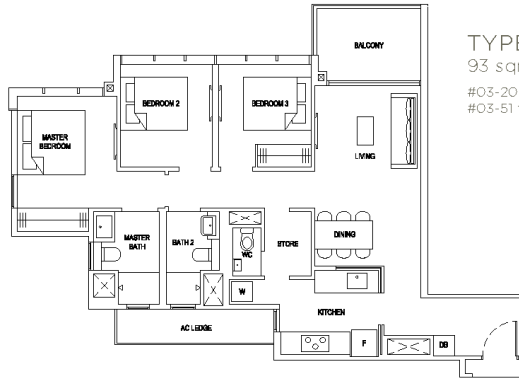


Plans are subject to change/amendments as may be required and/or approved by the Developer and/or the relevant authorities and do not form part of any offer or contract. These are not drawn to scale and are for the purpose of visual presentation only.

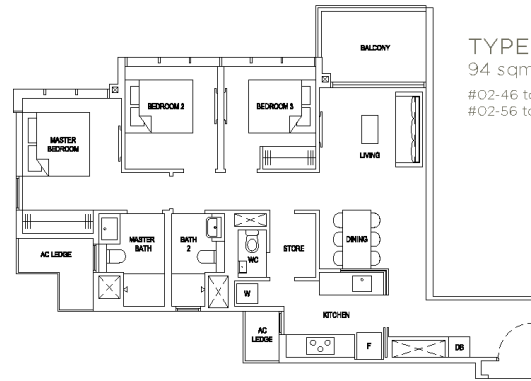


Plans are subject to change/amendments as may be required and/or approved by the Developer and/or the relevant authorities and do not form part of any offer or contract. These are not drawn to scale and are for the purpose of visual presentation only.



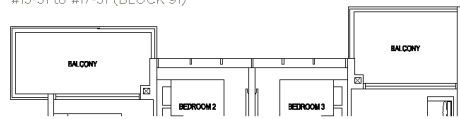


**TYPE 3D3a**  
93 sqm / 1001 sqft  
#03-20 to #14-20\* (BLOCK 85)  
#03-51 to #14-51 (BLOCK 91)

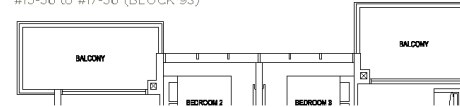


**TYPE 3D4a**  
94 sqm / 1012 sqft  
#02-46 to #14-46\* (BLOCK 91)  
#02-56 to #14-56 (BLOCK 93)

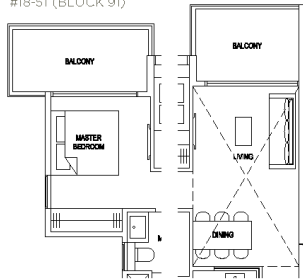
**TYPE 3D3a(b)**  
101 sqm / 1087 sqft  
#15-20 to #17-20\* (BLOCK 85)  
#15-51 to #17-51 (BLOCK 91)



**TYPE 3D4a(b)**  
102 sqm / 1098 sqft  
#15-46 to #17-46\* (BLOCK 91)  
#15-56 to #17-56 (BLOCK 93)

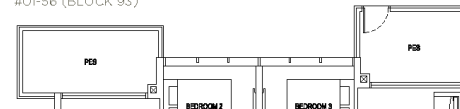


**TYPE 3D3a(Ph)**  
118 sqm / 1270 sqft  
(incl. void 17 sqm / 183 sqft)  
#18-20\* (BLOCK 85)  
#18-51 (BLOCK 91)

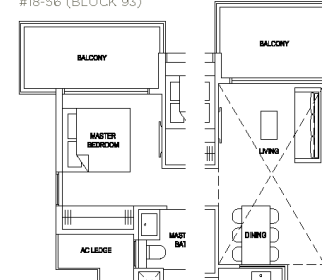


Dotted line denotes void area of 17 sqm / 183 sqft above living and dining for #18-20, #18-51

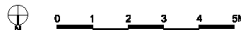
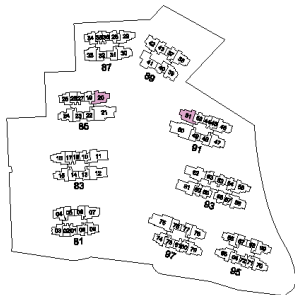
**TYPE 3D4a(G)**  
102 sqm / 1098 sqft  
#01-46\* (BLOCK 91)  
#01-56 (BLOCK 93)



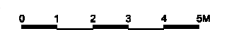
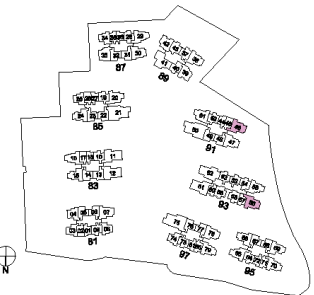
**TYPE 3D4a(Ph)**  
119 sqm / 1281 sqft  
(incl. void 17 sqm / 183 sqft)  
#18-46\* (BLOCK 91)  
#18-56 (BLOCK 93)



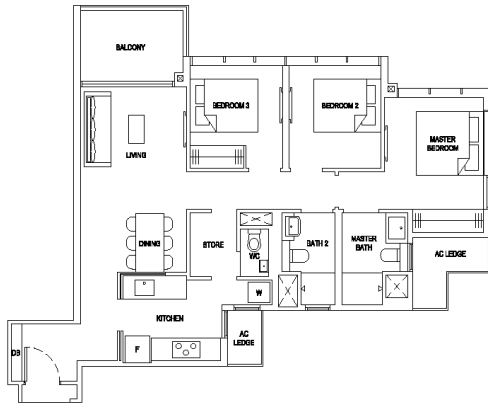
Dotted line denotes void area of 17 sqm / 183 sqft above living and dining for #18-46, #18-56



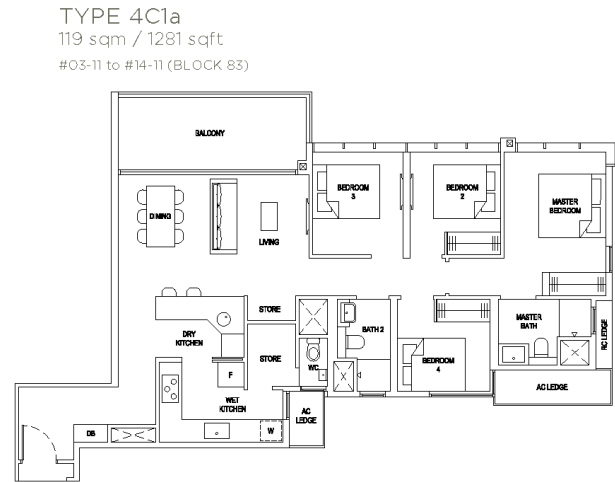
Plans are subject to change/amendments as may be required and/or approved by the Developer and/or the relevant authorities and do not form part of any offer or contract. These are not drawn to scale and are for the purpose of visual presentation only. \*Units with mirror image.



Plans are subject to change/amendments as may be required and/or approved by the Developer and/or the relevant authorities and do not form part of any offer or contract. These are not drawn to scale and are for the purpose of visual presentation only. \*Units with mirror image.

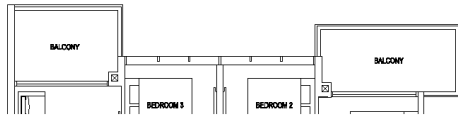


TYPE 3D5a  
94 sqm / 1012 sqft  
#02-38 to #14-38 (BLOCK 89)

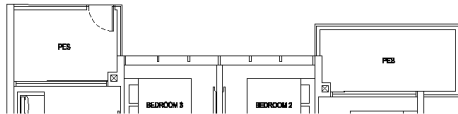


TYPE 4C1a  
119 sqm / 1281 sqft  
#03-11 to #14-11 (BLOCK 83)

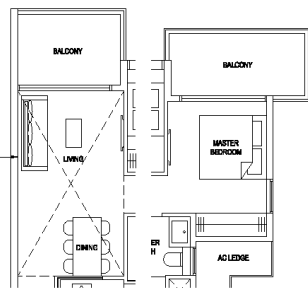
TYPE 3D5a(b)  
101 sqm / 1087 sqft  
#15-38 to #17-38 (BLOCK 89)



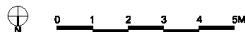
TYPE 3D5a(G)  
101 sqm / 1087 sqft  
#01-38 (BLOCK 89)



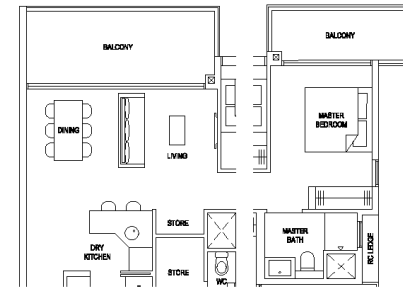
TYPE 3D5a(Ph)  
118 sqm / 1270 sqft  
(incl. void 17 sqm / 183 sqft)  
#18-38 (BLOCK 89)



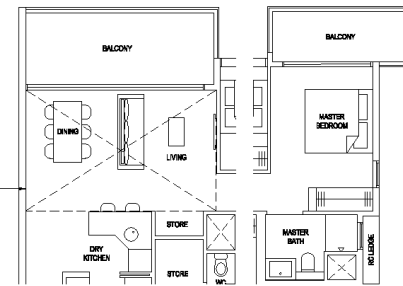
Dotted line denotes void area of 17 sqm / 183 sqft above living and dining for #18-38



Plans are subject to change/amendments as may be required and/or approved by the Developer and/or the relevant authorities and do not form part of any offer or contract. These are not drawn to scale and are for the purpose of visual presentation only.



TYPE 4C1a(b)  
125 sqm / 1346 sqft  
#15-11 to #17-11 (BLOCK 83)

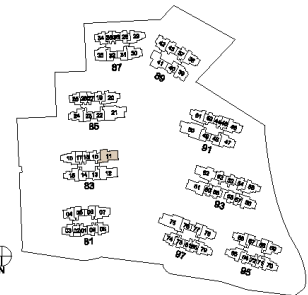
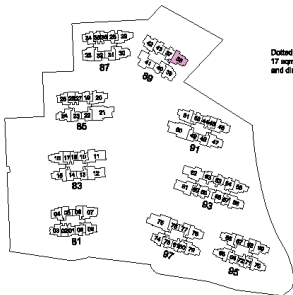


TYPE 4C1a(Ph)  
145 sqm / 1561 sqft  
(incl. void 20 sqm / 215 sqft)  
#18-11 (BLOCK 83)

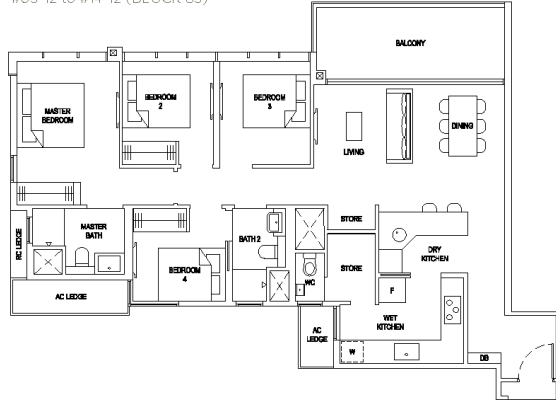
Dotted line denotes void area of 20 sqm / 215 sqft above living and dining for #18-11



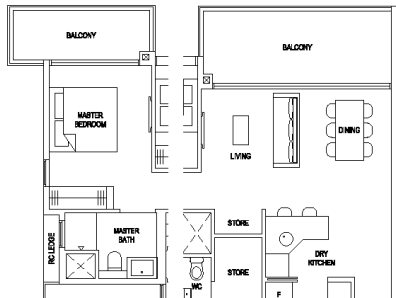
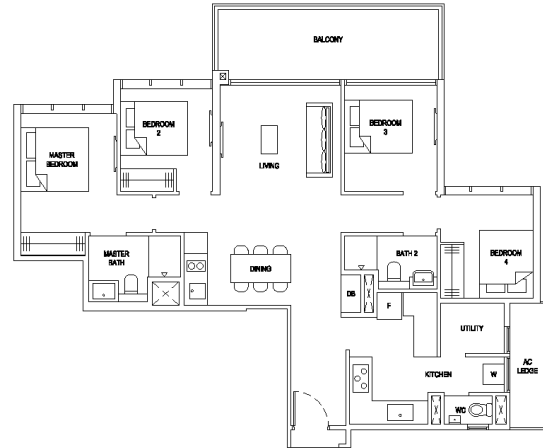
Plans are subject to change/amendments as may be required and/or approved by the Developer and/or the relevant authorities and do not form part of any offer or contract. These are not drawn to scale and are for the purpose of visual presentation only.



TYPE 4C2a  
118 sqm / 1270 sqft  
#03-12 to #14-12 (BLOCK 83)

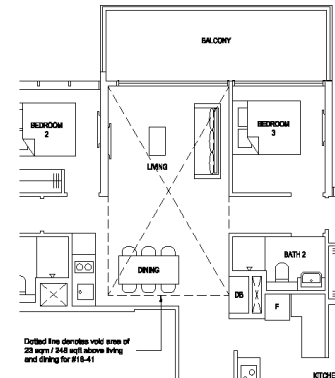


TYPE 4C3  
119 sqm / 1281 sqft  
#03-41 to #17-41 (BLOCK 89)

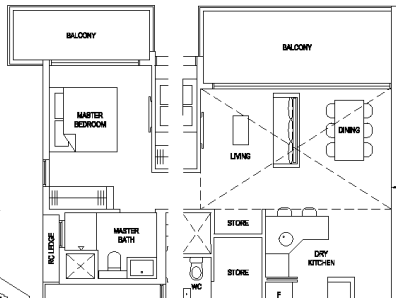


TYPE 4C2a(b)  
125 sqm / 1346 sqft  
#15-12 to #17-12 (BLOCK 83)

TYPE 4C3(Ph)  
142 sqm / 1528 sqft (incl. void 23 sqm / 248 sqft)  
#18-41 (BLOCK 89)

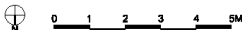
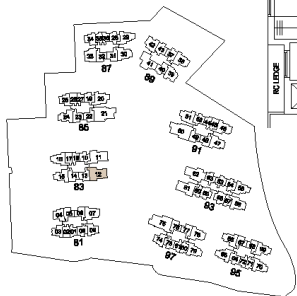


Dotted line denotes void area of 23 sqm / 248 sqft above living and dining for #18-41

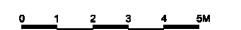
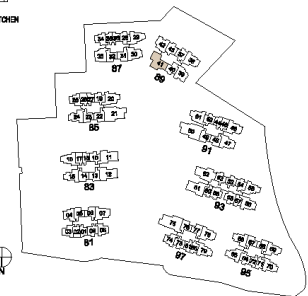


TYPE 4C2a(Ph)  
145 sqm / 1561 sqft  
(incl. void 20 sqm / 215 sqft)  
#18-12 (BLOCK 83)

Dotted line denotes void area of 20 sqm / 215 sqft above living and dining for #18-12

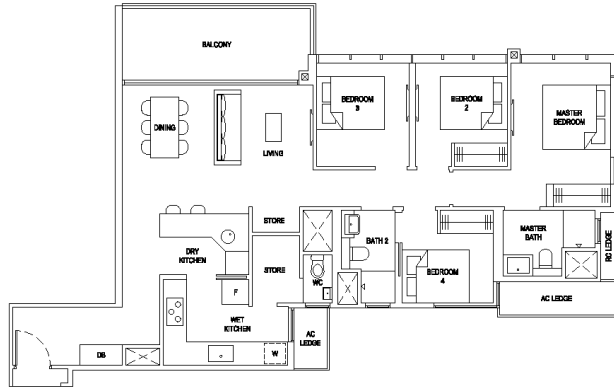


Plans are subject to change/amendments as may be required and/or approved by the Developer and/or the relevant authorities and do not form part of any offer or contract. These are not drawn to scale and are for the purpose of visual presentation only.

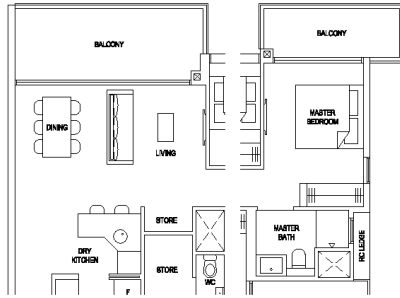


Plans are subject to change/amendments as may be required and/or approved by the Developer and/or the relevant authorities and do not form part of any offer or contract. These are not drawn to scale and are for the purpose of visual presentation only.

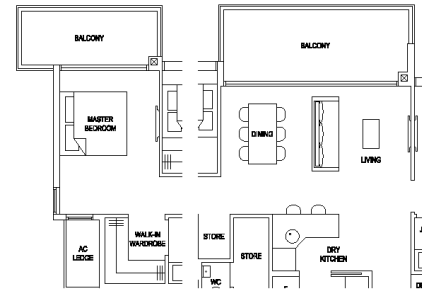
TYPE 4C4a  
120 sqm / 1292 sqft  
#03-61 to #14-61 (BLOCK 93)



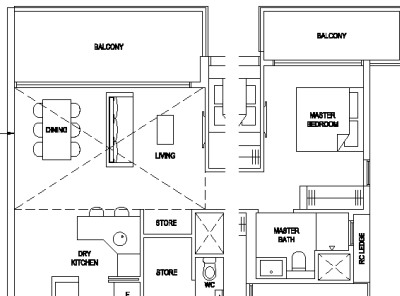
TYPE 4D1a  
129 sqm / 1389 sqft  
#03-62 to #14-62 (BLOCK 93)



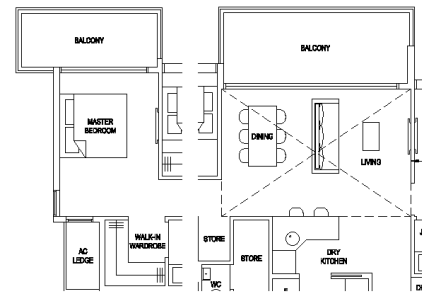
TYPE 4C4a(b)  
126 sqm / 1356 sqft  
#15-61 to #17-61 (BLOCK 93)



TYPE 4D1a(b)  
136 sqm / 1464 sqft  
#15-62 to #17-62 (BLOCK 93)



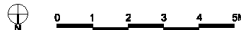
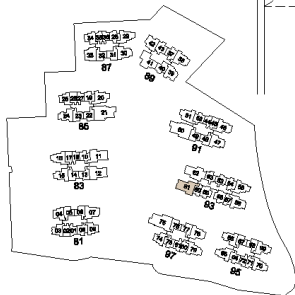
TYPE 4C4a(Ph)  
147 sqm / 1582 sqft  
(incl. void 20 sqm / 215 sqft)  
#18-61 (BLOCK 93)



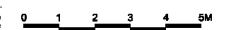
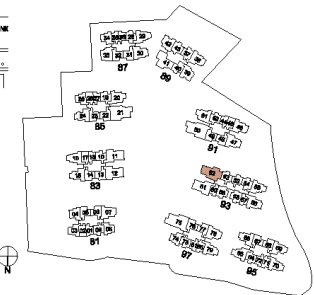
TYPE 4D1a(Ph)  
158 sqm / 1701 sqft  
(incl. void 22 sqm / 237 sqft)  
#18-62 (BLOCK 93)

Dotted line denotes void area of 20 sqm / 215 sqft above living and dining for #18-61

Dotted line denotes void area of 22 sqm / 237 sqft above living and dining for #18-62



Plans are subject to change/amendments as may be required and/or approved by the Developer and/or the relevant authorities and do not form part of any offer or contract. These are not drawn to scale and are for the purpose of visual presentation only.

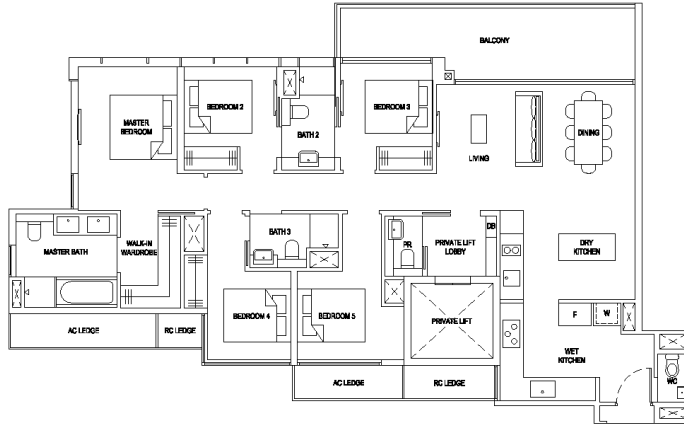


Plans are subject to change/amendments as may be required and/or approved by the Developer and/or the relevant authorities and do not form part of any offer or contract. These are not drawn to scale and are for the purpose of visual presentation only.

TYPE 5B1

155 sqm / 1668 sqft

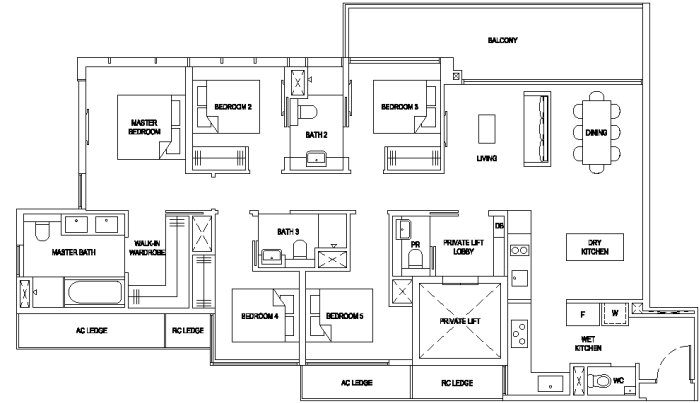
#03-75 to #17-75 (BLOCK 97)



TYPE 5B2

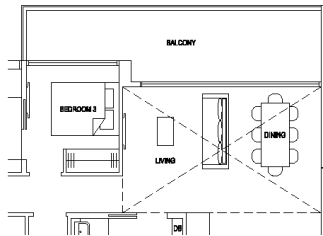
156 sqm / 1679 sqft

#03-21 to #17-21 (BLOCK 85)  
#03-50 to #17-50\* (BLOCK 91)



TYPE 5B1(PH)

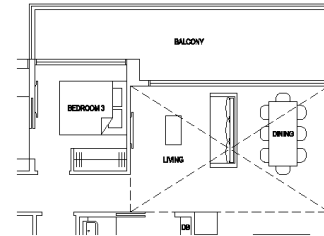
177 sqm / 1905 sqft (incl. void 22 sqm / 237 sqft)  
#18-75 (BLOCK 97)



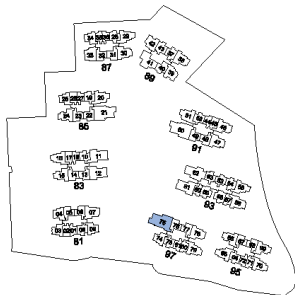
Dotted line denotes void area of 22 sqm / 237 sqft above living and dining for #18-75

TYPE 5B2(PH)

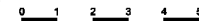
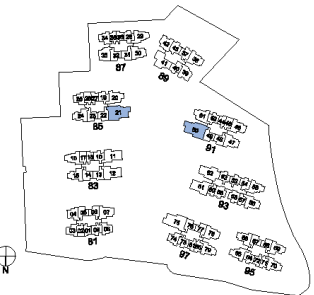
178 sqm / 1916 sqft (incl. void 22 sqm / 237 sqft)  
#18-21 (BLOCK 85)  
#18-50\* (BLOCK 91)



Dotted line denotes void area of 22 sqm / 237 sqft above living and dining for #18-21, #18-50



Plans are subject to change/amendments as may be required and/or approved by the Developer and/or the relevant authorities and do not form part of any offer or contract. These are not drawn to scale and are for the purpose of visual presentation only.



Plans are subject to change/amendments as may be required and/or approved by the Developer and/or the relevant authorities and do not form part of any offer or contract. These are not drawn to scale and are for the purpose of visual presentation only. \*Unit with mirror image.

# LOGAN

龙光地产

## BUILDING A BETTER LIFE

Established in 1996, Logan Property Holdings Company Limited is a well-renowned integrated real estate developer and was listed on the Hong Kong Stock Exchange in 2013. The Group has received Grade-A qualifications in property development, general construction contracting and engineering design. Over the years, the Group has built a strong track record in building numerous residential properties in China and is well-known for its quality developments in the Guangdong-Hong Kong-Macau Greater Bay Area, having developed 250 million square feet real estate.

To date, the Group is considered as one of the best property developers in China and has expanded its business to overseas markets such as Hong Kong and Singapore. Logan Property's mission of 'Building a Better Life' has led to the creation of over 150 residential projects and has improved the quality of over 600,000 lives. Logan Property has been awarded The Typical Projects of China Real Estate Developers Award from 2016-2018 for its work on the Great Bay Area of Guangdong-Hong Kong-Macau. The Group was ranked 26th in the China Top 100 Real Estate Developers, 3rd in Top 10 value investment stock and 266th in Fortune China's Top 500 Enterprises in 2018 - a testament to Logan Property's expertise and continuous commitment to excellence.

In Singapore, Logan Property's Stirling Residences has received 5 awards in the 2018 Property Guru's Asia Property Awards, including 'Best Condo Development (Singapore)', 'Best Private Condo Development' and 'Best Private Condo Architectural Design'.



Developer: Florence Development Pte. Limited • Company registration no.: 2017305016 • Lot/ Mulim no.: Lot, 09671C, 09673W MK 22 at Hougang Avenue 2 • Housing Developer's Licence no.: C1299 • Tenure of Land: Leasehold of 99 years commencing from 24 December 2018 • Encumbrances: Mortgage in Favour of United Overseas Bank Ltd • Expected date of Vacant Possession: 31 March 2023 • Expected date of Legal Completion: 31 March 2026

Disclaimer: While every reasonable care has been taken in preparing this brochure, the specifications and the attached plans, and in constructing the sales models and showflats, the Developer and its agents shall not be held responsible for any inaccuracies or omissions. All statements, specifications, information, descriptions and plans in this brochure are believed to be accurate at the time of publication but shall not be regarded or relied upon as statements or representations of fact. All information, specifications and plans are subject to change/amendments as may be required and/or approved by the Developer and/or the building authorities and other relevant authorities and do not form part of an offer or contract. Visual representations, illustrations, photographs, plans, site representations, sales models, awarded displays, pictures and other art renderings are only artists' impressions of the development and are not to be regarded or relied upon as statements and representations of fact. Photographs for images contained in this brochure do not necessarily represent as built standards/specifications. All areas are approximate measurements only and are subject to final survey. The property is subject to final inspection by the relevant authorities to comply with current codes of practice. The sale and purchase agreement shall form the entire agreement between the Developer and the purchaser and shall supersede all statements, representations or promises made prior to the signing of the sale and purchase agreement and shall in no way be modified by any such statements, representations or promises made.