

STUDIO

TYPE S1

38 sq m / 409 sq ft

Block 32

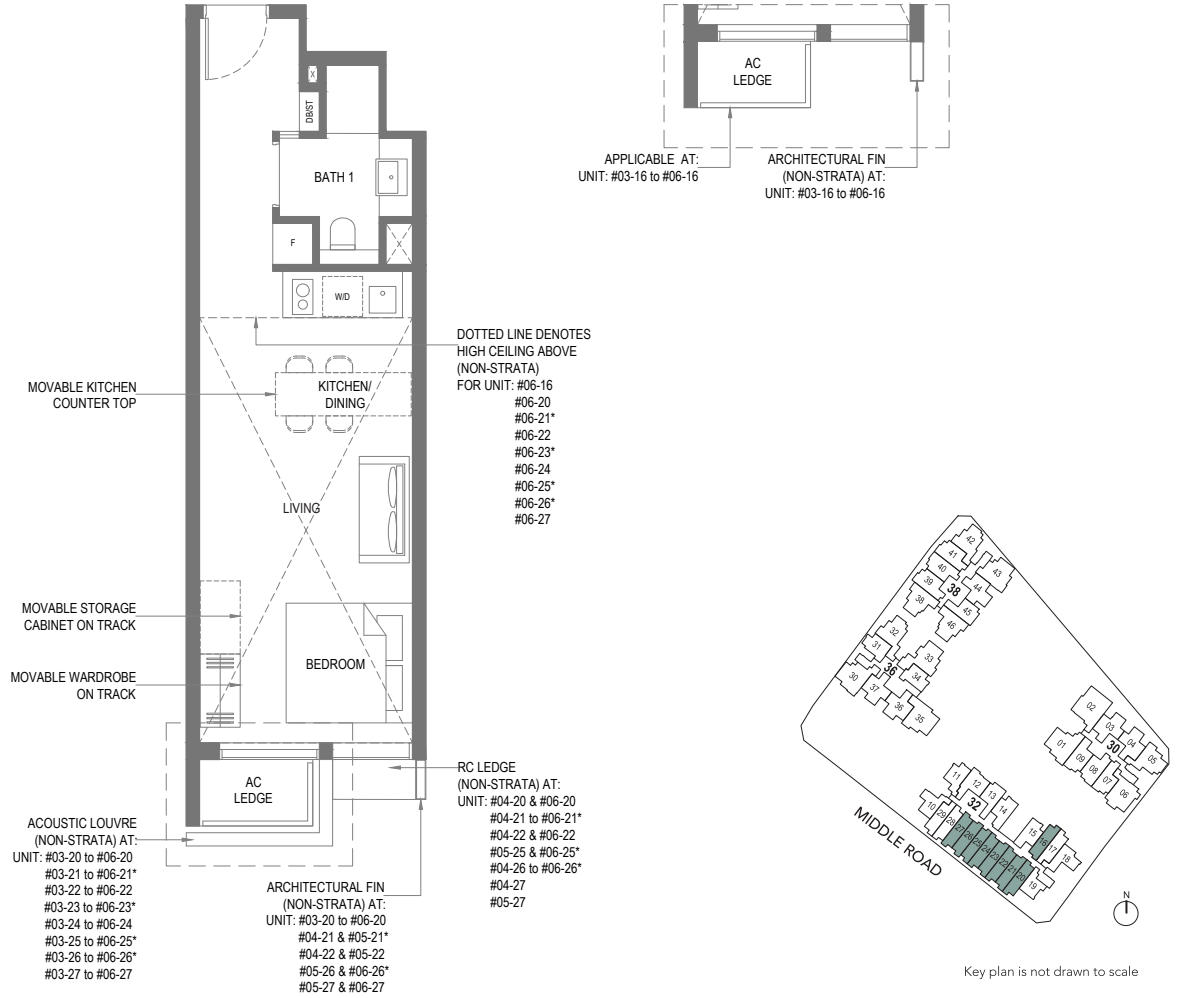
- #03-16 to #05-16
- #03-20 to #05-20
- #03-21 to #05-21*
- #03-22 to #05-22
- #03-23 to #05-23*
- #03-24 to #05-24
- #03-25 to #05-25*
- #03-26 to #05-26*
- #03-27 to #05-27

TYPE S1-R

38 sq m / 409 sq ft

Block 32

- #06-16 | #06-20 | #06-21*
- #06-22 | #06-23* | #06-24
- #06-25* | #06-26* | #06-27



STUDIO

TYPE S2

38 sq m / 409 sq ft

Block 32

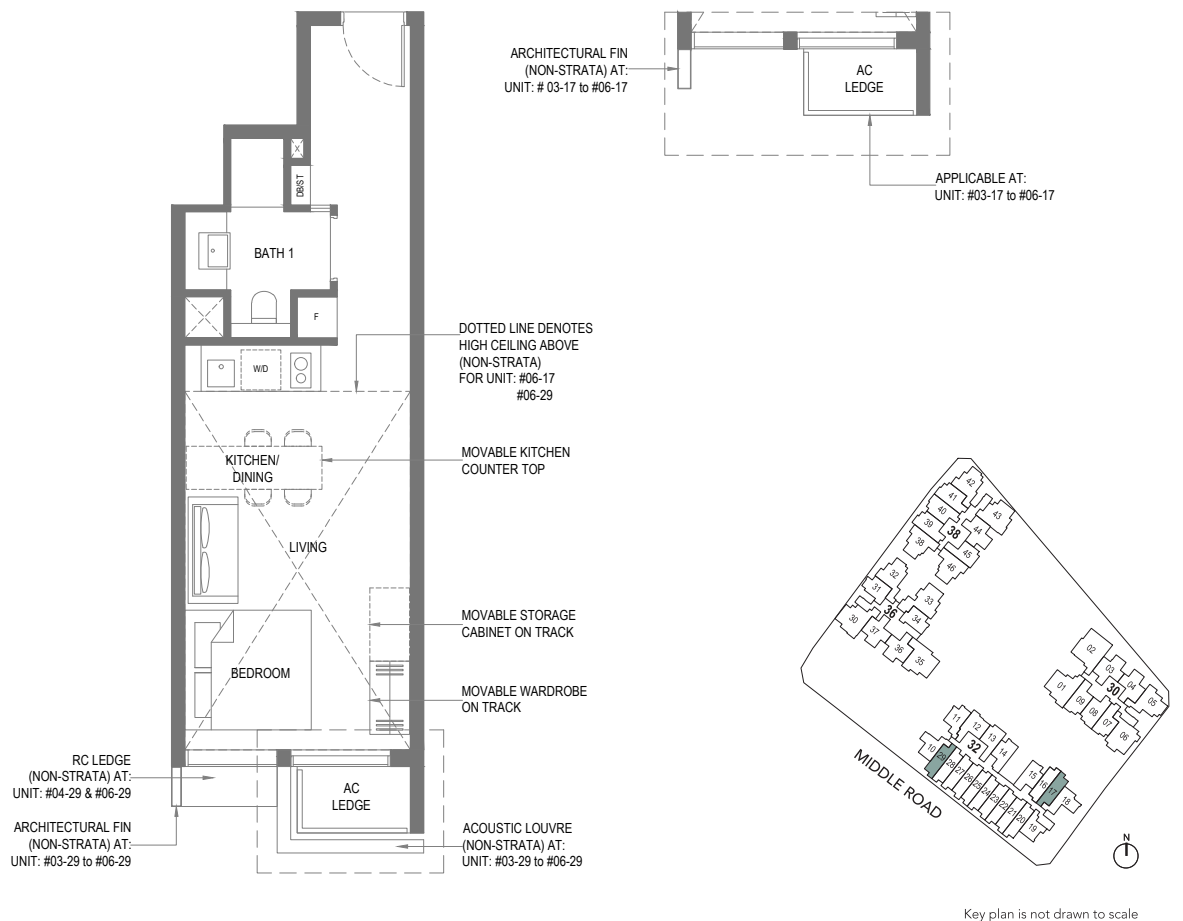
- #03-17 to #05-17
- #03-29 to #05-29

TYPE S2-R

38 sq m / 409 sq ft

Block 32

- #06-17 | #06-29



* Mirror Image



Area includes air-con (A/C) ledge, private enclosed space (PES), balcony and strata void area where applicable. Some Units are mirror images of the apartment plans shown in the brochure. Please refer to the key plan for orientation. The plans are subject to change as may be approved by relevant authorities. All floor plans are approximate measurements only and are subject to government re-survey. The PES and balcony shall not be enclosed unless with the approved balcony screen.

STUDIO

TYPE S3

39 sq m / 420 sq ft

Block 32

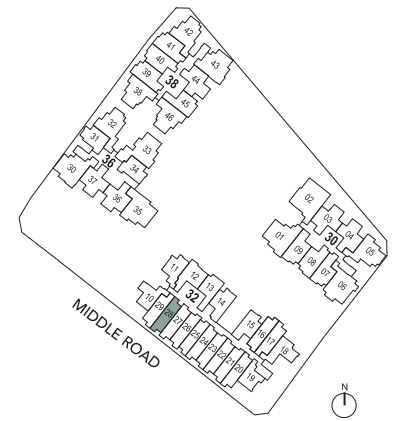
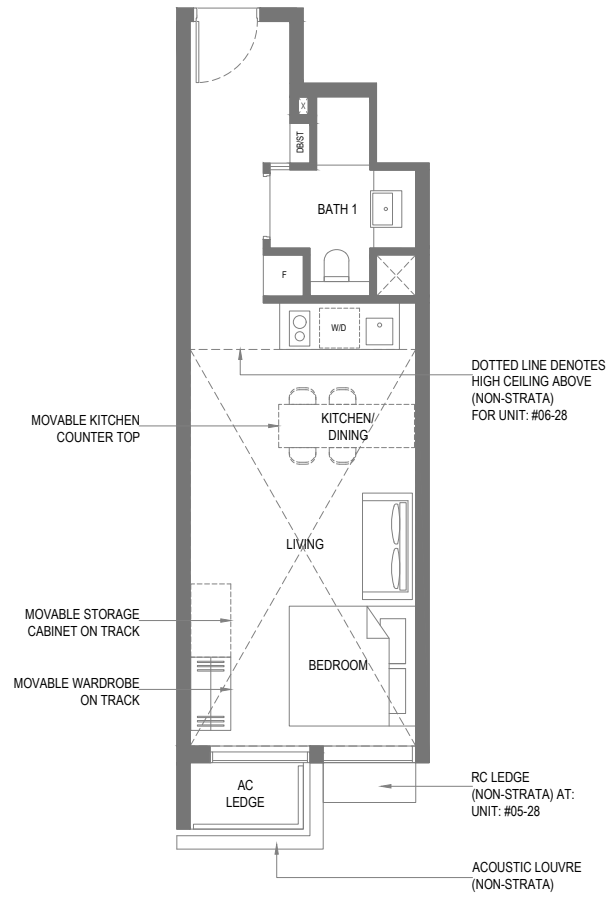
#03-28 to #05-28

TYPE S3-R

39 sq m / 420 sq ft

Block 32

#06-28



1-BEDROOM

TYPE A1

43 sq m / 463 sq ft

Block 38

#04-45 to #19-45

TYPE A1-R

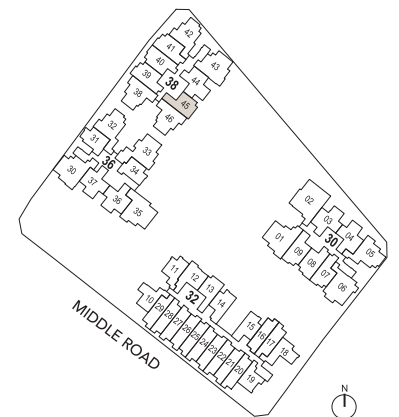
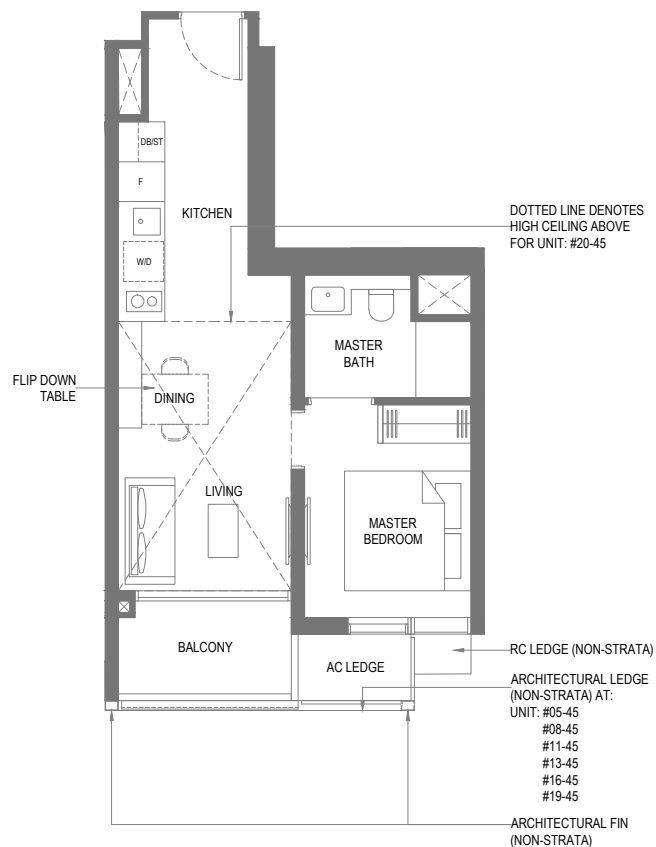
55 sq m / 592 sq ft

Including strata void area of 12 sq m / 129 sq ft above living and dining

Approximate 5 m floor to ceiling height at living and dining

Block 38

#20-45



Area includes air-con (A/C) ledge, private enclosed space (PES), balcony and strata void area where applicable. Some Units are mirror images of the apartment plans shown in the brochure. Please refer to the key plan for orientation. The plans are subject to change as may be approved by relevant authorities. All floor plans are approximate measurements only and are subject to government re-survey. The PES and balcony shall not be enclosed unless with the approved balcony screen.

1-BEDROOM

TYPE A2a

41 sq m / 441 sq ft

Block 36

#04-34 to #19-34

TYPE A2a-R

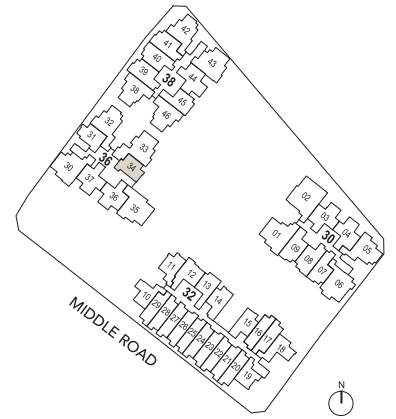
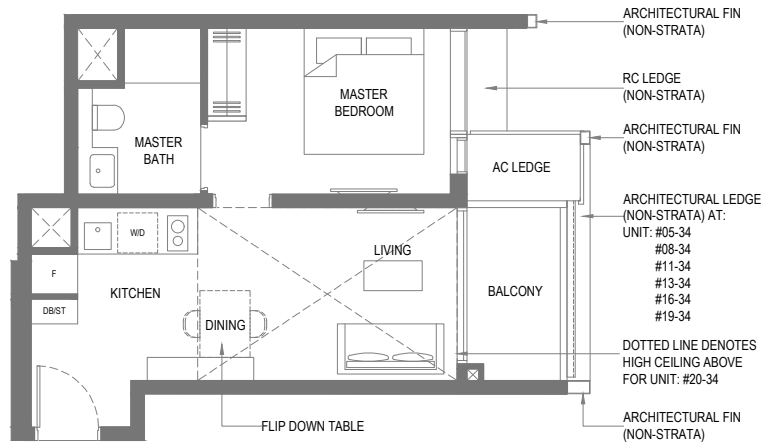
53 sq m / 570 sq ft

Including strata void area of 12 sq m / 129 sq ft above living and dining

Approximate 5 m floor to ceiling height at living and dining

Block 36

#20-34



Key plan is not drawn to scale

1-BEDROOM

TYPE A2b

40 sq m / 431 sq ft

Block 36

#04-31 to #19-31

TYPE A2b-R

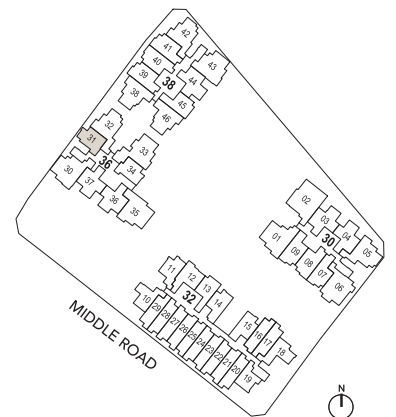
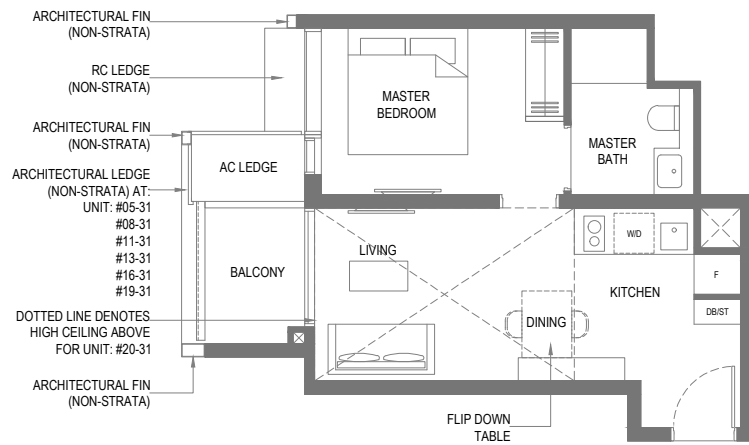
52 sq m / 560 sq ft

Including strata void area of 12 sq m / 129 sq ft above living and dining

Approximate 5 m floor to ceiling height at living and dining

Block 36

#20-31



Key plan is not drawn to scale



Area includes air-con (A/C) ledge, private enclosed space (PES), balcony and strata void area where applicable. Some Units are mirror images of the apartment plans shown in the brochure. Please refer to the key plan for orientation. The plans are subject to change as may be approved by relevant authorities. All floor plans are approximate measurements only and are subject to government re-survey. The PES and balcony shall not be enclosed unless with the approved balcony screen.

1-BEDROOM

TYPE A3-P

43 sq m / 463 sq ft

Block 32
#03-13

TYPE A3

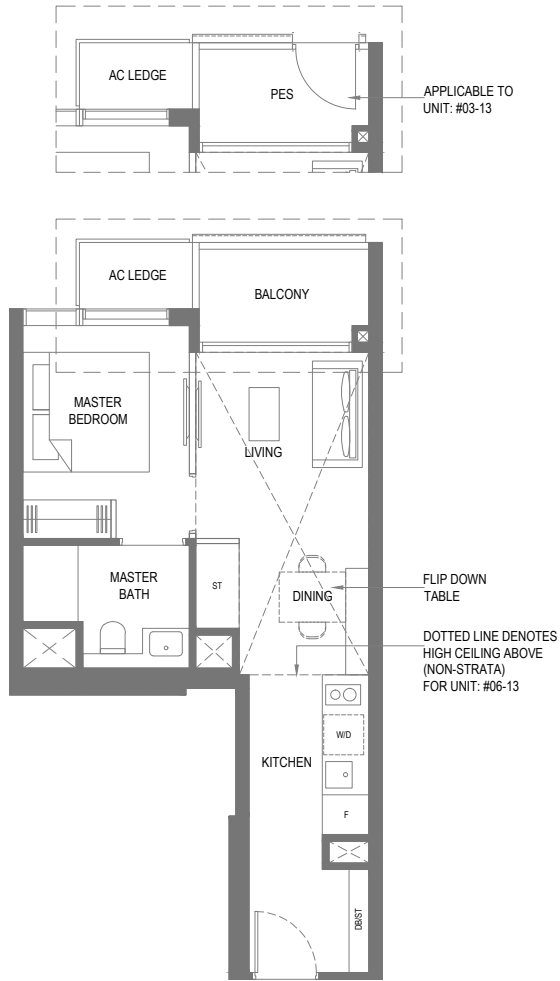
43 sq m / 463 sq ft

Block 32
#04-13 & #05-13

TYPE A3-R

43 sq m / 463 sq ft

Block 32
#06-13



1-BEDROOM

TYPE A4a-P

42 sq m / 452 sq ft

Block 32
#03-15

TYPE A4a

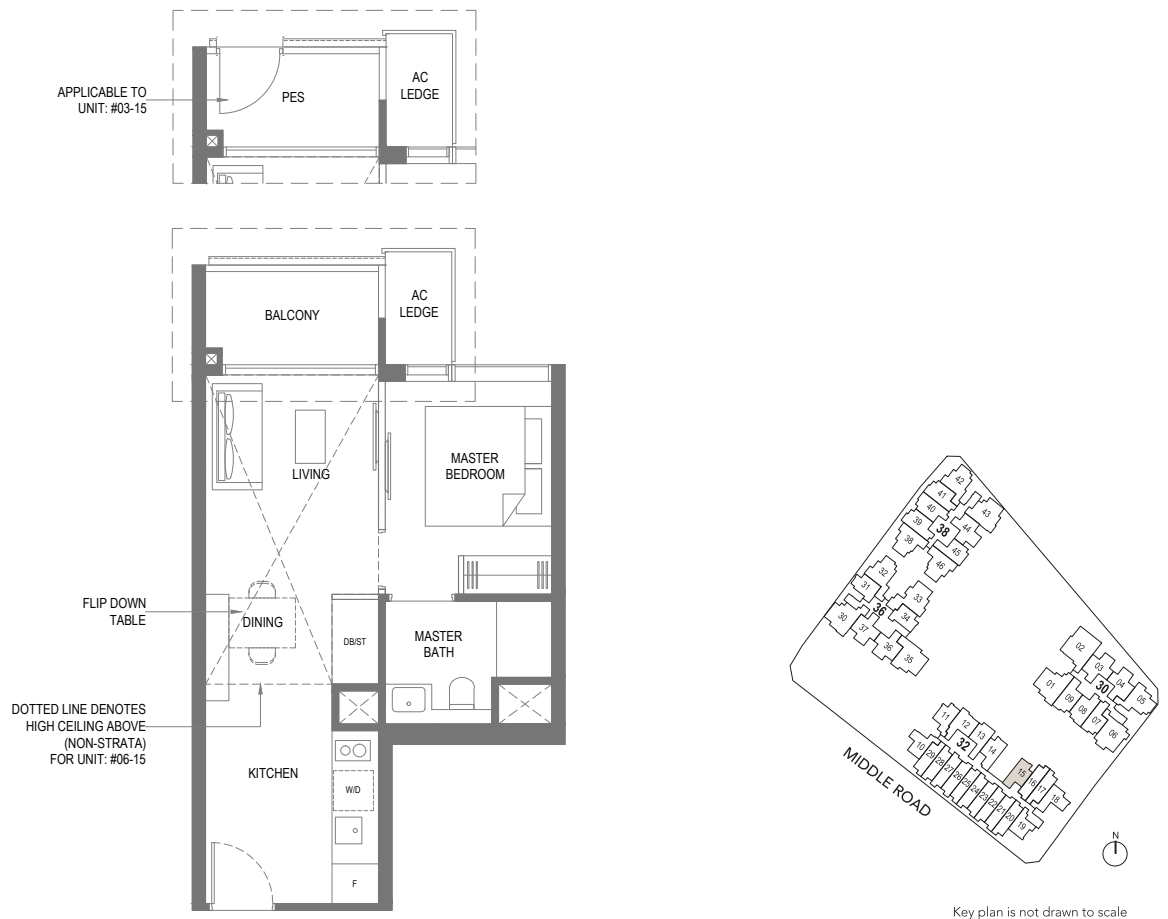
42 sq m / 452 sq ft

Block 32
#04-15 & #05-15

TYPE A4a-R

42 sq m / 452 sq ft

Block 32
#06-15



0 1 2 3 4 5M

Area includes air-con (A/C) ledge, private enclosed space (PES), balcony and strata void area where applicable. Some Units are mirror images of the apartment plans shown in the brochure. Please refer to the key plan for orientation. The plans are subject to change as may be approved by relevant authorities. All floor plans are approximate measurements only and are subject to government re-survey. The PES and balcony shall not be enclosed unless with the approved balcony screen.

1-BEDROOM

TYPE A4b-P

43 sq m / 463 sq ft

Block 32
#03-14

TYPE A4b

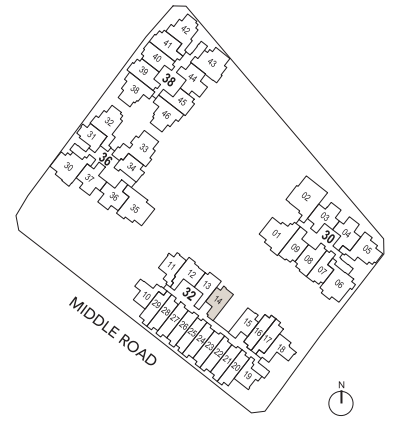
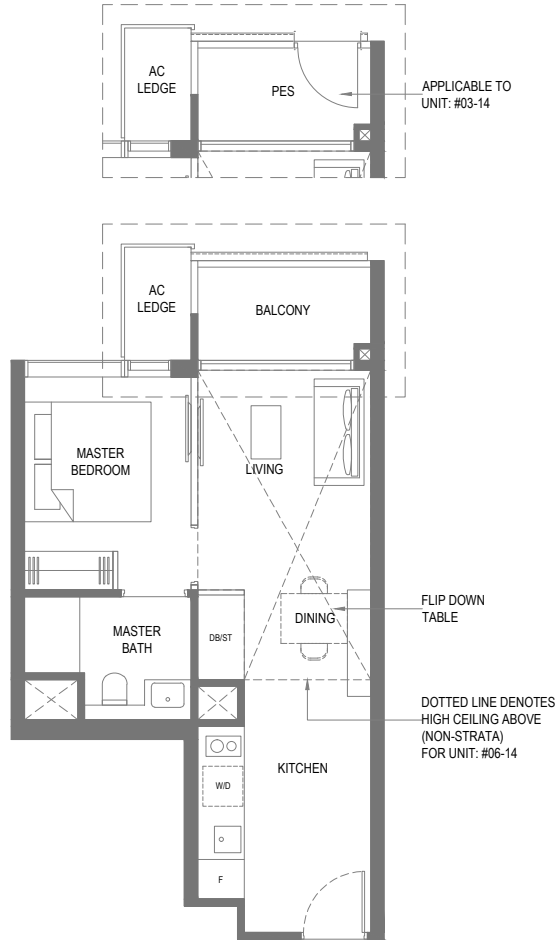
43 sq m / 463 sq ft

Block 32
#04-14 & #05-14

TYPE A4b-R

43 sq m / 463 sq ft

Block 32
#06-14



Key plan is not drawn to scale

1-BEDROOM

TYPE A5-P

46 sq m / 495 sq ft

Block 32
#03-18

TYPE A5

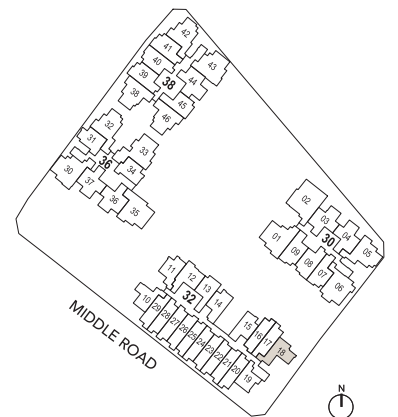
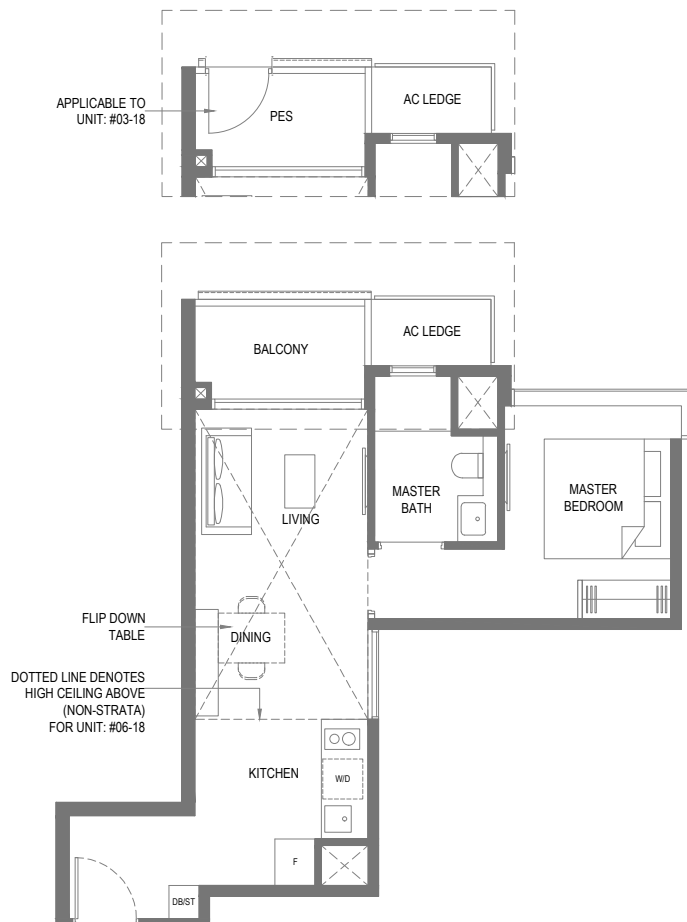
46 sq m / 495 sq ft

Block 32
#04-18 & #05-18

TYPE A5-R

46 sq m / 495 sq ft

Block 32
#06-18



Key plan is not drawn to scale



Area includes air-con (A/C) ledge, private enclosed space (PES), balcony and strata void area where applicable. Some Units are mirror images of the apartment plans shown in the brochure. Please refer to the key plan for orientation. The plans are subject to change as may be approved by relevant authorities. All floor plans are approximate measurements only and are subject to government re-survey. The PES and balcony shall not be enclosed unless with the approved balcony screen.

1-BEDROOM

TYPE A6

38 sq m / 409 sq ft

Block 32

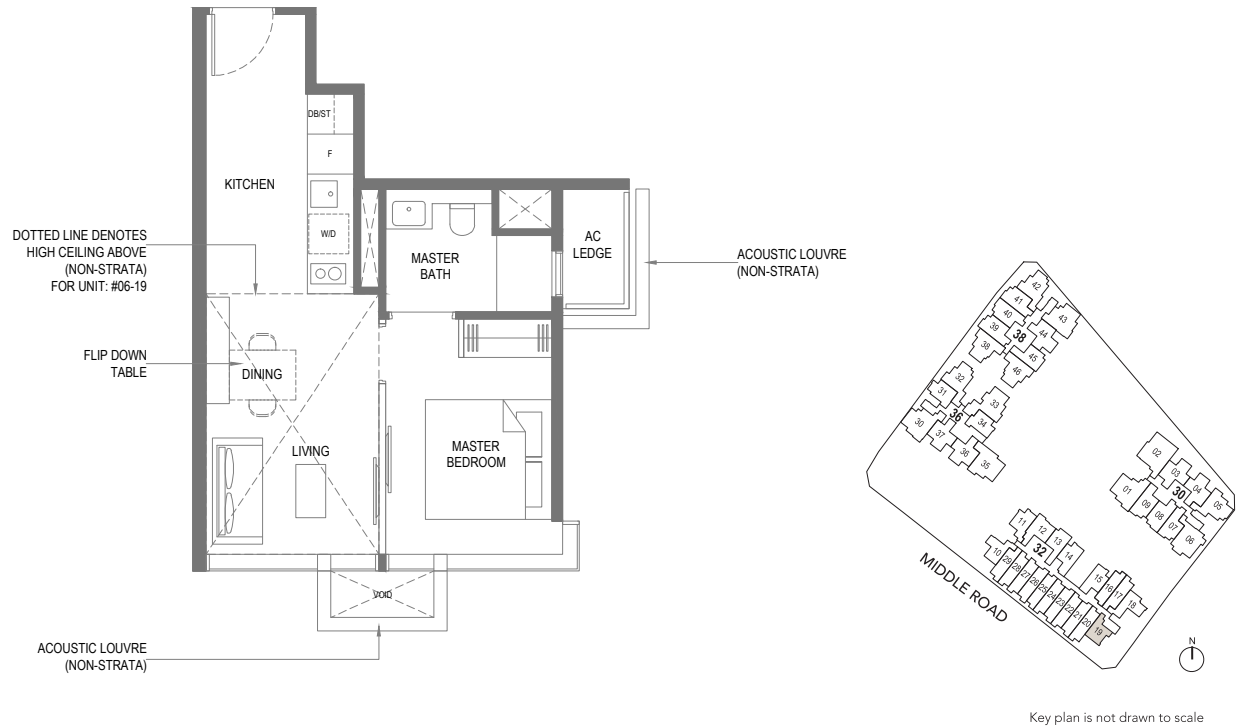
#03-19 to #05-19

TYPE A6-R

38 sq m / 409 sq ft

Block 32

#06-19



1-BEDROOM

TYPE A7-P

42 sq m / 452 sq ft

Block 32

#03-11

TYPE A7

42 sq m / 452 sq ft

Block 32

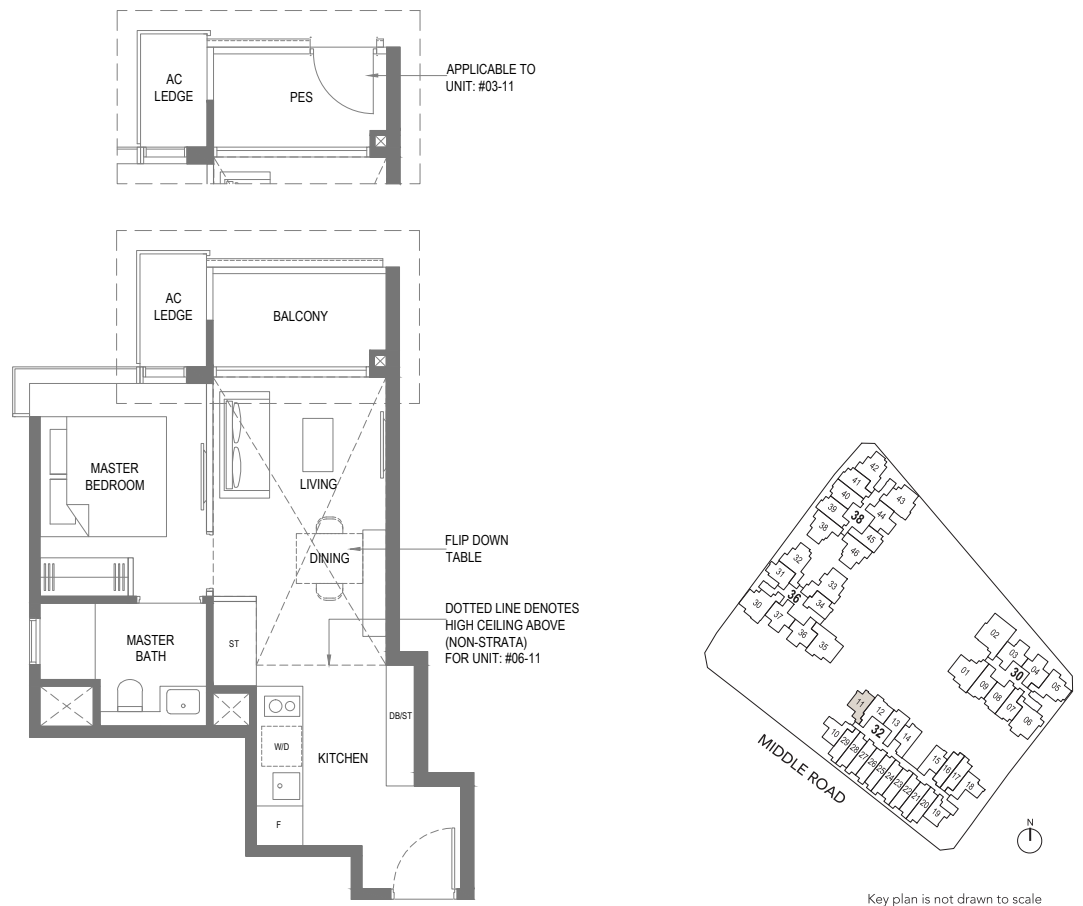
#04-11 & #05-11

TYPE A7-R

42 sq m / 452 sq ft

Block 32

#06-11



0 1 2 3 4 5M

Area includes air-con (A/C) ledge, private enclosed space (PES), balcony and strata void area where applicable. Some Units are mirror images of the apartment plans shown in the brochure. Please refer to the key plan for orientation. The plans are subject to change as may be approved by relevant authorities. All floor plans are approximate measurements only and are subject to government re-survey. The PES and balcony shall not be enclosed unless with the approved balcony screen.

1-BEDROOM

TYPE A8-P

42 sq m / 452 sq ft

Block 32

#03-10

TYPE A8

42 sq m / 452 sq ft

Block 32

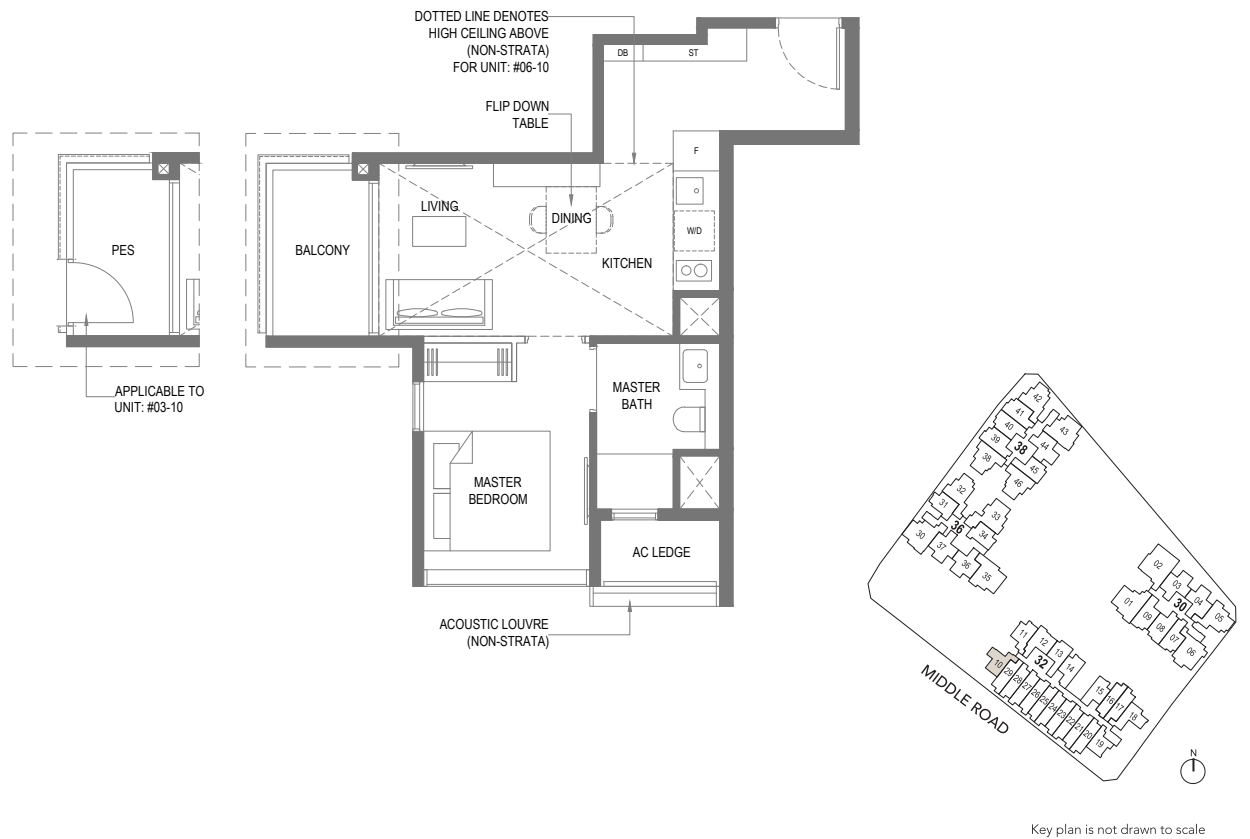
#04-10 & #05-10

TYPE A8-R

42 sq m / 452 sq ft

Block 32

#06-10



1-BEDROOM

TYPE A9

45 sq m / 484 sq ft

Block 30

#04-07 to #19-07

TYPE A9-R

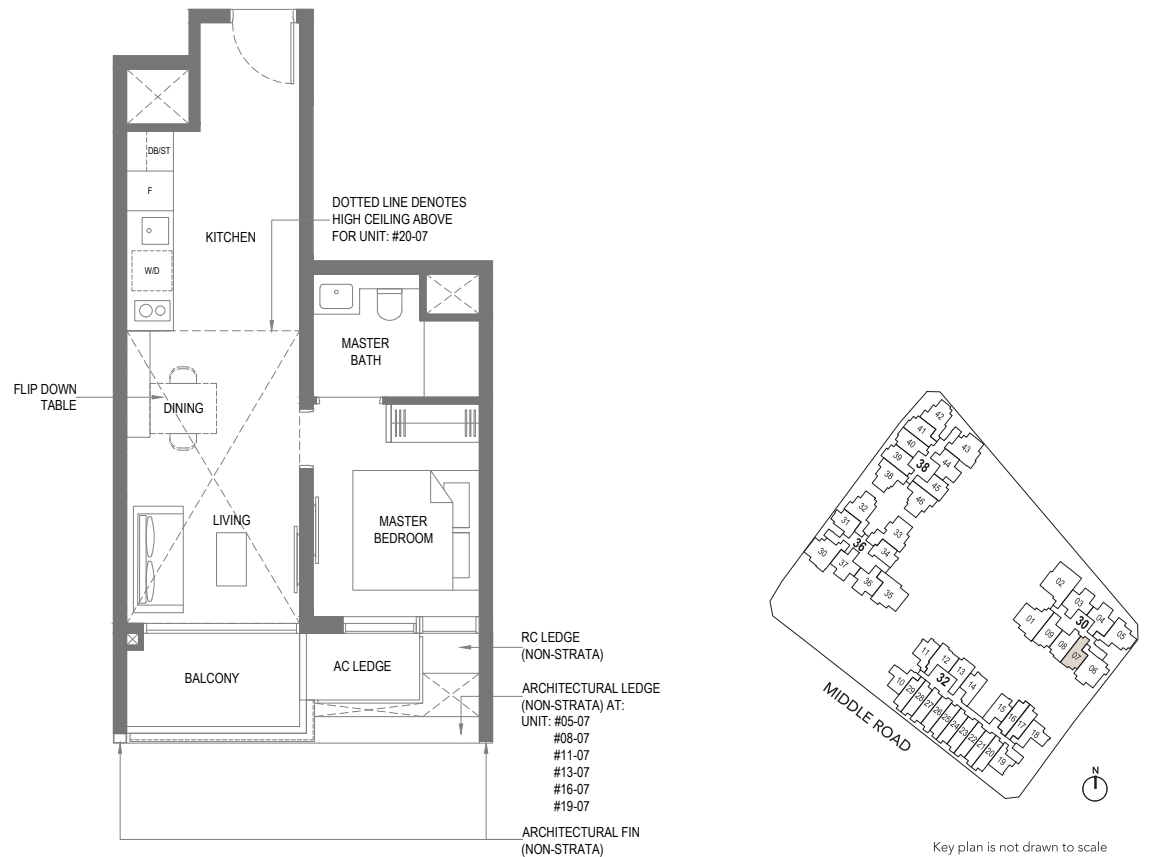
58 sq m / 624 sq ft

Including strata void area of 13 sq m / 140 sq ft above living and dining

Approximate 5 m floor to ceiling height at living and dining

Block 30

#20-07



Area includes air-con (A/C) ledge, private enclosed space (PES), balcony and strata void area where applicable. Some Units are mirror images of the apartment plans shown in the brochure. Please refer to the key plan for orientation. The plans are subject to change as may be approved by relevant authorities. All floor plans are approximate measurements only and are subject to government re-survey. The PES and balcony shall not be enclosed unless with the approved balcony screen.

1-BEDROOM + STUDY

TYPE AS1

49 sq m / 527 sq ft

Block 30

#04-08 to #19-08*
#04-09 to #19-09

Block 38

#04-39 to #19-39*
#04-40 to #19-40
#04-41 to #19-41*

TYPE AS1-R

61 sq m / 657 sq ft

Including strata void area of
12 sq m / 129 sq ft above
living and dining

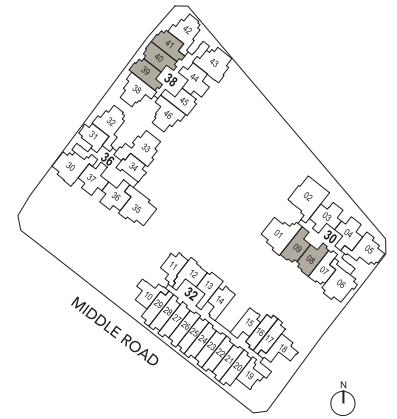
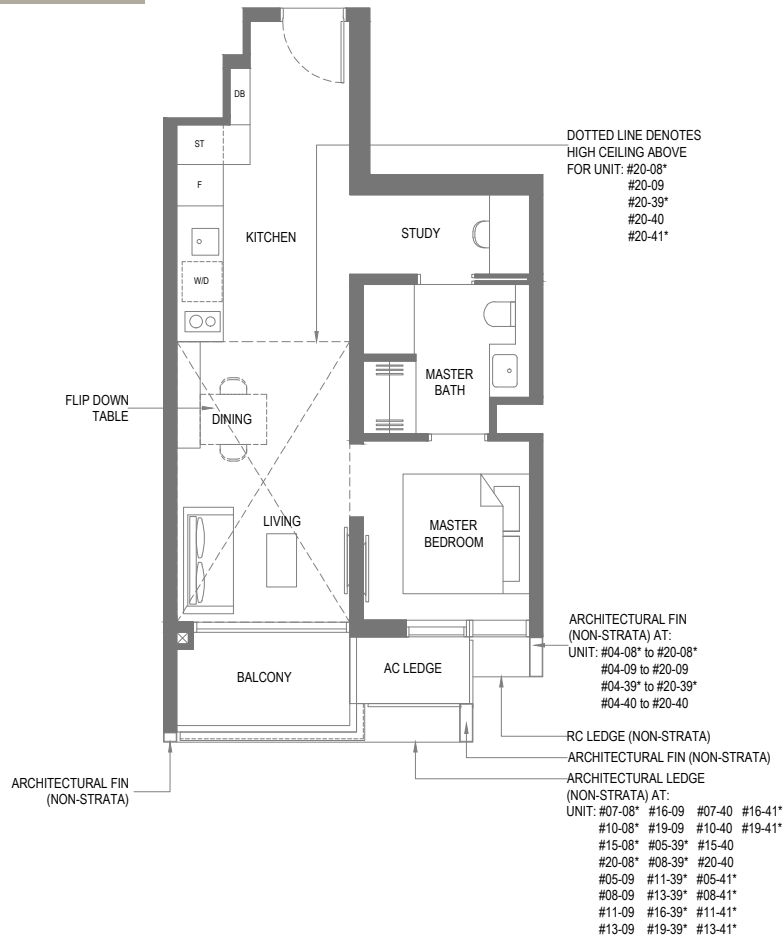
Approximate 5 m floor to
ceiling height at living
and dining

Block 30

#20-08* | #20-09

Block 38

#20-39* | #20-40 | #20-41*



1-BEDROOM + STUDY

TYPE AS2-P

49 sq m / 527 sq ft

Block 32

#03-12

TYPE AS2

49 sq m / 527 sq ft

Block 32

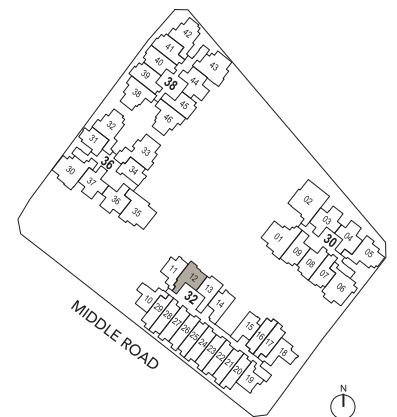
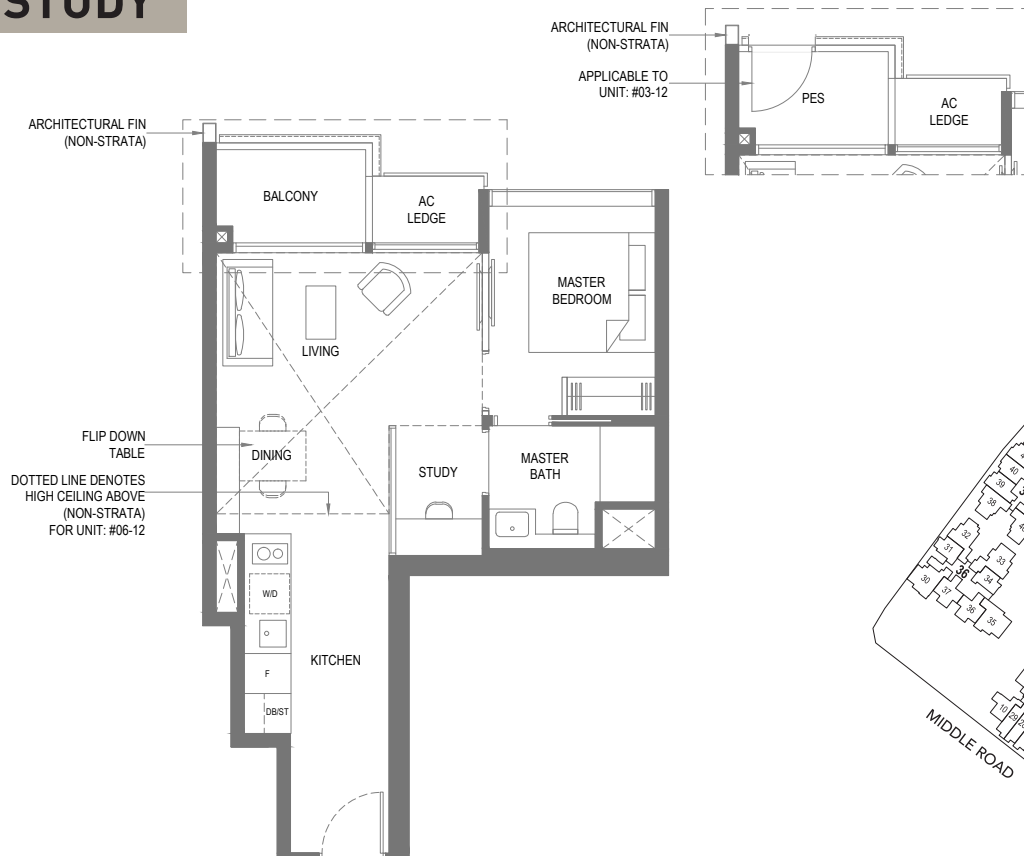
#04-12 & #05-12

TYPE AS2-R

49 sq m / 527 sq ft

Block 32

#06-12



* Mirror Image



Area includes air-con (A/C) ledge, private enclosed space (PES), balcony and strata void area where applicable. Some Units are mirror images of the apartment plans shown in the brochure. Please refer to the key plan for orientation. The plans are subject to change as may be approved by relevant authorities. All floor plans are approximate measurements only and are subject to government re-survey. The PES and balcony shall not be enclosed unless with the approved balcony screen.

2-BEDROOM

TYPE B1

62 sq m / 667 sq ft

Block 36

#04-32 to #19-32

TYPE B1-R

78 sq m / 840 sq ft

Including strata void area of 16 sq m / 172 sq ft above living and dining

Approximate 5 m floor to ceiling height at living and dining

Block 36

#20-32



2-BEDROOM

TYPE B2

55 sq m / 592 sq ft

Block 36

#04-36 to #19-36*
#04-37 to #19-37

TYPE B2-R

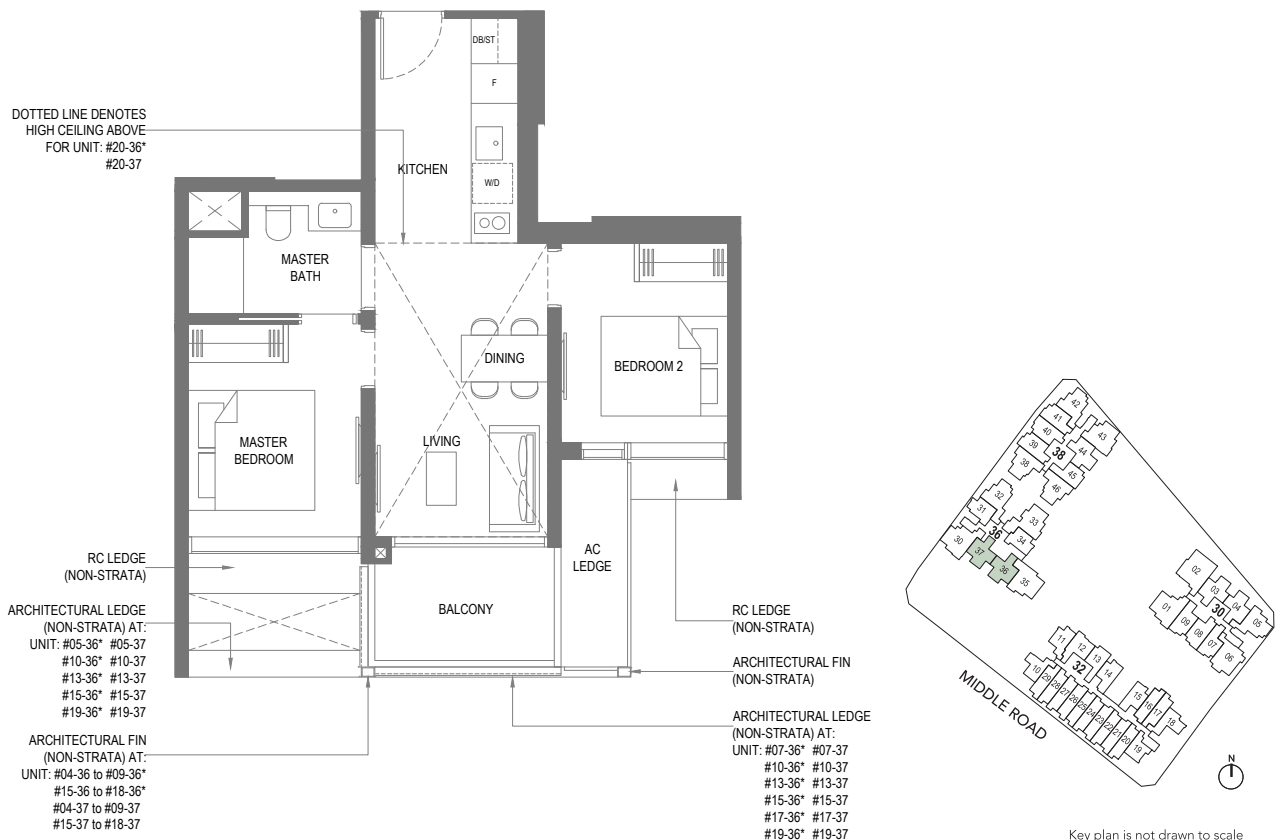
69 sq m / 743 sq ft

Including strata void area of 14 sq m / 151 sq ft above living and dining

Approximate 5 m floor to ceiling height at living and dining

Block 36

#20-36* | #20-37



* Mirror Image



Area includes air-con (A/C) ledge, private enclosed space (PES), balcony and strata void area where applicable. Some Units are mirror images of the apartment plans shown in the brochure. Please refer to the key plan for orientation. The plans are subject to change as may be approved by relevant authorities. All floor plans are approximate measurements only and are subject to government re-survey. The PES and balcony shall not be enclosed unless with the approved balcony screen.

2-BEDROOM

TYPE B3

57 sq m / 614 sq ft

Block 38

#04-38 to #19-38
#04-46 to #19-46*

TYPE B3-R

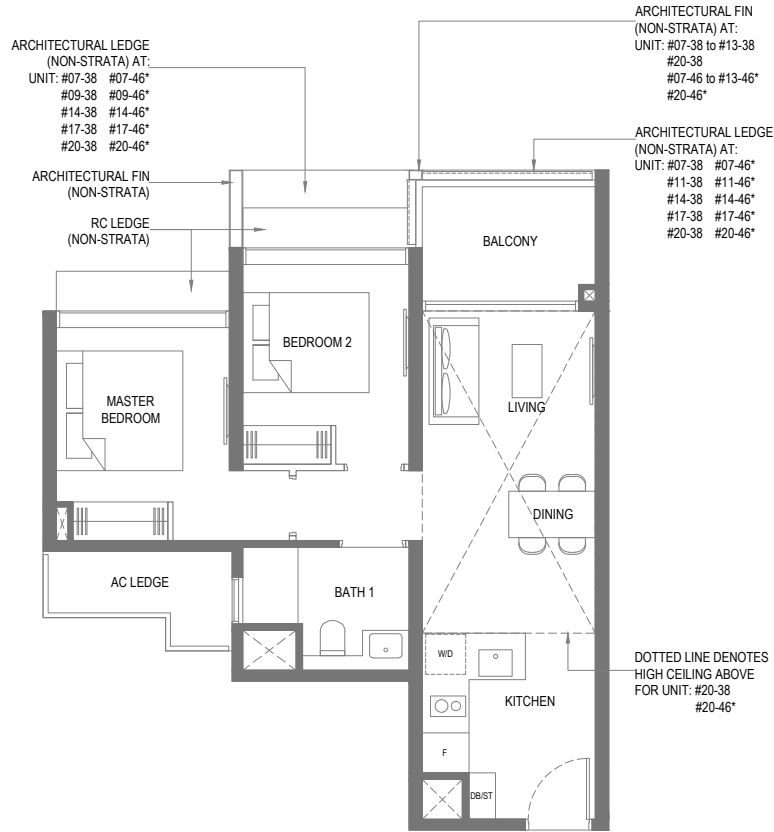
71 sq m / 764 sq ft

Including strata void area of
14 sq m / 151 sq ft above
living and dining

Approximate 5 m floor to
ceiling height at living
and dining

Block 38

#20-38 | #20-46*



Key plan is not drawn to scale

2-BEDROOM

TYPE B4

59 sq m / 635 sq ft

Block 38

#04-42 to #19-42

TYPE B4-R

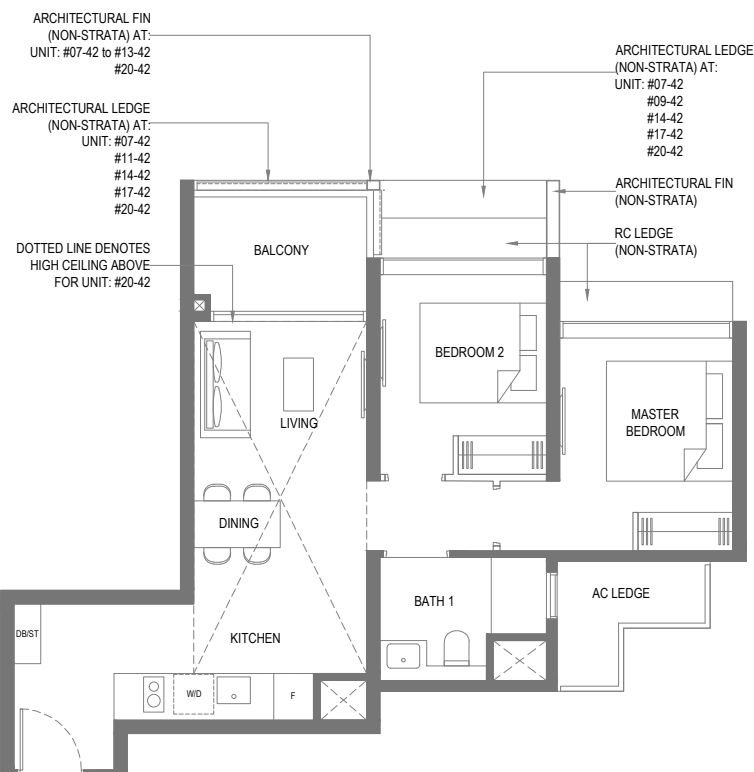
74 sq m / 797 sq ft

Including strata void area of
15 sq m / 161 sq ft above
living, dining and kitchen

Approximate 5 m floor to
ceiling height at living,
dining and kitchen

Block 38

#20-42



Key plan is not drawn to scale

* Mirror Image



Area includes air-con (A/C) ledge, private enclosed space (PES), balcony and strata void area where applicable. Some Units are mirror images of the apartment plans shown in the brochure. Please refer to the key plan for orientation. The plans are subject to change as may be approved by relevant authorities. All floor plans are approximate measurements only and are subject to government re-survey. The PES and balcony shall not be enclosed unless with the approved balcony screen.

2-BEDROOM

TYPE B5

55 sq m / 592 sq ft

Block 30

#04-03 to #19-03*
#04-04 to #19-04

TYPE B5-R

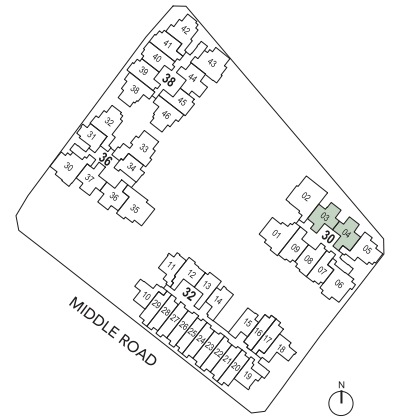
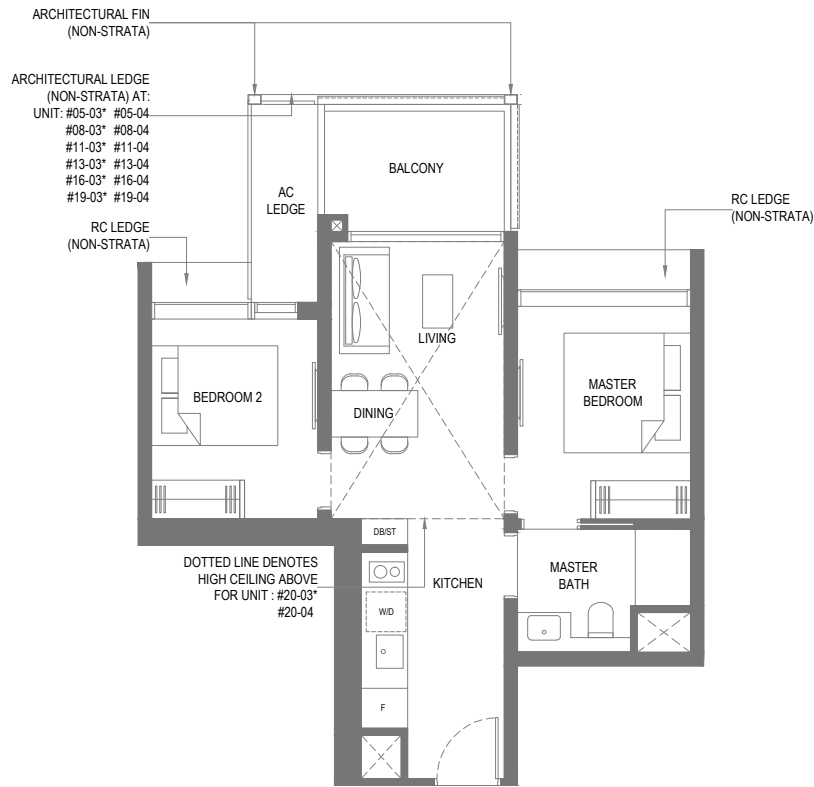
68 sq m / 732 sq ft

Including strata void area of
13 sq m / 140 sq ft above
living and dining

Approximate 5 m floor to
ceiling height at living
and dining

Block 30

#20-03* | #20-04



Key plan is not drawn to scale

2-BEDROOM

TYPE B6

55 sq m / 592 sq ft

Block 38

#04-44 to #19-44

TYPE B6-R

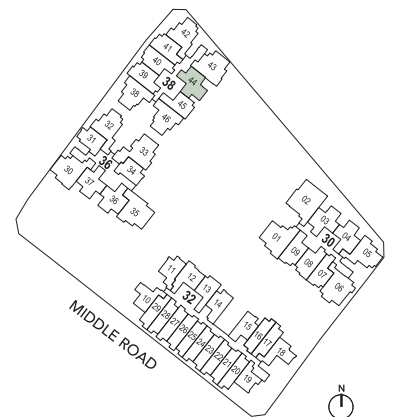
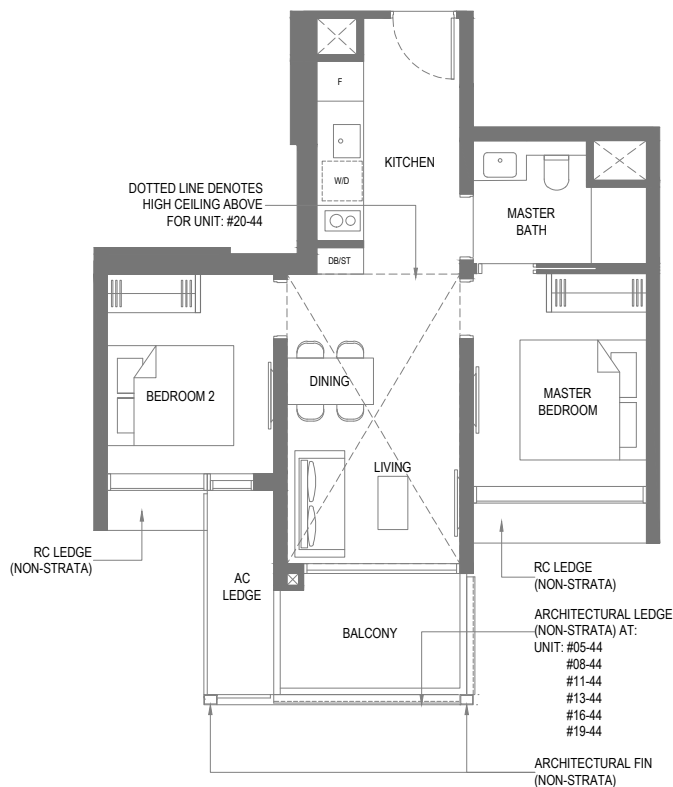
68 sq m / 732 sq ft

Including strata void area of
13 sq m / 140 sq ft above
living and dining

Approximate 5 m floor to
ceiling height at living
and dining

Block 38

#20-44



Key plan is not drawn to scale

* Mirror Image



Area includes air-con (A/C) ledge, private enclosed space (PES), balcony and strata void area where applicable. Some Units are mirror images of the apartment plans shown in the brochure. Please refer to the key plan for orientation. The plans are subject to change as may be approved by relevant authorities. All floor plans are approximate measurements only and are subject to government re-survey. The PES and balcony shall not be enclosed unless with the approved balcony screen.

2-BEDROOM

TYPE B7

59 sq m / 635 sq ft

Block 30

#04-05 to #19-05

TYPE B7-R

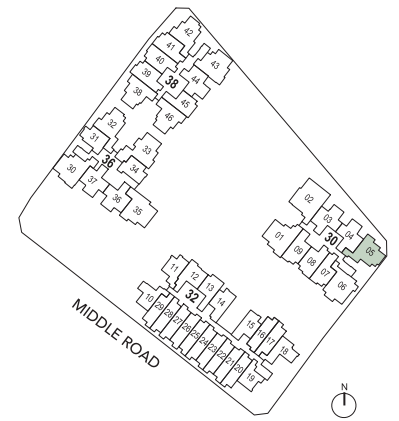
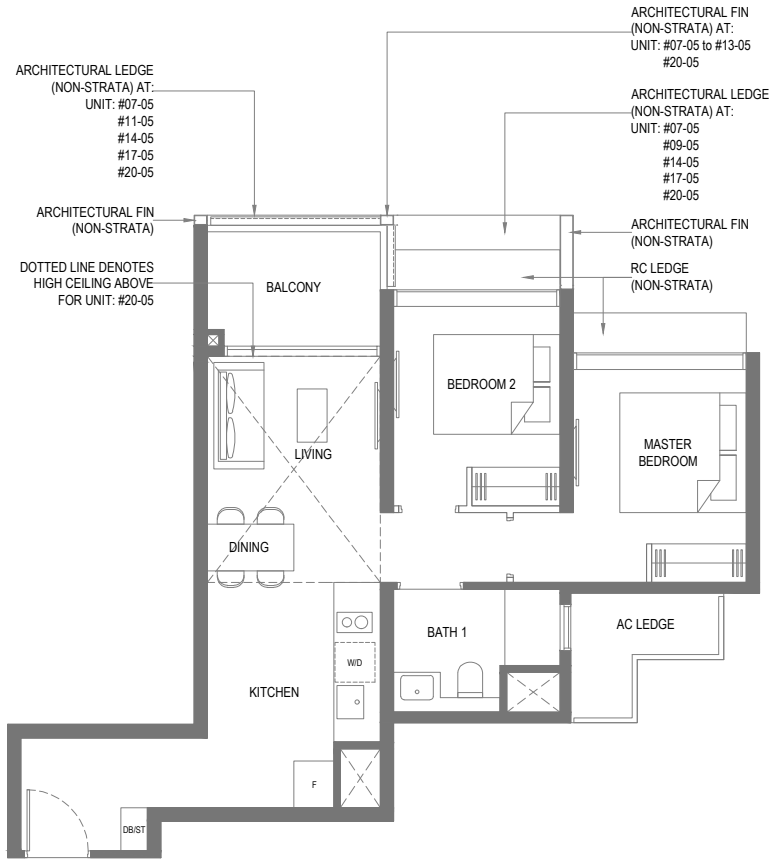
69 sq m / 743 sq ft

Including strata void area of 10 sq m / 108 sq ft above living and dining

Approximate 5 m floor to ceiling height at living and dining

Block 30

#20-05



Key plan is not drawn to scale

2-BEDROOM + STUDY

TYPE BS1

71 sq m / 764 sq ft

Block 36

#04-30 to #19-30

TYPE BS1-R

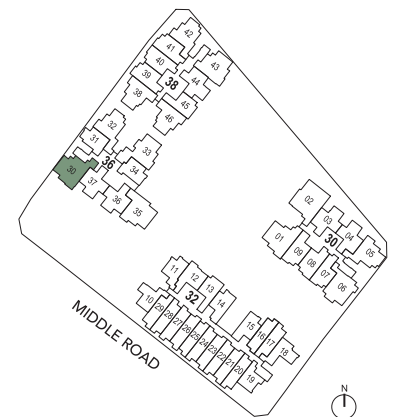
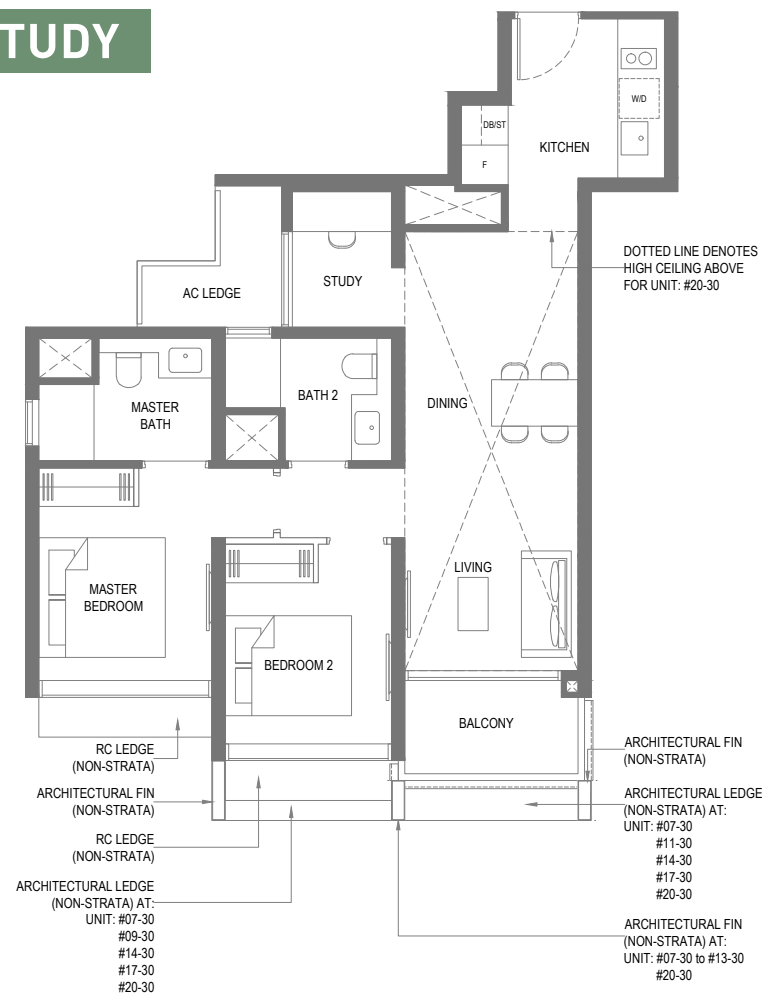
91 sq m / 980 sq ft

Including strata void area of 20 sq m / 215 sq ft above living and dining

Approximate 5 m floor to ceiling height at living and dining

Block 36

#20-30



Key plan is not drawn to scale



Area includes air-con (A/C) ledge, private enclosed space (PES), balcony and strata void area where applicable. Some Units are mirror images of the apartment plans shown in the brochure. Please refer to the key plan for orientation. The plans are subject to change as may be approved by relevant authorities. All floor plans are approximate measurements only and are subject to government re-survey. The PES and balcony shall not be enclosed unless with the approved balcony screen.

2-BEDROOM + STUDY

TYPE BS2

69 sq m / 743 sq ft

Block 36

#04-35 to #19-35

TYPE BS2-R

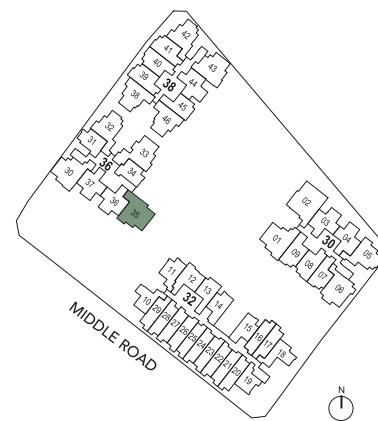
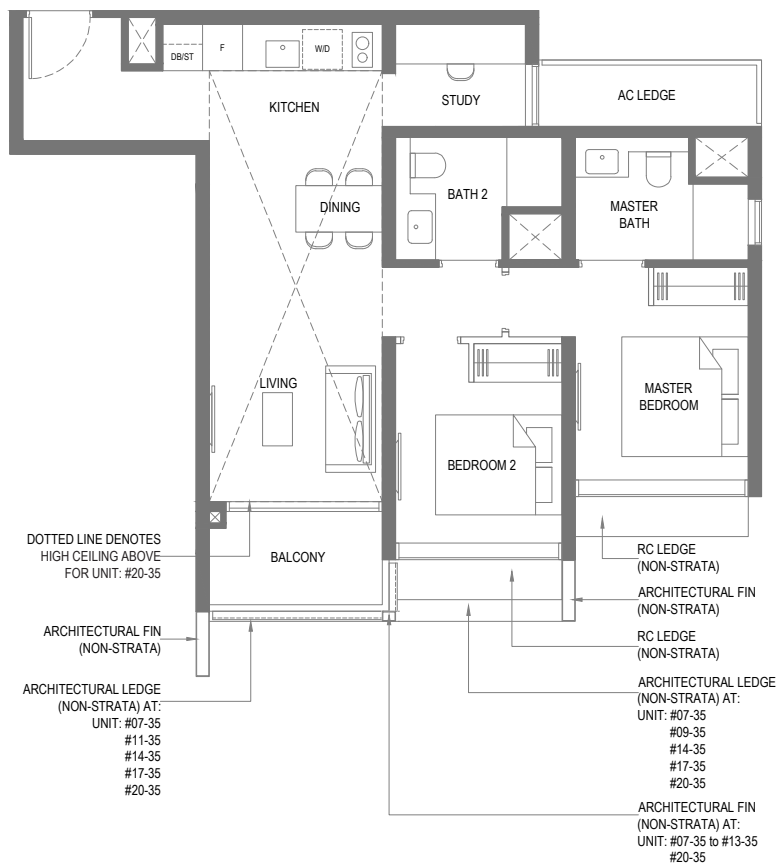
88 sq m / 947 sq ft

Including strata void area of 19 sq m / 205 sq ft above living, dining and kitchen

Approximate 5 m floor to ceiling height at living, dining and kitchen

Block 36

#20-35



Key plan is not drawn to scale

2-BEDROOM + STUDY

TYPE BS3

70 sq m / 753 sq ft

Block 36

#04-33 to #19-33

TYPE BS3-R

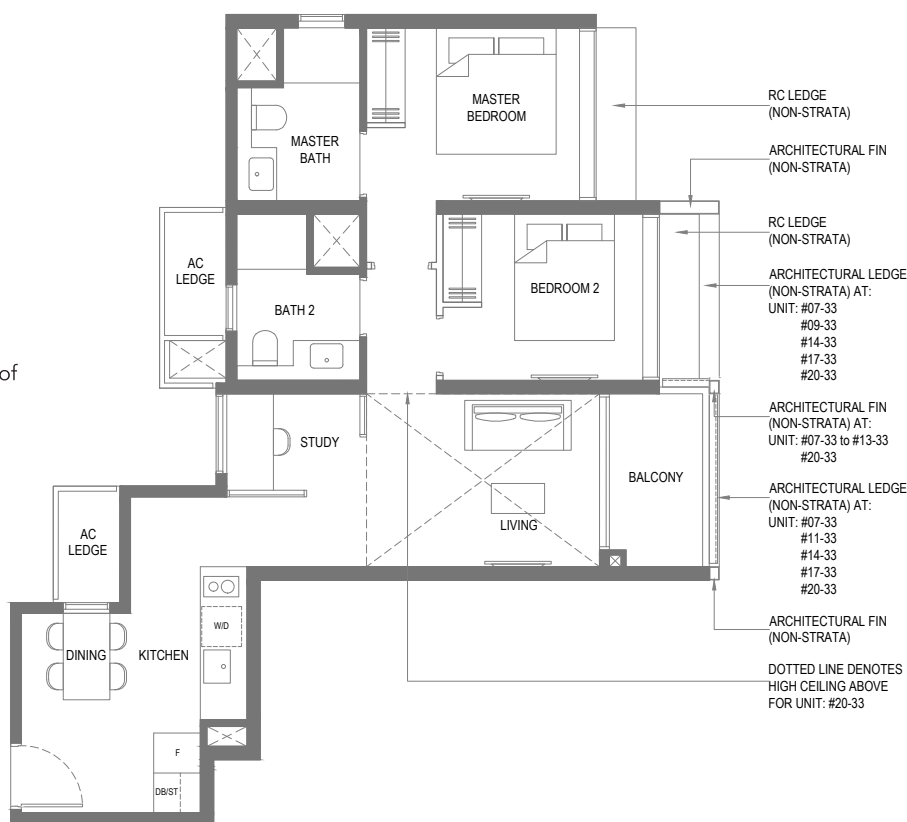
80 sq m / 861 sq ft

Including strata void area of 10 sq m / 108 sq ft above living

Approximate 5 m floor to ceiling height at living

Block 36

#20-33



Key plan is not drawn to scale



Area includes air-con (A/C) ledge, private enclosed space (PES), balcony and strata void area where applicable. Some Units are mirror images of the apartment plans shown in the brochure. Please refer to the key plan for orientation. The plans are subject to change as may be approved by relevant authorities. All floor plans are approximate measurements only and are subject to government re-survey. The PES and balcony shall not be enclosed unless with the approved balcony screen.

2-BEDROOM + STUDY

TYPE BS4

67 sq m / 721 sq ft

Block 38

#04-43 to #19-43

TYPE BS4-R

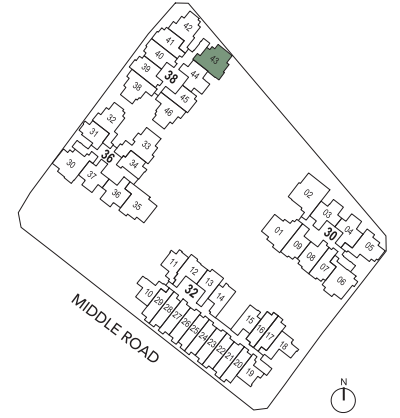
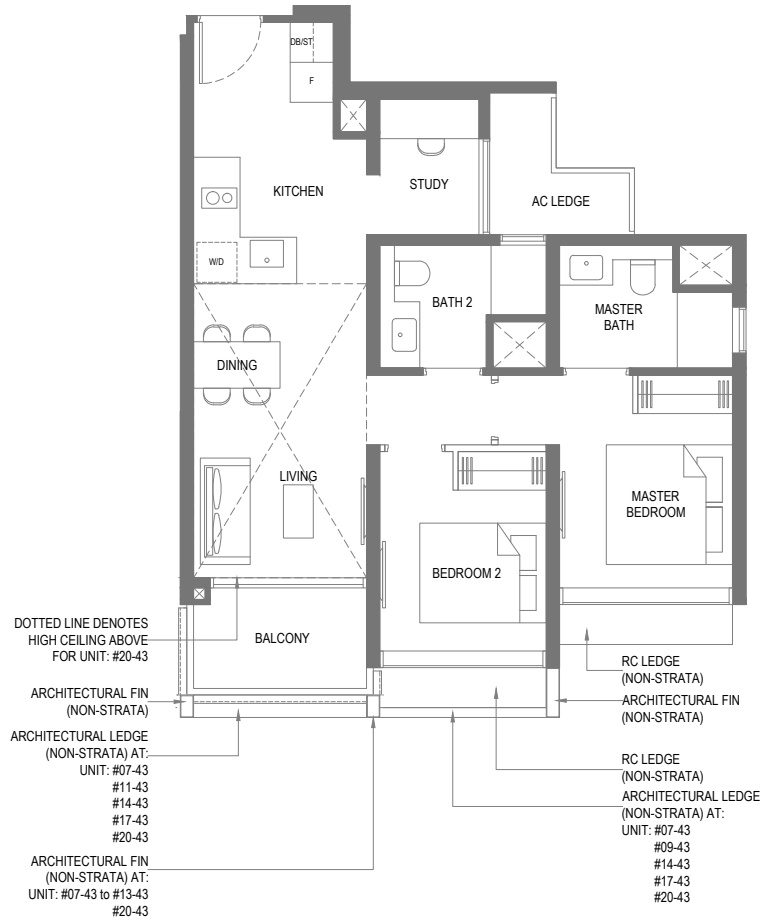
80 sq m / 861 sq ft

Including strata void area of 13 sq m / 140 sq ft above living and dining

Approximate 5 m floor to ceiling height at living and dining

Block 38

#20-43



2-BEDROOM + STUDY

TYPE BS5

69 sq m / 743 sq ft

Block 30

#04-01 to #19-01

TYPE BS5-R

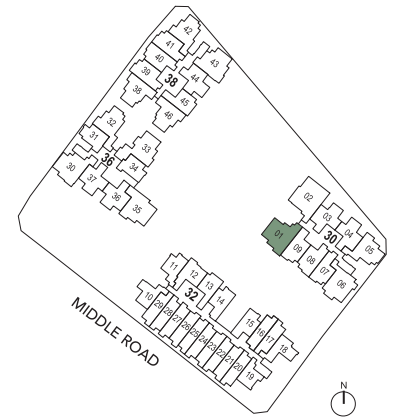
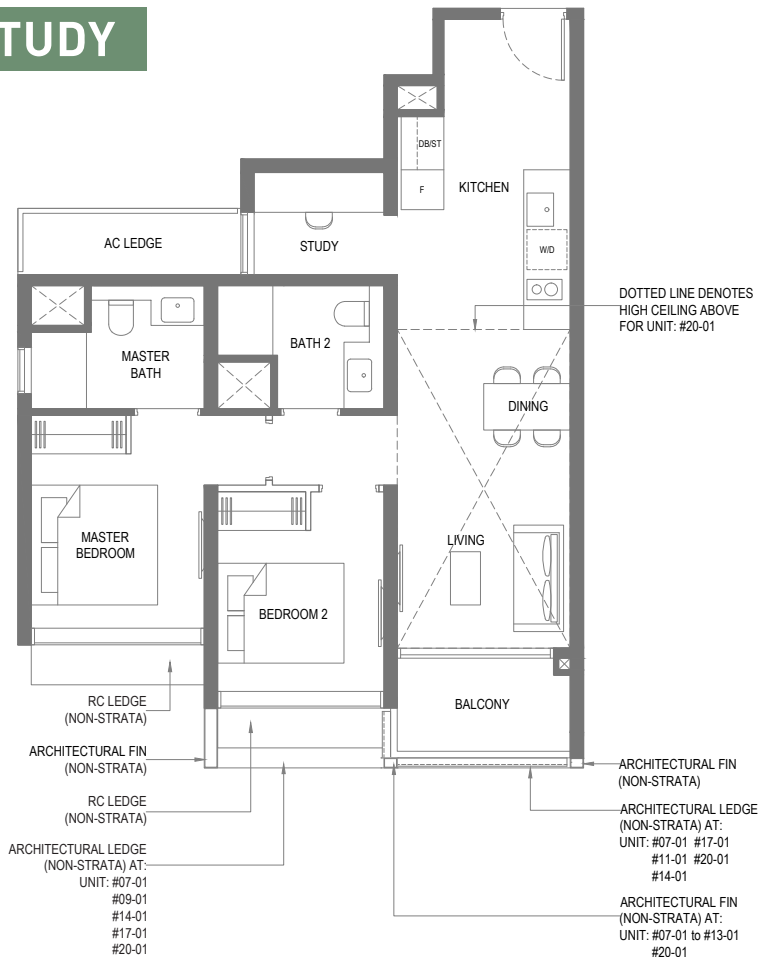
83 sq m / 893 sq ft

Including strata void area of 14 sq m / 151 sq ft above living and dining

Approximate 5 m floor to ceiling height at living and dining

Block 30

#20-01



Area includes air-con (A/C) ledge, private enclosed space (PES), balcony and strata void area where applicable. Some Units are mirror images of the apartment plans shown in the brochure. Please refer to the key plan for orientation. The plans are subject to change as may be approved by relevant authorities. All floor plans are approximate measurements only and are subject to government re-survey. The PES and balcony shall not be enclosed unless with the approved balcony screen.

2-BEDROOM + STUDY

TYPE BS6

68 sq m / 732 sq ft

Block 30

#04-06 to #19-06

TYPE BS6-R

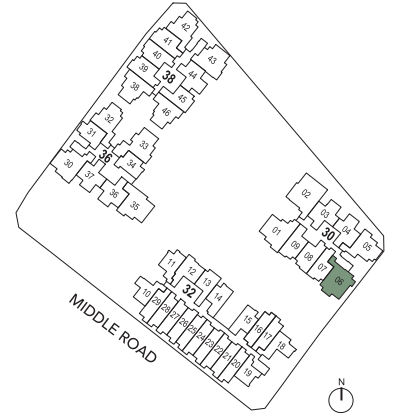
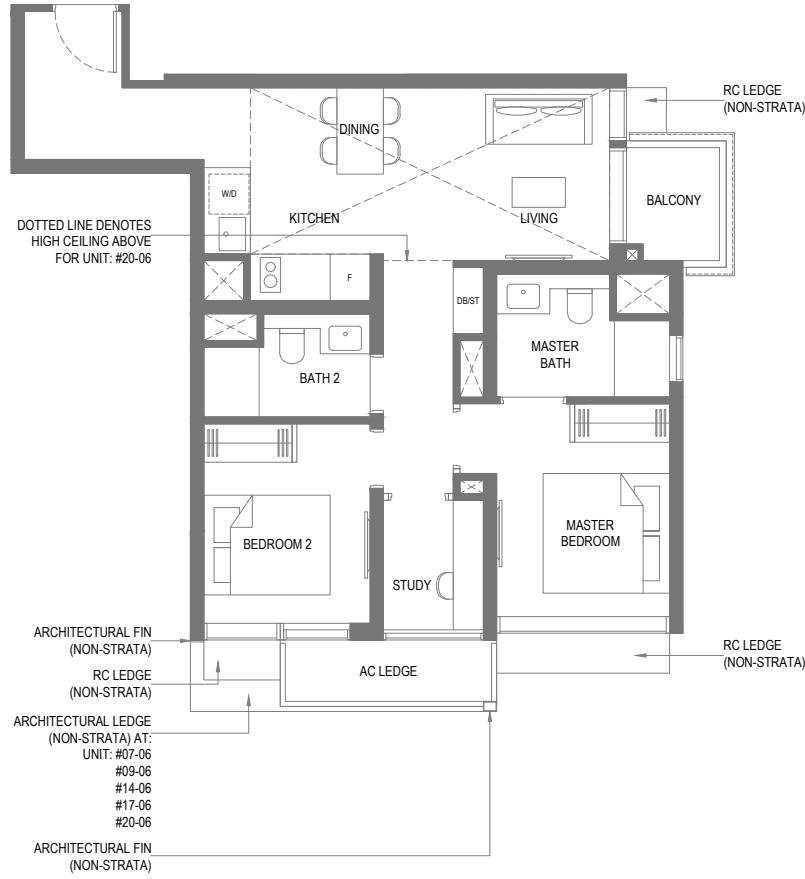
84 sq m / 904 sq ft

Including strata void area of 16 sq m / 172 sq ft above living, dining and kitchen

Approximate 5 m floor to ceiling height at living, dining and kitchen

Block 30

#20-06



3-BEDROOM DUAL KEY

TYPE C1

84 sq m / 904 sq ft

Block 30

#04-02 to #19-02

TYPE C1-R

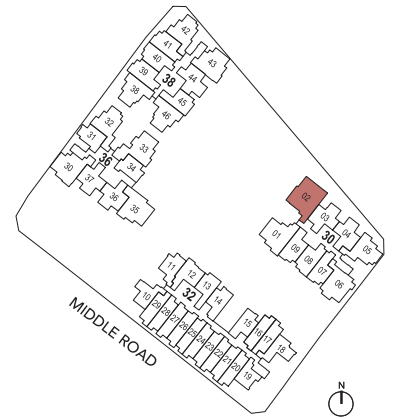
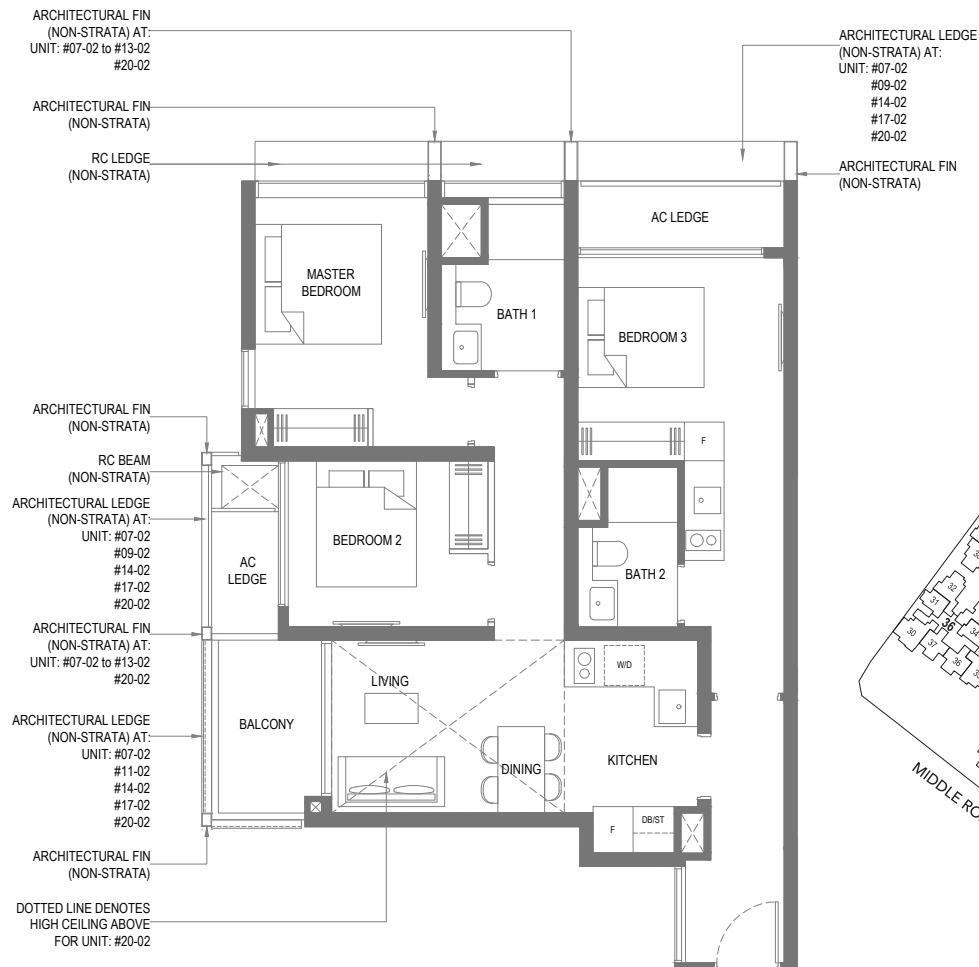
94 sq m / 1012 sq ft

Including strata void area of 10 sq m / 108 sq ft above living and dining

Approximate 5 m floor to ceiling height at living and dining

Block 30

#20-02



Area includes air-con (A/C) ledge, private enclosed space (PES), balcony and strata void area where applicable. Some Units are mirror images of the apartment plans shown in the brochure. Please refer to the key plan for orientation. The plans are subject to change as may be approved by relevant authorities. All floor plans are approximate measurements only and are subject to government re-survey. The PES and balcony shall not be enclosed unless with the approved balcony screen.