



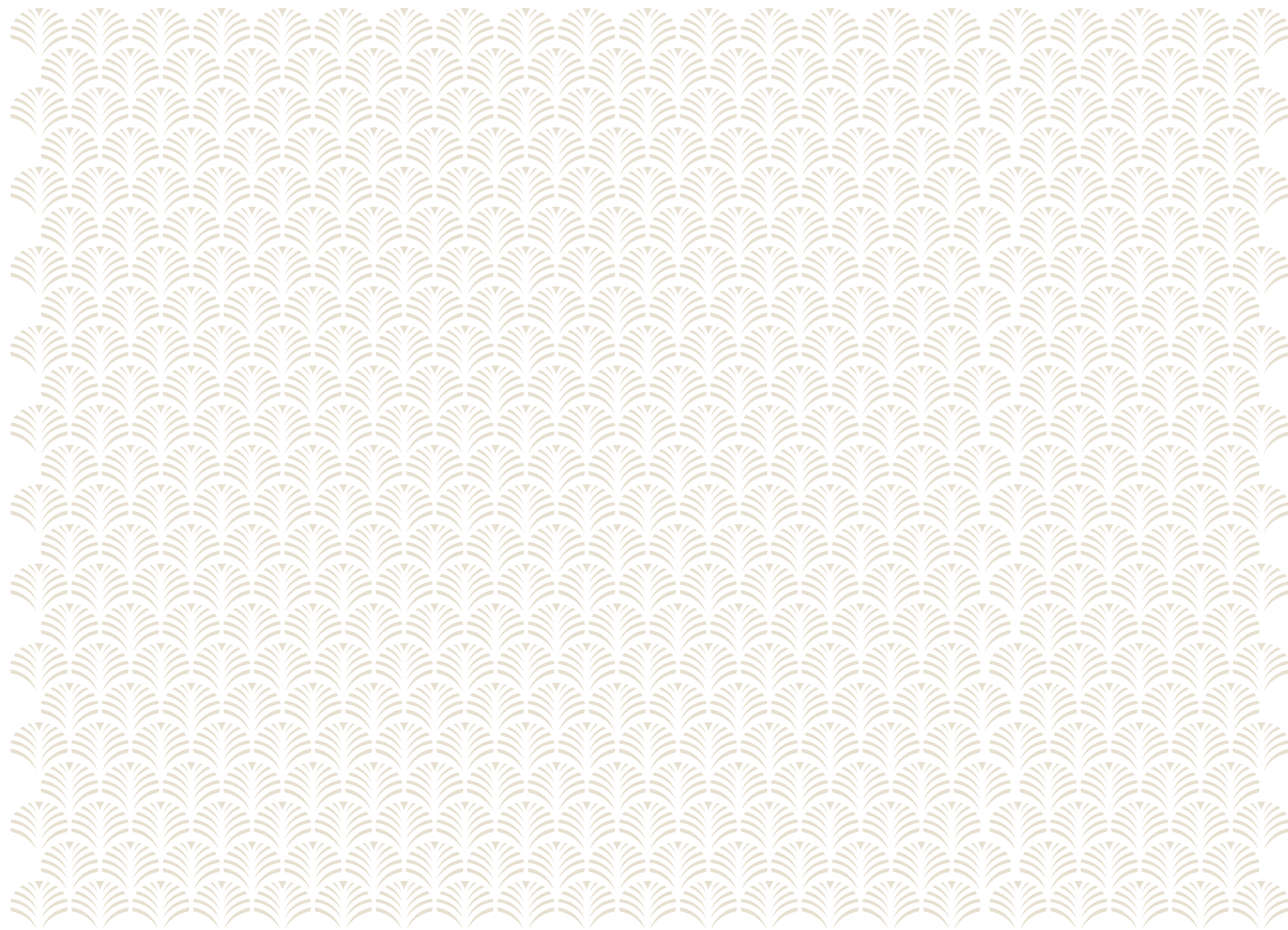
THE PALMS

BESPOKE RESORT LIVING

THE LANDMARK OF LUXURY

In a stunning location overlooking Mekong River,  
The Palms, has been passionately designed and  
shaped to blend effortlessly into the organic  
surroundings of lush greenery and glistening waters.  
Featuring a collection of exclusive cluster homes  
and superbly luxurious villas built amidst hundreds  
of palms trees, the essence of this distinctive  
development is one of understated luxury and of  
highest standards in luxurious resort living.  
Nothing beats the thought of going back  
to the finest abode that provides not  
only a staycation, but a vacation  
on a 24/7 getaway, in 365 days.

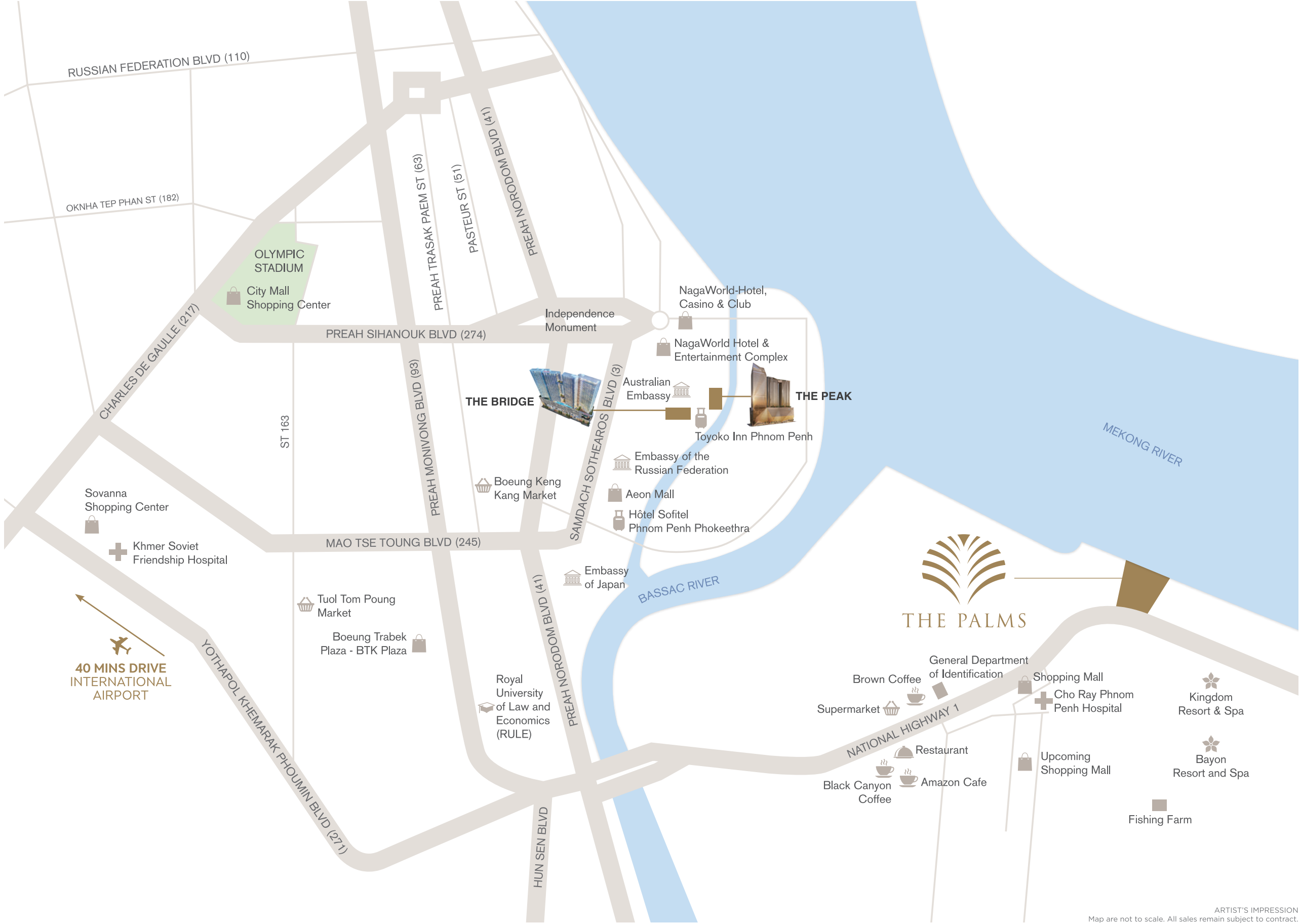




THE PALMS IS JUST A STONE'S THROW  
FROM THE CITY



ONLY 15 MINUTES DRIVE TO WORK, PLAY AND ENTERTAINMENT IN THE CENTRAL BUSINESS DISTRICT







AN OVERVIEW OF HIGH LIFE LIVING

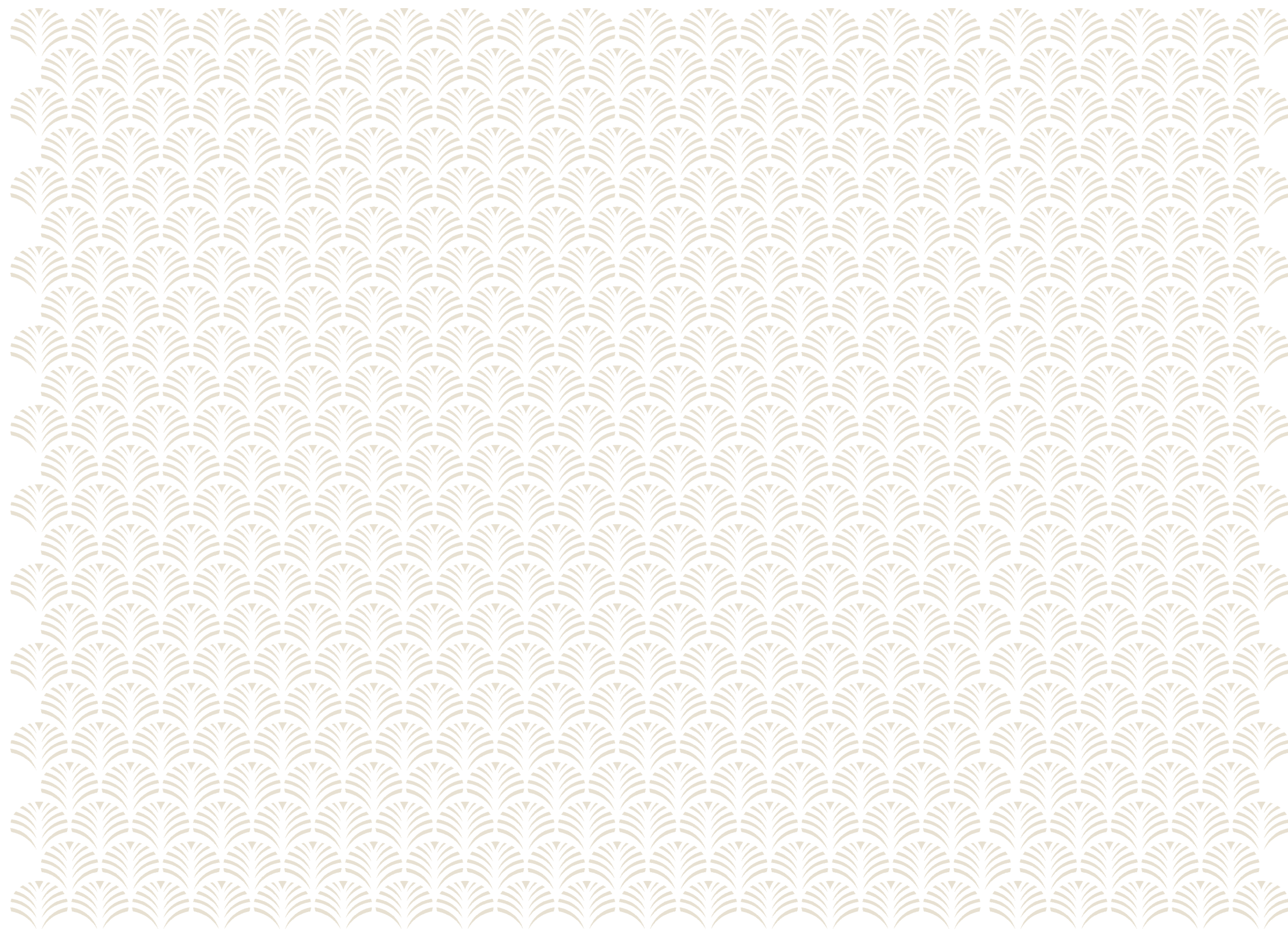


A GRAND WELCOME ON YOUR ARRIVAL  
AT THE 24/7 WELL PROTECTED, HIGHLY  
SECURED LUXURIOUS RESORT HOMES

Turn your dream home into reality. Arrive at the luxurious resort homes where you will be greeted with a grand entrance that speaks of your status and accomplishments. Feel absolutely safe and secure in the arms of high-tech security where you know everything will be well taken care of. Rest easy at night with your family in the protective fortress of your home sweet home. Live in peace of mind. Enjoy life. Only at The Palms.







BE CAPTIVATED BY WHAT LIES  
BEHIND THE GRAND ENTRANCE -  
THE MAJESTIC MEKONG RIVER,  
FIRST MAN-MADE BEACH AND  
MORE THAN 60 FACILITIES INCLUDING  
AN ELEGANT CLUBHOUSE TO  
ENTERTAIN YOU ALL DAY LONG,  
ONLY AT THE PALMS





Luxury. Privacy. Priceless views. These stunning villas have them all. At The Palms, the magnificent villas aligned themselves to form an outstanding picturesque view by the coastline. Here's indeed a place where many could only dream of but few will own. From the moment you step into the waterfront villas, you will be enchanted by the elegance. This is ultimate. This is pure luxury.



CAMBODIA'S ONE AND ONLY, MAN-MADE  
PALM BEACH AT YOUR DOORSTEP





# YOUR LUXURIOUS RESORT HOME OVERLOOKING BOTH THE RIVER AND YOUR PRIVATE SHORE

At The Palms, we created the one and only, first man-made luxurious beach homes for the discerning few. Every unit has the luxury to overlook both the beautiful beach and the majestic Mekong River. This bespoke initiative is exclusively designed and built for those who truly understand there is more to life than just being contented. At this exclusive shore, we termed it - your private beach.



ARTIST'S IMPRESSION





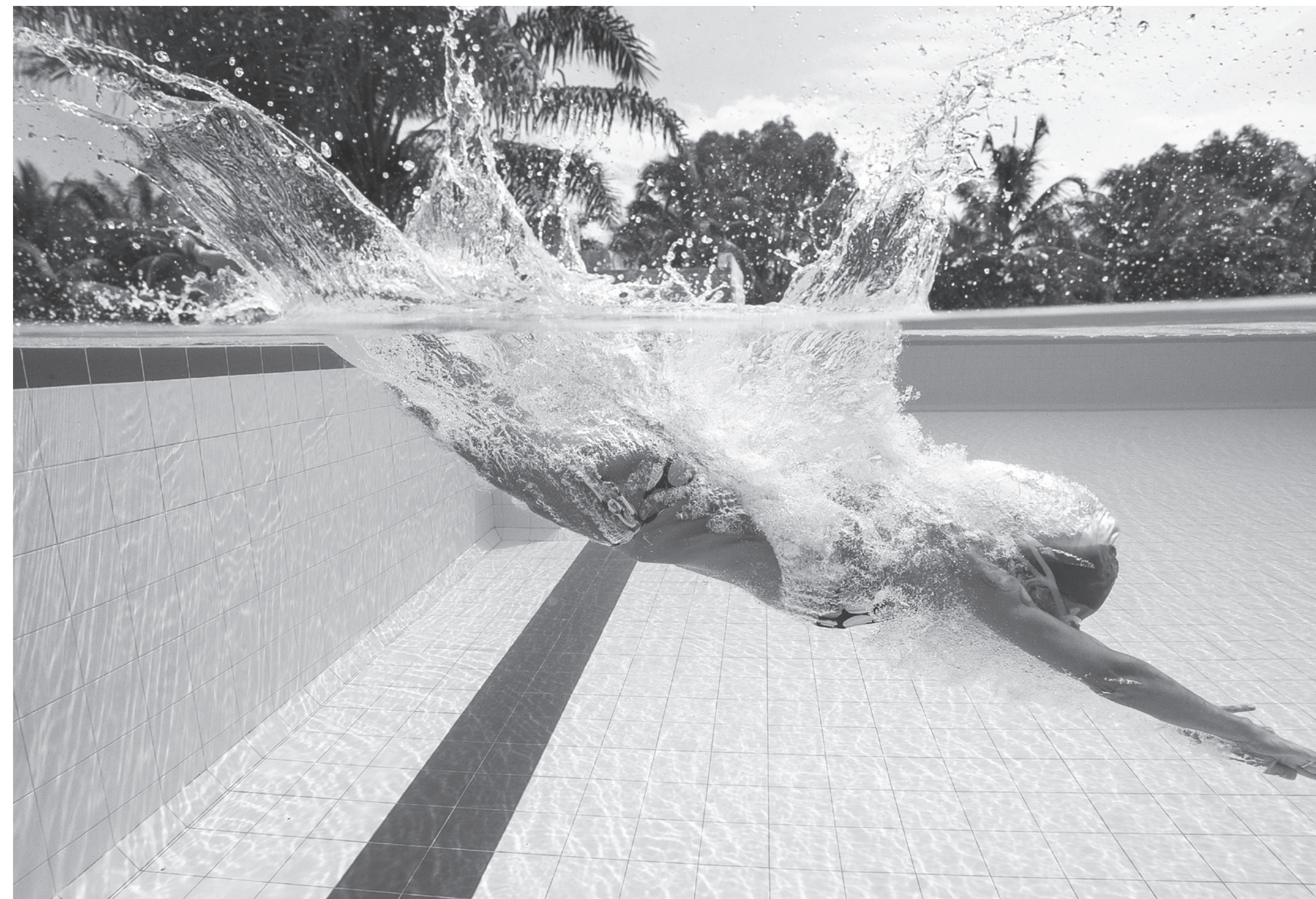
## YOUR VACATION ALL YEAR ROUND

The minute you step foot on The Palms, you know you are at Cambodia's most gorgeous resort homes. Picture yourself in paradise where the sun always greets you on the bright side. And all these are happening at your doorstep.





TAKE A DIP INTO A  
MORE THAN 50M  
LAGOON POOL TO EXPLORE  
A WHOLE NEW WORLD

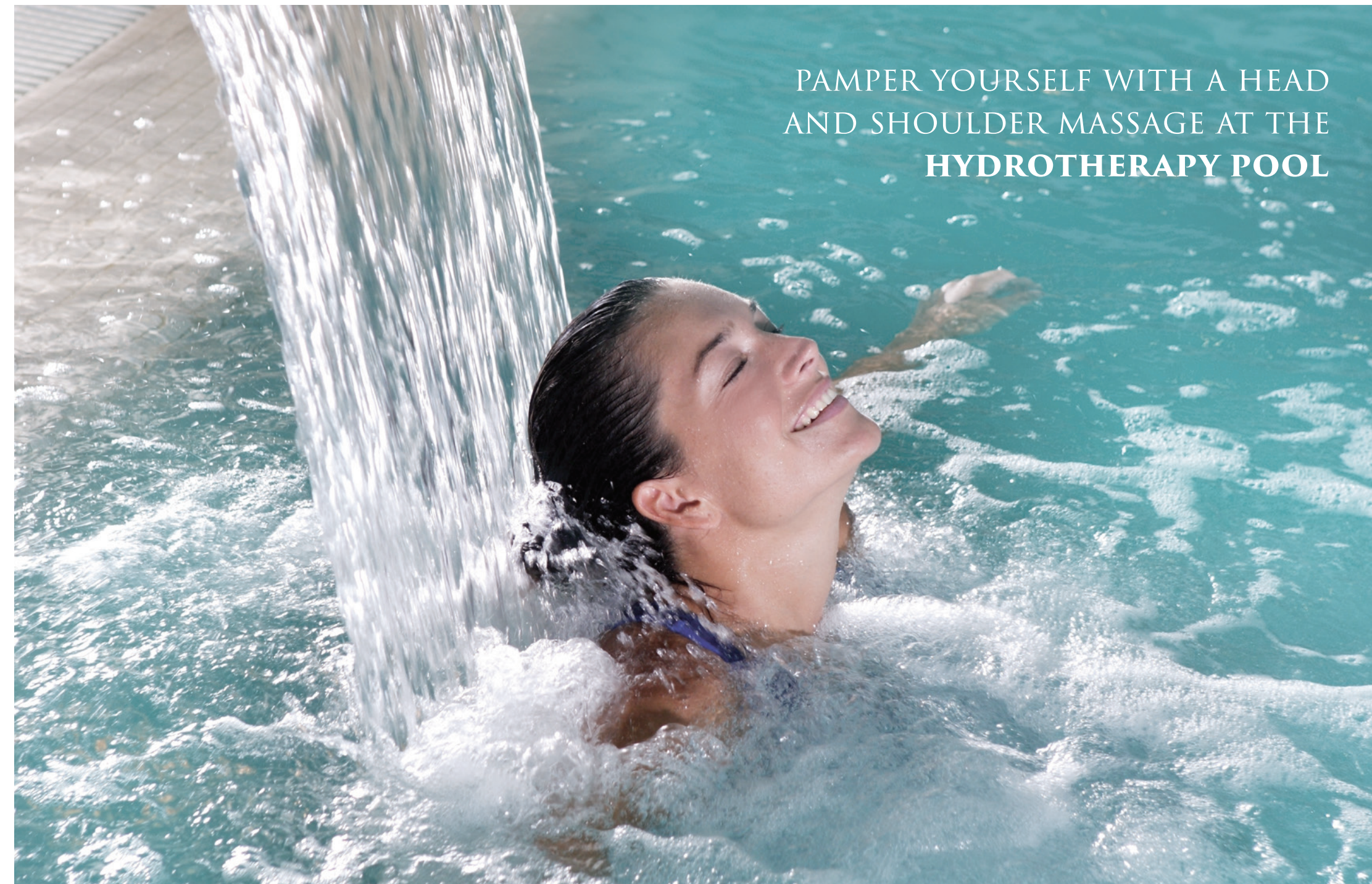






## RENEW YOUR BODY, MIND AND SOUL AT YOUR PRIVATE ISLE

When you want to get away and retreat for a little while, you realise that barefoot luxury is actually within your home compound. Open to a world of wonderful retreats where you can relax at your private spaces every single day. From dipping in the jacuzzi to the hydrotherapy pool, you can simply drain your worries away.

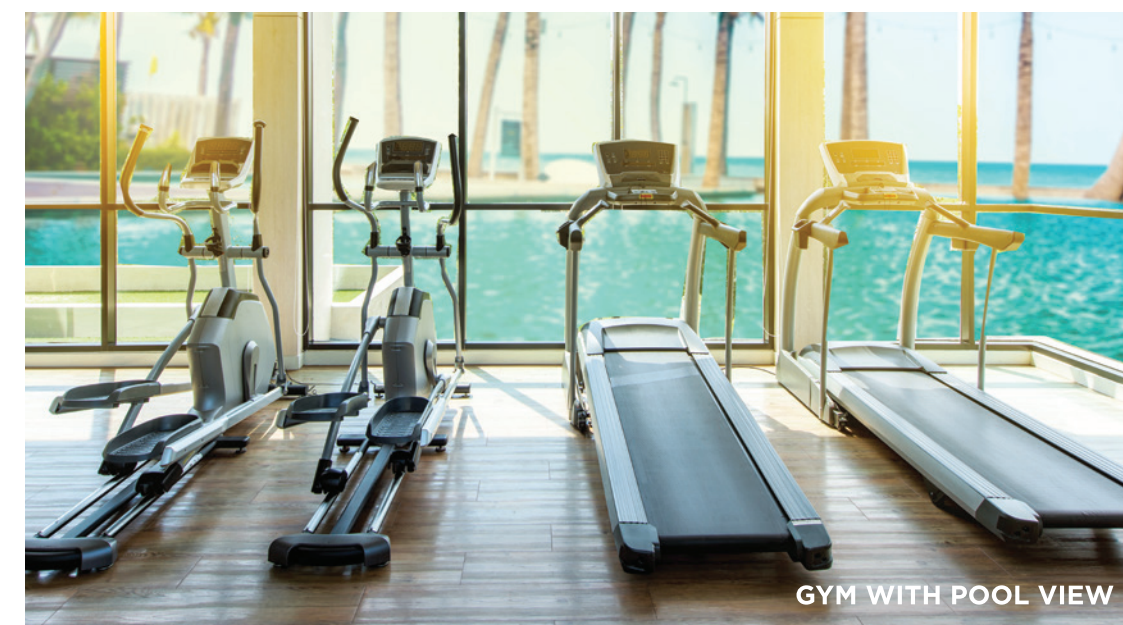






GRACE THE  
GOLDEN SUNSET  
BY THE  
TRANQUIL POOL

ENJOY PICTURESQUE VIEW AT THE GYM OR  
SIP YOUR FAVOURITE COCKTAIL BY THE POOL BAR



GYM WITH POOL VIEW



CABANAS  
ARTIST'S IMPRESSION



EXERCISE LAWN



PLAYGROUND



POOL BAR





GOURMET HALL



CONCIERGE DESK



WELLNESS SPA



GOURMET KITCHEN



GAMES AREA

## INDULGE IN A FULL SUITE OF ENTERTAINMENT AT THE CLUBHOUSE

At the heart of your home premise, you can simply throw as many parties, gather as many friends for as many chill-out. You can also enjoy a sip at the bar or a quiet time at the lounge. The clubhouse is a haven at your doorstep to provide all the entertainment you always desire at your convenience. While you chill-out, your children can stay happy and settle at the kids corner.



# WELCOME TO YOUR PRIVATE SANCTUARY

Garden is a place where you find peace of mind, feel relax and refreshed. Take a morning walk in one of the many finest gardens at The Palms. Each garden is specially ploughed to suit your different moods. Lose yourself in the beauty of nature, hear birds chirp and squirrels bark. All at your private gardens.







FERN GARDEN



LILY GARDEN



FLORAL ARBOR



EVERGREEN



GARDEN

BE ENTICED BY THE SPICES AT OUR SELECTIONS OF LUSH GARDENS. INVITE YOUR PERSONAL CHEF TO WHIP UP A SUMPTUOUS MEAL FOR YOU AND YOUR FAMILY



SPICE GARDEN



BBQ COOKING COUNTER



GINGER GARDEN



## THE BOARDWALK BY THE MAJESTIC MEKONG RIVER CONNECTS EVERYONE

At the boardwalk, you will enjoy different picture-perfect views of the majestic Mekong River from morning to night. Take in the fresh morning breeze and grace the sunrise to start your day. In the evening, the sunset reflects on the waters to reveal a golden pool as beautiful as the golden silk gown worn by an emperor. Along the boardwalk, that's where you build a community with people who are in-sync with your thoughts, lifestyle and language. Be united with them at this place where you call home - at The Palms.





1ST STOREY PLAN

GRAND ARRIVAL

- 01 Palm Avenue
- 02 Guard House
- 03 Entrance Gateway
- 04 Water Feature
- 05 Arrival Court
- 06 Fully Sheltered Carpark (Ground Floor)

BEACH LIFE

- 07 Man-made beach
- 08 Beach Pool
- 09 Bumper Boat
- 10 Sun Deck
- 11 Water Play
- 12 Kid's Playground
- 13 BBQ
- 14 Dining Pavilion

GRAND LAGOON

- 15 Lagoon Pool
- 16 Gym
- 17 Pool-side Cabana
- 18 Jacuzzi Alcove
- 19 Aqua Lounge
- 20 Pool Bar
- 21 Lagoon Pool Deck

WELLNESS RETREAT

- 22 Hydrotherapy Pool
- 23 Head and Shoulder Massage Jets
- 24 Bubble Spa
- 25 Jacuzzi
- 26 Spa deck
- 27 Lily Pond
- 28 Foot Reflexology
- 29 Lily Garden
- 30 Yoga Pavilion

ACTIVE SWIM

- 31 Lap Pool
- 32 Pool Deck
- 33 Outdoor Fitness

LUSH GARDENS

- 34 Bamboo Garden
- 35 Palm Garden
- 36 Floral Arbor
- 37 Ginger Garden
- 38 Spice Garden
- 39 Fern Garden
- 40 Green Garden

MEKONG VIEW

- 41 Grand Water Cascade
- 42 Mekong Viewing Gallery
- 43 Mekong Boardwalk
- 44 Outdoor Seating
- 45 Floating Jetty



ARTIST'S IMPRESSION  
All plans, designs, layouts and measurements are not to scale, and are indicative dimension only.  
Computer images and photos are indicative only. All sales remain subject to contract.

GROUND FLOOR PLAN

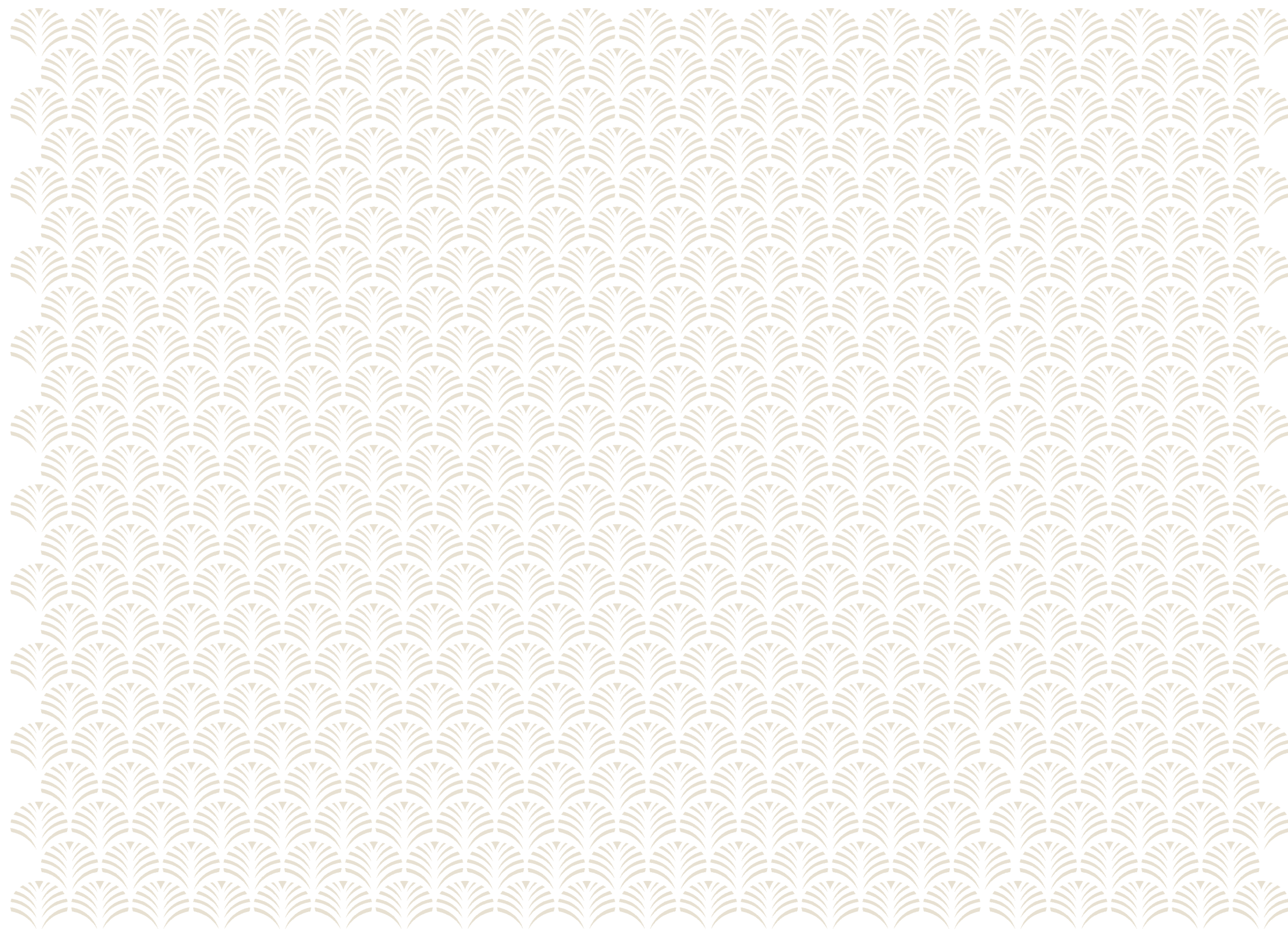
PALMS CLUBHOUSE

- 46 Clubhouse
- 47 Visitor Drop-off
- 48 Welcome Lobby
- 49 Reception
- 50 Bar Counter
- 51 Club Lounge
- 52 Concierge Desk
- 53 Gourmet Hall
- 54 Gourmet Kitchen
- 55 Pre-Function Area
- 56 Function Hall 1
- 57 Function Hall 2
- 58 Screening Room
- 59 Kid's Corner
- 60 Games Area
- 61 Library
- 62 Wellness Spa



ARTIST'S IMPRESSION  
All plans, designs, layouts and measurements are not to scale, and are indicative dimension only.  
Computer images and photos are indicative only. All sales remain subject to contract.





EXCLUSIVE CLUSTER TERRACES  
AND BESPOKE WATERFRONT VILLAS





# CLUSTER TERRACES

# HOME IS WHERE YOUR HEART BELONGS

At The Palms, you can truly call your own. Rise and shine, get up close and personal with the easy flow of indoor-outdoor spaces that gives you the absolute freedom to live the way you desire. Meticulously putting every detail together to match your unrivalled lifestyle, we simply put you above all. Relax at you patio over a cuppa while basking in the morning sun or sip wine under a starry night with your loved ones. Let your living area be your breathing space while the great outdoor provides breathtaking views. Here is - HOME.



STEP OUT TO IMMEDIATELY  
ENJOY THE CONVENIENCE OF  
A PRIVILEGED LIFESTYLE

ARTIST'S IMPRESSION







# VILLAS

## DREAM TO MANY, HOMES TO FEW

Be swept away by the beauty of these glorious villas. Each villa is fronted by the beautiful Mekong River, comes with a private pool, 3 levels of unsurpassed breathing spaces and an expansive living room that opens to the garden making way for a romantic evening under the stars. The floor plan simply invites you to entertain your families and friends at all occasions, making room for every celebration as the star of the show - The Palms.





Take a dip in the evening to enjoy the moonlight reflection that turns the river into a silver sea. Or unwind in luxurious splendor at your lounge chairs as you sip wine with your loved ones to rejuvenate your body and mind.

Draw those curtains and let the river breeze hum a lullaby while the stars shimmer your room. There is nothing more gratifying than curling up in your bed at the end of the day in an elegantly designed master room. Every day is simply homecoming. Every night is made up of sweet dreams.





OXLEY HOLDINGS LIMITED

Oxley Holdings Limited (“Oxley” or “the Group”) is an international property developer headquartered and listed in Singapore. Oxley specialises in the development of quality residential, commercial, and industrial projects. Since its incorporation in March 2010, it has launched 34 projects and completed 28 projects.

Through forging strong partnerships with reputable developers and business partners, the Group has a business presence across 11 geographical markets today, including Singapore, the United Kingdom (“UK”), Ireland, Cambodia, Malaysia, Indonesia, China, Japan, Myanmar, Australia and Cyprus. Oxley’s developments are typically located in choice areas that are easily accessible. Most of its projects incorporate retail elements, lifestyle features and facilities.

The Group’s iconic commercial project in Singapore, Oxley Tower was completed in 2016. Key overseas projects under development include mixed-use development, Oxley Towers Kuala Lumpur City Centre in Malaysia, a waterfront township development of 363,000 square meters (“sqm”) in London, UK, and two mixed-use developments in Phnom Penh, Cambodia. In Dublin, Ireland, the Group is developing a site of 2.35 hectares next to the proposed new headquarters of the Central Bank of Ireland, combining 65,000 sqm of Grade A office and retail space with 273 luxury residential apartments.

The Group has also diversified into investment on property as part of our fixed assets. Projects include two hotels, Novotel Singapore on Stevens and Mercure Singapore on Stevens. Both are under development and are due to open for business in 2017.



UNITED KINGDOM  
ROYAL WHARF



IRELAND  
DUBLIN LANDINGS



MALAYSIA  
OXLEY TOWERS  
KUALA LUMPUR CITY CENTRE



CAMBODIA  
THE BRIDGE



CAMBODIA  
THE PEAK



SINGAPORE  
OXLEY TOWER



INDONESIA  
OXLEY CONVENTION CITY



MYANMAR  
MIN RESIDENCES



SINGAPORE  
NOVOTEL ON STEVENS,  
MERCURE ON STEVENS



SINGAPORE  
THE RISE @ OXLEY



SINGAPORE  
THE FLOW

WORLDBRIDGELAND (CAMBODIA) CO., LTD

Worldbridgeland (Cambodia) Co., Ltd is a well-established real estate Company under the Worldbridge Group. The Company specialises in a wide range of property services such as sale and rental of all types of property, and professional property valuation. Since its establishment in May 2011, the company has grown steadily and enjoyed good success in tandem with the rising potential of the Cambodian property market.

With high confidence in the prospects of Cambodia, the Company readily ventured into property development with a vision to transform the local property market to greater heights by introducing world-class luxury living.

JOINTLY DEVELOPED BY



**DISCLAIMER** While reasonable care has been taken in the preparation of this brochure, the developer cannot be held responsible for any inaccuracies or omissions. The statements, information and depictions shall not be regarded or relied upon as statements or representations of facts, and are subject to such changes as may be required by the developer or the relevant authorities, and cannot form part of an offer or contract. Visual representations, digital images, models, showflat, illustrations, photographs, drawings, displays and art renderings are artist’s impressions only (which serve only to give an approximate idea of the project), and cannot be regarded as representation of facts. All plans and layouts are not to scale and are subject to change/amendments as may be directed or approved by the relevant authorities or required by the architect. The floor areas indicated in the brochure are approximate measurements only and are subject to final survey. The information included in this brochure is accurate as at the time of printing and there may be changes subsequently as may be required by the architects and relevant authorities. For the avoidance of any doubt, the information herein shall not form part of the Option of Sales and Purchase Agreement governing the terms and conditions of the sale and purchase of the unit. All perspectives above are only artist’s impression



